



National Blood Lead Proficiency Testing Program July 2009 Testing Event

This nationwide proficiency testing program is supported by Project H 46 MC00123 from the Maternal and Child Health Bureau (Title V, Social Security Act), Health Resources and Services Administration, U.S. Department of Health and Human Services, and administered at the Wisconsin State Laboratory of Hygiene.

HEALTH RESOURCES AND SERVICES ADMINISTRATION

Elizabeth M. Duke, Ph.D., Administrator

Peter C. van Dyck, M.D., M.P.H., Associate Administrator, Bureau of Maternal and Child Health

David Heppel, M.D., Chief, Division of Child, Adolescent & Family Health



August 06, 2009

Dear Participant:

Your individual performance report and statistical summary for the bimonthly blood lead proficiency testing event are attached.

Sample 09PB14 contained a lead concentration falling below the limit of quantification for many laboratories. In this event approximately 80% of the LeadCare II participants reported a result of <3 ug /dL, making that the most appropriate target value. Because of system limitations, for evaluation purposes a target value of 2 ug/dL has been applied. This value, along with an associated acceptable range of 0-6 ug/dL appears on the individual evaluation report for LeadCare II participants. The statistical summary more correctly lists the target value as <3 ug/dL for this reporting group.

As always, please contact us with any questions you might have.

Sincerely,

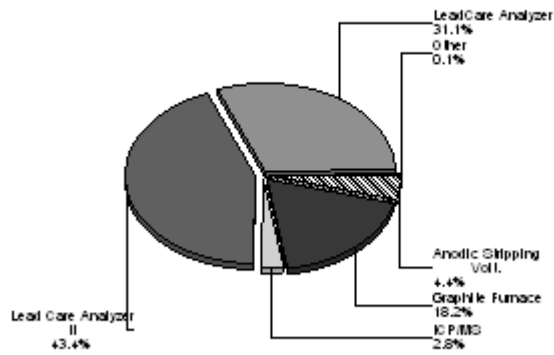
Noel Stanton
Pb/EPPT Program Supervisor

Pb/EPPT Program, Toxicology Section
State Laboratory of Hygiene
2601 Agriculture Drive
Madison WI 53718

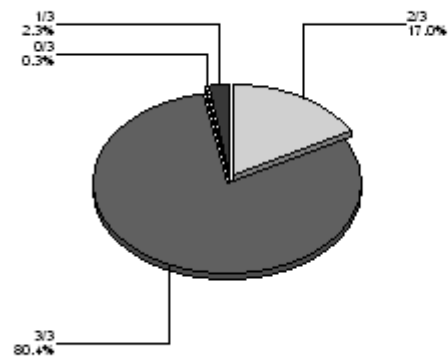
(608) 224-6252
toxpt@mail.slh.wisc.edu



Analytical Methods



Event Performance



Target and Acceptable Range Information, ug/dL

Group	09PB14	09PB15	09PB16
Refereed Methods			
Target Value	1	39	12
Accepted Result	0-5	35-43	8-16
LeadCare®			
Target Value	1	46	13
Accepted Result	0-5	41-51	9-17
LeadCare® II			
Target Value	<3	45	14
Accepted Result	0-6	40-50	10-18

Method Statistics

Refereed Group	09PB14	09PB15	09PB16
Referee Laboratories (N=14)			
Mean	1.2	38.8	11.6
Standard Deviation	0.8	1.3	0.5
Number of Results *	14	14	14
All Refereed Methods (N=170)			
Mean*	1.6	38.6	11.5
Standard Deviation*	1.2	2.4	1.1
Participant Results (%Pass)	99	90	98
Anodic Stripping Voltammetry (ASV) (N=30)			
Mean*	2.3	38.4	11.3
Standard Deviation*	1.3	2.4	1.6
Participant Results (%Pass)	100	93	97
Graphite Furnace Atomic Absorption (N=121)			
Mean*	1.3	38.6	11.6
Standard Deviation*	0.9	2.4	1.1
Participant Results (%Pass)	99	88	98
ICP/MS (N=19)			
Mean*	1.3	38.8	11.4
Standard Deviation*	0.7	2.1	1.0
Participant Results (%Pass)	100	95	100

* Statistical outliers and alpha-numeric results (e.g. <X) have been excluded from the calculations

† Lack of statistical group consensus; all results deemed acceptable.

LeadCare® Group	09PB14	09PB15	09PB16
LeadCare® (N=211)			
Mean*	1.2	46.5	13.4
Standard Deviation*	1.2	4.2	1.4
Participant Results (%Pass)	98	79	97
LeadCare® II (N=290)			
Mean*	<3	45.3	14.2
Standard Deviation*	N/A	3.8	1.9
Participant Results (%Pass)	99	79	94

* Statistical outliers and alpha-numeric results (e.g. <X) have been excluded from the calculations

† Lack of statistical group consensus; all results deemed acceptable.

