



**WISCONSIN STATE  
LABORATORY OF HYGIENE**

Environmental Health Division  
2601 Agriculture Drive  
P.O. Box 7996  
Madison, WI 53707-7996  
Phone: (608) 224-6252 · (800) 442-4618  
FAX: (608) 224-6213

---

**University of Wisconsin**

## **National Filter Paper Blood Lead PT Program August 2009 Testing Event**





September 04, 2009

Dear Participant:

Your individual performance report and statistical summary for the monthly Filter Paper Blood lead proficiency testing event are attached.

As always, please contact us with any questions you might have.

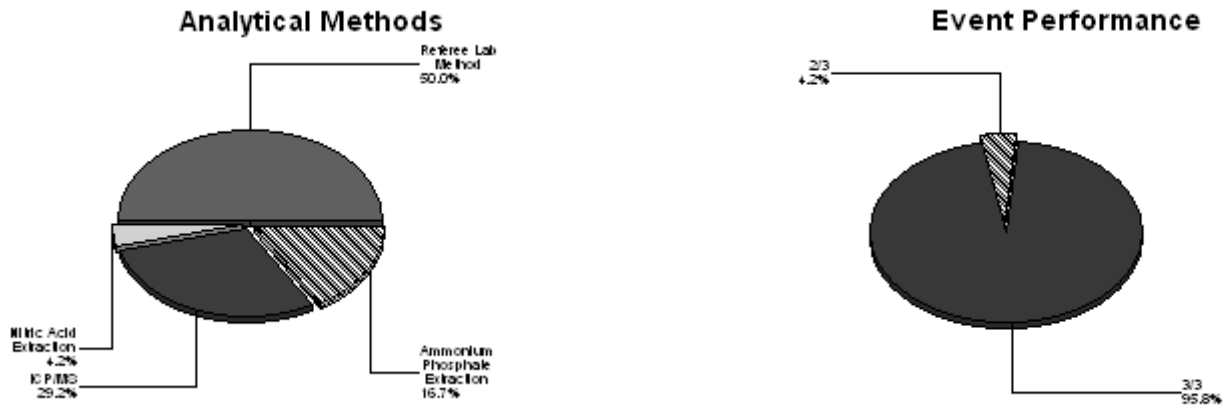
Sincerely,

Noel Stanton  
Pb/EPPT Program Supervisor

Pb/EPPT Program, Toxicology Section  
State Laboratory of Hygiene  
2601 Agriculture Drive  
Madison WI 53718

(608) 224-6252  
toxpt@mail.slh.wisc.edu





### Target and Acceptable Range Information, ug/dL

Group	09FP26	09FP27	09FP28
<b>Refereed Methods</b>			
Target Value	26	20	10
Accepted Result	22-30	16-24	6-14

### Method Statistics

Refereed Group	09FP26	09FP27	09FP28
<b>Referee Laboratories (N=12)</b>			
Mean	26.1	20.5	9.9
Standard Deviation	1.2	1.0	0.7
Number of Results *	12	12	12
<b>All Participant Laboratories (N=12)</b>			
Mean*	26.5	21.1	9.6
Standard Deviation*	1.9	1.7	1.4
Participant Results (%Pass)	92	100	100
<b>Ammonium Phosphate Extraction/GFAA (N=4)</b>			
Mean*	26.5	21.0	8.8
Standard Deviation*	2.5	2.4	2.1
Participant Results (%Pass)	100	100	100
<b>Nitric Acid Extraction/GFAA (N=1)</b>			
Mean*	25.0	21.0	9.0
Standard Deviation*	0.0	0.0	0.0
Participant Results (%Pass)	100	100	100
<b>ICP/MS (N=7)</b>			
Mean*	28.1	21.1	10.1
Standard Deviation*	3.8	1.6	0.9
Participant Results (%Pass)	86	100	100

\* Statistical outliers and alpha-numeric results (e.g. <X) have been excluded from the calculations

† Lack of statistical group consensus; all results deemed acceptable.

