



WISCONSIN DEPARTMENT OF HEALTH SERVICES
Division of Public Health
Bureau of Communicable Diseases and Emergency Response



Respiratory virus surveillance report for the week ending May 5, 2012 week 12-18

AT-A-GLANCE

- Respiratory viruses identified this week :
Rhino/enterovirus and influenza (A/H3 and B) are predominant.

- Influenza-like illness (ILI) activity for this week

Wisconsin	Low
Wisconsin (CDC level)	Minimal
Western Region	Low
Northern Region	Low
Northeastern Region	Low
Southeastern Region	Low
Southern Region	Low

- ILI activity in Region V of the U.S. (WI, MN, IL, MI, OH, IN) is below baseline levels
- ILI activity in the U.S. is below baseline levels
- The Predictive Value Positive (PVP) for rapid influenza tests is: declining
(PVP is the probability of disease in a patient with a positive test result)
- The Predictive Value Negative (PVN) for rapid influenza tests is: increasing
(PVN is the probability of not having disease when the test result is negative)
- Influenza-associated pediatric deaths (October 8, 2011-present)

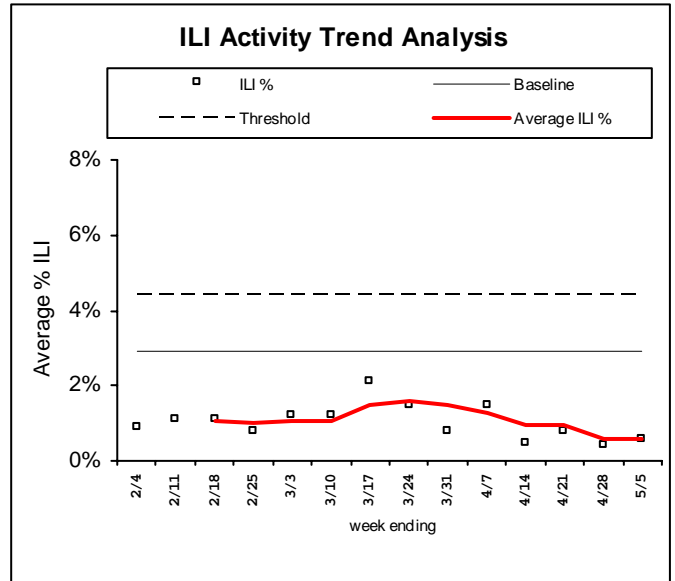
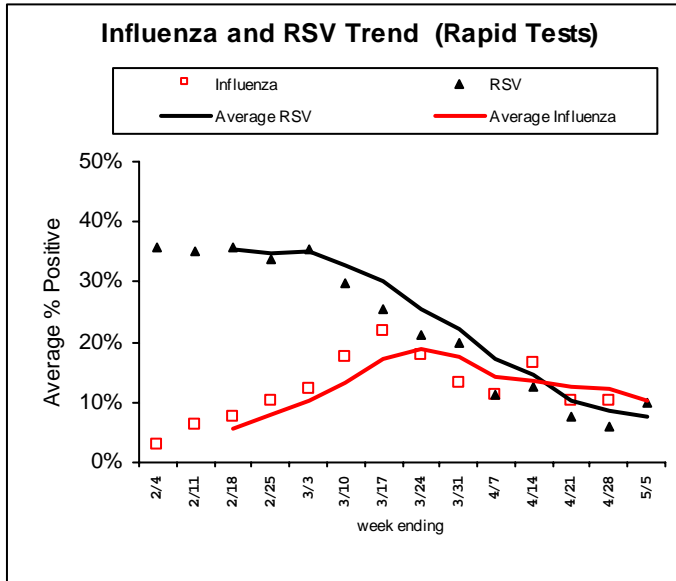
	Week 12-18	Total to Date
Wisconsin	0	1
United States	2	20

The influenza and RSV season continue in Wisconsin. March 31, 2012 ***is not*** recognized as the official end of either season. The determination of when either season ends is based on positive laboratory results. As long as positive results are seen we do not consider the season to have ended.

WISCONSIN and REGIONAL SUMMARIES
(Trend analysis based on 3-week moving averages)

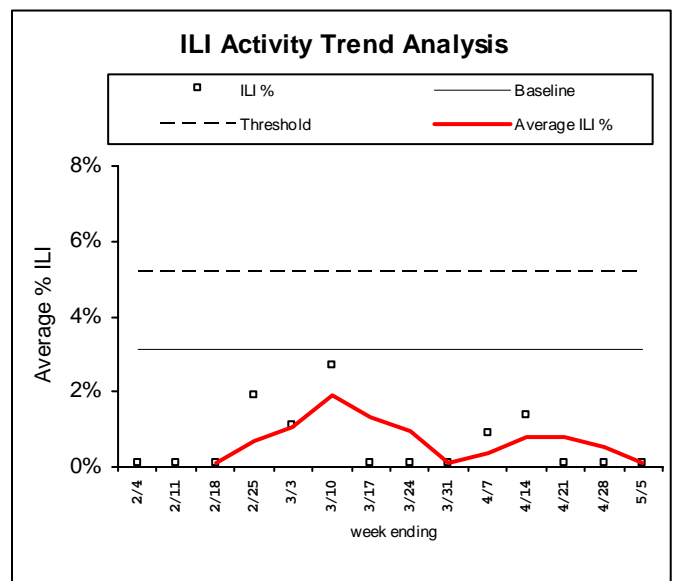
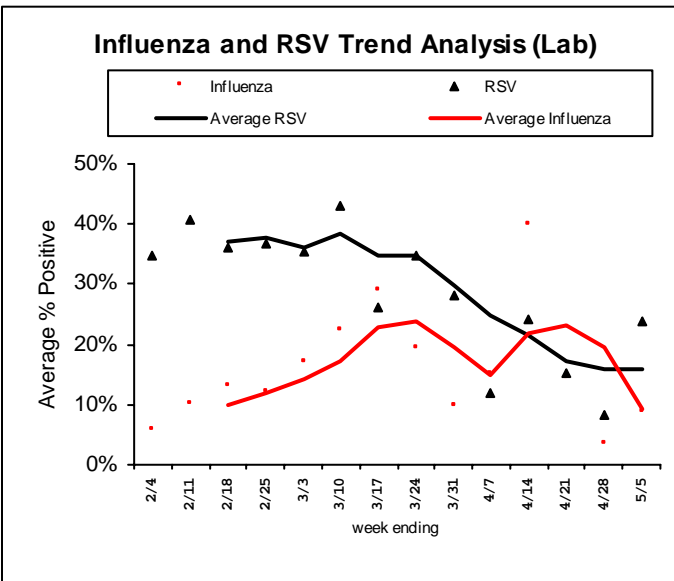
Wisconsin (ILI activity is Low)

INFLUENZA RAPID ANTIGEN TESTS					RSV RAPID ANTIGEN TESTS			INFLUENZA-LIKE ILLNESS		
Tested	Positive			% Positive	Tested	Positive	% Positive	ILI %	Baseline	Threshold
	Flu A	Flu B	Total							
317	14	22	36	11.4%	110	11	10.0%	0.6%	2.9%	4.4%



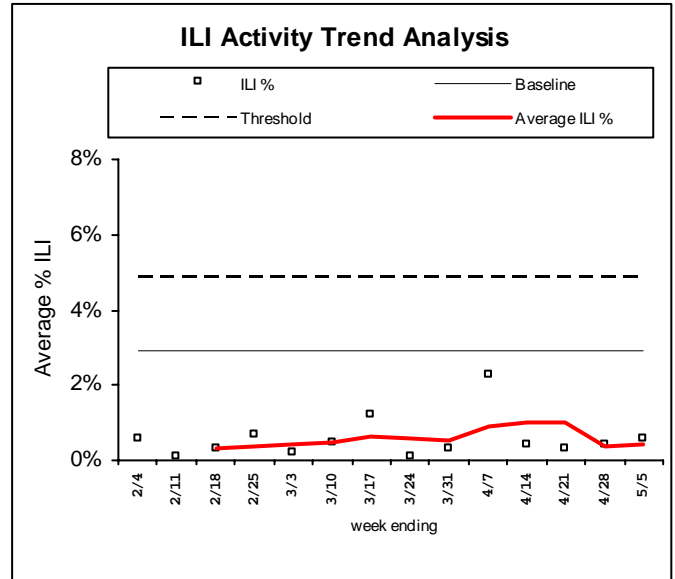
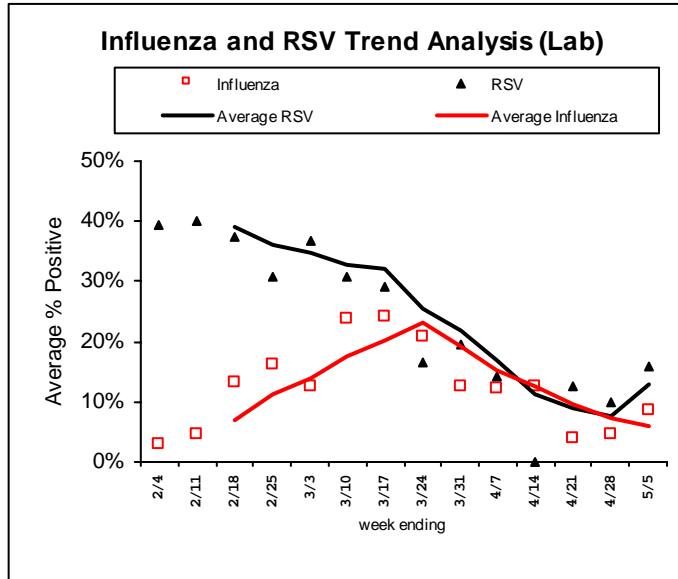
Northern Region (ILI activity is Low)

INFLUENZA RAPID ANTIGEN TESTS					RSV RAPID ANTIGEN TESTS			INFLUENZA-LIKE ILLNESS		
Tested	Positive			% Positive	Tested	Positive	% Positive	ILI %	Baseline	Threshold
	Flu A	Flu B	Total							
44	1	3	4	9.1%	21	5	23.8%	0.1%	3.1%	5.2%



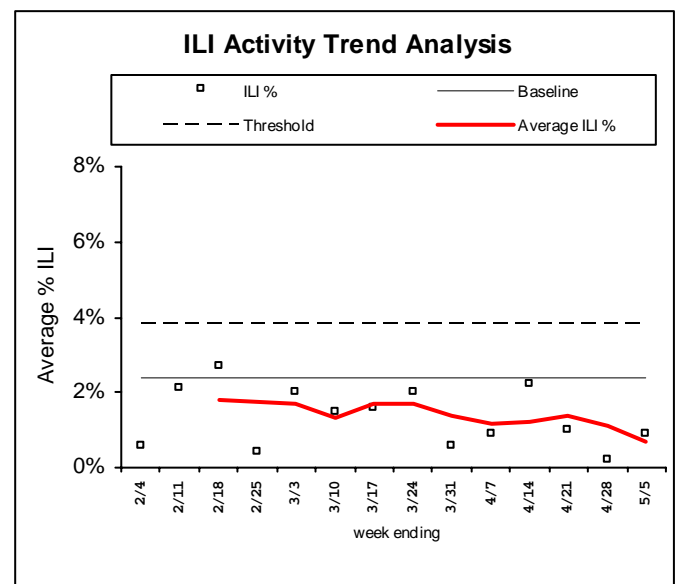
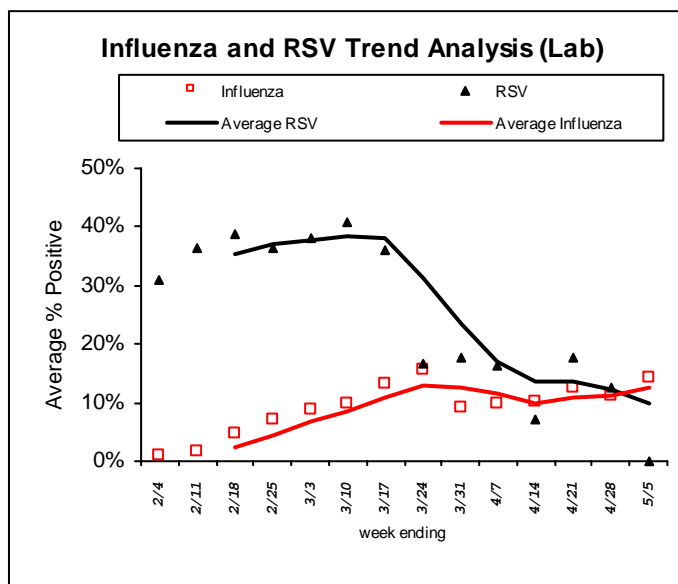
Western Region (ILI activity is Low)

INFLUENZA RAPID ANTIGEN TESTS				RSV RAPID ANTIGEN TESTS			INFLUENZA-LIKE ILLNESS			
Tested	Positive			% Positive	Tested	Positive	% Positive	ILI %	Baseline	Threshold
	Flu A	Flu B	Total							
46	2	2	4	8.7%	19	3	15.8%	0.6%	2.9%	4.9%



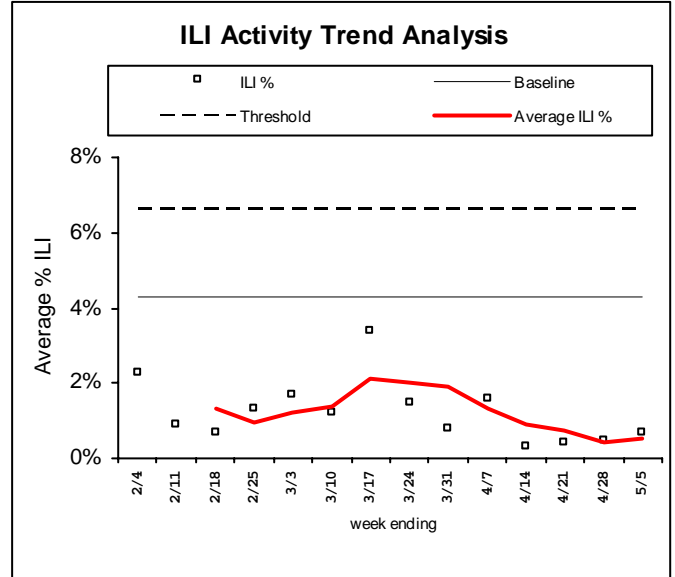
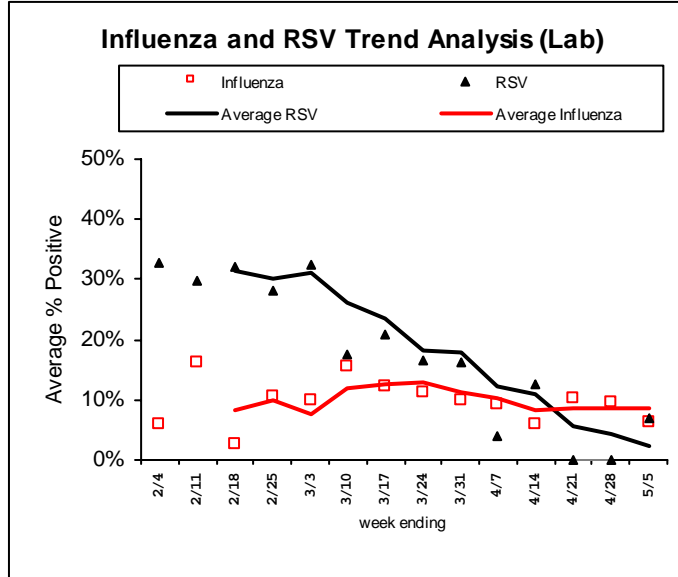
Northeastern Region (ILI activity is Low)

INFLUENZA RAPID ANTIGEN TESTS				RSV RAPID ANTIGEN TESTS			INFLUENZA-LIKE ILLNESS			
Tested	Positive			% Positive	Tested	Positive	% Positive	ILI %	Baseline	Threshold
	Flu A	Flu B	Total							
90	7	6	13	14.4%	16	0	0%	0.9%	2.4%	3.8%



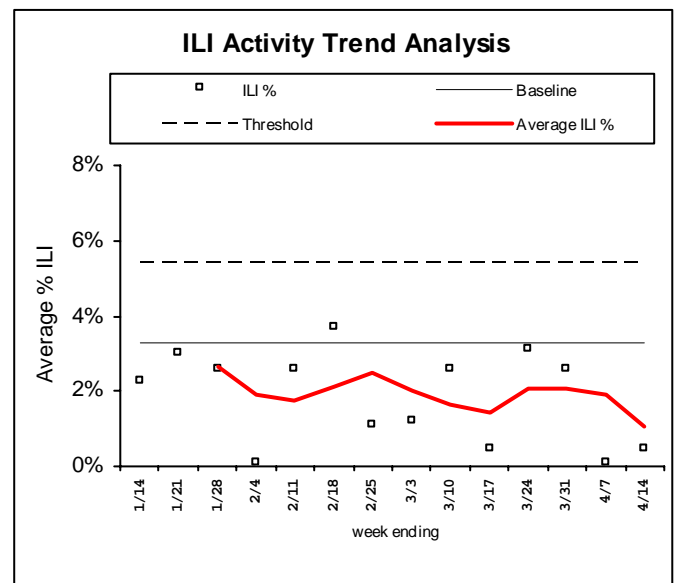
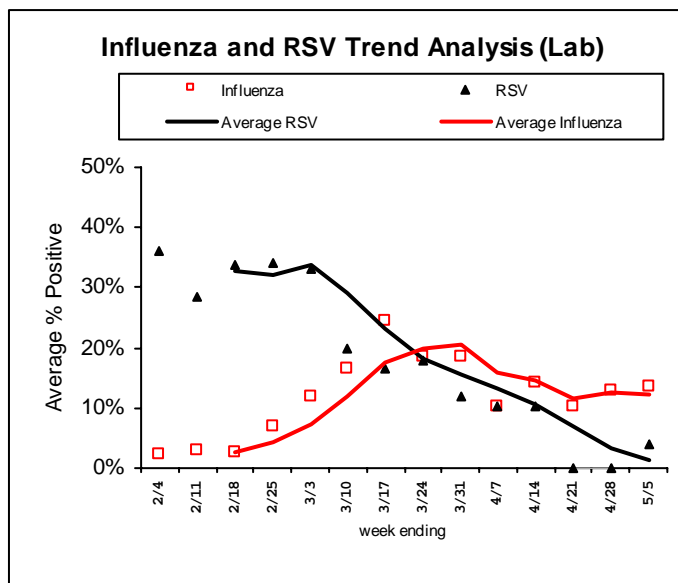
Southern Region (ILI activity is Low)

INFLUENZA RAPID ANTIGEN TESTS				RSV RAPID ANTIGEN TESTS			INFLUENZA-LIKE ILLNESS			
Tested	Positive			% Positive	Tested	Positive	% Positive	ILI %	Baseline	Threshold
	Flu A	Flu B	Total							
					29	2	6.9%	0.7%	4.3%	6.6%



Southeastern Region (ILI activity is Low)

INFLUENZA RAPID ANTIGEN TESTS				RSV RAPID ANTIGEN TESTS			INFLUENZA-LIKE ILLNESS			
Tested	Positive			% Positive	Tested	Positive	% Positive	ILI %	Baseline	Threshold
	Flu A	Flu B	Total							
89	4	8	12	13.5%	25	1	4.0%	0.1%	3.3%	5.5%



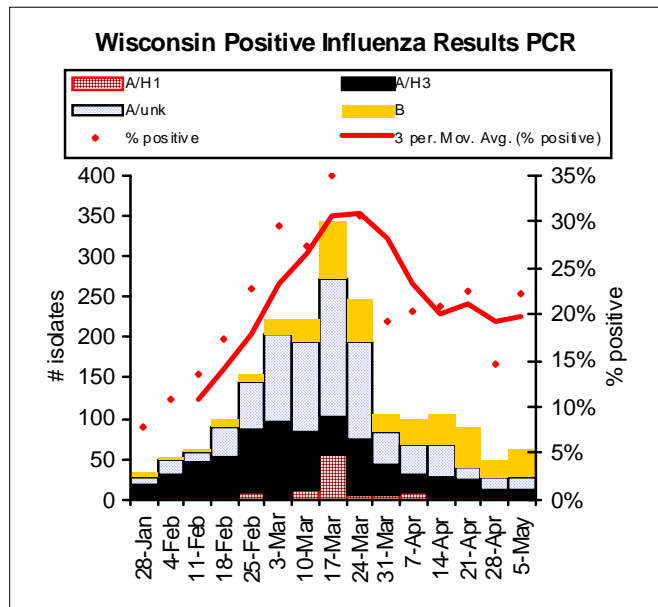
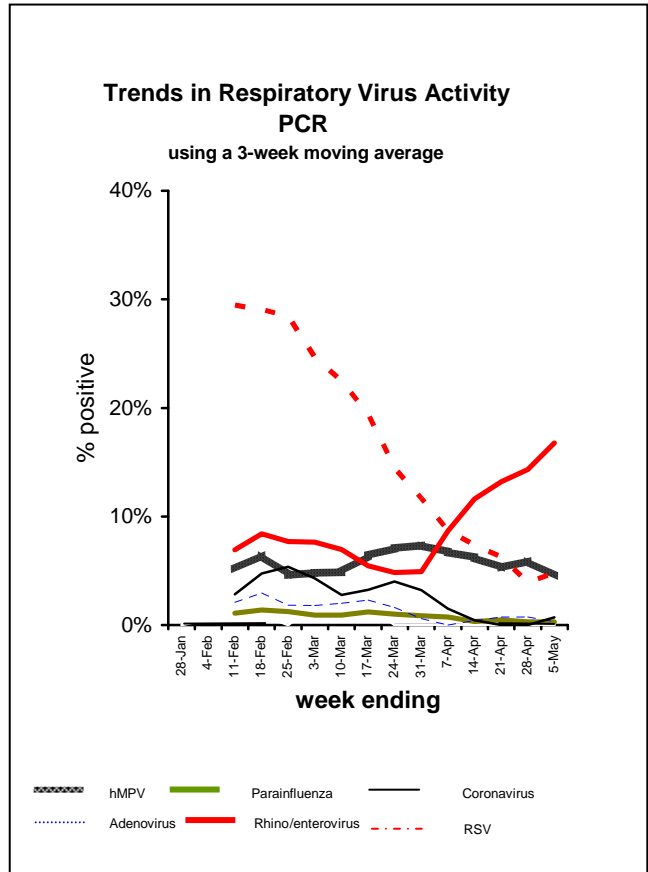
LABORATORY SURVEILLANCE FOR RESPIRATORY VIRUSES (PCR)

Respiratory Agent	Tested	Positive	% Positive	Flu A (H1)	Flu A (H3)	Flu A (Unk)	Flu B
Influenza	279	62	22.2%	0	11	17	34

Respiratory Agent	Tested	Positive	% Positive	P1	P2	P3	P4
Parainfluenza	113	0	0%	0	0	0	0

Respiratory Agent	Tested	Positive	% Positive	CoV-229E	CoV-OC43	CoV-NL63	CoV-HKU1
Coronavirus	47	1	2.1%	0	0	0	0

Respiratory Agent	Tested	Positive	% Positive
RSV	149	13	8.7%
Human Metapneumovirus	72	2	2.8%
Rhino-entero	62	14	22.6%
Adenovirus	62	0	0%



Cumulative number of positive influenza tests
By subtype, October 1, 2011 to present

	2009				Total
	A/H1	A/H3	A/Unknown	B	
Total Number positive	132	582	919	360	1993
% of Total number positive	7%	29%	46%	18%	100%

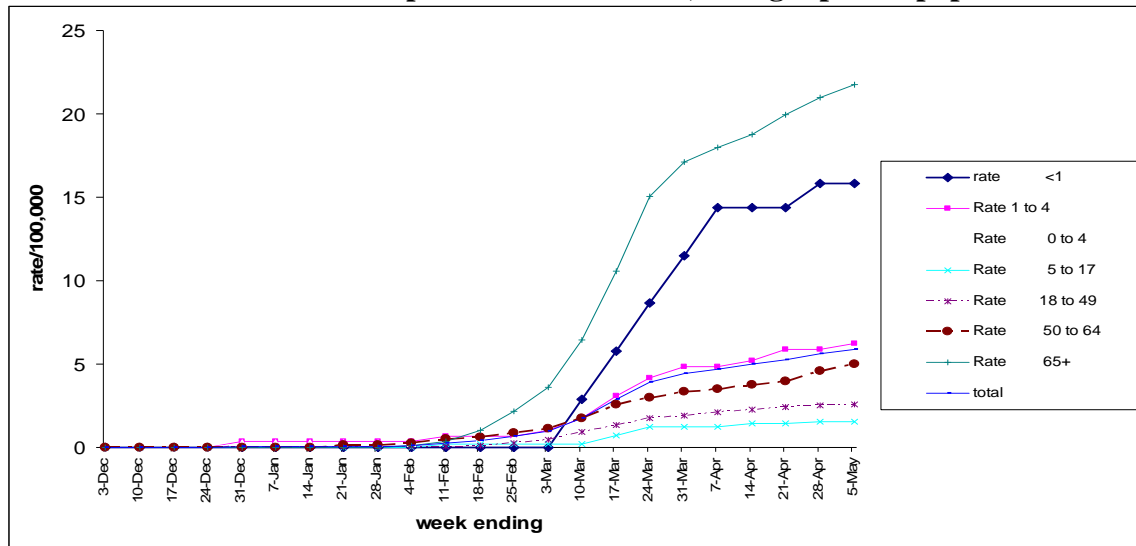
Influenza-associated Hospitalizations, October 1, 2011 to present

New hospitalizations this week 14

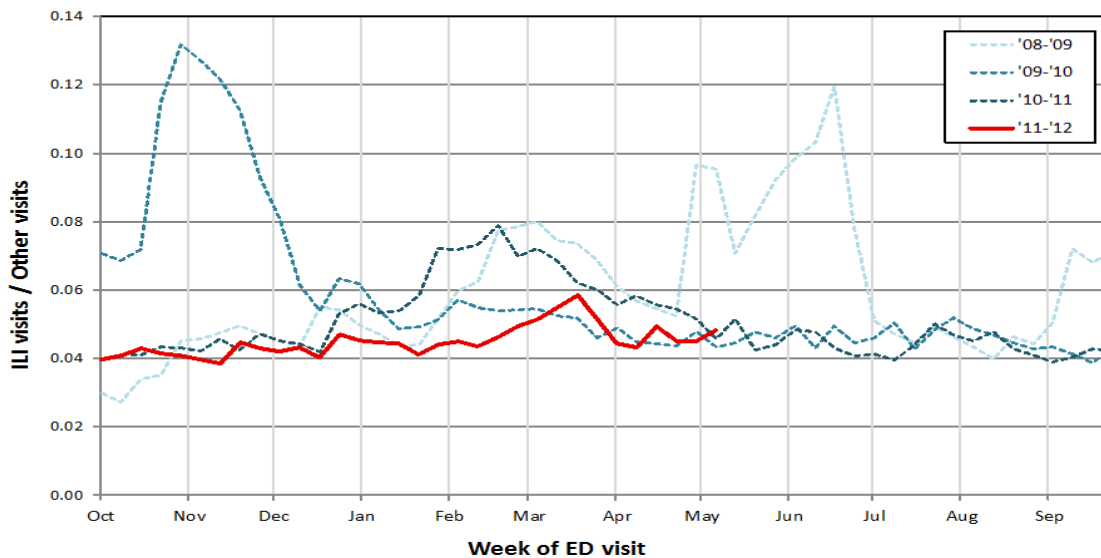
Age Group	Total Number Reported (year)	Influenza Subtypes				Admitted to ICU	Required Mechanical Ventilation
		A/H1	A/H3	A/Unknown	B		
< 1 year	12	0	1	8	3	4	0
0 to 4*	26	0	3	17	6	6	2
5 to 17	16	0	1	7	8	2	1
18 to 49	58	5	5	41	7	8	2
50 to 64	57	1	6	44	6	9	2
65 and over	162	3	21	126	12	18	2
Total	319	9	36	235	39	43	12

* Children < 1 year old are included in this category

Cumulative hospitalization rate /100,000 age specific population

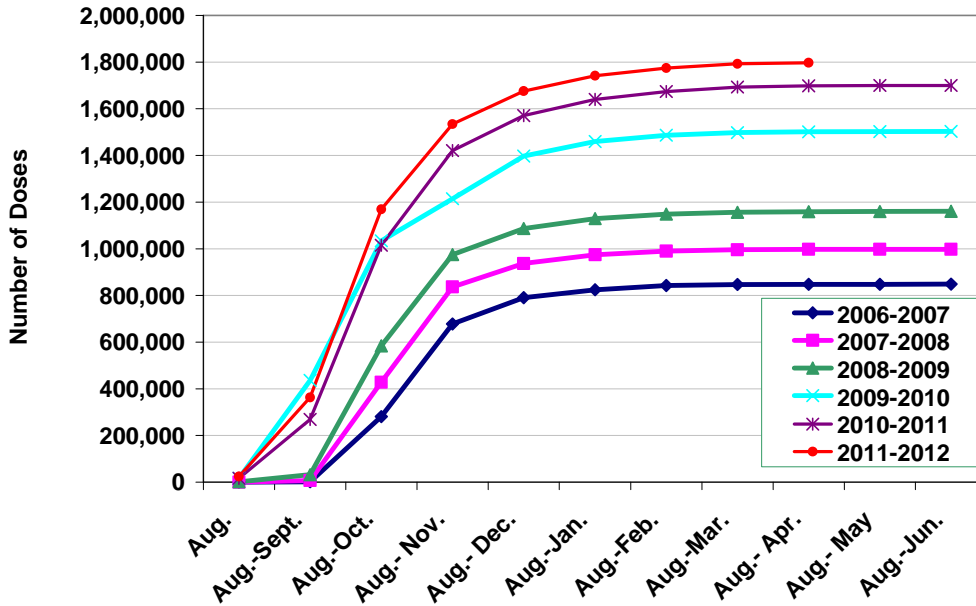


Weekly Influenza-like illness (ILI) Ratio, as reported by 46 Wisconsin hospital emergency departments, by year, through May 05, 2012.



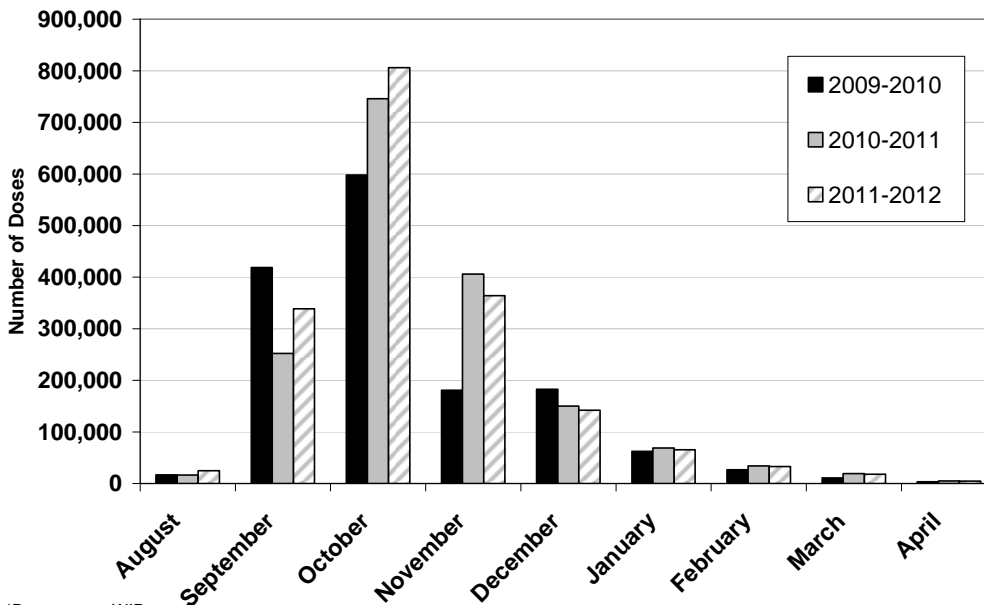
Seasonal Influenza Vaccination in Wisconsin Based on Doses Reported to the Wisconsin Immunization Registry (WIR) May 11, 2012

**Cumulative Doses of Seasonal Influenza Administered and Reported to the WIR,
2006-2012 Influenza Seasons**



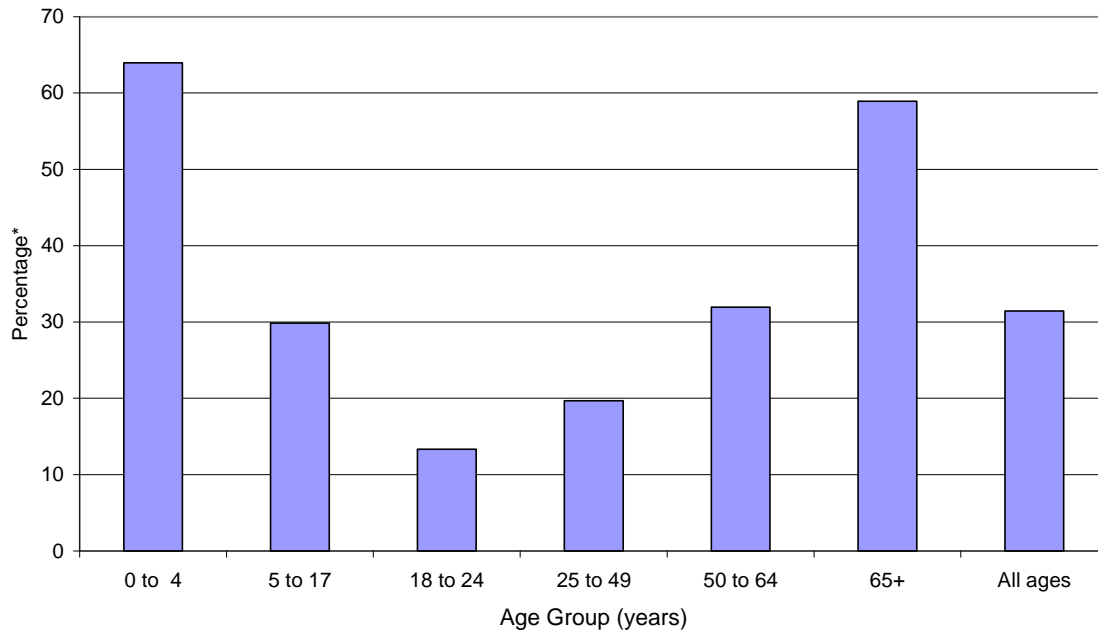
Data source: WIR
2011-2012 data through 4.30.12

**Number of Doses of Seasonal Influenza Vaccine Administered and Reported to
the WIR, by Month for Influenza Seasons 2009-2012**



*Data source: WIR,
2011-2012 data through 4.30.12

**Rates of Influenza Vaccination in Wisconsin by Age Group, 2011-2012 Influenza Season,
Based on Doses Reported to the Wisconsin Immunization Registry (WIR)**

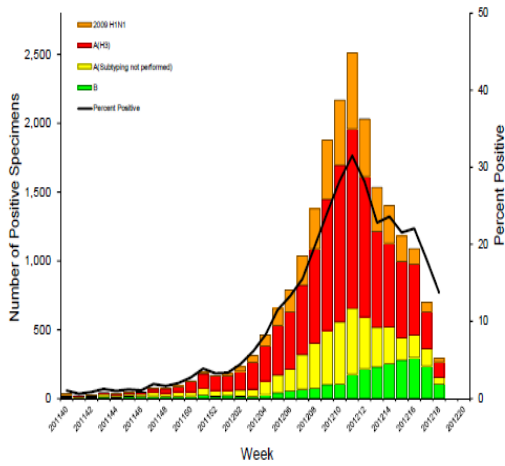


* Numerator: Number of persons recorded in the WIR as having received at least one dose of seasonal influenza vaccine between 8/1/2011 to 4/30/2012, by age group. Denominator source: 2010 Wisconsin Interactive Statistics on Health (WISH) population estimates, by age group

- These graphs include only doses of seasonal influenza vaccine administered and reported to the Wisconsin Immunization Registry (WIR).
- Data for 2011-2012 season is incomplete because of the expected lag between the vaccine administration date and the date reported to the WIR, which may be as short as one day or as long as several months, depending on the submitter. Therefore, the current season's data will be adjusted as additional data is received.
- While use of the WIR is not mandatory, the WIR receives data from a variety of sources, including health care providers, health maintenance organizations, local health departments and tribal health centers/clinics, schools and pharmacies.
- For additional information regarding the immunization data, please contact Stephanie Schauer, epidemiologist, with the Wisconsin Immunization Program at (608) 264-9884.

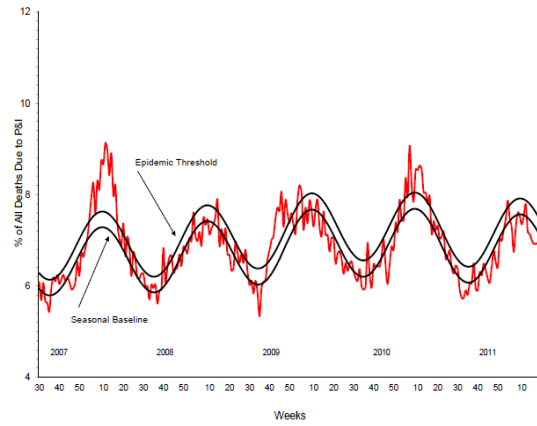
NATIONAL INFLUENZA SURVEILLANCE

Influenza Positive Tests Reported to CDC by U.S. WHO/NREVSS Collaborating Laboratories, National Summary, 2011-2012 Season



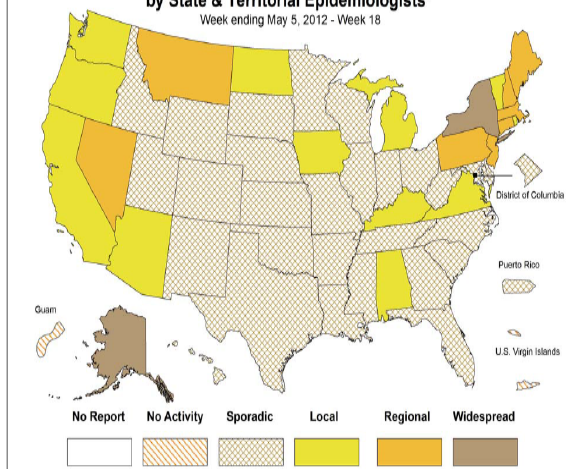
Pneumonia and Influenza (P&I) Mortality Surveillance: During week 18, 6.9% of all deaths reported through the 122-Cities Mortality Reporting System were due to P&I. This percentage was below the epidemic threshold of 7.5% for week 18.

Pneumonia and Influenza Mortality for 122 U.S. Cities
Week ending May 5, 2012



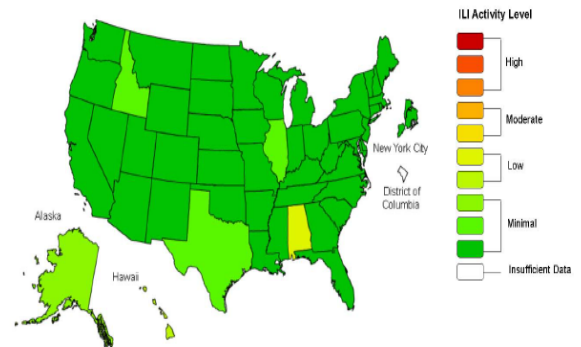
Weekly Influenza Activity Estimates Reported by State & Territorial Epidemiologists*

Week ending May 5, 2012 - Week 18



* This map indicates geographic spread & does not measure the severity of influenza activity

Influenza-Like Illness (ILI) Activity Level Indicator Determined by Data Reported to ILINet
2011-12 Influenza Season Week 18 ending May 05, 2012



*This map uses the proportion of outpatient visits to health care providers for influenza-like illness to measure the ILI activity level within a state. It does not, however, measure the extent of geographic spread of flu within a state. Therefore, outbreaks occurring in a single city could cause the state to display high activity levels.