

**Wisconsin State Laboratory of Hygiene
Board of Directors Meeting
December 13, 2016
Madison, Wisconsin**

DATE: December 6, 2016

TO: Dean Robert N. Golden, MD, UW-SMPH – Dr. Richard Moss, Designated Representative
Linda Seemeyer, Secretary, DHS – Karen McKeown, Designated Representative
Cathy Stepp, Secretary, DNR – Mark Aquino, Designated Representative
Ben Brancel, Secretary, DATCP –Michelle Wachter, Designated Representative
Jeffery Kindrai, Chair
James Morrison, Vice-Chair
Dr. Robert Corliss, Member
Barry Irmey, Member
James Wenzler, Member

Steven Geis, DNR Alternate
Gregory Pils, DNR Alternate
Charles Warzecha, DHS Alternate
Gilbert (Gil) Kelley, DATCP Alternate

FROM: Dr. Peter Shult, Interim Secretary
Interim Director, Wisconsin State Laboratory of Hygiene

RE: Wisconsin State Laboratory of Hygiene Board of Directors Meeting
Wisconsin State Laboratory of Hygiene
2601 Agriculture Drive
Madison, WI 53718
December 13, 2016
1:00p.m. — 4:00p.m.

C: Cynda DeMontigny
Kristine Hansbery
Dr. Patrice Held
Jan Klawitter
Dr. Daniel Kurtycz
Steve Marshall
Deborah Meltzer (UW-SMPH)
Marie Ruetten
John Shalkham
Steve Strebel
David Webb

**WISCONSIN STATE LABORATORY OF HYGIENE
BOARD OF DIRECTORS**

MEETING NOTICE

Tuesday, December 13, 2016

1:00p.m. – 4:00p.m.

MEETING LOCATION

**Wisconsin State Laboratory of Hygiene
2601 Agriculture Drive
Madison, WI 53718**

Notice is hereby given that the Wisconsin State Laboratory of Hygiene Board of Directors will convene at 1:00 p.m. on Tuesday, December 13th, 2016 at Wisconsin State Laboratory of Hygiene in Madison, Wisconsin.

Notice is further given that matters concerning Wisconsin State Laboratory of Hygiene issues, program responsibilities or operations specified in the Wisconsin Statutes, which arise after publication of this notice may be added to the agenda and publicly noticed no less than two hours before the scheduled board meeting if the board Chair determines that the matter is urgent.

Notice is further given that this meeting may be conducted partly or entirely by teleconference or videoconference.

Notice is further given that questions related to this notice, requests for special accommodations, or requests for a public appearance are addressed by the Wisconsin State Laboratory of Hygiene Administrative Offices by phone at (608) 890-0288 or in writing to the Wisconsin State Laboratory of Hygiene, 465 Henry Mall, Madison, Wisconsin, 53706.

ORDER OF BUSINESS: See agenda.

Respectfully submitted,



Peter A. Shult, PhD

Interim Secretary, Wisconsin State Laboratory of Hygiene Board of Directors
Interim Director, Wisconsin State Laboratory of Hygiene
December 6, 2016

Wisconsin State Laboratory of Hygiene
Board of Directors Meeting
December 13th, 2016
1:00 P.M. – 4:00 P.M.

Wisconsin State Laboratory of Hygiene
2601 Agriculture Drive
Madison, WI 53718

AGENDA

<u>PROCEDURAL ITEMS</u>	<u>PAGE</u>
Item 1. APPROVAL OF MINUTES	4
Item 2. REORGANIZATION OF AGENDA	9
Item 3. PUBLIC APPEARANCES	10
Item 4. BOARD MEMBERS' MATTERS	12
 <u>BUSINESS ITEMS</u>	
Item 5. SCIENTIFIC PRESENTATION	13
Item 6. FINANCIAL REPORT	14
Item 7. STRATEGIC MAP UPDATE	22
Item 8. WSLH DIRECTOR SEARCH UPDATE	23
Item 9. CONTRACTS REPORT	24
Item 10. DIRECTOR'S REPORT	28

~~~~~

Wisconsin State Laboratory of Hygiene  
Board of Directors Meeting  
December 13, 2016

**PROCEDURAL ITEMS**

**Item 1. APPROVAL OF MINUTES**

**Description of Item:**

The draft minutes of the August 16<sup>th</sup>, 2016 board meeting are submitted for approval.

**Suggested Board Action:**

Motion: Approve the draft minutes of the August 16<sup>th</sup>, 2016 board meeting as submitted.

**Staff Recommendation and Comments:**

Approve draft minutes.

Once approved, minutes become part of the public record and are posted on the WSLH website: <http://www.slh.wisc.edu/about/board/board-meetings-agendas-and-minutes/>.

**Wisconsin State Laboratory of Hygiene  
Board of Directors Meeting  
December 13<sup>th</sup>, 2016  
1:00 P.M – 4:00 P.M.  
2601 Agriculture Drive  
Madison, WI 53718**

**APPROVED MINUTES  
August 16, 2016**

**MEMBERS PRESENT:** Chair Jeffery Kindrai, Vice-Chair James Morrison, Charles Warzecha (on behalf of Karen McKeown), Dr. Robert Corliss, Dean Robert M. Golden, Dr. Richard Moss, Gil Kelley (on behalf of Michelle Wachter), Steve Geis (on behalf of Mark Aquino),

**WSLH STAFF PRESENT:** Dr. Peter Shult, Kristine Hansbery, Jan Klawitter, Steve Marshall, Cynda DeMontigny, Marie Ruetten, Steve Strebel, and Nathaniel Javid

**DNR STAFF PRESENT:** Ron Arneson

**GUESTS PRESENT:** None

***Chair Jeffery Kindrai called the meeting to order at 1:00 P.M.***

**Introductions from Dean Robert M. Golden, MD**

Dean Golden introduced himself to the Board and commended the lab on the quality of their new facility, noting he is proud of the new connection between the UW School of Medicine and Public Health (UW-SMPH) and the Wisconsin State Laboratory of Hygiene (WSLH). Dr. Rick Moss is the UW-SMPH's representative for the WSLH and the main point of contact. Dean Golden mentioned that he is also happy to assist the WSLH in connecting with the UW-SMPH.

**Item 1. APPROVAL OF MINUTES**

Approve the minutes of the June 21, 2016 Board Meeting as submitted. **Steve Geis** made a motion to approve, seconded by **Charles Warzecha**.

**Item 2. REORGANIZATION OF AGENDA**

There was no reorganization of the agenda.

### **Item 3. PUBLIC APPEARANCES**

There were no public appearances.

### **Item 4. BOARD MEMBERS' MATTERS**

Rick Moss noted that we are in a rapid phase of developing a search for the new WSLH Director. Dr. Moss also distributed the PVL for the Director position to the Board. Dr. Moss mentioned that Andrea Poehling (UW-SMPH) is in charge of the recruitment. Dr. Moss mentioned that the current PVL has elements of the past 2006 PVL. Letters of invitation will be going out to some members of the Board to serve on the search committee. We are still identifying members from the UW-SMPH to serve on the committee. In other news, the UW has formed an office of campus core services to oversee core laboratories. These cores will potentially be of value to the WSLH. Dr. Moss suggested that at some point it would be beneficial to have a subgroup serve as an interface.

### **Item 5. FY16 FOURTH QUARTER FINANCIAL REPORT**

#### **1) Marie Ruetten, Financial Manager, Wisconsin State Laboratory of Hygiene**

At the end of FY16, we have a net accrued balance of negative \$29,825, which is close to net \$0, but with negative \$715,476 budgeted, our performance was significantly better than expected. Our variance in total support and revenue is under by \$1,146,205 with total support and revenue at \$42,499,547. Our total expenses were under by \$1,831,856 at \$42,529,372 actual.

Compared to FY15, we are up in total support and revenue by \$89,294. Our total expenses have decreased compared to FY15 by \$1,915,523, giving us a net operating income gain of \$2,004,817 compared to FY15. As of June 30, 2016, our available unrestricted cash balance is \$3,992,794 compared to \$3,455,726 as of April 30, 2016.

### **Item 6. WSLH Engagement, Inclusion and Diversity (EID) Update**

#### **1) Jan Klawitter, Public Affairs Manager, Wisconsin State Laboratory of Hygiene**

Jan Klawitter gave the EID update to the Board. Employee engagement, inclusion and diversity (EID) are important components of the Office of the Vice Chancellor for Finance and Administration (VCFA) strategic plan. Specifically, the key EID goals in the plan are to attract, develop, and retain under-represented employees by building an open, dynamic and respectful learning and working environment while increasing the number of under-represented employees with a particular focus on supervisory and managerial positions. The goal is also to provide leadership and work with campus partners to attract and retain an outstanding and diverse faculty and staff by creating an

environment of respect and inclusiveness through opportunities for employee engagement.

WSLH staff participated in EID surveys administered by the VCFA's Office in 2012, 2014, and 2016. The main themes emerging from the surveys revolved around improving communication, training, and pay compensation. Our WSLH Financial Manager, Marie Ruetten served as the WSLH representative on the VCFA EID Council. In 2014 and 2015, six WSLH workgroups developed recommendations based on 2012 and 2014 survey data. This effort involved staff from across the WSLH, but efforts got delayed. This past spring (2016), our WSLH Strategic Leadership Team (SLT) recommitted to the EID Action Plan. Six workgroups re-formed into smaller teams with a focus on action plan items that can be accomplished by June 30, 2017. SLT's role will be to determine how to prioritize the recommendations. The workgroups recommendations have been developed across SLT and the groups have started to meet.

Jan Klawitter also mentioned our (first in many years) lab-wide summer picnic that took place on August 14, 2016. The picnic was a great success and already has helped in facilitating a greater sense of comradery amongst staff.

## **Item 7. STRATEGIC PRIORITIES UPDATE**

### **1) Steve Marshall, Assistant Director, Wisconsin State Laboratory of Hygiene**

Steve Marshall introduced the strategic priorities update to the Board. The strategic priorities are a component of the strategic map. We are currently in the second year of our strategic map, and will soon be thinking about what to do in our next cycle. One of the goals was to develop a tool for the Director to use to prioritize items in the strategic map. Part of the goal in doing this is to make things more data driven. We looked to Iowa's Hygienic Laboratory as a model for how this is done. Steve Marshall distributed copies of the tool to the Board and went through the details of the tabs, including the rating system for different activities. Mr. Marshall noted that there are different metrics in the tool, for example, to determine if one activity is financially sustainable. This type of tool has been successful at Iowa's laboratory, so we are optimistic it will be a positive addition to our plans.

## **Item 8. CONTRACTS REPORT**

### **2) Marie Ruetten, Financial Manager, Wisconsin State Laboratory of Hygiene**

Marie Ruetten presented the contracts report to the Board. We have one contract with the CDC, three with the Association of Public Health Laboratories (APHL), six with the Wisconsin Department of Health Services, and eighteen with the Wisconsin Department of Natural Resources. In all, our contracts total \$1,489,489. Ms. Ruetten asked the Board to refer to the packet for more details on the contracts.

## Item 9. DIRECTOR'S REPORT

### 1) Dr. Peter Shult, Interim Director, Wisconsin State Laboratory of Hygiene

Dr. Shult mentioned that at the last Board meeting it was discussed to reduce the amount of Board meetings from five per year to four per year. At this meeting it was determined that we, as a Board, would vote in the affirmative on reducing the number of yearly Board meetings by one meeting, and thus, shifting the schedule. Board meetings would be on the second Tuesday in December and the third Tuesday thereafter. Therefore, the next Board meeting would take place on December 13<sup>th</sup>, followed by March 21<sup>st</sup>, June 20<sup>th</sup>, and September 19<sup>th</sup>. After minimal discussion on ensuring this would comply with budget and holiday schedules, **Jim Morrison** made a motion to reduce our Board meetings to a quarterly basis with the above proposed future dates. The motion was seconded by **Steve Geis** and the Board voted unanimously to reduce the number of Board meetings to four a year (quarterly), accepting the future meeting dates above.

Dr. Shult had the Board refer to the packet for more information on public and environmental health incidents including the Zika virus, *Elizabethkingia anophelis*, and Novel Swine Influenza A H1. The southern and gulf states have been in contact with the WSLH regarding Zika and our work as a reference laboratory for our partner states. We are receiving a steady flow of specimens in the lab, and we have the capacity to withstand an increase in specimens. In part of conducting our year-round flu surveillance, we did receive one case of Novel Swine Influenza A H1. These are often associated with county and state fairs. Dr. Shult reminded the Board to refer to the packet for further details.

Dr. Shult mentioned that past WSLH Director, Dr. Charles Brokopp, received a prominent letter of recognition from the College of American Pathologists (CAP), for his active support and participation in the CAP peer inspection service.

**Chair Jeffery Kindrai** made a motion to adjourn meeting at 3:00 P.M. **Dr. Bob Corliss** seconded the motion. The motion passed unanimously and the meeting was adjourned.

Respectfully submitted by:



Peter A. Shult, PhD  
Interim Secretary, Wisconsin State Laboratory of Hygiene Board of Directors



Wisconsin State Laboratory of Hygiene  
Board of Directors Meeting  
December 13, 2016

**PROCEDURAL ITEMS**

**Item 2. REORGANIZATION OF AGENDA**

**Description of the Item:**

Board members may suggest changes in the order in which agenda items are discussed.

**Suggested Board Action:**

None.

**Staff Recommendation and Comments:**

Reorganize the agenda if requested by the Board.

**Wisconsin State Laboratory of Hygiene  
Board of Directors Meeting  
December 13, 2016**

**PROCEDURAL ITEMS**

**Item 3. PUBLIC APPEARANCES**

**Description of the Item:**

Under the board's *Policies and Procedures* nonmembers are invited to make presentations.

**Suggested Board Action:**

Follow WSLH *Policies and Procedures*.

**Staff Recommendation and Comments:**

Follow WSLH *Policies and Procedures*.

*Per Policies and Procedures of the Wisconsin State Laboratory of Hygiene Board of Directors:*

§6.12 *Speaking privileges.* When the board is in session, no persons other than laboratory staff designated by the director shall be permitted to address the board except as hereinafter provided:

- (a) A committee report may be presented by a committee member who is not a member of the board.
- (b) A board or committee member in the course of presenting a matter to the board may request staff to assist in such a presentation.
- (c) If a board member directs a technical question for clarification of a specific issue to a person not authorized in this section, the Chair may permit such a person to respond.
- (d) The board may by majority vote or by decision of the Chair allow persons not otherwise authorized in this section to address the board if the situation warrants or the following criteria is followed:
  - (1) Written requests for public appearances on specific current agenda items shall be made to the board Secretary no later than two working days prior to the meetings. The request shall outline the reasons for the request including the subject matter to be discussed in as much detail as is feasible prior to the meeting of the board. Those requesting an appearance may, at or prior to the board meeting, provide board members copies of any written materials to be presented or a written statement of a position.
  - (2) Individual presentations will be limited to five minutes, unless otherwise authorized by the Chair.
  - (3) To schedule an appearance before the Wisconsin State Laboratory of Hygiene Board of Directors, contact the board Secretary, c/o Director, Wisconsin State Laboratory of Hygiene, 465 Henry Mall, Madison, Wisconsin 53706. Telephone (608) 890-0288. The subject or subjects to be discussed must be identified.
  - (4) The Wisconsin State Laboratory of Hygiene "Guidelines for Citizen Participation in WSLH Board Meetings" are published on its website: <http://www.slh.wisc.edu/index.shtml> and printed copies are available on request. (See Appendix 5) [Section §6.12 approved 5/27/03 board meeting.]

## Appendix 5

### Guidelines for Citizen Participation at WSLH Board Meetings

The Wisconsin State Laboratory of Hygiene board provides opportunities for citizens to appear before the board to provide information to the board on items listed on the agenda. Such appearances shall be brief and concise. In order to accommodate this participation in the allotted time, the guidelines are as follows:

- A. Items to be brought before the board:
  - 1. The board Secretary and Chair will assign a specific time on the agenda to hear public comment when a request to speak has been received from a member of the public.
  - 2. Individuals or organizations will be limited to a total of five (5) minutes to make a presentation to the board. Following the presentation board members may ask clarifying questions.
  - 3. An organization is limited to one (1) spokesperson on an issue.
  - 4. On complex issues, individuals wishing to appear before the board are encouraged to submit written materials to the board Secretary in advance of the meeting so the board may be better informed on the subject in question. Such information should be submitted to the board Secretary for distribution to all board members no later than seven (7) working days before the board meeting.
  - 5. No matters that are in current litigation may be brought before the board.
- B. The board encourages individuals to confine their remarks to broad general policy issues rather than the day-to-day operations of the Wisconsin State Laboratory of Hygiene.
- C. Citizens who have questions for board members should ask these questions prior to the board meeting, during any recess during the board proceedings, or after board adjournment.
- D. Written requests to appear before the WSLH Board of Directors should be submitted no later than two (2) working days prior to a scheduled board meeting.
- E. Submit written requests to:  
Secretary, Wisconsin State Laboratory of Hygiene Board of Directors  
C/O WSLH Director  
465 Henry Mall  
Madison, WI 53706  
Telephone: (608) 890-0288  
Email: [nathaniel.javid@slh.wisc.edu](mailto:nathaniel.javid@slh.wisc.edu)

Wisconsin State Laboratory of Hygiene  
Board of Directors Meeting  
December 13, 2016

**BUSINESS ITEMS**

**Item 4. BOARD MEMBERS' MATTERS**

**Description of the Item:**

Board Members' Matters will present board members with the opportunity to ask questions and/or discuss issues related to the Wisconsin State Laboratory of Hygiene.

**Suggested Board Action:**

Receive for information.

**Staff Recommendations and Comments:**

Receive for information.

Wisconsin State Laboratory of Hygiene  
Board of Directors Meeting  
December 13, 2016

**BUSINESS ITEMS: SCIENTIFIC PRESENTATION**

**Item 5. NewSTEPS: “Wisconsin Newborn Screening Program: A focus on continuous quality improvement”**

1) *Dr. Patrice Held, Co-Director, WSLH Newborn Screening*

**Description of the Item:**

This presentation will review newborn screening metrics related to the pre-analytical, analytical, and post-analytical phases of testing, highlighting several quality improvement initiatives that have impacted outcomes and improved clinical care.

**Suggested Board Action:**

Receive for information.

**Staff Recommendations and Comments:**

Receive for information.

Wisconsin State Laboratory of Hygiene  
Board of Directors Meeting  
December 13, 2016

**BUSINESS ITEMS**

**Item 6. FY17 FIRST QUARTER FINANCIAL REPORT**

**Description of the Item:**

Marie Ruetten, Financial Manager, WSLH, will provide the first quarter financial report to the Board.

**Suggested Board Action:**

Review and provide input.

**Staff Recommendations and Comments:**

Receive for information.

WISCONSIN STATE LABORATORY OF HYGIENE

FINANCIAL REPORT

FISCAL YEAR 2017 - JULY, 2016 THROUGH OCTOBER, 2016

October 31, 2016

Contents

---

FINANCIAL STATEMENTS

Statement of income

Comparative income statement

Comparative balance sheet

Statement of cash flows

Notes to the financial statements

---

**Wisconsin State Laboratory of Hygiene  
Board of Directors Meeting  
December 13, 2016**

**WISCONSIN STATE LABORATORY OF HYGIENE  
STATEMENT OF INCOME  
For the period July 1, 2016 through October 31, 2016**

|                                               | FY 17<br>APPROVED<br>ANNUAL<br>BUDGET | FY17<br>YEAR- TO-<br>DATE<br>BUDGET | FY17<br>YEAR- TO-<br>DATE<br>ACTUAL | VARIANCE<br>Over/(Under) | VARIANCE<br>% of<br>BUDGET |
|-----------------------------------------------|---------------------------------------|-------------------------------------|-------------------------------------|--------------------------|----------------------------|
| <b>SUPPORT AND REVENUE</b>                    |                                       |                                     |                                     |                          |                            |
| Laboratory Services Revenues (Note 3)         |                                       |                                     |                                     |                          |                            |
| Agency                                        | \$ 6,255,902                          | \$ 2,018,535                        | \$ 2,372,339                        | \$ 353,804               | 17.5%                      |
| Nonagency                                     | 18,383,466                            | 6,349,582                           | 6,394,788                           | 45,206                   | 0.7%                       |
| GPR Funding                                   | 11,300,000                            | 3,763,594                           | 3,694,907                           | (68,687)                 | -1.8%                      |
| OWI Fund Revenues                             | 1,605,900                             | 522,945                             | 525,806                             | 2,861                    | 0.5%                       |
| Grant Funding                                 | 5,615,303                             | 2,125,407                           | 2,079,909                           | (45,498)                 | -2.1%                      |
| Interest Income                               | 48,000                                | 16,000                              | 20,017                              | 4,017                    | 25.1%                      |
| <b>TOTAL SUPPORT AND REVENUE</b>              | <b>43,208,571</b>                     | <b>14,796,063</b>                   | <b>15,087,766</b>                   | <b>291,703</b>           | <b>2.0%</b>                |
| <b>EXPENSES</b>                               |                                       |                                     |                                     |                          |                            |
| Salaries                                      | 17,470,470                            | 5,623,482                           | 5,557,734                           | (65,748)                 | -1.2%                      |
| Fringe Benefits                               | 6,999,528                             | 2,569,405                           | 2,447,504                           | (121,901)                | -4.7%                      |
| Supplies & Services                           | 13,226,626                            | 4,553,528                           | 4,303,308                           | (250,220)                | -5.5%                      |
| Transfer Overhead to UW                       | 873,868                               | 322,972                             | 306,591                             | (16,381)                 | -5.1%                      |
| Building Rent                                 | 2,849,096                             | 957,644                             | 852,917                             | (104,727)                | -10.9%                     |
| Depreciation                                  | 1,760,183                             | 579,536                             | 600,019                             | 20,483                   | 3.5%                       |
| Bad Debt Expense                              | 24,000                                | 8,000                               | 3,154                               | (4,846)                  | -60.6%                     |
| Interest Expense                              | 4,800                                 | 1,600                               | 3,509                               | 1,909                    | 119.3%                     |
| <b>TOTAL EXPENSES</b>                         | <b>43,208,571</b>                     | <b>14,616,167</b>                   | <b>14,074,736</b>                   | <b>(541,431)</b>         | <b>-3.7%</b>               |
| <b>NET OPERATING INCOME (LOSS)</b>            | <b>\$ -</b>                           | <b>\$ 179,896</b>                   | <b>\$ 1,013,030</b>                 | <b>\$ 833,134</b>        |                            |
| Difference between Depreciation and Capital   | 1,229,733                             | 304,536                             | 177,601                             | (126,935)                |                            |
| <b>CASH BASIS NET OPERATING INCOME (LOSS)</b> | <b>\$ 1,229,733</b>                   | <b>\$ 484,432</b>                   | <b>\$ 1,190,631</b>                 | <b>\$ 706,199</b>        |                            |



**Wisconsin State Laboratory of Hygiene  
Board of Directors Meeting  
December 13, 2016**

**WISCONSIN STATE LABORATORY OF HYGIENE  
COMPARATIVE INCOME STATEMENT  
For the 4 months ended October 31, 2016 and October 31, 2015**

|                                               | 4 Months<br>Actual FY17 | 4 Months<br>Actual FY16 | Variance<br>Over/(Under) | Percentage<br>Change |
|-----------------------------------------------|-------------------------|-------------------------|--------------------------|----------------------|
| <b>SUPPORT AND REVENUE</b>                    |                         |                         |                          |                      |
| Laboratory Services Revenues (Note 3)         |                         |                         |                          |                      |
| Agency                                        | \$ 2,372,339            | \$ 1,983,396            | \$ 388,943               | 19.6%                |
| Nonagency                                     | 6,394,788               | 6,208,290               | 186,498                  | 3.0%                 |
| GPR Funding                                   | 3,694,907               | 3,707,259               | (12,352)                 | -0.3%                |
| OWI Fund Revenues                             | 525,806                 | 574,699                 | (48,893)                 | -8.5%                |
| Grant Funding                                 | 2,079,909               | 1,798,040               | 281,869                  | 15.7%                |
| Interest Income                               | 20,017                  | 4,819                   | 15,198                   | 315.4%               |
| <b>TOTAL SUPPORT AND REVENUE</b>              | <b>15,087,766</b>       | <b>14,276,503</b>       | <b>811,263</b>           | <b>5.7%</b>          |
| <b>EXPENSES</b>                               |                         |                         |                          |                      |
| Salaries                                      | 5,557,734               | 5,698,305               | (140,571)                | -2.5%                |
| Fringe Benefits                               | 2,447,504               | 2,584,606               | (137,102)                | -5.3%                |
| Supplies & Services                           | 4,303,308               | 4,157,835               | 145,473                  | 3.5%                 |
| Transfer Overhead to UW                       | 306,591                 | 264,553                 | 42,038                   | 15.9%                |
| Building Rent                                 | 852,917                 | 795,226                 | 57,691                   | 7.3%                 |
| Depreciation                                  | 600,019                 | 624,178                 | (24,159)                 | -3.9%                |
| Bad Debt Expense                              | 3,154                   | 4,922                   | (1,768)                  | -35.9%               |
| Interest Expense                              | 3,509                   | 920                     | 2,589                    | 281.4%               |
| Loss From Disposal Of Assets                  | -                       | 905                     | (905)                    | -100.0%              |
| <b>TOTAL EXPENSES</b>                         | <b>14,074,736</b>       | <b>14,131,450</b>       | <b>(56,714)</b>          | <b>-0.4%</b>         |
| <b>NET OPERATING INCOME (LOSS)</b>            | <b>\$ 1,013,030</b>     | <b>\$ 145,053</b>       | <b>\$ 867,977</b>        |                      |
| Difference between Depreciation and Capital   | 177,601                 | 360,568                 | (182,967)                |                      |
| <b>CASH BASIS NET OPERATING INCOME (LOSS)</b> | <b>\$ 1,190,631</b>     | <b>\$ 505,621</b>       | <b>\$ 685,010</b>        |                      |

**WISCONSIN STATE LABORATORY OF HYGIENE**  
**COMPARATIVE BALANCE SHEET**  
As of October 31, 2016 and June 30, 2016

**ASSETS**

|                                             | <u>October 31, 2016</u>     | <u>June 30, 2016</u>        |
|---------------------------------------------|-----------------------------|-----------------------------|
| <b>CURRENT ASSETS</b>                       |                             |                             |
| Cash                                        | \$ 11,281,969               | \$ 11,305,134               |
| Cash-restricted-newborn screening surcharge | 2,419,499                   | 2,538,451                   |
| Net accounts receivables (Note 2)           | 4,296,106                   | 3,105,813                   |
| Other receivables                           | 262,189                     | 743,227                     |
| Inventories                                 | 54,270                      | 87,324                      |
| Prepaid expenses                            | 287,640                     | 165,006                     |
| Total current assets                        | <u>18,601,673</u>           | <u>17,944,955</u>           |
| <b>EQUIPMENT AND BUILDING IMPROVEMENTS</b>  |                             |                             |
| Equipment                                   | 25,127,848                  | 24,901,000                  |
| Building improvements                       | 7,211,782                   | 7,211,782                   |
|                                             | <u>32,339,630</u>           | <u>32,112,782</u>           |
| Less accumulated depreciation               | <u>(23,778,689)</u>         | <u>(23,374,240)</u>         |
| Total net fixed assets                      | <u>8,560,941</u>            | <u>8,738,542</u>            |
| <b>Total Assets</b>                         | <u><u>\$ 27,162,614</u></u> | <u><u>\$ 26,683,497</u></u> |

**LIABILITIES AND EQUITY**

**CURRENT LIABILITIES**

|                                      |                  |                  |
|--------------------------------------|------------------|------------------|
| Salaries payable                     | \$ 154,518       | \$ 507,402       |
| Accounts payable                     | 1,007,701        | 909,966          |
| Newborn screening surcharge payable  | 2,419,499        | 2,538,451        |
| Accrued expenses                     | 77,190           | 140,767          |
| Proficiency testing deferred revenue | 790,498          | 969,145          |
| Newborn screening deferred revenue   | 2,498,733        | 2,416,322        |
| Compensated Absences (Note 5)        | 657,981          | 668,222          |
| Total current liabilities            | <u>7,606,120</u> | <u>8,150,275</u> |

**LONG TERM DEBT**

|                               |                         |                         |
|-------------------------------|-------------------------|-------------------------|
| Compensated Absences (Note 5) | <u>1,613,972</u>        | <u>1,649,847</u>        |
| Total long term debt          | <u>1,613,972</u>        | <u>1,649,847</u>        |
| <b>Total Liabilities</b>      | <u><u>9,220,092</u></u> | <u><u>9,800,122</u></u> |

**EQUITY**

|                                       |                             |                             |
|---------------------------------------|-----------------------------|-----------------------------|
| Retained earnings-restricted (Note 4) |                             |                             |
| Operating contingency                 | <u>1,700,516</u>            | <u>1,700,516</u>            |
| Total restricted retained earnings    | <u>1,700,516</u>            | <u>1,700,516</u>            |
| Net Operating Income (Loss)           | 1,013,030                   | (29,825)                    |
| Retained earnings-unrestricted        | 9,800,260                   | 9,783,968                   |
| Contributed capital                   | <u>5,428,716</u>            | <u>5,428,716</u>            |
| Total unrestricted retained earnings  | <u>16,242,006</u>           | <u>15,182,859</u>           |
| <b>Total Equity</b>                   | <u>17,942,522</u>           | <u>16,883,375</u>           |
| <b>Total Liabilities and Equity</b>   | <u><u>\$ 27,162,614</u></u> | <u><u>\$ 26,683,497</u></u> |

|                     |            |           |
|---------------------|------------|-----------|
| Contingency Funding | 10,995,553 | 9,794,680 |
|---------------------|------------|-----------|

**WISCONSIN STATE LABORATORY OF HYGIENE**  
**STATEMENT OF CASH FLOWS**  
For the Period July 1, 2016 through October 31, 2016

**CASH FLOWS FROM OPERATING ACTIVITIES**

|                                                                                   |               |
|-----------------------------------------------------------------------------------|---------------|
| Net income                                                                        | \$ 1,013,030  |
| Adjustments to reconcile net income to net cash provided by operating activities: |               |
| Depreciation                                                                      | 600,019       |
| Changes in working capital components:                                            |               |
| (Increase) in net accounts receivables                                            | (1,190,293)   |
| Decrease in other receivables                                                     | 481,038       |
| Decrease in inventories                                                           | 33,054        |
| (Increase) in prepaid expenses                                                    | (122,634)     |
| (Decrease) in salaries payable                                                    | (352,884)     |
| Increase in accounts payable                                                      | 97,735        |
| (Decrease) in newborn screening surcharge payable                                 | (118,952)     |
| (Decrease) in accrued expenses                                                    | (63,577)      |
| (Decrease) in proficiency testing deferred revenue                                | (178,647)     |
| Increase in newborn screen deferred revenue                                       | <u>82,411</u> |
| <br>Net cash provided (used) in operating activities                              | <br>280,300   |

**CASH FLOWS FROM INVESTING ACTIVITIES**

|                                                       |                      |
|-------------------------------------------------------|----------------------|
| Purchase of equipment and physical plant improvements | <u>(422,417)</u>     |
| <br>Net cash (used in) investing activities           | <br><u>(422,417)</u> |

**CASH FLOWS FROM FINANCING ACTIVITIES**

|                                                      |               |
|------------------------------------------------------|---------------|
| Principal payment on Capital Lease                   | <u>-</u>      |
| <br>Net cash provided (used in) financing activities | <br><u>-</u>  |
| <br>Net increase (decrease) in cash                  | <br>(142,117) |

**Cash:**

|            |                                 |
|------------|---------------------------------|
| Beginning  | <u>13,843,585</u>               |
| <br>Ending | <br><u><u>\$ 13,701,468</u></u> |

**WISCONSIN STATE LABORATORY OF HYGIENE**  
**NOTES TO THE FINANCIAL STATEMENTS**  
For the period July 1, 2016 through October 31, 2016

**NOTE 1 –NATURE OF BUSINESS AND SIGNIFICANT ACCOUNTING POLICIES**

Nature of Business:

- The Wisconsin State Laboratory of Hygiene (WSLH) is a governmental institution which provides medical, industrial and environmental laboratory testing and related services to individuals, private and public agencies, including the Department of Natural Resources (DNR) and the Department of Health Services (DHS). Approximately 75% of the WSLH operating revenues are program revenues, including contracts, grants, and fee-for-service billing. The remainder are general purpose revenues (GPR), which are Wisconsin state general fund dollars.

Budgetary Data:

- Fiscal Year 2016-2017 operating budget amounts were approved by the WSLH Board on June 21, 2016.

Basis of Presentation:

- The financial statements have been prepared on a modified accrual basis following Generally Accepted Accounting Principles (GAAP).

Basis of Accounting:

- Revenues are recognized at the completion of the revenue generating processes. Fee-for-service revenues are generally recognized in the period services are completed.
- Revenues from GPR, OWI, Grants, and expense reimbursement contracts for salaries, fringe benefits, capital, and supplies are recognized as expended.
- Expenses are recognized and accrued when the liability is incurred.

Estimates and assumptions:

- The preparation of financial statements in conformity with generally accepted accounting principles requires management to make estimates and assumptions that affect the amounts reported in the financial statements and accompanying footnotes. Actual results could differ from those estimates.

Assets:

- Cash is considered restricted if, by prior agreement with an outside entity, it must be segregated for future use by the outside entity or by WSLH at the outside entity's behest. As of October 31, 2016 available cash is restricted in an amount equal to the newborn screening surcharge payable to the Wisconsin Department of Health Services.
- Accounts receivable are reported at net realizable value. Net realizable value is equal to the gross amount of receivables less an estimated allowance for uncollectible amounts.
- Inventory is stated at cost (first in, first-out method).
- Equipment and building improvements are carried at cost. Expenditures for assets in excess of \$5,000 are capitalized. Depreciation is computed by the straight-line method.

Liabilities

- A liability for unearned revenue is recognized for prepaid receipts for WSLH-provided Proficiency Testing programs and for prepaid newborn screening tests.

**NOTE 2- ACCOUNTS RECEIVABLE**

- Accounts receivable and allowance for uncollectible account balances as of October 31, 2016 and June 30, 2016 are as follows:

|                           | <u>October 31, 2016</u> | <u>June 30, 2016</u> |
|---------------------------|-------------------------|----------------------|
| Accounts Receivable Total | \$4,659,912             | \$3,495,123          |
| Allowance for bad debt    | <u>(363,806)</u>        | <u>(389,310)</u>     |
| Net Receivables           | \$4,296,106             | \$3,105,813          |

**NOTE 3- LABORATORY SERVICES REVENUES**

- At the Board’s request, Laboratory Service Revenues on the Income Statement have been divided into two groups, Agency and Non-Agency, as follows:

Agency:

- Department of Natural Resources
- Department of Health Services
- Department of Agriculture, Trade and Consumer Protection
- University of Wisconsin
- Office of Justice Assistance
- Wisconsin Emergency Management

Non-Agency:

- UW Hospital Authority
- Medicare and Medicaid
- Municipalities
- Law Enforcement Agencies
- Proficiency Testing
- Newborn Screening
- All other revenues from individuals, businesses, clinics, and hospitals.

**NOTE 4- RETAINED EARNINGS - RESTRICTED**

- The operating contingency is computed annually and reflects two months of salary and fringe benefit cost for positions funded from program revenues. The contingency fund is considered adequately funded if working capital is greater than the contingency fund restriction. As of October 31, 2016 working capital (current assets less current liabilities) was \$10,995,553 thereby meeting the target contingency reserve requirement of \$1,700,516.

**NOTE 5- COMPENSATED ABSENCES**

- GASB Statement No. 16, “Accounting for Compensated Absences,” establishes standards of accounting and reporting for compensated absences by state and local governmental entities for which employees will be paid such as vacation, sick leave, and sabbatical leave. Using the criteria in Statement 16, a liability for compensated absences that is attributable to services already rendered and that is not contingent on a specific event that is outside the control of the State and its employees has been accrued. The table below details the liability by benefit category:

|              | Total              | Vacation         | Pers Hol        | Legal<br>Hol   | Sabbatical         |
|--------------|--------------------|------------------|-----------------|----------------|--------------------|
| Current      | \$657,981          | \$395,091        | \$90,485        | \$6,582        | \$165,823          |
| Long<br>Term | 1,613,972          | -                | -               | -              | 1,613,972          |
|              | <u>\$2,271,953</u> | <u>\$395,091</u> | <u>\$90,485</u> | <u>\$6,582</u> | <u>\$1,779,795</u> |

**Wisconsin State Laboratory of Hygiene  
Board of Directors Meeting  
December 13, 2016**

**BUSINESS ITEMS**

**Item 7. STRATEGIC MAP UPDATE**

1) Steve Marshall, Assistant Director, WSLH

**Description of the Item:**



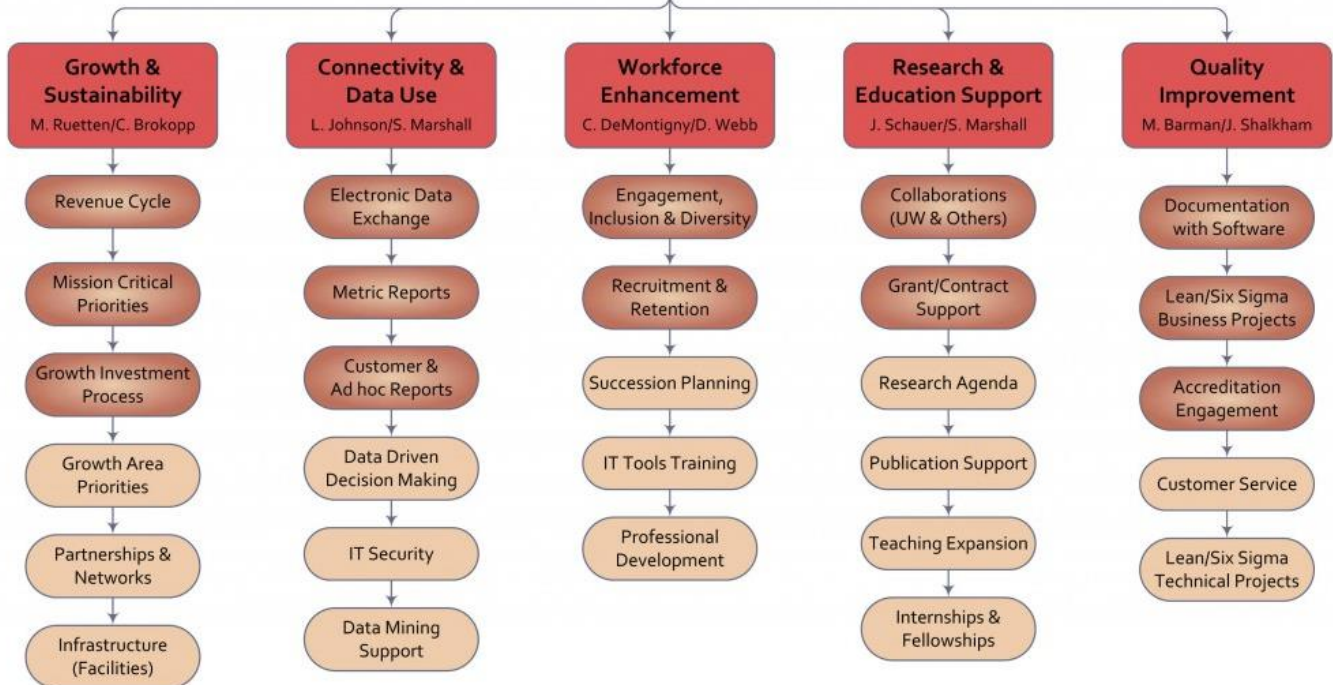
2016 Priorities\*

**STRATEGIC MAP  
2015-2017**

**MISSION:** To improve and protect the human condition by providing accurate and precise testing, service, research and education.

**Advance the Mission and Vision of the WSLH**  
S. Marshall/D. Webb

**VISION:** To be a global leader in improving quality of life through the advancement of science-based public, environmental and occupational health laboratory practice and policy.



\*2016 priorities chosen based on relative importance, projects already underway, and progression to other objectives.

Last Updated 2/9/2016

**Suggested Board Action:**

Receive for information.

**Staff Recommendations and Comments:**

Receive for information.

**Wisconsin State Laboratory of Hygiene  
Board of Directors Meeting  
December 13, 2016**

**BUSINESS ITEMS**

**Item 8. WSLH DIRECTOR SEARCH UPDATE**

- 1) Dr. Peter Shult, Interim Director, WSLH

**Description of the Item:**

The assured consideration date for applications was November 30. The committee will proceed in narrowing the candidate pool to a list of finalists, which they will present to Dr. Rick Moss. Finalists will be invited for full-day interviews with various groups and individuals associated with the WSLH. They will give public presentations, open to all members of the WSLH (and the public). The finalist visits will take place in early 2017, with a new director named soon thereafter.

**Suggested Board Action:**

Receive for information.

**Staff Recommendations and Comments:**

Receive for information.

Wisconsin State Laboratory of Hygiene  
Board of Directors Meeting  
December 13, 2016

**BUSINESS ITEMS**

**Item 9. CONTRACTS REPORT**

**Description of the Item:**

The table on the following pages contains the major grants and contracts that have been received since the last Board meeting. WSLH staff will be available to provide more details on these grants and contracts.

**Suggested Board Action:**

Receive for information.

**Staff Recommendations and Comments:**

There are no contracts requiring board approval.



| New/Renewed Contracts since August 1, 2016 |                       |            |           |                                                                     |                                                                                                                                                                                                                                                                                                                                                                        |              |           |
|--------------------------------------------|-----------------------|------------|-----------|---------------------------------------------------------------------|------------------------------------------------------------------------------------------------------------------------------------------------------------------------------------------------------------------------------------------------------------------------------------------------------------------------------------------------------------------------|--------------|-----------|
| CUSTOMER                                   | CONTRACT NAME         | START DATE | END DATE  | ACCOUNT NAME                                                        | SCOPE OF WORK                                                                                                                                                                                                                                                                                                                                                          | AWARD AMOUNT | WSLH DEPT |
| Wisconsin Department of Health Services    | 122075 - PO TBD       | 8/1/2016   | 7/31/2017 | ELC Project B: Cross Cutting Laboratory Capacity (PPHF)             | Annual maintenance agreement, freezer purchase, transport of invasive bacteria, travel to ELC and APHL annual meetings and personnel support.                                                                                                                                                                                                                          | \$ 185,000   | CDD       |
| Wisconsin Department of Health Services    | 120216 - PO 8995      | 7/1/2016   | 7/31/2017 | ELC Project C: Electronic Laboratory Reporting                      | Systems architects for PHIL maintenance and onboarding and updating clinical labs; multi state connectivity for MN, IL and MI; transform updates and maintenance of PHIL and PHIN servers.                                                                                                                                                                             | \$ 86,016    | CDD       |
| Wisconsin Department of Health Services    | 10000006938 - PO 8711 | 8/1/2016   | 7/31/2017 | ELC Project E: Ebola - Enhanced Laboratory and Biosafety Capacity   | Updates to Ebola and emerging pathogen biosafety guidance and communication with WCLN partners; update and maintain biosafety/biosecurity guidance materials and provide training and mini audits to WCLN labs.                                                                                                                                                        | \$ 46,429    | CDD       |
| Wisconsin Department of Health Services    | 125320 - PO TBD       | 8/1/2016   | 7/31/2017 | ELC Project I: Enterics                                             | Travel to FoodCORE, INFORM, PulseNet, Calicinet and CDC-NGS meetings and trainings. BioNumerics license and MiSeq, TB server, Qubit and Fluorometer purchases. Biofire, WGS and norovirus reagents and supplies, testing, and transport.                                                                                                                               | \$ 680,142   | CDD       |
| Wisconsin Department of Health Services    | 122074 - PO TBD       | 8/1/2016   | 7/31/2017 | ELC Project K6: HAI - State CRE Lab Capacity                        | Testing for carbapenemase production and PFGE testing among carbapenemase producing isolates. Confirmatory antibiotic susceptibility testing on isolates of CRE, validate and implement a CDC developed PCR assay to detect the presence of VIM, establish a CRE proficiency testing program for state health laboratories, and storage and transport of CRE isolates. | \$ 190,387   | CDD       |
| Wisconsin Department of Health Services    | 140651 - PO TBD       | 8/1/2016   | 7/31/2017 | ELC Project K7: HAI - Antimicrobial Resistance Regional Lab Network | Testing for carbapenemase production among Klebsiella spp., Enterobacter spp, and E coli and PFGE testing among carbapenemase producing isolates. Active surveillance for CRE colonization from collected specimens; validation and implementation of PCR assay to detect VIM.                                                                                         | \$ 1,373,718 | CDD       |
| Wisconsin Department of Health Services    | 128560 - PO 9011      | 8/1/2016   | 7/31/2017 | ELC Project M1: West Nile Virus and Other Arboviral Diseases        | Zika testing, reagents for Zika, Chikungunya, Dengue, West Nile and others, as well as purchase of one ABI 7500 Fast DX.                                                                                                                                                                                                                                               | \$ 300,000   | CDD       |
| Wisconsin Department of Health Services    | 122072 - PO TBD       | 8/1/2016   | 7/31/2017 | ELC Project O: Parasitic Diseases                                   | Babesia reagents, shipping to CDC and travel to Intestinal and Blood Parasite Workshops sponsored by CDC and NLTN.                                                                                                                                                                                                                                                     | \$ 7,000     | CDD       |
| Wisconsin Department of Health Services    | 125325 - PO 8095      | 8/1/2016   | 7/31/2017 | ELC Project P1: Influenza Surveillance and Diagnostic Testing       | Testing, training, surveillance and reporting, including teleconferences, website postings and statewide Virology Conference.                                                                                                                                                                                                                                          | \$ 44,263    | CDD       |

New/Renewed Contracts since August 1, 2016

| CUSTOMER                                  | CONTRACT NAME       | START DATE | END DATE  | ACCOUNT NAME                                              | SCOPE OF WORK                                                                                                                                                                                                 | AWARD AMOUNT | WSLH DEPT |
|-------------------------------------------|---------------------|------------|-----------|-----------------------------------------------------------|---------------------------------------------------------------------------------------------------------------------------------------------------------------------------------------------------------------|--------------|-----------|
| Wisconsin Department of Health Services   | 108958 - PO TBD     | 8/1/2016   | 7/31/2017 | ELC Project Q1: Non Influenza Respiratory Diseases        | Diagnostics and surveillance of non influenza respiratory disease with reporting to participating clinical partners and CDC.                                                                                  | \$ 58,249    | CDD       |
| Wisconsin Department of Health Services   | 125326 - PO 7701    | 8/1/2016   | 7/31/2017 | ELC Project R: Vaccine Preventible Disease - Surveillance | Testing for N. meningitides and H. influenza and antibiotic susceptibility; archiving and shipping to CDC for national surveillance.                                                                          | \$ 23,023    | CDD       |
| Wisconsin Department of Health Services   | 122071              | 8/1/2016   | 7/31/2017 | ELC Project W2 - Rabies: Laboratory Capacity              | Travel/Training to NLTN/APHL Rabies Workshop.                                                                                                                                                                 | \$ 2,750     | CDD       |
| Wisconsin Department of Health Services   | 125323 - PO TBD     | 8/1/2016   | 7/31/2017 | ELC Project Z: Waterborne                                 | Cryptosporidium testing, progress reports and monthly CDC CryptoNet call as well as purchase of Savant FastPrep FP120 Cell Disruptor.                                                                         | \$ 7,500     | CDD       |
| Wisconsin Department of Health Services   | 125324 - PO 8094    | 7/1/2016   | 6/30/2017 | CSTE Influenza IISP Surveillance                          | Provide specimen collection supplies to clinics, testing and subtyping for influenza A & B, and testing via Luminex NxTAG RPP.                                                                                | \$ 33,695    | CDD       |
| Wisconsin Department of Health Services   | 140650 - PO 8871    | 8/1/2016   | 7/31/2017 | Zika Infant Outcomes                                      | Provide one FTE Coordinator position plus travel to oversee infant outcomes program.                                                                                                                          | \$ 96,201    | CDD       |
| Wisconsin Department of Health Services   | CARS 33425          | 7/1/2016   | 6/30/2017 | HCET Colposcopy Services                                  | Interagency Agreement to support colposcopy services for cervical cancer screening and follow up, particularly in rural Wisconsin counties, and communities designated as Health Professional Shortage Areas. | \$ 66,800    | DPD       |
| Wisconsin Department of Health Services   | 84176 - PO TBD      | 7/1/2016   | 6/30/2017 | PHEP Biological Response                                  | Provide ongoing biological testing capabilities and capacity for identification of agents in clinical and food specimens and the ability to respond to emergencies.                                           | \$ 704,176   | CDD       |
| Wisconsin Department of Health Services   | RLB XXX - PO TBD    | 4/1/2016   | 6/30/2017 | PHEP BP3 Ebola Lab Equipment                              | Purchase of two Quantstudio Dx 96W Fast instruments per CDC NOA 3U90TP000561-03S2.                                                                                                                            | \$ 134,000   | CDD       |
| Association of Public Health Laboratories | 56400-200-801-17-08 | 7/1/2016   | 6/30/2017 | Calicinet                                                 | Renewal of agreement to submit norovirus specimens to CDC on regular basis.                                                                                                                                   | \$ 20,000    | CDD       |
| Association of Public Health Laboratories | 56400-200-924-17-04 | 10/1/2016  | 6/30/2017 | National Influenza Surveillance Reference Center          | Test for CDC neuraminidase inhibition assay panel of reference viruses; weekly virus isolation report, neuraminidase assay reports, virus isolation testing summaries, and WGS surveillance project.          | \$ 870,000   | CDD       |
| Association of Public Health Laboratories | 56400-200-904-17-05 | 10/1/2016  | 3/31/2017 | Transfer of ELITE Program from CDC                        | Distribution and resulting of legionella challenge panels to ELITE laboratories per CDC.                                                                                                                      | \$ 40,000    | LID       |
| Illinois Department of Public Health      | 13174               | 7/1/2016   | 6/30/2018 | Contract 755000023E                                       | Proficiency Testing for Springfield, Carbondale and Chicago. Maximum of \$15K/year for three years.                                                                                                           | \$ 15,000    | LID       |

| New/Renewed Contracts since August 1, 2016    |                  |            |           |                                          |                                                                                                                                                                                            |              |           |
|-----------------------------------------------|------------------|------------|-----------|------------------------------------------|--------------------------------------------------------------------------------------------------------------------------------------------------------------------------------------------|--------------|-----------|
| CUSTOMER                                      | CONTRACT NAME    | START DATE | END DATE  | ACCOUNT NAME                             | SCOPE OF WORK                                                                                                                                                                              | AWARD AMOUNT | WSLH DEPT |
| Wisconsin Department of Natural Resources     | 37000-0000002528 | 7/1/2016   | 6/30/2017 | AS014                                    | Aquatic Invasive Species (Planning Grant) - organic and inorganic chemistry                                                                                                                | \$ 10,904    | EHD       |
| Wisconsin Department of Natural Resources     | 37000-0000002529 | 7/1/2016   | 6/30/2017 | CF019                                    | Lake Protection Grant Lab Support - inorganic chemistry                                                                                                                                    | \$ 41,614    | EHD       |
| Wisconsin Department of Natural Resources     | 37000-0000002527 | 7/1/2016   | 6/30/2017 | LM023                                    | Lake Planning Grant Laboratory - inorganic chemistry                                                                                                                                       | \$ 28,722    | EHD       |
| Wisconsin Department of Natural Resources     | 37000-0000002547 | 7/1/2016   | 6/30/2017 | WA064                                    | Hazardous Waste Lab Services - inorganic and organic chemistry                                                                                                                             | \$ 9,148     | EHD       |
| Wisconsin Department of Natural Resources     | 37000-0000002546 | 7/1/2016   | 6/30/2017 | WA065                                    | Flambeau Mine Lab Support                                                                                                                                                                  | \$ 5,284     | EHD       |
| Wisconsin Department of Natural Resources     | 37000-0000002575 | 7/1/2016   | 6/30/2017 | MR050                                    | Mississippi River Sediment Traps -inorganic and organic chemistry                                                                                                                          | \$ 3,512     | EHD       |
| Wisconsin Department of Natural Resources     | 37000-0000002918 | 4/1/2017   | 6/30/2017 | GL048                                    | Plum Creek Sediment - inorganic and trace elements                                                                                                                                         | \$ 30,800    | EHD       |
| Wisconsin Department of Natural Resources     | 37000-0000002878 | 7/1/2016   | 6/30/2017 | NP024                                    | Non-Point Evaluation Monitoring - inorganic, organic and water micro                                                                                                                       | \$ 45,900    | EHD       |
| Wisconsin Department of Natural Resources     | 37000-0000002981 | 10/1/2016  | 6/30/2017 | SS096                                    | Elwood Sediment Core - radiochemistry                                                                                                                                                      | \$ 1,170     | EHD       |
| Wisconsin Department of Health Services       | 87748 - PO TBD   | 7/1/2016   | 6/30/2017 | PHEP Chemical Response                   | Provide ongoing chemical testing capabilities and capacity for identification of environmental agents, including radiologic, and emergency response.                                       | \$ 108,795   | EHD       |
| Wisconsin Department of Health Services       | 87871 - PO TBD   | 7/1/2016   | 6/30/2017 | PHEP Level 1 Lab BP5                     | Provide chemical testing capabilities and capacity as a Level One surge laboratory in the CDC LRN-C. Respond and provide training and consultation to clinical laboratories and hospitals. | \$1,445,235  | EHD       |
| Wisconsin Department of Health Services       | RBL XXX - PO TBD | 7/1/2016   | 6/30/2017 | PHEP BP5 Laboratory Equipment Supplement | Purchase instrumentation to enhance the ability to meet LRN-C Level 1 Chemical Threat Laboratory obligations: an ICPMS with HPLC, additional HPLC, and a tandem mass spec.                 | \$ 488,908   | EHD       |
| US Dept of the Interior/National Park Service | P13PX03438/00003 | 9/20/2016  | 9/19/2017 | 89083 - USDOI GLKN MABO                  | Great Lakes Inventory and Monitoring - analysis of eagle eggs - organic chemistry                                                                                                          | \$ 21,000    | EHD       |
| The Nature Conservancy                        | 100116-2017008   | 10/1/2016  | 9/30/2017 | TNC Sheboygan                            | Testing for Wisconsin Buffer Initiative sites, Otter Creek in Plymouth and Fisher Creek in Howards Grove, for suspended sediment, total phosphorus and dissolved phosphorus.               | \$ 15,700    | EHD       |

Wisconsin State Laboratory of Hygiene  
Board of Directors Meeting  
December 13, 2016

**BUSINESS ITEMS**

**Item 10. DIRECTOR'S REPORT**

- A. Public or Environmental Health Incidents of Educational Interest**
- B. Water Systems Report**
- C. Next Board Meeting: Tuesday, March 21<sup>st</sup>, 2017**
- D. CDD Move**

**Wisconsin State Laboratory of Hygiene  
Board of Directors Meeting  
December 13, 2016**

**Report to the Wisconsin State Laboratory of Hygiene Board**

**Representative Public or Environmental Health Incidents of Educational Interest  
For the Period July 29 – December 1, 2016**

| Approx. Date                   | Agent or Event Name           | Description                                                                                                                                                                                                                                                                                                                                                                                                                                                                                                                                                                    | Current Status |
|--------------------------------|-------------------------------|--------------------------------------------------------------------------------------------------------------------------------------------------------------------------------------------------------------------------------------------------------------------------------------------------------------------------------------------------------------------------------------------------------------------------------------------------------------------------------------------------------------------------------------------------------------------------------|----------------|
| <b>OUTBREAKS and INCIDENTS</b> |                               |                                                                                                                                                                                                                                                                                                                                                                                                                                                                                                                                                                                |                |
| August 2016                    | Cyclohexylsarin (nerve agent) | The WSLH Chemical Emergency Response Unit participated in a Centers for Disease Control and Prevention (CDC) Level 1 chemical response laboratories exercise. WSLH scientists tested 500 urine specimens for a metabolite of the nerve agent Cyclohexylsarin, with short notice and ASAP turnaround. Testing was completed in less than 24 hours, and results compared favorably to the other chemical response labs and to nominal target values.                                                                                                                             | Complete       |
| August 2016                    | Hazmat response incident      | Several illnesses were reported at the Post Office in Jackson, WI. The Milwaukee Hazmat team collected vapor specimens for WSLH analysis. The presence of high concentrations of several volatile compounds was confirmed.                                                                                                                                                                                                                                                                                                                                                     | Complete       |
| October 2016                   | Meningitis                    | Three UW-Madison students were confirmed to have meningococcal disease in October. WSLH Communicable Disease Division (WSLH CDD) scientists used CDC vaccine-preventable disease testing protocols to both identify and serogroup the bacteria. Results showed that the bacteria were meningococcal disease serogroup B, which is not covered in the commonly-administered vaccine. UW-Madison's University Health Services, with support from the WI Division of Public Health (DPH), conducted a large-scale vaccination campaign to immunize students against the bacteria. | Complete       |
| November 2016                  | <i>Salmonella</i> Heidelberg  | WSLH CDD scientists are assisting DPH and CDD epidemiologists in the investigation of multidrug-resistant (MDR) <i>Salmonella</i> Heidelberg illnesses in 8 states. The majority of the 21 ill                                                                                                                                                                                                                                                                                                                                                                                 | Ongoing        |

|                                   |                                                                          | <p>people are from Wisconsin and report direct or indirect exposure to recently purchased dairy bull calves.</p> <p>Other agencies also participating in the investigation are the Wisconsin Veterinary Diagnostic Laboratory (WVDL) and Wisconsin Department of Agriculture, Trade and Consumer Protection (DATCP), United States Department of Agriculture (USDA), and National Veterinary Services Laboratories.</p> |          |
|-----------------------------------|--------------------------------------------------------------------------|-------------------------------------------------------------------------------------------------------------------------------------------------------------------------------------------------------------------------------------------------------------------------------------------------------------------------------------------------------------------------------------------------------------------------|----------|
| <b>RECENT EVENTS and FINDINGS</b> |                                                                          |                                                                                                                                                                                                                                                                                                                                                                                                                         |          |
| May 2016                          | UW College of Agriculture and Life Sciences Award                        | WSLH Environmental Microbiology Director Dr. Sharon C. Long received the 2016 UW College of Agriculture and Life Sciences Equity and Diversity Award.                                                                                                                                                                                                                                                                   | Complete |
| June 19-22, 2016                  | American Water Works Association (AWWA) Annual Conference and Exposition | Dr. Long, WSLH Research Assistant Brandon Moss and WSLH Water Microbiologist Jesse Dowding had a paper published – “Large-Volume Sample Approach to Meet the Source Assessment Requirements Under the RTCR” - in the proceedings of the AWWA Annual Conference and Exposition held in Chicago.                                                                                                                          | Complete |
| July 2016                         | CDC Antibiotic Resistance (AR) Regional Laboratory Network               | <p>CDC designated WSLH CDD an Antibiotic Resistance (AR) Regional Lab for the Midwest Region.</p> <p>WSLH CDD is just 1 of 7 AR Regional Labs nationwide and will provide testing for Wisconsin, Michigan, Illinois, Indiana, Ohio and Kentucky.</p> <p>WSLH CDD is also a CDC Reference Center for influenza surveillance, vaccine-preventable diseases, and foodborne/enteric diseases.</p>                           | Ongoing  |
| July 29, 2016                     | Northwest Alcohol Conference, Boise, ID                                  | WSLH Forensic Toxicology Section Director Amy Miles was a keynote speaker for the Northwest Alcohol Conference. Topics included current drug trends with a focus on novel psychoactive substances.                                                                                                                                                                                                                      | Complete |
| August 13-15, 2016                | Annual Drug Recognition Expert Conference,                               | WSLH Forensic Toxicologists Stephanie Weber and Kimberle Glowacki each presented at the Annual Drug Recognition Expert Conference, which had ~1000 attendees. Stephanie covered                                                                                                                                                                                                                                         | Complete |

|                            |                                                                                              |                                                                                                                                                                                                                                                                                                                                                                                                                                                                                                                                                                                                                                                      |                |
|----------------------------|----------------------------------------------------------------------------------------------|------------------------------------------------------------------------------------------------------------------------------------------------------------------------------------------------------------------------------------------------------------------------------------------------------------------------------------------------------------------------------------------------------------------------------------------------------------------------------------------------------------------------------------------------------------------------------------------------------------------------------------------------------|----------------|
|                            | Denver, CO                                                                                   | heroin and other opioids such as the current fentanyl analogues, while Kimberle spoke on the synthetic cannabinoids.                                                                                                                                                                                                                                                                                                                                                                                                                                                                                                                                 |                |
| August 24, 2016            | Governor's Highway Safety Conference, Appleton, WI                                           | WSLH Forensic Toxicologist Lorraine Edwards presented at the Governor's Highway Safety Conference on the Dane County Roadside Oral Fluid Project and the WSLH's role in the process.                                                                                                                                                                                                                                                                                                                                                                                                                                                                 | Complete       |
| September 2016             | <i>Journal of Environmental Quality</i> article published                                    | Dr. Sharon Long and colleagues from the UW Department of Biological Systems Engineering published the article "Subsurface Transport of <i>Cryptosporidium</i> in Soils of Wisconsin's Carbonate Aquifer Region" in the <i>Journal of Environmental Quality</i> 45(5): 1607-1615.                                                                                                                                                                                                                                                                                                                                                                     | September 2016 |
| September 7, 2016          | La Crosse Health Department - CDC Well Water Grant Training and Technical Assistance Meeting | WSLH Metals and Environmental Inorganics Supervisor DeWayne Kennedy-Parker and Trace Elements Clean Lab Supervisor Dr. Patrick Gorski gave presentations regarding metals analyses in drinking water at the La Crosse County Health Department during their CDC Well Water Grant Training and Technical Assistance Meeting.<br><br>The La Crosse Health Department received a large multi-year environmental health grant from CDC.                                                                                                                                                                                                                  | Complete       |
| September 8, 2016          | WI Annual Vehicular Homicide Conference, Steven's Point, WI                                  | Amy Miles presented at the WI Annual Vehicular Homicide Conference regarding current alcohol and drug trends in motor vehicle crashes and deaths in WI.                                                                                                                                                                                                                                                                                                                                                                                                                                                                                              | Complete       |
| September 8,9,and 13, 2016 | Wisconsin Clinical Laboratory Network 2016 Regional Meetings                                 | CDD held their annual Regional Meetings at 3 locations in WI - Rice Lake, Kimberly, and Wisconsin Dells. Nearly 200 clinical laboratorians, infection preventionists and local public health nurses attended the meetings to learn more about Zika virus, the WI Elizabethkingia outbreak, case studies, as well as packaging and shipping. WI labs are focused on improving the culture of biosafety in their facilities and the routine performance of risk assessment in laboratories is critical to this goal. A discussion of the results of the risk assessment tool that laboratories completed and reported to the WSLH rounded out the day. | Complete       |
| September 12,              | Intoximeter Users                                                                            | WSLH Forensic Toxicologists Katie Smith and                                                                                                                                                                                                                                                                                                                                                                                                                                                                                                                                                                                                          | Complete       |

|                    |                                                                      |                                                                                                                                                                                                                                                                                                                                                                                                                                                                                                                         |          |
|--------------------|----------------------------------------------------------------------|-------------------------------------------------------------------------------------------------------------------------------------------------------------------------------------------------------------------------------------------------------------------------------------------------------------------------------------------------------------------------------------------------------------------------------------------------------------------------------------------------------------------------|----------|
| 2016               | Group Meeting, Green Bay, WI                                         | Ted Savage presented the WSLH's data on the Dane County Roadside Oral Fluid Project at the Intoximeter Users Group Meeting.                                                                                                                                                                                                                                                                                                                                                                                             |          |
| September 20, 2016 | Water & Sanitation in Developing Countries lecture                   | Dr. Patrick Gorski, along with another WI Water for the World volunteer, gave a guest lecture to UW Department of Pediatrics residents on "Water & Sanitation in Developing Countries."<br><br>The lecture focused on work Dr. Gorski and other WI Water for the World volunteers performed to build infrastructure necessary to provide an easily-accessible source of clean dependable drinking water and proper drainage for used waste water for a rural village in Guatemala.                                      | Complete |
| September 28, 2016 | WCLN Webinar - Influenza and Other Respiratory Viruses Update – 2016 | The September WI Clinical Laboratory Network (WCLN) webinar featured WSLH Interim Director and CDD Director Dr. Pete Shult and WSLH Virology Surveillance and Team Leader Erik Reisdorf providing a review of the 2015 – 2016 respiratory virus season and highlighting surveillance strategies for 2016-2017. Additional topics discussed included updates on seasonal influenza, influenza variant viruses, severe acute respiratory illness (SARI) surveillance, current and new diagnostic technologies and trends. | Complete |
| September 28, 2016 | Meeting with US Postal Inspectors                                    | WSLH Chemical Emergency Response and CDD staff hosted Wisconsin's Postal Inspectors. The USPIS serves as the law enforcement branch of the Postal Service, and works with the WSLH for "white powder" and other unknown substance incidents in mailed items.                                                                                                                                                                                                                                                            | Complete |
| October 3-4, 2016  | Midwest Association of Forensic Sciences, Branson, MO                | WSLH Forensic Toxicologist Kayla Neuman presented an all day workshop on the effects of synthetic cannabinoids and human performance at the Midwest Association of Forensic Sciences.                                                                                                                                                                                                                                                                                                                                   | Complete |
| October 5-6, 2016  | Human Resources Conference Exhibit                                   | Rebecca Adams represented the WSLH's Occupational Safety and Health Division and Bureau of Labor Statistics/Occupational Safety and Health Statistics Unit at the annual WI Society for Human Resource Management conference (SHRM). There were more than 1,000 attendees, and many visited the WSLH booth and spun the <i>Wheel of Safety</i> to learn more about work safety, injury prevention, and tracking injuries. Many                                                                                          | Complete |



|                     |                                                                           |                                                                                                                                                                                                                                                                                                                                                                                                                                                                                                                                                                                                                      |          |
|---------------------|---------------------------------------------------------------------------|----------------------------------------------------------------------------------------------------------------------------------------------------------------------------------------------------------------------------------------------------------------------------------------------------------------------------------------------------------------------------------------------------------------------------------------------------------------------------------------------------------------------------------------------------------------------------------------------------------------------|----------|
|                     |                                                                           | human resources personnel double as safety managers, so the attendees were very receptive to information and resources provided to help them perform their job duties.                                                                                                                                                                                                                                                                                                                                                                                                                                               |          |
| October 6, 2016     | Problem Solving Courts, Bloomington, IL                                   | Kayla Neuman presented on current drug trends and their effects on driving and human performance.                                                                                                                                                                                                                                                                                                                                                                                                                                                                                                                    | Complete |
| October 6, 2016     | New Public Health Employee Orientation                                    | WSLH Public Affairs Manager Jan Klawitter presented an overview of the WSLH to new local and state public health employees as part of DPH's semi-annual new public health employee orientation.                                                                                                                                                                                                                                                                                                                                                                                                                      | Complete |
| October 10, 2016    | CDD Moved to Ag Drive                                                     | CDD moved to their new laboratory space at Ag Drive. It was a move that was years in the making, and plenty of preparation made things go pretty smoothly. CDD staged the move so there would be no testing down time.                                                                                                                                                                                                                                                                                                                                                                                               | Complete |
| October 11, 2016    | Occupational Surveillance Advisory Group                                  | Steve Strelbel, George Gruetzmacher, and Rebecca Adams represented the WSLH Occupational Safety and Health Division at a quarterly Occupational Surveillance Advisory Group, headed by WI Department of Health Services. Rebecca Adams presented an overview of work injuries and fatalities in Wisconsin. The group of ~20-25 has representatives from UW-Madison, UW-Whitewater, WI Division of Public Health, OSHA, Worker's Compensation, DATCP, National Farm Medicine Center, Asbestos/Lead program, Childhood Lead Poisoning Prevention Program, Environmental and Occupational Health Epidemiology, and CDC. | Complete |
| October 17, 2016    | Society of Forensic Toxicologists (SOFT), Dallas, TX                      | Amy Miles and WSLH Forensic Toxicology Section Supervisor Bill Johnson co-chaired a one day workshop on Opioids and Drug Impaired Driving at the Society of Forensic Toxicologists annual meeting.                                                                                                                                                                                                                                                                                                                                                                                                                   | Complete |
| October 17-20, 2016 | Association of State Drinking Water Administrators 2016 Annual Conference | Dr. Sharon Long presented "A Find and Fix Approach to Meet the Assessment Requirements Under the RTCR" at the Association of State Drinking Water Administrators 2016 Annual Conference held in Milwaukee, WI.                                                                                                                                                                                                                                                                                                                                                                                                       | Complete |

|                            |                                                                                                                                       |                                                                                                                                                                                                                                                                                                                                                                                                                                                                                                                                                                                                                                                                                                                                                                                                                                                                            |                 |
|----------------------------|---------------------------------------------------------------------------------------------------------------------------------------|----------------------------------------------------------------------------------------------------------------------------------------------------------------------------------------------------------------------------------------------------------------------------------------------------------------------------------------------------------------------------------------------------------------------------------------------------------------------------------------------------------------------------------------------------------------------------------------------------------------------------------------------------------------------------------------------------------------------------------------------------------------------------------------------------------------------------------------------------------------------------|-----------------|
| <p>October 19, 2016</p>    | <p><i>Biological Trace Element Research</i> publication - Tracing the isotopic signature of lead – Is it bullets, water or paint?</p> | <p>Tracing the isotopic signature of lead (Pb) in both an adult who had bullet fragments embedded in his leg for 10 years and his young child who also had elevated blood lead levels (BLL) is the subject of a recent paper in <i>Biological Trace Element Research</i>.</p> <p>The paper is the first resulting from isotopic analyses performed on the Multicollector Inductively Coupled Plasma Mass Spectrometer (MC-ICPMS) in the WSLH Trace Elements Clean Lab. The case is novel in that the MC-ICPMS was used for testing both clinical and environmental samples. The technology has been used for environmental testing for several years, but using it to test clinical specimens is still quite rare.</p> <p>The article highlights the power of MC-ICPMS technology to determine isotopic signatures for environmental source tracking in public health.</p> | <p>Complete</p> |
| <p>October 20-21, 2016</p> | <p>WI Science Festival</p>                                                                                                            | <p>WSLH Cytology and Cytogenetics sections and students from the UW Cytotechnology Certificate Program hosted exploration stations at the 2016 Wisconsin Science Festival.</p> <p>This was the 15<sup>th</sup> anniversary for the festival, which holds events not only in Madison but across the state. This year there were more than 200 events in 35 cities.</p>                                                                                                                                                                                                                                                                                                                                                                                                                                                                                                      | <p>Complete</p> |
| <p>October 21, 2016</p>    | <p>Special Prosecutor Education and Training, Elkhart Lake, WI</p>                                                                    | <p>Stephanie Weber and Kayla Neuman presented to prosecutors on general topics from WSLH Forensic Toxicology, including heroin and other current drug trends. Ted Savage gave a separate presentation on the WSLH data from the Dane County Roadside Oral Fluid Project.</p>                                                                                                                                                                                                                                                                                                                                                                                                                                                                                                                                                                                               | <p>Complete</p> |
| <p>October 24-26, 2016</p> | <p>WI Medical Examiner Association Conference, Neenah, WI</p>                                                                         | <p>Both WSLH Forensic Toxicology Section and Bureau of Labor Statistics/Occupational Safety and Health Statistics Unit staff presented at the WI Medical Examiner Association Conference.</p> <p>BLS/OSHS - Rebecca Adams co-presented with Brittany Grogan from the WI Violent Death Reporting Program about work-related suicides and homicides. They gave an overview about suicides and homicides in the US and Wisconsin, then presented data from the Census of Fatal Occupational Injuries and the Violent Death</p>                                                                                                                                                                                                                                                                                                                                                | <p>Complete</p> |

|                    |                                                                 |                                                                                                                                                                                                                                                                                                                                                                                                                                                                                                                                                                                                                                                           |          |
|--------------------|-----------------------------------------------------------------|-----------------------------------------------------------------------------------------------------------------------------------------------------------------------------------------------------------------------------------------------------------------------------------------------------------------------------------------------------------------------------------------------------------------------------------------------------------------------------------------------------------------------------------------------------------------------------------------------------------------------------------------------------------|----------|
|                    |                                                                 | <p>Reporting System to examine how these data can be used to identify trends and prevent violent deaths at work.</p> <p>Forensic Toxicology - Kayla Neuman presented on heroin and novel psychoactive substance and how they relate to fatal overdoses.</p>                                                                                                                                                                                                                                                                                                                                                                                               |          |
| November 2016      | <i>Agricultural &amp; Environmental Letters</i>                 | Dr. Sharon Long and WSLH Water Microbiologist Jeremy Olstadt along with UW Biological Systems Engineering department colleagues had a paper – “ <i>Cryptosporidium</i> Soil Extraction by Filtration/IMS/FA Compatible with USEPA Method 1623.1” – accepted for publication in <i>Agricultural &amp; Environmental Letters</i> .                                                                                                                                                                                                                                                                                                                          | Complete |
| November 2, 2016   | Madison College (MATC) MLT students, Madison, WI                | Bill Johnson gave an overview presentation on the WSLH and the role Forensic Toxicology plays in a public health lab.                                                                                                                                                                                                                                                                                                                                                                                                                                                                                                                                     | Complete |
| November 3-4, 2016 | National Safety Council (NSC), Philadelphia, PA                 | Amy Miles attended a meeting of the NSC to update the recommended guidelines for scope of testing and cut-off concentrations for forensic laboratories involved in drug impaired driving testing. This consensus meeting will give rise to a peer reviewed journal article which will be disseminated during 2017 in various platforms such as workshops at conferences and training guides for laboratories across the country.                                                                                                                                                                                                                          | Complete |
| November 3, 2016   | 2015 Survey of Occupational Injuries and Illnesses data release | <p>The WSLH Bureau of Labor Statistics/Occupational Safety and Health Statistics Unit released data collected as part of their 2015 Survey of Occupational Injuries and Illnesses in Wisconsin.</p> <p>Data showed there were 78,800 total injuries and illnesses reported by Wisconsin employers in 2015, which occurred at a rate of 3.6 cases per 100 equivalent full-time workers. This is a decline from 4.0 in 2013 and 2014. Nationwide, the total injury and illness case rate declined from 3.4 to 3.3 per 100 full-time workers.</p> <p>A news release was sent statewide and web updates and infographics were made to highlight the data.</p> | Complete |
| November 4,        | WCLN Annual                                                     | The WCLN relies on the support and guidance of a                                                                                                                                                                                                                                                                                                                                                                                                                                                                                                                                                                                                          | Complete |

|                          |                                                                     |                                                                                                                                                                                                                                                                                                                                                                                                                                                                                                                                                                                                                                                                                                                                                                                                                                                                |          |
|--------------------------|---------------------------------------------------------------------|----------------------------------------------------------------------------------------------------------------------------------------------------------------------------------------------------------------------------------------------------------------------------------------------------------------------------------------------------------------------------------------------------------------------------------------------------------------------------------------------------------------------------------------------------------------------------------------------------------------------------------------------------------------------------------------------------------------------------------------------------------------------------------------------------------------------------------------------------------------|----------|
| 2016                     | LabTAG Meeting                                                      | Laboratory Technical Advisory Committee (LabTAG), comprised of representatives from the clinical laboratories, to plan WCLN educational activities. Once a year all gather for an in-person meeting to review and analyze the past year's events and to plan for the coming year. We also discuss issues that laboratories are facing. A major topic of this year's meeting was the training of future laboratory professionals. In order to help educators better understand the challenges laboratories have in providing student internships, we invited educators from WI laboratory professional educational programs to join us for a part of the meeting to see if we can find ways to work with the educational programs to develop training that will produce students who are better matched to the needs of the clinical microbiology laboratories. |          |
| November 9, 2016         | WCLN Webinar – Benefits of Microbial Burden Management              | The November WCLN webinar featured Dr. Michael G. Schmidt, professor and vice chair of the Medical University of South Carolina's Department of Microbiology and Immunology, discussing methods hospitals can use to lower healthcare-associated infection rates, including the use of antimicrobial copper touch surfaces.                                                                                                                                                                                                                                                                                                                                                                                                                                                                                                                                    | Complete |
| November 10, 2016        | 2015 BLS Census complete                                            | The WSLH Bureau of Labor Statistics/Occupational Safety and Health Statistics Unit completed their year-long Census of Fatal Occupational Injuries. Data will be released Dec 19 <sup>th</sup> .                                                                                                                                                                                                                                                                                                                                                                                                                                                                                                                                                                                                                                                               | Complete |
| November 15 and 17, 2016 | Madison College tour of EHD and OSHD                                | The WSLH hosted our semi-annual tours of the environmental health and occupational safety and health labs for Madison College's Introduction to Environmental Studies class.<br><br>Four sections of the class toured the labs on Tuesday, Nov. 15th and Thursday, Nov. 17th.<br><br>The WSLH has hosted these tours for a few years now and the instructors and students enjoy being able to see the practical applications of what they study in the classroom.                                                                                                                                                                                                                                                                                                                                                                                              | Complete |
| November 16-17, 2016     | Wisconsin Drinking Water and Groundwater 2016 Statewide Meeting and | Dr. Sharon Long, Jesse Dowding and D. Sefton's poster "Large Volume Sample – Hollow Fiber Ultrafiltration (HFUF)" received the third-place poster award at the Wisconsin Drinking Water and Groundwater 2016 Statewide Meeting and                                                                                                                                                                                                                                                                                                                                                                                                                                                                                                                                                                                                                             | Complete |

|                   |                                                              |                                                                                                                                                                                                                                                                                                                                                                                                                                                                                                                                                                                                                                      |          |
|-------------------|--------------------------------------------------------------|--------------------------------------------------------------------------------------------------------------------------------------------------------------------------------------------------------------------------------------------------------------------------------------------------------------------------------------------------------------------------------------------------------------------------------------------------------------------------------------------------------------------------------------------------------------------------------------------------------------------------------------|----------|
|                   | Training                                                     | Training. Dr. Long also presented on “Large Volume Groundwater Sample Approach to meet Source Assessment Requirements Under the RTCR.”                                                                                                                                                                                                                                                                                                                                                                                                                                                                                               |          |
| November 17, 2016 | WMLN 2016 Annual Conference                                  | The Wisconsin Mycobacteria Laboratory Network held its annual meeting at the Crowne Plaza in Madison on 11/17/16. Clinical and public health laboratorians joined local and state public health personnel to discuss the diagnosis and prevention of mycobacterial disease. A guest speaker from Mayo clinic, Dr. Temesgen, provided the key note presentation on the treatment and care of patients co-infected with <i>Mycobacterium tuberculosis</i> (MTB) and HIV. Other topics of discussion were the use of newer technologies in diagnosis and patient management, the state of MTB in WI, and the ever popular case studies. | Complete |
| December 1, 2016  | Forensic Toxicology Testimony – Canadian Parliament (Senate) | At the invitation of the Canadian Senate, Amy Miles provided testimony to the Legal and Constitutional Affairs Committee in regard to a bill they are considering about allowing roadside oral fluid testing for drug-impaired driving. Amy’s testimony included information from the WSLH’s experience with the Dane County Roadside Oral Fluid Project, as well as her knowledge of the use of these devices in the U.S and internationally via her position as chair of the SOFT/AAFS Drugs and Driving Committee.                                                                                                                | Complete |

Wisconsin State Laboratory of Hygiene  
Board of Directors Meeting  
December 13, 2016

**Report to the  
Wisconsin State Laboratory of Hygiene Board  
Water Systems Tests by the WSLH  
For the period August 1, 2016 through October 31, 2016**

|                                                                                       |        |
|---------------------------------------------------------------------------------------|--------|
| Number of systems on a boil water notice                                              | 1      |
| Number of water systems tested                                                        | 4012   |
| Percent of systems on a boil water notice                                             | <0.01% |
| Number of boil water notices for <u>municipal community water</u> systems.            | 0      |
| Number of boil water notices for <u>other than a municipal community water</u> system | 0      |
| Number of boil water notices for <u>non-transient, non-community</u> water systems.   | 0      |
| Number of boil water notices for <u>transient water systems</u> .                     | 1      |

|             | # of systems tested by SLH |    |    |    | # of Boil Water Notices |    |    |    |   |
|-------------|----------------------------|----|----|----|-------------------------|----|----|----|---|
|             | MC                         | OC | NN | TN | MC                      | OC | NN | TN |   |
| Adams       |                            | 4  | 2  | 0  | 4                       | 0  | 0  | 0  | 0 |
| Ashland     |                            | 3  | 0  | 1  | 2                       | 0  | 0  | 0  | 0 |
| Barron      |                            | 2  | 2  | 0  | 1                       | 0  | 0  | 0  | 0 |
| Bayfield    |                            | 1  | 0  | 0  | 0                       | 0  | 0  | 0  | 0 |
| Brown       |                            | 8  | 1  | 1  | 2                       | 0  | 0  | 0  | 0 |
| Buffalo     |                            | 3  | 0  | 0  | 4                       | 0  | 0  | 0  | 0 |
| Burnett     |                            | 0  | 1  | 0  | 29                      | 0  | 0  | 0  | 0 |
| Calumet     |                            | 6  | 2  | 0  | 3                       | 0  | 0  | 0  | 0 |
| Chippewa    |                            | 1  | 3  | 1  | 36                      | 0  | 0  | 0  | 0 |
| Clark       |                            | 6  | 0  | 0  | 2                       | 0  | 0  | 0  | 0 |
| Columbia    |                            | 10 | 7  | 6  | 16                      | 0  | 0  | 0  | 0 |
| Crawford    |                            | 5  | 1  | 0  | 2                       | 0  | 0  | 0  | 0 |
| Dane        |                            | 32 | 14 | 7  | 47                      | 0  | 0  | 0  | 0 |
| Dodge       |                            | 16 | 4  | 7  | 5                       | 0  | 0  | 0  | 0 |
| Door        |                            | 3  | 2  | 1  | 66                      | 0  | 0  | 0  | 0 |
| Douglas     |                            | 0  | 0  | 0  | 1                       | 0  | 0  | 0  | 0 |
| Dunn        |                            | 0  | 2  | 0  | 34                      | 0  | 0  | 0  | 0 |
| Eau Claire  |                            | 0  | 6  | 1  | 0                       | 0  | 0  | 0  | 0 |
| Florence    |                            | 1  | 0  | 0  | 4                       | 0  | 0  | 0  | 0 |
| Fond Du Lac |                            | 8  | 12 | 1  | 0                       | 0  | 0  | 0  | 0 |
| Forest      |                            | 4  | 0  | 0  | 0                       | 0  | 0  | 0  | 0 |
| Grant       |                            | 11 | 6  | 1  | 6                       | 0  | 0  | 0  | 0 |
| Green       |                            | 7  | 1  | 0  | 3                       | 0  | 0  | 0  | 0 |
| Green Lake  |                            | 5  | 1  | 0  | 3                       | 0  | 0  | 0  | 0 |
| Iowa        |                            | 5  | 2  | 2  | 4                       | 0  | 0  | 0  | 0 |
| Iron        |                            | 5  | 0  | 0  | 0                       | 0  | 0  | 0  | 0 |
| Jackson     |                            | 3  | 0  | 1  | 11                      | 0  | 0  | 0  | 0 |
| Jefferson   |                            | 5  | 2  | 7  | 8                       | 0  | 0  | 0  | 0 |
| Juneau      |                            | 8  | 4  | 0  | 10                      | 0  | 0  | 0  | 0 |
| Kenosha     |                            | 0  | 15 | 5  | 2                       | 0  | 0  | 0  | 0 |
| Kewaunee    |                            | 3  | 1  | 6  | 2                       | 0  | 0  | 0  | 0 |
| La Crosse   |                            | 0  | 1  | 3  | 1                       | 0  | 0  | 0  | 0 |
| Lafayette   |                            | 6  | 0  | 0  | 4                       | 0  | 0  | 0  | 0 |
| Langlade    |                            | 1  | 1  | 0  | 3                       | 0  | 0  | 0  | 0 |
| Lincoln     |                            | 3  | 0  | 0  | 0                       | 0  | 0  | 0  | 0 |
| Manitowoc   |                            | 5  | 3  | 6  | 2                       | 0  | 0  | 0  | 0 |
| Marathon    |                            | 3  | 1  | 1  | 0                       | 0  | 0  | 0  | 0 |
| Marinette   |                            | 6  | 0  | 2  | 9                       | 0  | 0  | 0  | 0 |
| Marquette   |                            | 1  | 3  | 0  | 8                       | 0  | 0  | 0  | 0 |
| Menominee   |                            | 0  | 0  | 0  | 0                       | 0  | 0  | 0  | 0 |
| Milwaukee   |                            | 2  | 2  | 1  | 0                       | 0  | 0  | 0  | 0 |
| Monroe      |                            | 5  | 3  | 1  | 3                       | 0  | 0  | 0  | 0 |
| Oconto      |                            | 5  | 4  | 0  | 18                      | 0  | 0  | 0  | 0 |
| Oneida      |                            | 1  | 4  | 1  | 0                       | 0  | 0  | 0  | 0 |
| Outagamie   |                            | 9  | 0  | 0  | 3                       | 0  | 0  | 0  | 0 |
| Ozaukee     |                            | 1  | 2  | 12 | 2                       | 0  | 0  | 0  | 0 |
| Pepin       |                            | 0  | 1  | 0  | 2                       | 0  | 0  | 0  | 0 |
| Pierce      |                            | 1  | 1  | 0  | 2                       | 0  | 0  | 0  | 0 |
| Polk        |                            | 1  | 0  | 0  | 11                      | 0  | 0  | 0  | 0 |
| Portage     |                            | 3  | 1  | 3  | 0                       | 0  | 0  | 0  | 0 |
| Price       |                            | 3  | 1  | 0  | 0                       | 0  | 0  | 0  | 0 |
| Racine      |                            | 0  | 5  | 8  | 3                       | 0  | 0  | 0  | 0 |
| Richland    |                            | 5  | 0  | 0  | 3                       | 0  | 0  | 0  | 0 |
| Rock        |                            | 7  | 11 | 8  | 5                       | 0  | 0  | 0  | 0 |
| Rusk        |                            | 1  | 1  | 0  | 1                       | 0  | 0  | 0  | 0 |
| Sauk        |                            | 8  | 4  | 3  | 8                       | 0  | 0  | 0  | 0 |
| Sawyer      |                            | 1  | 0  | 0  | 6                       | 0  | 0  | 0  | 0 |
| Shawano     |                            | 9  | 1  | 0  | 11                      | 0  | 0  | 0  | 0 |
| Sheboygan   |                            | 7  | 1  | 6  | 0                       | 0  | 0  | 0  | 0 |
| St. Croix   |                            | 1  | 3  | 3  | 18                      | 0  | 0  | 0  | 0 |
| Taylor      |                            | 2  | 0  | 1  | 1                       | 0  | 0  | 0  | 0 |
| Trempealeau |                            | 3  | 1  | 0  | 0                       | 0  | 0  | 0  | 0 |
| Unknown     |                            | 0  | 0  | 0  | 0                       | 0  | 0  | 0  | 0 |
| Vernon      |                            | 4  | 1  | 0  | 17                      | 0  | 0  | 0  | 0 |
| Vilas       |                            | 3  | 5  | 0  | 13                      | 0  | 0  | 0  | 0 |
| Walworth    |                            | 2  | 3  | 5  | 0                       | 0  | 0  | 0  | 0 |
| Washburn    |                            | 1  | 1  | 1  | 3                       | 0  | 0  | 0  | 0 |
| Washington  |                            | 0  | 5  | 5  | 0                       | 0  | 0  | 0  | 0 |
| Waukesha    |                            | 3  | 6  | 10 | 5                       | 0  | 0  | 0  | 0 |
| Waupaca     |                            | 6  | 2  | 0  | 0                       | 0  | 0  | 0  | 0 |
| Waushara    |                            | 4  | 1  | 0  | 6                       | 0  | 0  | 0  | 0 |
| Winnebago   |                            | 4  | 0  | 0  | 0                       | 0  | 0  | 0  | 0 |
| Wood        |                            | 4  | 4  | 5  | 0                       | 0  | 0  | 0  | 0 |

## August 2016

### Report on Public Water System Testing

MC is municipal community water system which means a water system which serves at least 15 service connections used by year round residents or regularly serves at least 25 year round resident and is owned by a county, city, village, town, town sanitary district, or utility district.

OC is other than municipal community water system which means a community water system that is not a municipal water system. Examples of other than municipal community water systems include but are not limited to those serving mobile home parks, apartments and condominiums.

NN is non-transient non-community water system which means a non-community water system that regularly serves at least 25 of the same persons over 6 months per year. Examples of non-transient non-community water systems include those serving schools, day care centers and factories.

TN is non-community transient water system which means a non-community water system that serves at least 25 people at least 60 days of the year. Examples of transient non-community water systems include those serving taverns, motels, restaurants, churches, campgrounds and parks.

|             | # of systems tested by SLH |    |    |     | # of Boil Water Notices |    |    |    |
|-------------|----------------------------|----|----|-----|-------------------------|----|----|----|
|             | MC                         | OC | NN | TN  | MC                      | OC | NN | TN |
| Adams       | 3                          | 2  | 0  | 2   | 0                       | 0  | 0  | 0  |
| Ashland     | 3                          | 0  | 0  | 0   | 0                       | 0  | 0  | 0  |
| Barron      | 2                          | 4  | 3  | 7   | 0                       | 0  | 0  | 0  |
| Bayfield    | 1                          | 0  | 0  | 0   | 0                       | 0  | 0  | 0  |
| Brown       | 8                          | 1  | 2  | 24  | 0                       | 0  | 0  | 0  |
| Buffalo     | 3                          | 0  | 1  | 0   | 0                       | 0  | 0  | 0  |
| Burnett     | 0                          | 1  | 1  | 68  | 0                       | 0  | 0  | 0  |
| Calumet     | 6                          | 2  | 3  | 6   | 0                       | 0  | 0  | 0  |
| Chippewa    | 1                          | 3  | 1  | 15  | 0                       | 0  | 0  | 0  |
| Clark       | 6                          | 1  | 4  | 13  | 0                       | 0  | 0  | 0  |
| Columbia    | 10                         | 7  | 2  | 18  | 0                       | 0  | 0  | 0  |
| Crawford    | 4                          | 1  | 0  | 7   | 0                       | 0  | 0  | 0  |
| Dane        | 32                         | 14 | 13 | 55  | 0                       | 0  | 0  | 0  |
| Dodge       | 16                         | 5  | 11 | 9   | 0                       | 0  | 0  | 0  |
| Door        | 3                          | 2  | 3  | 186 | 0                       | 0  | 0  | 0  |
| Douglas     | 0                          | 0  | 0  | 11  | 0                       | 0  | 0  | 0  |
| Dunn        | 0                          | 2  | 0  | 31  | 0                       | 0  | 0  | 0  |
| Eau Claire  | 0                          | 2  | 0  | 0   | 0                       | 0  | 0  | 0  |
| Florence    | 1                          | 0  | 0  | 7   | 0                       | 0  | 0  | 0  |
| Fond Du Lac | 8                          | 12 | 4  | 17  | 0                       | 0  | 0  | 0  |
| Forest      | 4                          | 0  | 0  | 3   | 0                       | 0  | 0  | 0  |
| Grant       | 11                         | 6  | 1  | 21  | 0                       | 0  | 0  | 0  |
| Green       | 7                          | 1  | 2  | 8   | 0                       | 0  | 0  | 0  |
| Green Lake  | 5                          | 1  | 4  | 4   | 0                       | 0  | 0  | 0  |
| Iowa        | 5                          | 2  | 3  | 13  | 0                       | 0  | 0  | 0  |
| Iron        | 5                          | 0  | 0  | 0   | 0                       | 0  | 0  | 0  |
| Jackson     | 3                          | 0  | 0  | 3   | 0                       | 0  | 0  | 0  |
| Jefferson   | 5                          | 4  | 3  | 23  | 0                       | 0  | 0  | 0  |
| Juneau      | 8                          | 4  | 3  | 8   | 0                       | 0  | 0  | 0  |
| Kenosha     | 0                          | 17 | 7  | 12  | 0                       | 0  | 0  | 0  |
| Kewaunee    | 3                          | 1  | 1  | 12  | 0                       | 0  | 0  | 0  |
| La Crosse   | 0                          | 3  | 4  | 1   | 0                       | 0  | 0  | 0  |
| Lafayette   | 6                          | 0  | 1  | 10  | 0                       | 0  | 0  | 0  |
| Langlade    | 1                          | 0  | 0  | 9   | 0                       | 0  | 0  | 0  |
| Lincoln     | 3                          | 0  | 1  | 5   | 0                       | 0  | 0  | 0  |
| Manitowoc   | 5                          | 3  | 4  | 8   | 0                       | 0  | 0  | 0  |
| Marathon    | 3                          | 2  | 1  | 2   | 0                       | 0  | 0  | 0  |
| Marinette   | 6                          | 0  | 1  | 36  | 0                       | 0  | 0  | 0  |
| Marquette   | 1                          | 3  | 3  | 19  | 0                       | 0  | 0  | 0  |
| Menominee   | 0                          | 0  | 0  | 0   | 0                       | 0  | 0  | 0  |
| Milwaukee   | 2                          | 3  | 0  | 1   | 0                       | 0  | 0  | 0  |
| Monroe      | 5                          | 3  | 2  | 12  | 0                       | 0  | 0  | 0  |
| Oconto      | 5                          | 3  | 4  | 27  | 0                       | 0  | 0  | 0  |
| Oneida      | 1                          | 4  | 3  | 21  | 0                       | 0  | 0  | 0  |
| Outagamie   | 9                          | 0  | 0  | 9   | 0                       | 0  | 0  | 0  |
| Ozaukee     | 1                          | 2  | 7  | 10  | 0                       | 0  | 0  | 0  |
| Pepin       | 0                          | 1  | 0  | 12  | 0                       | 0  | 0  | 0  |
| Pierce      | 1                          | 1  | 1  | 3   | 0                       | 0  | 0  | 0  |
| Polk        | 1                          | 0  | 0  | 43  | 0                       | 0  | 0  | 0  |
| Portage     | 3                          | 2  | 0  | 0   | 0                       | 0  | 0  | 0  |
| Price       | 3                          | 1  | 2  | 0   | 0                       | 0  | 0  | 0  |
| Racine      | 0                          | 6  | 8  | 11  | 0                       | 0  | 0  | 0  |
| Richland    | 5                          | 0  | 5  | 7   | 0                       | 0  | 0  | 0  |
| Rock        | 7                          | 11 | 7  | 9   | 0                       | 0  | 0  | 0  |
| Rusk        | 1                          | 1  | 1  | 0   | 0                       | 0  | 0  | 0  |
| Sauk        | 8                          | 4  | 2  | 5   | 0                       | 0  | 0  | 0  |
| Sawyer      | 1                          | 1  | 2  | 2   | 0                       | 0  | 0  | 0  |
| Shawano     | 9                          | 1  | 0  | 21  | 0                       | 0  | 0  | 0  |
| Sheboygan   | 7                          | 1  | 1  | 15  | 0                       | 0  | 0  | 1  |
| St. Croix   | 1                          | 3  | 2  | 15  | 0                       | 0  | 0  | 0  |
| Taylor      | 2                          | 0  | 0  | 1   | 0                       | 0  | 0  | 0  |
| Trempealeau | 3                          | 1  | 0  | 5   | 0                       | 0  | 0  | 0  |
| Unknown     | 0                          | 0  | 0  | 0   | 0                       | 0  | 0  | 0  |
| Vernon      | 4                          | 1  | 0  | 1   | 0                       | 0  | 0  | 0  |
| Vilas       | 3                          | 4  | 2  | 48  | 0                       | 0  | 0  | 0  |
| Walworth    | 2                          | 3  | 4  | 10  | 0                       | 0  | 0  | 0  |
| Washburn    | 1                          | 1  | 0  | 1   | 0                       | 0  | 0  | 0  |
| Washington  | 0                          | 5  | 6  | 1   | 0                       | 0  | 0  | 0  |
| Waukesha    | 4                          | 5  | 7  | 21  | 0                       | 0  | 0  | 0  |
| Waupaca     | 6                          | 2  | 0  | 8   | 0                       | 0  | 0  | 0  |
| Waushara    | 4                          | 2  | 1  | 25  | 0                       | 0  | 0  | 0  |
| Winnebago   | 4                          | 0  | 0  | 0   | 0                       | 0  | 0  | 0  |
| Wood        | 4                          | 4  | 0  | 0   | 0                       | 0  | 0  | 0  |

## September 2016

### Report on Public Water System Testing

MC is municipal community water system which means a water system which serves at least 15 service connections used by year round residents or regularly serves at least 25 year round resident and is owned by a county, city, village, town, town sanitary district, or utility district.

OC is other than municipal community water system which means a community water system that is not a municipal water system. Examples of other than municipal community water systems include but are not limited to those serving mobile home parks, apartments and condominiums.

NN is non-transient non-community water system which means a non-community water system that regularly serves at least 25 of the same persons over 6 months per year. Examples of non-transient non-community water systems include those serving schools, day care centers and factories.

TN is non-community transient water system which means a non-community water system that serves at least 25 people at least 60 days of the year. Examples of transient non-community water systems include those serving taverns, motels, restaurants, churches, campgrounds and parks.



|             | # of systems tested by SLH |    |    |    | # of Boil Water Notices |    |    |    |   |
|-------------|----------------------------|----|----|----|-------------------------|----|----|----|---|
|             | MC                         | OC | NN | TN | MC                      | OC | NN | TN |   |
| Adams       |                            | 3  | 2  | 0  | 2                       | 0  | 0  | 0  | 0 |
| Ashland     |                            | 3  | 0  | 2  | 0                       | 0  | 0  | 0  | 0 |
| Barron      |                            | 2  | 3  | 2  | 3                       | 0  | 0  | 0  | 0 |
| Bayfield    |                            | 1  | 0  | 0  | 0                       | 0  | 0  | 0  | 0 |
| Brown       |                            | 9  | 1  | 3  | 6                       | 0  | 0  | 0  | 0 |
| Buffalo     |                            | 3  | 0  | 0  | 4                       | 0  | 0  | 0  | 0 |
| Burnett     |                            | 0  | 1  | 1  | 22                      | 0  | 0  | 0  | 0 |
| Calumet     |                            | 7  | 2  | 1  | 0                       | 0  | 0  | 0  | 0 |
| Chippewa    |                            | 1  | 3  | 0  | 8                       | 0  | 0  | 0  | 0 |
| Clark       |                            | 6  | 1  | 3  | 19                      | 0  | 0  | 0  | 0 |
| Columbia    |                            | 10 | 7  | 2  | 5                       | 0  | 0  | 0  | 0 |
| Crawford    |                            | 5  | 1  | 0  | 3                       | 0  | 0  | 0  | 0 |
| Dane        |                            | 32 | 16 | 10 | 45                      | 0  | 0  | 0  | 0 |
| Dodge       |                            | 16 | 5  | 4  | 45                      | 0  | 0  | 0  | 0 |
| Door        |                            | 3  | 3  | 1  | 171                     | 0  | 0  | 0  | 0 |
| Douglas     |                            | 0  | 0  | 0  | 0                       | 0  | 0  | 0  | 0 |
| Dunn        |                            | 0  | 3  | 0  | 3                       | 0  | 0  | 0  | 0 |
| Eau Claire  |                            | 0  | 6  | 1  | 0                       | 0  | 0  | 0  | 0 |
| Florence    |                            | 1  | 0  | 1  | 3                       | 0  | 0  | 0  | 0 |
| Fond Du Lac |                            | 8  | 12 | 2  | 17                      | 0  | 0  | 0  | 0 |
| Forest      |                            | 4  | 0  | 0  | 1                       | 0  | 0  | 0  | 0 |
| Grant       |                            | 11 | 6  | 2  | 13                      | 0  | 0  | 0  | 0 |
| Green       |                            | 7  | 1  | 3  | 3                       | 0  | 0  | 0  | 0 |
| Green Lake  |                            | 5  | 1  | 1  | 1                       | 0  | 0  | 0  | 0 |
| Iowa        |                            | 6  | 2  | 1  | 22                      | 0  | 0  | 0  | 0 |
| Iron        |                            | 5  | 0  | 0  | 1                       | 0  | 0  | 0  | 0 |
| Jackson     |                            | 3  | 0  | 1  | 3                       | 0  | 0  | 0  | 0 |
| Jefferson   |                            | 5  | 3  | 2  | 21                      | 0  | 0  | 0  | 0 |
| Juneau      |                            | 8  | 4  | 0  | 8                       | 0  | 0  | 0  | 0 |
| Kenosha     |                            | 0  | 16 | 3  | 1                       | 0  | 0  | 0  | 0 |
| Kewaunee    |                            | 3  | 1  | 3  | 2                       | 0  | 0  | 0  | 0 |
| La Crosse   |                            | 0  | 3  | 0  | 1                       | 0  | 0  | 0  | 0 |
| Lafayette   |                            | 6  | 0  | 0  | 5                       | 0  | 0  | 0  | 0 |
| Langlade    |                            | 1  | 1  | 0  | 3                       | 0  | 0  | 0  | 0 |
| Lincoln     |                            | 3  | 0  | 0  | 3                       | 0  | 0  | 0  | 0 |
| Manitowoc   |                            | 4  | 3  | 4  | 4                       | 0  | 0  | 0  | 0 |
| Marathon    |                            | 3  | 1  | 3  | 0                       | 0  | 0  | 0  | 0 |
| Marinette   |                            | 6  | 0  | 2  | 10                      | 0  | 0  | 0  | 0 |
| Marquette   |                            | 1  | 3  | 3  | 11                      | 0  | 0  | 0  | 0 |
| Menominee   |                            | 0  | 0  | 0  | 0                       | 0  | 0  | 0  | 0 |
| Milwaukee   |                            | 2  | 3  | 1  | 0                       | 0  | 0  | 0  | 0 |
| Monroe      |                            | 5  | 3  | 1  | 5                       | 0  | 0  | 0  | 0 |
| Oconto      |                            | 5  | 3  | 2  | 11                      | 0  | 0  | 0  | 0 |
| Oneida      |                            | 1  | 4  | 0  | 0                       | 0  | 0  | 0  | 0 |
| Outagamie   |                            | 9  | 0  | 0  | 4                       | 0  | 0  | 0  | 0 |
| Ozaukee     |                            | 1  | 3  | 7  | 6                       | 0  | 0  | 0  | 0 |
| Pepin       |                            | 0  | 1  | 0  | 1                       | 0  | 0  | 0  | 0 |
| Pierce      |                            | 1  | 1  | 3  | 1                       | 0  | 0  | 0  | 0 |
| Polk        |                            | 1  | 0  | 0  | 18                      | 0  | 0  | 0  | 0 |
| Portage     |                            | 3  | 2  | 4  | 0                       | 0  | 0  | 0  | 0 |
| Price       |                            | 3  | 1  | 0  | 0                       | 0  | 0  | 0  | 0 |
| Racine      |                            | 0  | 5  | 7  | 14                      | 0  | 0  | 0  | 0 |
| Richland    |                            | 5  | 0  | 2  | 2                       | 0  | 0  | 0  | 0 |
| Rock        |                            | 7  | 11 | 4  | 37                      | 0  | 0  | 0  | 0 |
| Rusk        |                            | 1  | 1  | 0  | 0                       | 0  | 0  | 0  | 0 |
| Sauk        |                            | 8  | 3  | 7  | 15                      | 0  | 0  | 0  | 0 |
| Sawyer      |                            | 1  | 2  | 1  | 0                       | 0  | 0  | 0  | 0 |
| Shawano     |                            | 9  | 1  | 1  | 5                       | 0  | 0  | 0  | 0 |
| Sheboygan   |                            | 7  | 1  | 5  | 12                      | 0  | 0  | 0  | 0 |
| St. Croix   |                            | 1  | 3  | 0  | 3                       | 0  | 0  | 0  | 0 |
| Taylor      |                            | 3  | 0  | 1  | 1                       | 0  | 0  | 0  | 0 |
| Trempealeau |                            | 3  | 1  | 0  | 3                       | 0  | 0  | 0  | 0 |
| Unknown     |                            | 0  | 0  | 0  | 0                       | 0  | 0  | 0  | 0 |
| Vernon      |                            | 4  | 1  | 0  | 5                       | 0  | 0  | 0  | 0 |
| Vilas       |                            | 3  | 7  | 0  | 3                       | 0  | 0  | 0  | 0 |
| Walworth    |                            | 2  | 3  | 3  | 8                       | 0  | 0  | 0  | 0 |
| Washburn    |                            | 1  | 1  | 1  | 0                       | 0  | 0  | 0  | 0 |
| Washington  |                            | 0  | 4  | 3  | 4                       | 0  | 0  | 0  | 0 |
| Waukesha    |                            | 3  | 4  | 9  | 27                      | 0  | 0  | 0  | 0 |
| Waupaca     |                            | 6  | 2  | 0  | 5                       | 0  | 0  | 0  | 0 |
| Waushara    |                            | 4  | 2  | 0  | 15                      | 0  | 0  | 0  | 0 |
| Winnebago   |                            | 4  | 0  | 3  | 0                       | 0  | 0  | 0  | 0 |
| Wood        |                            | 4  | 4  | 0  | 0                       | 0  | 0  | 0  | 0 |

## October 2016

### Report on Public Water System Testing

MC is municipal community water system which means a water system which serves at least 15 service connections used by year round residents or regularly serves at least 25 year round resident and is owned by a county, city, village, town, town sanitary district, or utility district.

OC is other than municipal community water system which means a community water system that is not a municipal water system. Examples of other than municipal community water systems include but are not limited to those serving mobile home parks, apartments and condominiums.

NN is non-transient non-community water system which means a non-community water system that regularly serves at least 25 of the same persons over 6 months per year. Examples of non-transient non-community water systems include those serving schools, day care centers and factories.

TN is non-community transient water system which means a non-community water system that serves at least 25 people at least 60 days of the year. Examples of transient non-community water systems include those serving taverns, motels, restaurants, churches, campgrounds and parks.