

Plate Growth Distribution Training Guide

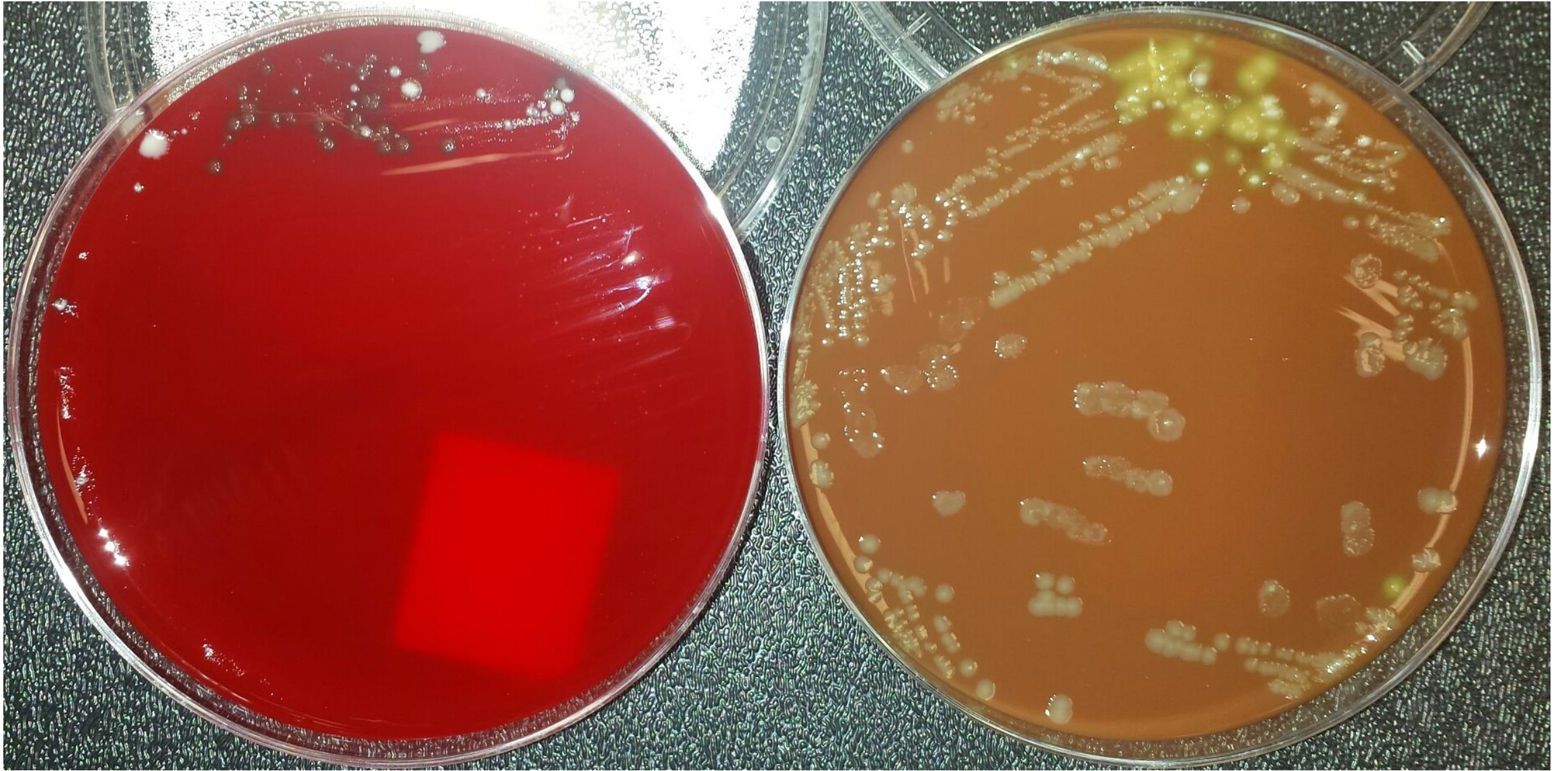
Lower Respiratory Tract Culture



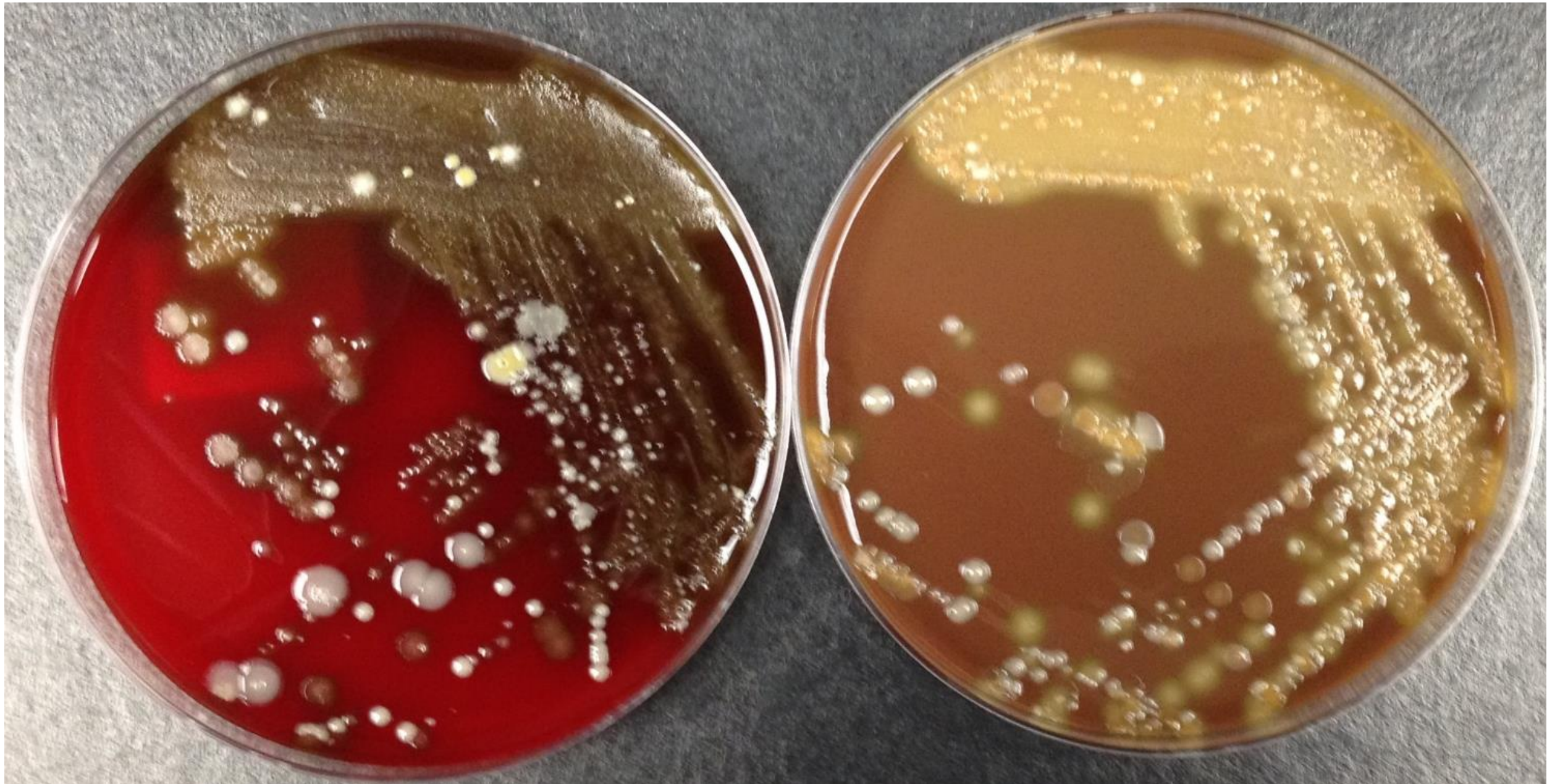
Compiled by:

Wisconsin Clinical Laboratory Network
Laboratory Technical Advisory Group (LabTAG)

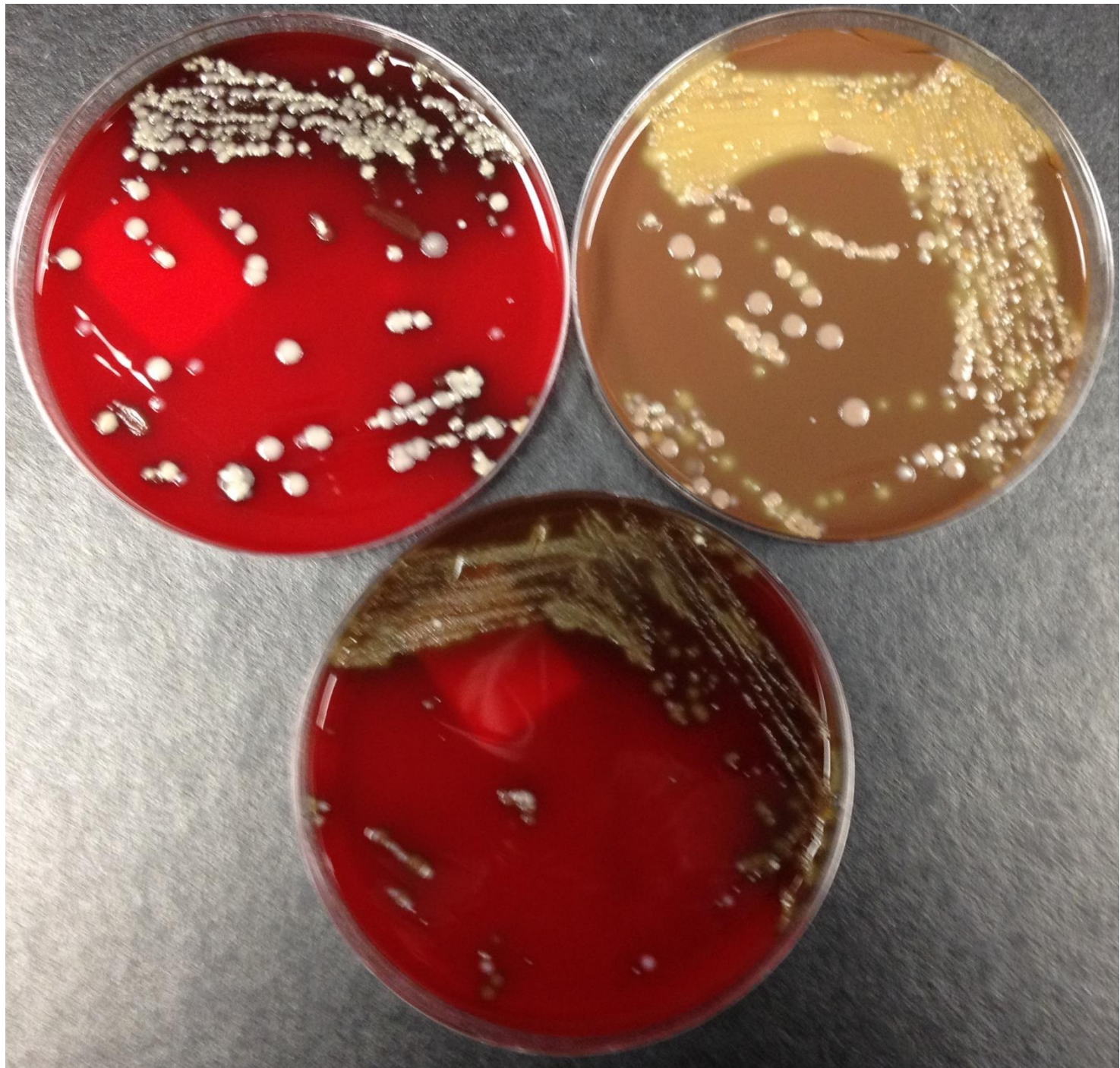
Sputum culture (blood, chocolate agar):
H. influenzae + rare normal respiratory flora



Sputum culture (blood, chocolate agar):
normal respiratory flora



Sputum culture (blood, chocolate, CNA agar):
normal respiratory flora



Endotracheal tube culture (blood, chocolate agar):
normal respiratory flora

