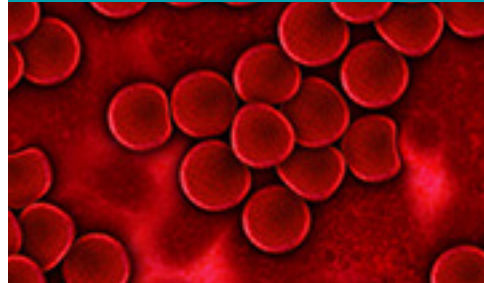


# CHEMICAL THREAT AGENTS

CALL POISON CONTROL 24/7 FOR TREATMENT INFORMATION **1.800.222.1222**

## BLOOD



### SYMPTOMS

- Vertigo
- Tachycardia
- Tachypnea
- Cyanosis
- Flu-like symptoms
- Nonspecific neurological symptoms

### INDICATIVE LAB TESTS

- Increased anion gap
- Metabolic acidosis
- Narrow pO<sub>2</sub> difference between arterial and venous samples

### DEFINITIVE TEST

- Blood cyanide levels

### POTENTIAL AGENTS

- Hydrogen Cyanide
- Hydrogen Sulfide
- Carbon Monoxide
- Cyanogen Chloride

## NERVE



### SYMPTOMS

- Diarrhea, diaphoresis
- Urination
- Miosis
- Bradycardia, bronchospasm
- Emesis
- Lacrimation
- Salivation, sweating

### INDICATIVE LAB TESTS

- Decreased cholinesterase
- Increased anion gap
- Metabolic acidosis

### DEFINITIVE TEST

- Urine nerve agent metabolites

### POTENTIAL AGENTS

- Sarin/Soman
- Tabun/VX
- Organophosphate Pesticides

## BLISTER



### SYMPTOMS

- Itching
- Erythema
- Yellowish blisters
- Flu-like symptoms
- Delayed eye irritation

### INDICATIVE LAB TEST

- Thiodiglycol present in urine

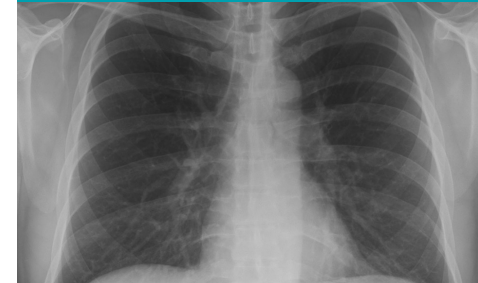
### DEFINITIVE TEST

- Urine blister agent metabolites

### POTENTIAL AGENTS

- Sulfur Mustard
- Nitrogen Mustard
- Phosgene Oxime
- Lewisite

## PULMONARY



### SYMPTOMS

- Upper respiratory tract irritation
- Rhinitis
- Coughing
- Choking
- Delayed pulmonary edema

### INDICATIVE LAB TESTS

- Decreased pO<sub>2</sub>
- Decreased pCO<sub>2</sub>
- Arterial blood gas
- Chest radiography

No definitive tests available

### POTENTIAL AGENTS

- Phosgene
- Diphosgene
- Chlorine
- Ammonia

## METALS



### SYMPTOMS

- Cough
- Metallic taste
- CNS effects
- Shortness of breath
- Flu-like symptoms
- Visual disturbances

### INDICATIVE LAB TESTS

- Proteinuria
- Renal assessment

### DEFINITIVE TESTS

- Blood metals panel
- Urine metals panel

### POTENTIAL AGENTS

- Dimethylmercury
- Lead
- Copper
- Mercury
- Arsenic
- Cadmium
- Thallium

## TOXINS



### SYMPTOMS

- Shock
- Organ failure

### INDICATIVE LAB TESTS

None Available

### DEFINITIVE TESTS

- Urine ricinine
- Urine abrine

### POTENTIAL AGENTS

- Ricin
- Abrin

Call the chemical threat laboratory at your state public health laboratory for appropriate specimen collection, packaging and shipping information: