

WSLH
PROFICIENCY
TESTING

CLINICAL PRODUCT CATALOG

2022



SARS CoV-2 PT Products

PRODUCT NAME	ITEM#	SHIP DATES	PAGE
SARS-CoV-2 Serology (SCA) Liquid samples for antibody detection. Includes reporting for total Ab, IgG, and IgM.	PT04340 PT04345 QE	Immunology Events <ul style="list-style-type: none">January 18September 6	32
Respiratory Multiplex (RP) Samples for molecular respiratory multiplex assay.	PT06240 PT06244 QE	Bacti_Viral Events <ul style="list-style-type: none">February 7May 2September 26	48
SARS-CoV-2 Antigen (CVW) Swabs for antigen tests targeting the SARS-CoV-2 nucleoprotein.	PT06290 PT06295 QE	Bacti_Viral Events <ul style="list-style-type: none">May 2September 26	49
SARS-CoV-2 Molecular Liquid (CLM) Liquid samples for molecular detection of SARS-CoV-2 (whole genome). Intended for large analyzer assays such as BD, Hologic, and Roche. NEW for 2022	PT06300 PT06305 QE	Bacti_Viral Events <ul style="list-style-type: none">May 2September 26	49
SARS/Viral Molecular - 5 samples (CM) Swabs with elution liquid for molecular detection of SARS-CoV-2 (whole genome). Now includes Influenza and RSV. Can be used for multi-analyte SARS/Viral methods or single SARS methods.	PT06270 PT06275 QE	Bacti_Viral Events <ul style="list-style-type: none">February 7May 2September 26	49
SARS/Viral Molecular - 3 samples (CMW) Swabs with elution liquid for molecular detection of SARS-CoV-2 (whole genome). Now includes Influenza and RSV for waived methods. Can be used for multi-analyte SARS/Viral methods or single SARS methods.	PT06280 PT06285 QE	Bacti_Viral Events <ul style="list-style-type: none">May 2September 26	49

TABLE OF CONTENTS

4	Why WSLH PT?
8	Chemistry - Blood Gas/Oximetry
10	Chemistry - Cardiac
11	Chemistry - General
20	Coagulation
22	Hematology
27	Immunohematology - Blood Bank
28	Immunology
33	Microbiology - Bacteriology
43	Microbiology - Mycobacteriology
44	Microbiology - Mycology
46	Microbiology - Parasitology
48	Microbiology - Virology
51	Urinalysis/Microscopy/Misc.
56	Andrology
58	Online Training and Competency
61	Assayed Sample Sets
62	Additional Products
63	Shipping Schedule
68	Index



YOUR LAB, OUR MISSION

The WSLH in WSLH Proficiency Testing stands for Wisconsin State Laboratory of Hygiene, our national public health lab located in Madison, Wisconsin. WSLH PT is the only PT provider that belongs to a public health laboratory, providing clinical laboratories like yours with reliable, affordable, and easy-to-use proficiency testing products with rapid access to results.

Questions? Contact WSLH PT Customer Service:
(800) 462-5261 | ptservice@slh.wisc.edu

OUR HISTORY

WSLH Proficiency Testing has been building a solid foundation for laboratory improvement since 1966. WSLH PT was developed by the Wisconsin State Lab of Hygiene (WSLH) to create proficiency testing programs that improved laboratory quality. Today, we provide proficiency testing services across the United States and in countries around the world. Based in Madison, Wisconsin, WSLH Proficiency Testing is the only PT provider that belongs to a national public health laboratory, and is affiliated with the state's flagship higher education institution, the University of Wisconsin-Madison.

OUR COMMUNITY

Each of our clinical and environmental proficiency testing programs has a dedicated Medical Technologist with at least 5 years of laboratory bench experience, extensive instrument knowledge and unparalleled customer service to support your laboratory's needs. WSLH Proficiency Testing is approved by CMS, and is accepted by the College of American Pathologists (CAP), The Joint Commission, and COLA.



WHY WSLH PT?

Reliable, affordable, & easy-to-use proficiency testing products

EASE THE BURDEN ON LAB STAFF

- PT Data Upload available
- Easy report access
- Flexible ordering at competitive prices
- Staggered shipments
- 14 day average report turnaround time
- Wide array of QA options
- Customized continuing education
- Calibration verification products available to order



HOW CAN WE BEST SERVE YOU?

We want to know! To learn more about WSLH PT, to enroll, or discuss options, visit wslhpt.org or contact customer service at (800) 462-5261.

Enrollment made easy

"Working with WSLH was an excellent experience." -Cathy S.

NEW CUSTOMERS

Submit a [New Customer PT Enrollment Form](#)

To order, submit a form online at wslhpt.org. Once a form is submitted, customer service will assign your lab a WSLH PT ID number and email you an enrollment confirmation. You can expect to receive a confirmation letter and a customized shipping schedule via email within 24 hours of order receipt.

Note: Experienced Medical Technologists are available Monday-Friday, 8:00am-4:30pm (CST) to assist you at (800) 462-5261.

CURRENT CUSTOMERS

Re-enrollment

Current customers will receive a new catalog and a re-enrollment packet via USPS that contains a list of programs that the lab was enrolled in the previous year. Review and edit selections where necessary and return forms for processing. You can expect to receive a confirmation letter and a customized shipping schedule via email once re-enrollment has been processed.

Changes to Active Enrollment or Account Information

To update contact or agency information, or add or drop PT enrollment at any time, please complete a [Customer Change Form](#) online at wslhpt.org. You will receive an updated enrollment confirmation reflecting the requested changes.

SHIPPING INFORMATION

WSLH PT provides a customized shipping schedule with your enrollment confirmation. Customers with a valid email address under "Shipping Information" on the Enrollment Form will receive an email notification for each shipment. Most packages will arrive within 2 days of the scheduled ship date. Overnight shipments are designated on the shipping calendar. Your facility must make arrangements to accept delivery and have the package routed immediately to the appropriate location for proper handling and storage.

If you do not receive samples within 2 days of the scheduled ship date, please contact WSLH PT at (800) 462-5261. **Please notify WSLH PT in advance of any address changes.** Import permits or customs forms must be provided by international customers at least 30 calendar days prior to the first scheduled shipment.

CANCELLATION OF PRODUCTS

To cancel products, complete a [Customer Change Form](#) online at wslhpt.org. All cancellations must be submitted in writing at least 30 days prior to a scheduled shipment date. A credit will be applied to your account, if appropriate. The annual processing fee is non-refundable. Refund requests will be handled on a case by case basis by the accounts receivable department.

To assure participation in all shipments, enrollment and order forms must be received by December 1st. Contact us for sample availability after December 1st.

A NOTE FOR CAP ACCREDITED CUSTOMERS

WSLH PT is accepted by the CAP Laboratory Accreditation Program (LAP) to fulfill PT requirements for most analytes and procedures. **Analytes and procedures not accepted are indicated in this catalog with an asterisk (*) by program.**

Laboratories can determine if enrollment in PT is required by reviewing the information on their CAP Laboratory Activity Menu report. Current and potential customers should carefully review the information before placing their order with WSLH PT.



PROF PRO

PRIMARY PRODUCTS include one set of samples and reporting for one set of results per shipment unless otherwise specified. **Analytes and procedures listed under the Regulated column are regulated under CLIA '88. Add-on products may only be ordered in conjunction with specific primary products.**

QUALITY EVALUATION (QE) PRODUCTS include one set of samples and reporting for one set of results per shipment unless otherwise specified. These products can only be ordered in conjunction with a corresponding Primary product and may be ordered in multiples. Result sets reported for any QE products may be ordered for QA purposes, to test a secondary method, or for additional sample volume. Contact WSLH PT for QE products not listed.

ADDITIONAL PRODUCTS include Assayed Sample Sets, AUDIT MicroControls Calibration Verification/Linearity, CEQAL Accuracy Monitoring Products, evaluation sets, off-schedule proficiency testing, and online competency / training with continuing education credits.

EFFICIENCY TESTING PRODUCTS

NEW FOR 2022

PAGE	PRODUCT NAME
29	HIV Ag/Ab Combo Waived Methods (HCW)
49	SARS-CoV-2 Molecular Liquid (CLM)
59	MTS Training Courses Case Studies in Laboratory Stewardship • Managing Reference Labs • Crithidia
60	MTS POC Tests Acceava Strep A • Alere hCG Cassette • BinaxNow COVID-19 Ag Card • BinaxNow Influenza A&B Card 2 • Cepheid Xpress SARS-Co-V-2 • Clearview Mono • ID Now Influenza A&B • Sofia Influenza A+B

CHEMISTRY

▲ Blood Gas / Oximetry

Blood Gases / Electrolytes / Metabolites (BG)

3mL aqueous samples compatible with most blood gas instruments including ABL, Cobas, EPOC, GEM, i-STAT, IRMA, OPTI, RAPIDLab, RAPIDPoint and OTHER systems.

Item PT01050

QE Product Item PT01060

	CLIA REGULATED	UNREGULATED
ANALYTES	<ul style="list-style-type: none"> • Chloride • Creatinine • Glucose • pCO₂ • pH 	<ul style="list-style-type: none"> • pO₂ • Potassium • Sodium • Urea nitrogen (BUN) • Carbon dioxide, total • Ionized calcium • Ionized magnesium * • Lactate

* Analyte(s) not yet accepted by the CAP Laboratory Accreditation Program

2022 Ship Dates February 28 June 27 October 31 Three shipments per year
Five samples per shipment

Blood Gas Hemoglobin / Hematocrit (BGH), add-on to BG

2.5mL aqueous samples. This product can only be ordered in conjunction with BG above. IL GEM and ABL90 FLEX users should report these analytes under the CO-Oximetry product on page 9.

Add-on to BG Item PT01570

QE Product Item PT01580

	CLIA REGULATED	UNREGULATED
ANALYTES	<ul style="list-style-type: none"> • Hematocrit • Hemoglobin 	

2022 Ship Dates February 28 June 27 October 31 Three shipments per year
Five samples per shipment

i-STAT Chemistries PLUS (BGB)

2.5mL BLUE aqueous samples intended for use on i-STAT systems. Includes Hemoglobin and Hematocrit. Single set of five samples.

Item PT01345

QE Product Item PT01347

	CLIA REGULATED	UNREGULATED
ANALYTES	<ul style="list-style-type: none"> • Chloride • Creatinine • Glucose • Hematocrit • Hemoglobin • pCO₂ 	<ul style="list-style-type: none"> • pH • pO₂ • Potassium • Sodium • Urea nitrogen (BUN) • Carbon dioxide, total • Ionized calcium • Lactate

2022 Ship Dates February 28 June 27 October 31 Three shipments per year
Five samples per shipment

CHEMISTRY

▲ Blood Gas / Oximetry

CHEMISTRY - BG/OX

CO-Oximetry (CO)

Item PT01330

QE Product Item PT01340

2mL samples of stabilized hemoglobin solution.

	CLIA REGULATED	UNREGULATED
ANALYTES	<ul style="list-style-type: none">• Hematocrit• Hemoglobin, total	<ul style="list-style-type: none">• Carboxyhemoglobin• Oxyhemoglobin• Methemoglobin
2022 Ship Dates	February 28	June 27
	October 31	Three shipments per year Five samples per shipment

i-STAT Chemistries - Waived Methods (BGW)

Item PT01400

QE Product Item PT01425

2.5mL aqueous samples intended for use on waived i-STAT cartridges. Laboratories using non-waived methods should refer to BGB or BG products on prior page.

	CLIA REGULATED	UNREGULATED
ANALYTES		<ul style="list-style-type: none">• Chloride• Creatinine• Glucose• Hematocrit• Hemoglobin• Potassium• Sodium• Urea nitrogen (BUN)
2022 Ship Dates	February 28	June 27
		Two shipments per year Three samples per shipment



CHEMISTRY

▲ Cardiac

Cardiac Markers - 5 Samples (IE)

1.5mL liquid samples. Compatible with automated methods such as Abbott i-STAT, Alere Triage, Architect, Beckman Coulter, Roche, Siemens, and Vitros.

	CLIA REGULATED	UNREGULATED
ANALYTES	<ul style="list-style-type: none"> • CK-MB • CK, total 	<ul style="list-style-type: none"> • BNP • D-dimer (Alere Triage only) • hs-CRP • Myoglobin • NT-proBNP • Troponin I • Troponin T

2022 Ship Dates February 21 May 23 October 3 Three shipments per year
Five samples per shipment

Item PT01260

QE Product Item PT01270

NOTE: For CRP methods screening for non-specific inflammatory disease, see XP product on page 28.

D-dimer in this module is for laboratories using the Alere Triage. Other instrumentation, see DD product on page 20.

CAP accredited labs must test five samples for non-waived methods except for D-dimer, Myoglobin, and hs-CRP.

Cardiac Markers - 3 Samples (TM)

1.5mL liquid samples. Compatible with automated methods such as Abbott i-STAT, Alere Triage, Architect, Beckman Coulter, Roche, Siemens, and Vitros.

	CLIA REGULATED	UNREGULATED
ANALYTES		<ul style="list-style-type: none"> • BNP • D-dimer (Alere Triage only) • hs-CRP • Myoglobin • NT-proBNP • Troponin I • Troponin T

2022 Ship Dates May 23 October 3 Two shipments per year
Three samples per shipment

Item PT01230

QE Product Item PT01255

NOTE: For CRP methods screening for non-specific inflammatory disease, see XP product on page 28.

D-dimer in this module is for laboratories using the Alere Triage. Other instrumentation, see DD product on page 20.

CAP accredited labs must test five samples for non-waived methods except for D-dimer, Myoglobin, and hs-CRP.

LET YOUR DATA FLOW

WSLH PT's DATA UPLOAD

- » Save time
- » Reduce errors
- » Handle your PT data like your patient data

Learn more at wslhpt.org

Potassium-4.6 (mmol/L)
Sodium-140 (mmol/L)
Hemoglobin-13.6 (g/dL)
Glucose-96 (mg/dL)
Leukocytes-7.6(10⁹/L)

Alcohol/Ketones, serum (AM)

2mL liquid samples. Beta-hydroxybutyrate is compatible with instrumentation using Stanbio reagent as well as with POC meters such as Abbott Xceed Pro and Stanbio STAT-site M.

Item PT01000

QE Product Item PT01010

	CLIA REGULATED	UNREGULATED
ANALYTES	<ul style="list-style-type: none"> Alcohol (ethanol) 	<ul style="list-style-type: none"> Acetone (qualitative) Acetone (semi-quantitative) Beta-hydroxybutyrate

2022 Ship Dates January 24 April 25 August 29 Three shipments per year
Five samples per shipment

Ammonia (NH)

2mL liquid samples.

Item PT01020

QE Product Item PT01045

	CLIA REGULATED	UNREGULATED
ANALYTES		<ul style="list-style-type: none"> Ammonia

2022 Ship Dates February 21 October 3 Two shipments per year
Three samples per shipment

Bilirubin - Elevated (NB)

1mL liquid samples containing elevated levels of bilirubin similar to those found in neonates and liver disease.

Item PT01430

QE Product Item PT01440

	CLIA REGULATED	UNREGULATED
ANALYTES	<ul style="list-style-type: none"> Bilirubin, total 	<ul style="list-style-type: none"> Bilirubin, direct

2022 Ship Dates February 21 May 23 October 3 Three shipments per year
Five samples per shipment

CHEMISTRY

▲ General

Blood Lead - 5 Samples (PB)

1mL whole blood samples.

Item PT01080
QE Product Item PT01085

	CLIA REGULATED	UNREGULATED
ANALYTES	• Blood lead	

2022 Ship Dates March 21 June 20 November 14 Three shipments per year
Five samples per shipment

Blood Lead - 3 Samples (BL)

1mL whole blood samples.

Item PT01070
QE Product Item PT01077

	CLIA REGULATED	UNREGULATED
ANALYTES		• Blood lead

2022 Ship Dates March 21 November 14 Two shipments per year
Three samples per shipment

Body Fluid Chemistry (PC)

3mL liquid samples intended to simulate pleural, peritoneal, and miscellaneous body fluids.

Item PT01120
QE Product Item PT01145

	CLIA REGULATED	UNREGULATED
ANALYTES		<ul style="list-style-type: none"> • Albumin • Amylase • Cholesterol • Creatinine • Glucose • LDH • pH (quantitative) • Protein • Triglycerides

2022 Ship Dates February 21 October 3 Two shipments per year
Three samples per shipment

NOTE: For spinal fluid, see SF product on page 17. For urine, see CU on page 18.

Body Fluid pH - Visual (PH)

0.5mL liquid samples intended for pH measurement by color comparison methods including amniotic and miscellaneous body fluid pH measurement. Samples are compatible with non-nitrazine and nitrazine test strips, swabs, and paper.

Item PT01150
QE Product Item PT01175

NOTE: For urine pH, see UR product on page 54.

	CLIA REGULATED	UNREGULATED
ANALYTES		<ul style="list-style-type: none"> • pH (color comparison) • pH interpretation (ruptured, not ruptured)

2022 Ship Dates February 21 October 3 Two shipments per year
Three samples per shipment

Chemistry - Waived Methods (WC)

5mL liquid samples intended for instruments using waived cartridges such as CardioChek (reflectance test strips only), Cholestech LDX, Roche Accutrend, and Abaxis Piccolo (waived). Laboratories using Abaxis Piccolo non-waived cartridges should refer to the CET product on the next page.

Item PT01282

QE Product Item PT01284

NOTE: For i-STAT chemistry waived cartridges, see BGW product on page 9.

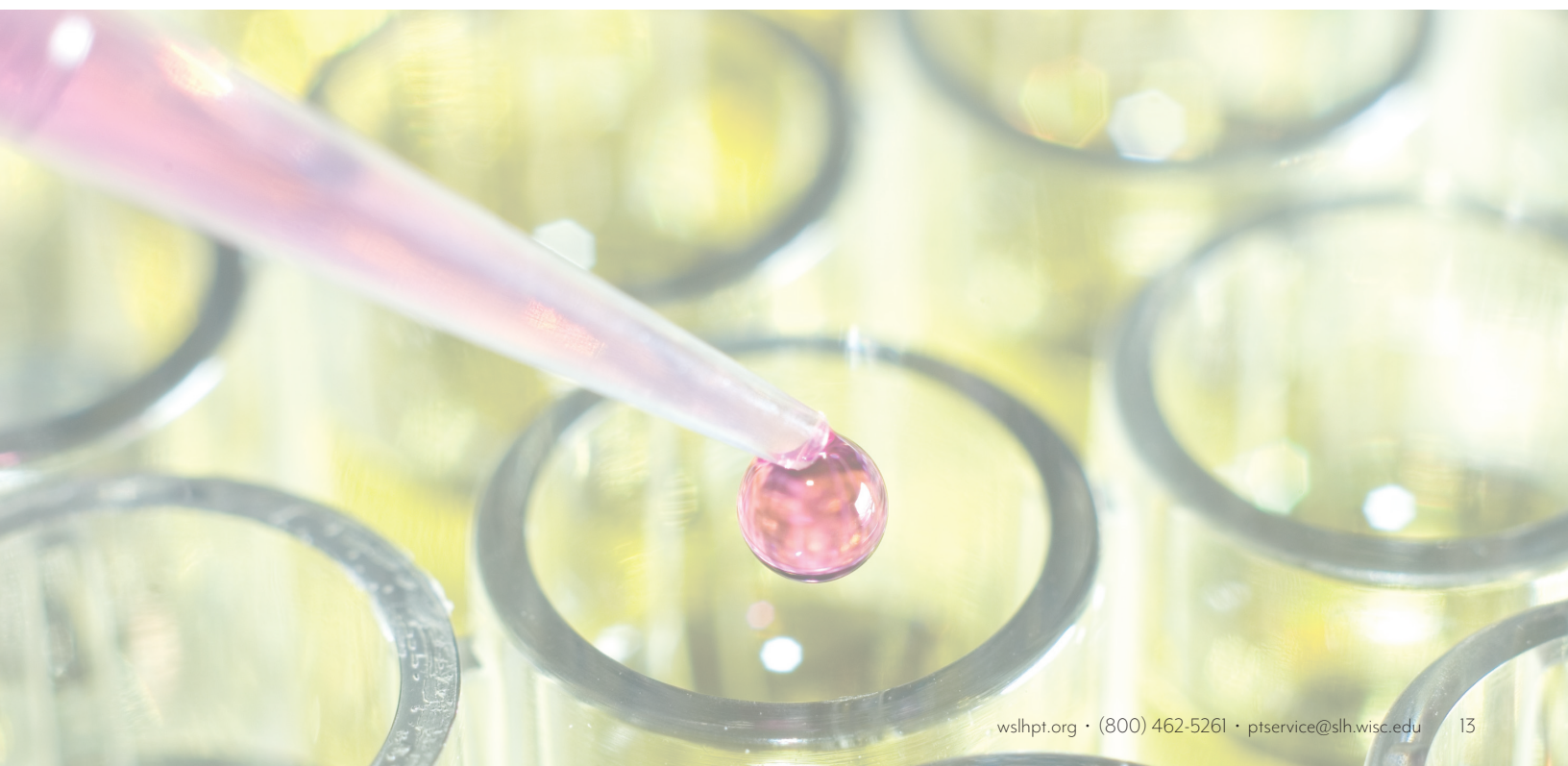
For CardioChek eGLU (glucose electrochemical test strips), see WBG 3 sample product on page 15.

ANALYTES	CLIA REGULATED	UNREGULATED	
		<ul style="list-style-type: none"> • ALT • Albumin • ALKP • Amylase • AST • Bilirubin, total • Calcium, total • CO₂ • Chloride • Cholesterol, HDL • Cholesterol, LDL (calculated) 	<ul style="list-style-type: none"> • Cholesterol, total • Creatine Kinase (CK) • Creatinine • GGT • Glucose • Phosphorus • Potassium • Protein, total • Sodium • Triglycerides • Urea nitrogen (BUN) • Uric acid

2022 Ship Dates January 24

August 29

Two shipments per year
Three samples per shipment



CHEMISTRY

▲ General

Chemistry/Endocrinology/Therapeutic Drugs (CET)

5mL liquid samples.

	CLIA REGULATED	UNREGULATED
ANALYTES	<ul style="list-style-type: none"> • ALT • Albumin • ALKP • Alpha-fetoprotein • Amylase • AST • Bilirubin, total • Calcium, total • Carbamazepine • Chloride • Cholesterol, HDL • Cholesterol, total • Cortisol • Creatine Kinase (CK) • Creatinine • Digoxin • Gentamicin • Glucose • hCG, quantitative (serum) • Iron, total 	<ul style="list-style-type: none"> • LDH • Lithium • Magnesium • Phenobarbital • Phenytoin (Dilantin) • Potassium • Protein, total • Sodium • Theophylline • TSH • T3, total • T4, free (FT4) • T4, total • T-Uptake • Tobramycin • Triglycerides • Urea nitrogen (BUN) • Uric acid • Valproic acid
		<ul style="list-style-type: none"> • Acetaminophen • Amikacin * • Bilirubin, direct • CO₂ • Cholesterol, LDL (calculated) • Cholesterol, LDL (measured) • GGT • Lactate • Lipase • Osmolality • Phosphorus • Salicylate • T3, free (FT3) • TIBC, calculated • TIBC, measured • UIBC * • Vancomycin

1-11 Analytes Item PT01310
 12-21 Analytes Item PT01314
 22-30 Analytes Item PT01318
 31+ Analytes Item PT01322
 QE Product Item PT01326

NOTE: i-STAT users may enroll in CET for hCG quantitative. For i-STAT chemistry analytes, see BG, BGB, or BGW products on page 8, 9.

* Analyte(s) not yet accepted by the CAP Laboratory Accreditation Program

2022 Ship Dates January 24 April 25 August 29 Three shipments per year
 Five samples per shipment

hCG, serum - Qualitative (HCG)

1mL liquid samples.

	CLIA REGULATED	UNREGULATED
ANALYTES	<ul style="list-style-type: none"> • hCG, qualitative (serum) 	
2022 Ship Dates	January 24 April 25 August 29	Three shipments per year Five samples per shipment

Item PT01480
 Add-on to any CET Product Item PT01495
 QE Product Item PT01490

NOTE: For laboratories reporting both hCG quantitative and hCG qualitative, only the hCG quantitative score will be transmitted to accreditation agencies.

Glucose Whole Blood - 5 Samples (WBG)

Whole blood samples intended for waived glucose meters. Samples are compatible with most blood glucose meters used for ancillary/point of care testing including HemoCue glucose systems.

	CLIA REGULATED	UNREGULATED
ANALYTES		• Whole Blood Glucose
2022 Ship Dates	April 4	October 17
		Two shipments per year Five samples per shipment

Item PT01886

QE Product Item PT01888

Additional Samples Item PT01890

NOTE: QE product includes one set of samples and reporting for up to 20 result sets. Additional Samples product includes one set of samples and no additional reporting.

Glucose Whole Blood - 3 Samples (WBG)

Whole blood samples intended for waived glucose meters. Samples are compatible with most blood glucose meters used for ancillary/point of care testing including HemoCue glucose systems.

	CLIA REGULATED	UNREGULATED
ANALYTES		• Whole Blood Glucose
2022 Ship Dates	April 4	October 17
		Two shipments per year Three samples per shipment

Item PT01880

QE Product Item PT01895

Additional Samples Item PT01884

NOTE: QE product includes one set of samples and reporting for up to 20 result sets. Additional Samples product includes one set of samples and no additional reporting.

Hemoglobin - Waived Methods (HWG)

Whole blood samples intended for use with waived hemoglobin systems. Compatible with HemoCue Hb 201, HemoPoint H2, and other waived hemoglobin systems. Samples are NOT compatible with HemoCue Hb 301 and HemoCue Hb 801. See HWH product below.

	CLIA REGULATED	UNREGULATED
ANALYTES		• Hemoglobin
2022 Ship Dates	April 4	October 17
		Two shipments per year Three samples per shipment

Item PT01450

QE Product Item PT01475

Hemoglobin - HemoCue Hb 301 and Hb 801 - Waived (HWH)

Whole blood samples intended for use with HemoCue Hb 301 and HemoCue Hb 801.

	CLIA REGULATED	UNREGULATED
ANALYTES		• Hemoglobin*
2022 Ship Dates	April 4	October 17
		Two shipments per year Three samples per shipment

Item PT01455

QE Product Item PT01465

* Analyte(s) not yet accepted by the CAP Laboratory Accreditation Program

CHEMISTRY

▲ General

Hemoglobin A1c (Glycohemoglobin) - 5 Samples (GHR)

1mL whole blood samples. These samples are NOT compatible with the Afinion analyzer. See GHA product below.

	CLIA REGULATED	UNREGULATED
ANALYTES		• Hemoglobin A1c

2022 Ship Dates January 24 April 25 August 29 Three shipments per year
Five samples per shipment

Item PT01524

QE Product Item PT01529

CAP accredited labs using a non-waived method must test five samples for glycohemoglobin.

Hemoglobin A1c (Glycohemoglobin) - 3 Samples (GH)

1mL whole blood samples. These samples are NOT compatible with the Afinion analyzer. See GHA product below.

	CLIA REGULATED	UNREGULATED
ANALYTES		• Hemoglobin A1c

2022 Ship Dates February 21 October 3 Two shipments per year
Three samples per shipment

Item PT01500

QE Product Item PT01522

CAP accredited labs using a non-waived method must test five samples for glycohemoglobin.

Hemoglobin A1c (Glycohemoglobin) - Afinion (GHA)

0.5mL whole blood samples intended for use with the Afinion analyzer.

	CLIA REGULATED	UNREGULATED
ANALYTES		• Hemoglobin A1c

2022 Ship Dates February 21 October 3 Two shipments per year
Three samples per shipment

Item PT01530

QE Product Item PT01555

Immunoassay Chemistry (CS)

5mL liquid samples.

	CLIA REGULATED	UNREGULATED
ANALYTES		<ul style="list-style-type: none"> • CEA • DHEA Sulfate * • Estradiol • Ferritin • Folate • FSH • Homocysteine • LH
		<ul style="list-style-type: none"> • Prealbumin • Progesterone • Prolactin • PSA, total • Testosterone, total • Transferrin • Vitamin B12

2022 Ship Dates February 21 October 3 Two shipments per year
Three samples per shipment

1-5 Analytes Item PT01680

6+ Analytes Item PT01695

QE Product 1-5 Analytes Item PT01692

QE Product 6+ Analytes Item PT01707

* Analyte(s) not yet accepted by the CAP Laboratory Accreditation Program

Immunoassay Chemistry B (CSB)

Lyophilized serum samples. A 2.0mL class A volumetric pipette and reagent-grade water are recommended for reconstitution.

Item PT01710

QE Product Item PT01715

	CLIA REGULATED	UNREGULATED
ANALYTES		<ul style="list-style-type: none"> • 25-OH Vitamin D, total • C-peptide * • Insulin * • PTH, intact

* Analyte(s) not yet accepted by the CAP Laboratory Accreditation Program

2022 Ship Dates February 21 October 3 Two shipments per year
Three samples per shipment

Procalcitonin (PCT)

Lyophilized serum samples. A 2.0mL class A volumetric pipette and reagent-grade water are recommended for reconstitution.

Item PT01900

QE Product Item PT01905

	CLIA REGULATED	UNREGULATED
ANALYTES		<ul style="list-style-type: none"> • Procalcitonin *

* Analyte(s) not yet accepted by the CAP Laboratory Accreditation Program

2022 Ship Dates February 21 October 3 Two shipments per year
Three samples per shipment

SHBG and Testosterone (SHBG)

Lyophilized serum samples. A 2.0mL class A volumetric pipette and reagent-grade water are recommended for reconstitution.

Item PT01970

	CLIA REGULATED	UNREGULATED
ANALYTES		<ul style="list-style-type: none"> • Sex hormone-binding globulin * • Testosterone, bioavailable • Testosterone, total • Testosterone, free

* Analyte(s) not yet accepted by the CAP Laboratory Accreditation Program

2022 Ship Dates February 21 October 3 Two shipments per year
Three samples per shipment

Spinal Fluid Chemistry (SF)

2mL liquid samples.

Item PT01720

Add-on to PC Product Item PT01722

QE Product Item PT01745

	CLIA REGULATED	UNREGULATED
ANALYTES		<ul style="list-style-type: none"> • Chloride • Glucose • Lactic acid • LDH • Potassium * • Protein • Sodium *

* Analyte(s) not yet accepted by the CAP Laboratory Accreditation Program

2022 Ship Dates February 21 October 3 Two shipments per year
Three samples per shipment

CHEMISTRY

▲ General

Tumor Markers (MT)

2mL liquid samples.

	CLIA REGULATED	UNREGULATED
ANALYTES		<ul style="list-style-type: none"> • Beta-2 Microglobulin * • CA 125 • CA 15-3 * • CA 19-9 * • CA 27.29 * • PSA, free *

2022 Ship Dates February 21 October 3 Two shipments per year
Three samples per shipment

Item PT01750
QE Product Item PT01775

NOTE: CEA and PSA, total are available under the Immunoassay Chemistry (CS) product on page 16.

* Analyte(s) not yet accepted by the CAP Laboratory Accreditation Program

Urine Chemistry (CU)

10mL liquid samples. These samples are NOT compatible with the Afinion analyzer. See ACR product below.

	CLIA REGULATED	UNREGULATED
ANALYTES		<ul style="list-style-type: none"> • A/C ratio, quantitative • A/C ratio, semi-quantitative • Amylase • Calcium • Chloride • Creatinine, quantitative • Creatinine, semi-quantitative * • Glucose • Magnesium • Microalbumin, quantitative • Microalbumin, semi-quantitative * • Osmolality • Phosphorus • Potassium • Protein • Sodium • Urea nitrogen • Uric acid

2022 Ship Dates February 21 October 3 Two shipments per year
Three samples per shipment

1-3 Analytes Item PT01780
4-10 Analytes Item PT01786
11+ Analytes Item PT01792
QE Product 1-3 Analytes Item PT01785
QE Product 4-10 Analytes Item PT01791
QE Product 11+ Analytes Item PT01797

* Analyte(s) not yet accepted by the CAP Laboratory Accreditation Program

Urine Chemistry - Afinion (ACR)

3mL liquid samples intended for use with the Afinion analyzer.

	CLIA REGULATED	UNREGULATED
ANALYTES		<ul style="list-style-type: none"> • A/C ratio • Microalbumin • Urine Creatinine

2022 Ship Dates February 21 October 3 Two shipments per year
Three samples per shipment

Item PT01960

Urine Drug Adulteration Test (UDA)

10mL liquid samples for use with urine adulterant detection methods.

Item PT01950

QE Product Item PT01955

	CLIA REGULATED	UNREGULATED
ANALYTES		<ul style="list-style-type: none"> • Creatinine • Nitrites • Oxidants
		<ul style="list-style-type: none"> • pH • Specific gravity

2022 Ship Dates January 24 April 25 August 29 Three shipments per year
Two samples per shipment

Urine Drug Screen (UD)

10mL liquid samples intended for the qualitative detection of drugs using urine immunoassay screening procedures.

Item PT01810

QE Product Item PT01835

	CLIA REGULATED	UNREGULATED
ANALYTES		<ul style="list-style-type: none"> • Acetaminophen • 6-AM (6-Acetylmorphine) • Amphetamines • Barbiturates • Benzodiazepines • Buprenorphine • Cannabinoids (THC) • Carisoprodol * • Cocaine metabolites • Cotinine • EDDP * • Ethanol (Alcohol) • Fentanyl *
		<ul style="list-style-type: none"> • MDMA (Ecstasy) • Meperidine * • Methadone • Methamphetamine • Methaqualone • Opiates • Oxycodone • Phencyclidine (PCP) • Propoxyphene • Tramadol * • Tricyclic antidepressants • Zolpidem *

* Analyte(s) not yet accepted by the CAP Laboratory Accreditation Program

2022 Ship Dates January 24 April 25 August 29 Three shipments per year
Two samples per shipment

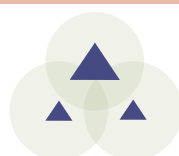
Urine Drug Screen - Ethyl Glucuronide (ETG)

5mL liquid samples intended for the qualitative detection of EtG in urine.

Item PT01980

	CLIA REGULATED	UNREGULATED
ANALYTES		<ul style="list-style-type: none"> • Ethyl Glucuronide (EtG)

2022 Ship Dates January 24 April 25 August 29 Three shipments per year
Two samples per shipment



COAGULATION

Activated Clotting Time (CT)

Lyophilized samples with paired diluents, calcium chloride solutions (activator), and method-differentiated handling instructions. Compatible with Hemochron, HemoTec, i-STAT, Medtronic HMS and OTHER methods.

Item PT02030
QE Product Item PT02052

ANALYTES	CLIA REGULATED	UNREGULATED
		• Activated clotting time (ACT)
2022 Ship Dates February 14 September 12 Two shipments per year Three samples per shipment		

Coagulation - Basic (CA)

Lyophilized plasma samples. Use of a 1.0mL class A volumetric pipette and reagent-grade water are recommended for reconstitution. NOT compatible with whole blood systems (i-STAT, ITC, CoaguChek, or Coag-Sense). INR Calculation "dry exercise" is available for CAP-accredited labs.

Item PT02060
QE Product Item PT02070

ANALYTES	CLIA REGULATED	UNREGULATED
	• Activated partial thromboplastin time (APTT) • Protome (PT) • Fibrinogen	• INR
2022 Ship Dates February 14 June 6 September 12 Three shipments per year Five samples per shipment		

D-dimer (DD)

1.0mL liquid samples. Compatible with most D-dimer kits including Sysmex CA and CS, Alere Triage, Stago, and OTHER methods. Educational D-dimer interpretation available.

Item PT02080
QE Product Item PT02105

NOTE: Customers using Alere Triage for cardiac markers, see IE or TM product on page 10.

ANALYTES	CLIA REGULATED	UNREGULATED
		• D-dimer, quantitative
2022 Ship Dates February 14 September 12 Two shipments per year Three samples per shipment		

COAGULATION

Protime / INR - Whole Blood CoaguChek XS (PXS)

Lyophilized samples intended for non-waived Roche CoaguChek XS systems. Also available to waived system users wanting more challenges per year. Waived system users reporting only INR may consider CXSW product.

Item PT02350
QE Product Item PT02360

ANALYTES	CLIA REGULATED	UNREGULATED		
	• Protime (PT)	• INR		
2022 Ship Dates	February 14	June 6	September 12	Three shipments per year Five samples per shipment

INR - CoaguChek - Waived Methods (CXSW)

Lyophilized samples for CoaguChek XS or CoaguChek XS Plus (waived use).

Item PT02320
QE Product Item PT02345

ANALYTES	CLIA REGULATED	UNREGULATED		
		• INR		
2022 Ship Dates	February 14	September 12		Two shipments per year Three samples per shipment

Protime / INR - Whole Blood, i-STAT and Coag-Sense (PRC)

Lyophilized samples intended for i-STAT systems; most i-STAT users must report both Protime and INR for proficiency testing purposes. Also compatible with Coag-Sense systems where non-waived users must report both Protime and INR. Coag-Sense waived system users reporting only INR may consider CW product.

Item PT02370
QE Product Item PT02380

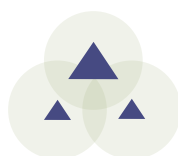
ANALYTES	CLIA REGULATED	UNREGULATED		
	• Protime (PT)	• INR		
2022 Ship Dates	February 14	June 6	September 12	Three shipments per year Five samples per shipment

INR - Coag-Sense - Waived Methods (CW)

Lyophilized samples intended for Coag-Sense (waived use).

Item PT02310
QE Product Item PT02315

ANALYTES	CLIA REGULATED	UNREGULATED		
		• INR		
2022 Ship Dates	February 14	September 12		Two shipments per year Three samples per shipment



HEMATOLOGY

Hematology samples are instrument-specific. Please use the table below to choose the correct sample/instrument combination.

	CBC OR CBC WITH AUTO DIFF							RETICULOCYTES		
	AF1	AF2	AF3	AF4	AF5	AS	AT	RT	RTB	RTS
Abbott CELL-DYN 1400, 1600, 1700, 1800, Emerald							X			
Abbott CELL-DYN 3000, 3200, 3500, 3700, 4000, Ruby	X									
Abbott Sapphire	X							X		
Abacus 5	X									
ABX Micros							X			
ABX Pentra 60, 80, 120		X								
ABX Pentra XLR								X		
Beckman Coulter AcT 5 diff		X								
Beckman Coulter AcT 8/10, AcT diff/diff2							X			
Beckman Coulter DxH 500 (Includes 520, 560)			X							
Beckman Coulter DxH600, DxH800, DxH900, HmX, LH 500, LH700 series, MAXM				X					X	
Manual Reticulocyte methods								X		
Medonic M series							X			
Siemens ADVIA 120/2120									X	
Siemens ADVIA 560	X									
Sysmex XS1000i					X					
Sysmex XE series, XT series, XN series, XN-L series					X					X
Sysmex KX-21N, poch 100i, XP-300						X				

HEMATOLOGY

Hematology - Comprehensive (AF)

Whole blood samples for automated instruments with 5-6 part differential.

	CLIA REGULATED	UNREGULATED
ANALYTES	<ul style="list-style-type: none"> Erythrocyte count (RBC) Hematocrit Hemoglobin 	<ul style="list-style-type: none"> Leukocyte count (WBC) Platelet count WBC differential, automated MCV IG% (AF5 only) IG# (AF5 only) MPV (AF4 and AF5 only) NRBC# (AF4 and AF5 only) RDW (AF4 and AF5 only)

2022 Ship Dates February 14 June 6 September 12 Three shipments per year
Five samples per shipment

AF1 Item PT02230
QE Product AF1 Item PT02240
AF2 Item PT02250
QE Product AF2 Item PT02260
AF3 Item PT02270
QE Product AF3 Item PT02280
AF4 Item PT02285
QE Product AF4 Item PT02286
AF5 Item PT02290
QE Product AF5 Item PT02300

NOTE: Item numbers are instrument-specific.
See Instrument Table on page 22.

Hematology - Limited Sysmex (AS)

Whole blood samples for Sysmex instruments with 2-3 part differential.

	CLIA REGULATED	UNREGULATED
ANALYTES	<ul style="list-style-type: none"> Erythrocyte count (RBC) Hematocrit Hemoglobin 	<ul style="list-style-type: none"> Leukocyte count (WBC) Platelet count WBC differential, automated MCV

2022 Ship Dates February 14 June 6 September 12 Three shipments per year
Five samples per shipment

Item PT02200
QE Product Item PT02210

NOTE: See Instrument Table on page 22.

Hematology - Limited (AT)

Whole blood samples for automated instruments with 2-3 part differential or no differential.

	CLIA REGULATED	UNREGULATED
ANALYTES	<ul style="list-style-type: none"> Erythrocyte count (RBC) Hematocrit Hemoglobin 	<ul style="list-style-type: none"> Leukocyte count (WBC) Platelet count WBC differential, automated MCV

2022 Ship Dates February 14 June 6 September 12 Three shipments per year
Five samples per shipment

Item PT02190
QE Product Item PT02195

NOTE: See Instrument Table on page 22.

HEMATOLOGY

Hematology - Cell Identification (XI)

Seven images (paper and online versions).

Item PT02220

NOTE: For laboratories reporting both automated differential and cell identification, only the automated differential score will be transmitted to accreditation agencies.

	CLIA REGULATED	UNREGULATED
ANALYTES	• Cell identification	• Cell identification, educational

2022 Ship Dates	February 14	June 6	September 12	Three shipments per year Five regulated and two educational challenges per shipment
-----------------	-------------	--------	--------------	--

Reticulocytes - Manual and Some Automated (RT)

Whole blood samples for manual methods and some automated instruments.

Item PT02420

QE Product Item PT02425

NOTE: See Instrument Table on page 22.

	CLIA REGULATED	UNREGULATED
ANALYTES		• Reticulocyte count, percent

2022 Ship Dates	February 14	September 12	Two shipments per year Three samples per shipment
-----------------	-------------	--------------	--

Reticulocytes - Beckman Coulter (RTB)

Whole blood samples for Beckman Coulter instruments.

Item PT02442

QE Product Item PT02444

NOTE: See Instrument Table on page 22.

	CLIA REGULATED	UNREGULATED
ANALYTES		• IRF • Reticulocyte count, absolute • Reticulocyte count, percent

2022 Ship Dates	February 14	September 12	Two shipments per year Three samples per shipment
-----------------	-------------	--------------	--

Reticulocytes - Sysmex (RTS)

Whole blood samples for Sysmex instruments.

Item PT02432

QE Product Item PT02434

NOTE: See Instrument Table on page 22.

	CLIA REGULATED	UNREGULATED
ANALYTES		• IRF • Reticulocyte count, absolute • Reticulocyte count, percent • Re-He

2022 Ship Dates	February 14	September 12	Two shipments per year Three samples per shipment
-----------------	-------------	--------------	--

HEMATOLOGY

Erythrocyte Sedimentation Rate (ESR) Instruments

ESR samples are instrument specific. Please use the table below to choose the correct sample/instrument combination.

INSTRUMENTS	SR	SRI	SRA
		X	
			X
	X		
ALCOR iSED and miniSED, Sysmex Alifax		X	
Polymedco Sedimat 15, ESR Stat Plus			X
ESR-Auto Plus and all others	X		

Sedimentation Rate (SR)

Whole blood samples intended for manual and automated erythrocyte sedimentation rate methods.

Item PT02450

QE Product Item PT02465

NOTE: See Instrument Table above.

CLIA REGULATED		UNREGULATED
ANALYTES		• Erythrocyte sedimentation rate
2022 Ship Dates	April 4	October 17
		Two shipments per year Three samples per shipment

Sedimentation Rate - iSED and Alifax (SRI)

Whole blood samples intended for the iSED ESR systems and Alifax.

Item PT02520

QE Product Item PT02525

NOTE: See Instrument Table above.

CLIA REGULATED		UNREGULATED
ANALYTES		• Erythrocyte sedimentation rate
2022 Ship Dates	April 4	October 17
		Two shipments per year Three samples per shipment

Sedimentation Rate - Polymedco Sedimat 15 and ESR Stat Plus (SRA)

Whole blood samples intended for Polymedco Sedimat 15 and ESR Stat Plus instruments.

Item PT02470

QE Product Item PT02485

NOTE: See Instrument Table above.

CLIA REGULATED		UNREGULATED
ANALYTES		• Erythrocyte sedimentation rate
2022 Ship Dates	April 4	October 17
		Two shipments per year Three samples per shipment

HEMATOLOGY

Fetal Red Cell Detection (HBF)

1mL whole blood samples intended for fetal maternal hemorrhage detection methods. Compatible with fetal rosette screen (qualitative) and Kleihauer-Betke stain (quantitative).

Item PT04350
QE Product Item PT04355

* Analyte(s) not yet accepted by the
CAP Laboratory Accreditation Program

	CLIA REGULATED	UNREGULATED
ANALYTES		<ul style="list-style-type: none">• Fetal Screen (qualitative) *• Hemoglobin F (quantitative) *

2022 Ship Dates April 25 October 31 Two shipments per year
Three samples per shipment

Hematocrit - Waived Methods (HW)

Liquid whole blood samples intended for use with waived hematocrit methods.

Item PT02150
QE Product Item PT02175

	CLIA REGULATED	UNREGULATED
ANALYTES		<ul style="list-style-type: none">• Hematocrit

2022 Ship Dates April 4 October 17 Two shipments per year
Three samples per shipment

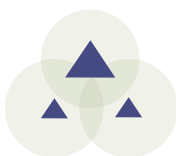
Sickle Cell Screen (SK)

Stabilized RBC samples compatible with solubility and electrophoresis methods.

Item PT02490
QE Product Item PT02515

	CLIA REGULATED	UNREGULATED
ANALYTES		<ul style="list-style-type: none">• Sickle cell screen

2022 Ship Dates April 4 October 17 Two shipments per year
Three samples per shipment



IMMUNOHEMATOLOGY



Blood Bank (Immunohematology) - Comprehensive (AB)

Five bar-coded 4mL whole blood samples and one 2mL whole blood donor sample for compatibility testing. Intended for use with manual and automated methods.

	CLIA REGULATED	UNREGULATED
ANALYTES	<ul style="list-style-type: none">• ABO group• Rh (D) typing• Unexpected antibody detection	<ul style="list-style-type: none">• Compatibility testing• Antibody identification

2022 Ship Dates February 28 June 13 October 10 Three shipments per year
Five samples per shipment

Item PT04120
QE Product Item PT04130

NOTE: Samples are NOT compatible with Olympus PK7200/7300 instruments.

Blood Bank (Immunohematology) - Limited (AB)

Five bar-coded 4mL whole blood samples. Intended for use with manual and automated methods.

	CLIA REGULATED	UNREGULATED
ANALYTES	<ul style="list-style-type: none">• ABO group• Rh (D) typing	

2022 Ship Dates February 28 June 13 October 10 Three shipments per year
Five samples per shipment

Item PT04140
QE Product Item PT04150

NOTE: Samples are NOT compatible with Olympus PK7200/7300 instruments.

Blood Bank Direct Antiglobulin Test (DAT)

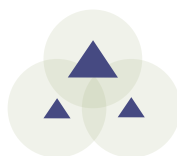
Three bar-coded 2mL whole blood samples for Direct Antiglobulin Testing. Intended for use with manual and automated methods.

	CLIA REGULATED	UNREGULATED
ANALYTES		<ul style="list-style-type: none">• DAT

2022 Ship Dates February 28 October 10 Two shipments per year
Three samples per shipment

Item PT04145

NOTE: Samples are NOT compatible with Olympus PK7200/7300 instruments.



IMMUNOLOGY

ANA Immunoserology (XN)

Item PT04000

0.6mL liquid samples compatible with EIA, IFA, and multiplex methods. Educational titer and pattern reporting available. Samples are NOT compatible with latex agglutination methods.

	CLIA REGULATED	UNREGULATED
ANALYTES	<ul style="list-style-type: none"> Antinuclear antibody, qualitative 	
2022 Ship Dates	January 18	May 16
		September 6
		Three shipments per year
		Five samples per shipment

ASO Immunoserology (XS)

Item PT04070

1mL liquid samples.

	CLIA REGULATED	UNREGULATED
ANALYTES	<ul style="list-style-type: none"> Antistreptolysin O (ASO), qualitative 	<ul style="list-style-type: none"> Antistreptolysin O (ASO), quantitative
2022 Ship Dates	January 18	May 16
		September 6
		Three shipments per year
		Five samples per shipment

CRP Immunoserology (XP)

Item PT04160

QE Product Item PT04185

1mL liquid samples intended for methods screening for non-specific inflammatory disease.

	CLIA REGULATED	UNREGULATED
ANALYTES		<ul style="list-style-type: none"> C-reactive protein, qualitative * C-reactive protein, quantitative
2022 Ship Dates	January 18	September 6
		Two shipments per year
		Three samples per shipment

NOTE: For high-sensitivity CRP methods, see Cardiac products on page 10.

* Analyte(s) not yet accepted by the CAP Laboratory Accreditation Program

Helicobacter pylori Serology (HL)

Item PT04010

0.5mL liquid samples.

	CLIA REGULATED	UNREGULATED
ANALYTES		<ul style="list-style-type: none"> Helicobacter pylori (total antibody)
2022 Ship Dates	January 18	September 6
		Two shipments per year
		Three samples per shipment

NOTE: For stool Helicobacter pylori, see HPSA product on page 39. For Urease, see Rapid Urease product on page 39.

IMMUNOLOGY

Hepatitis (YB)

1.5mL liquid samples. Compatible with traditional hepatitis methods and OraQuick HCV Rapid Antibody Test.

Item PT04190
Add-on to HV or HVC Item PT04195

	CLIA REGULATED	UNREGULATED
ANALYTES	<ul style="list-style-type: none"> • Anti-HBc, IgM • Anti-HBc (total antibody) • HBsAg 	<ul style="list-style-type: none"> • Anti-HAV, IgM • Anti-HBs • Anti-HCV

2022 Ship Dates January 18 May 16 September 6 Three shipments per year
Five samples per shipment

HIV Ag/Ab Combo (HVC)

1mL liquid samples. Compatible with Alere Determine HIV Combo rapid kit and automated combo assays used to detect HIV-1/2 antibody and HIV-1 p24 Antigen.

Item PT04064
QE Product Item PT04066

	CLIA REGULATED	UNREGULATED
ANALYTES	<ul style="list-style-type: none"> • Anti-HIV • Anti-HIV/p24 Antigen (not differentiated) 	<ul style="list-style-type: none"> • p24 Antigen

2022 Ship Dates January 18 May 16 September 6 Three shipments per year
Five samples per shipment

HIV Ag/Ab Combo - Waived Methods (HCW)

1mL liquid samples. Compatible with the waived Alere Determine HIV Combo rapid kit to detect HIV-1/2 antibody and HIV-1 p24 Antigen.

Item PT04164
QE Product Item PT04166

	CLIA REGULATED	UNREGULATED
ANALYTES		<ul style="list-style-type: none"> • Anti-HIV • p24 Antigen

2022 Ship Dates January 18 September 6 Two shipments per year
Three samples per shipment

NEW!

Anti-HIV (HV)

1mL liquid samples. Compatible with rapid and traditional testing methods used to test for Anti-HIV-1 or Anti-HIV-1/2 (antibody).

Item PT04020
QE Product Item PT04030

NOTE: For methods that also detect p24 Antigen, see HVC and HCW products above.

	CLIA REGULATED	UNREGULATED
ANALYTES	<ul style="list-style-type: none"> • Anti-HIV 	

2022 Ship Dates January 18 May 16 September 6 Three shipments per year
Five samples per shipment

IMMUNOLOGY

Anti-HIV - Waived Methods (HVW)

1mL liquid samples. Compatible with waived rapid kits used to test for Anti-HIV-1 or Anti-HIV-1/2 (antibody).

Item PT04040

QE Product Item PT04062

NOTE: For methods that also detect p24 Antigen, see HVC and HCW products on page 29.

ANALYTES	CLIA REGULATED	UNREGULATED
		• Anti-HIV

2022 Ship Dates January 18 September 6 Two shipments per year
Three samples per shipment

Immunoproteins (IMP)

1mL liquid samples.

Item PT04290

ANALYTES	CLIA REGULATED	UNREGULATED
	<ul style="list-style-type: none"> • Alpha-1 • Antitrypsin (AAT) • Complement C3 • Complement C4 	<ul style="list-style-type: none"> • IgA • IgE • IgG • IgM

2022 Ship Dates January 18 May 16 September 6 Three shipments per year
Five samples per shipment

Infectious Disease Serology (MMV)

0.5mL lyophilized serum samples.

Item PT04320

ANALYTES	CLIA REGULATED	UNREGULATED
		<ul style="list-style-type: none"> • Measles IgG, qualitative* • Measles IgM, qualitative • Mumps IgG, qualitative • Mumps IgM, qualitative • Varicella Zoster IgG, qualitative* • Varicella Zoster IgM, qualitative

* Analyte(s) not yet accepted by the CAP Laboratory Accreditation Program

2022 Ship Dates January 18 September 6 Two shipments per year
Three samples per shipment

Lyme Disease Serology (LY)

0.5mL liquid samples.

Item PT04200

ANALYTES	CLIA REGULATED	UNREGULATED
		<ul style="list-style-type: none"> • Lyme Disease Antibody, IgG • Lyme Disease Antibody, IgM • Lyme Disease Antibody, Total

2022 Ship Dates January 18 September 6 Two shipments per year
Three samples per shipment

IMMUNOLOGY

Mono Immunoserology (ZM)

Item PT04210

0.65mL liquid samples.

CLIA REGULATED		UNREGULATED	
ANALYTES	• Infectious mononucleosis		
2022 Ship Dates	January 18	May 16	September 6
Three shipments per year Five samples per shipment			

Mono Immunoserology - Waived Methods (MW)

Item PT04220

QE Product Item PT04245

0.65mL liquid samples.

CLIA REGULATED		UNREGULATED	
ANALYTES		• Infectious mononucleosis	
2022 Ship Dates	January 18	September 6	
Two shipments per year Three samples per shipment			

Mycoplasma Antibody (MP)

Item PT04300

0.5mL liquid samples. Compatible with kits that detect antibody to Mycoplasma pneumoniae.

CLIA REGULATED		UNREGULATED	
ANALYTES		• Mycoplasma antibody	
2022 Ship Dates	January 18	September 6	
Two shipments per year Three samples per shipment			

Rheumatoid Factor Immunoserology (ZR)

Item PT04250

Add-on to ZM Product Item PT04255

1mL liquid samples.

CLIA REGULATED		UNREGULATED	
ANALYTES	• Rheumatoid factor, qualitative	• Rheumatoid factor, quantitative • Rheumatoid factor, titer	
2022 Ship Dates	January 18	May 16	September 6
Three shipments per year Five samples per shipment			

Rubella Immunoserology (XU)

Item PT04260

1mL liquid samples.

CLIA REGULATED		UNREGULATED	
ANALYTES	• Rubella, qualitative (IgG)	• Rubella, quantitative (IgG)	
2022 Ship Dates	January 18	May 16	September 6
Three shipments per year Five samples per shipment			

IMMUNOLOGY

Rubella IgM Immunoserology (XM)

Item PT04330

0.5mL lyophilized serum samples. For Quality Assurance only; does not meet CMS Rubella requirements.

CLIA REGULATED		UNREGULATED
ANALYTES		• Rubella, qualitative (IgM)
2022 Ship Dates		January 18 September 6
		Two shipments per year Three samples per shipment

SARS-CoV-2 Serology (SCA)

Item PT04340

QE Product Item PT04345

1mL samples intended for antibody detection.

CLIA REGULATED		UNREGULATED
ANALYTES		• SARS-CoV-2 Total Antibody • SARS-CoV-2 IgG • SARS-CoV-2 IgM
2022 Ship Dates		January 18 September 6
		Two shipments per year Three samples per shipment

Syphilis Serology (SS)

Item PT04270

QE Product Item PT04280

1mL liquid samples intended for the quantitative and qualitative evaluation of antibody to *Treponema pallidum*. Intended for methods that evaluate serum specimens (RPR, VDRL, FTA, MHA-TP, TP-PA, EIA/ CIA, multiplex flow immunoassay, and rapid kits).

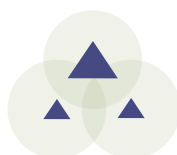
CLIA REGULATED		UNREGULATED
ANALYTES	• Syphilis Nontreponemal, qualitative • Syphilis Nontreponemal, quantitative • Syphilis Treponemal, qualitative	
2022 Ship Dates		January 18 May 16 September 6
		Three shipments per year Five samples per shipment

Thyroid Antibodies (THY)

Item PT04310

0.5mL liquid samples.

CLIA REGULATED		UNREGULATED
ANALYTES		• Thyroglobulin Antibody (Anti-TG), quantitative • Thyroid Peroxidase/Microsomal Antibody (Anti-TPO), quantitative
2022 Ship Dates		January 18 September 6
		Two shipments per year Three samples per shipment



MICROBIOLOGY

▲ Bacteriology

Microbiology CLIA requirements:

CLIA regulations require five proficiency testing challenges per event for each Microbiology sub-specialty. The sub-specialties are Bacteriology, Mycobacteriology, Mycology, Parasitology and Virology. All non-waived tests in a sub-specialty can be combined to meet the five challenges per event requirement.

Microbiology challenges tested with waived methods cannot be included with non-waived methods to meet the five challenges per event requirement.

Bacterial Antigens - for meningitis (BA)

Item PT05000

Samples for rapid antigen detection. Compatible with BD Directigen, Binax NOW, and Wellcogen.

	CLIA REGULATED	UNREGULATED
PROCEDURES ANTIGEN DETECTION	<ul style="list-style-type: none">• Group B Streptococci• Haemophilus influenzae type b• Neisseria meningitidis group A, C, Y, W135	<ul style="list-style-type: none">• Neisseria meningitidis group B or E. coli K1• Streptococcus pneumoniae
2022 Ship Dates	February 7	May 2
		September 26
		Three shipments per year Five samples per shipment

Bacterial Vaginosis Detection (BV)

Item PT05005

Samples for the detection of bacterial vaginosis intended for use with the OSOM BV BLUE Test kit.

	CLIA REGULATED	UNREGULATED
PROCEDURES		<ul style="list-style-type: none">• Bacterial vaginosis detection
2022 Ship Dates	April 18	October 10
		Two shipments per year Three samples per shipment

MICROBIOLOGY

▲ Bacteriology

Bacteriology - Comprehensive (MC)

Procedures listed are offered a minimum of two times per year. Culture samples are also compatible with molecular methods.

Item PT05030

NOTE: Group A Strep antigen samples are not compatible with Alere i Strep A. See WSM product on page 38.

	CLIA REGULATED	UNREGULATED
PROCEDURES	<ul style="list-style-type: none"> Anaerobic bacteria culture Antimicrobial susceptibility Blood culture C. difficile antigen and/or molecular Enteric pathogen identification Gram stain Group A Strep antigen detection Group A Strep culture 	<ul style="list-style-type: none"> Group B Strep culture Methicillin-resistant Staph aureus Miscellaneous culture N. gonorrhoeae culture Urine culture Vancomycin-resistant Enterococcus C. difficile toxin

2022 Ship Dates February 7 May 2 September 26 Three shipments per year
Nine samples per shipment

Bacteriology - Limited (MC)

Culture samples are also compatible with molecular methods.

Item PT05040

NOTE: Group A Strep antigen samples are not compatible with Alere i Strep A. See WSM product on page 38

	CLIA REGULATED	UNREGULATED
PROCEDURES (NUMBER/YEAR)	<ul style="list-style-type: none"> Anaerobic bacteria culture (1) Antimicrobial susceptibility (3) Blood culture (2) Gram stain (3) Group A Strep antigen detection (3) 	<ul style="list-style-type: none"> Group A Strep culture (3) N. gonorrhoeae culture (3) Urine culture (3) Wound culture (1)

2022 Ship Dates February 7 May 2 September 26 Three shipments per year
Five samples per shipment

MICROBIOLOGY

▲ Bacteriology

Bioterrorism Preparedness Exercise (BPE)

Item PT06010

This is an educational exercise intended to document QA/competency for biological emergency response situations. It provides surrogate organisms with characteristics that mimic potentially lethal pathogens. Scores are not transmitted to accreditation agencies.

State coordinators can arrange to enroll and fund their response network (sentinel) laboratories. They will receive copies of all reports for use in assessment and documentation of capacity, readiness, and training needs.

2022 Ship Dates March 14 October 17 Two shipments per year
Two samples per shipment

Blood Culture (CB)

Item PT05360

2 Sample Add-on Item PT05370

QE Product Item PT05365

Samples for blood culture and/or multiplex methods, including identification of bacteria and fungi.

NOTE: Item PT05370 can be added on to any other Bacteriology product.

	CLIA REGULATED	UNREGULATED
PROCEDURES	• Blood culture • Gram stain	

2022 Ship Dates February 7 May 2 September 26 Three shipments per year
Five samples per shipment

Bordetella by Molecular Methods (BOR)

Item PT05055

Intended for detection of *B. pertussis*, *B. parapertussis*, and/or *B. holmesii* by molecular methods.

	CLIA REGULATED	UNREGULATED
PROCEDURES		• Bordetella species detection

2022 Ship Dates April 18 October 24 Two shipments per year
Five samples per shipment

Carbapenem Resistance Detection (CR)

Item PT05330

QE Product Item PT05335

Samples for detection of Carbapenem-resistant organisms (CRO). Intended for molecular methods, including the Cepheid GeneXpert Carba-R.

	CLIA REGULATED	UNREGULATED
PROCEDURES		• IMP detection • KPC detection • NDM-1 detection • OXA-48 detection • VIM detection

2022 Ship Dates March 28 September 19 Two shipments per year
Five samples per shipment

MICROBIOLOGY

▲ Bacteriology

Clostridium difficile (CD)

Compatible with rapid antigen or toxin detection methods as well as molecular methods.

Item PT05060
QE Product Item PT05065

CLIA REGULATED		UNREGULATED	
PROCEDURES	<ul style="list-style-type: none">• C. difficile antigen detection• C. difficile molecular detection		<ul style="list-style-type: none">• C. difficile toxin detection
2022 Ship Dates	February 7	May 2	September 26
Three shipments per year Five samples per shipment			

CT/GC Detection (AC)

Liquid samples containing human DNA. Intended for molecular methods.

Item PT05070

CLIA REGULATED		UNREGULATED	
PROCEDURES	<ul style="list-style-type: none">• Chlamydia trachomatis detection• Neisseria gonorrhoeae detection		
2022 Ship Dates	February 7	May 2	September 26
Three shipments per year Five samples per shipment			

Enteric Pathogens (NP)

Each organism is presented at least once per year. Compatible with culture, molecular methods and rapid Campylobacter identification methods.

Item PT05080

NOTE: NOT compatible with Shiga Toxin testing methods (see SHG product on page 41).

CLIA REGULATED		UNREGULATED	
PROCEDURES	<ul style="list-style-type: none">• Aeromonas• Campylobacter• E. coli O157:H7• Plesiomonas	<ul style="list-style-type: none">• Salmonella• Shigella• Vibrio• Yersinia	
2022 Ship Dates	February 7	May 2	September 26
Three shipments per year Five samples per shipment			

MICROBIOLOGY

▲ Bacteriology

GI Multiplex (EP)

Item PT05380

Samples intended for gastrointestinal multiplex assays.

	CLIA REGULATED	UNREGULATED
PROCEDURES	<ul style="list-style-type: none"> • Adenovirus • Astrovirus • Campylobacter • Clostridium difficile • Escherichia coli (toxigenic) • Norovirus 	<ul style="list-style-type: none"> • Plesiomonas • Rotavirus • Salmonella • Sapovirus • Shigella • Vibrio • Yersinia • Cryptosporidium • Cyclospora • Entamoeba histolytica • Giardia
2022 Ship Dates	February 7	May 2
		September 26
		Three shipments per year Five samples per shipment

Gram Stain (GS)

Item PT05090

QE Product Item PT05100

Methanol-fixed slides for Gram staining.

	CLIA REGULATED	UNREGULATED
PROCEDURES	<ul style="list-style-type: none"> • Gram reaction 	<ul style="list-style-type: none"> • Organism morphology
2022 Ship Dates	February 7	May 2
		September 26
		Three shipments per year Five samples per shipment



MICROBIOLOGY

▲ Bacteriology

Group A Strep Antigen (Rapid Strep) (SA)

Samples for Group A Streptococci antigen detection (rapid strep).

CLIA REGULATED		UNREGULATED	
PROCEDURES	• Group A Strep antigen detection		
2022 Ship Dates	February 7	May 2	September 26
Three shipments per year Five samples per shipment			

Item PT05110
QE Product Item PT05120

NOTE: Group A strep antigen samples are not compatible with Alere i-Strep A.
See WSM product below.

Group A Strep Antigen (Rapid Strep) - Waived Methods (WS)

Intended for waived methods only.

CLIA REGULATED		UNREGULATED	
PROCEDURES		• Group A Strep antigen detection	
2022 Ship Dates	April 4	October 17	
Two shipments per year Three samples per shipment			

Item PT05130
QE Product Item PT05155

NOTE: Customers using molecular methods, see WSM product below.

Group A Strep Molecular - Waived Methods (WSM)

Intended for waived molecular methods only.

CLIA REGULATED		UNREGULATED	
PROCEDURES		• Group A Strep molecular detection	
2022 Ship Dates	April 18	October 10	
Two shipments per year Three samples per shipment			

Item PT05410
QE Product Item PT05415

Group A Strep (ST)

Samples for detection of Group A Streptococci. Compatible with culture and molecular methods.

CLIA REGULATED		UNREGULATED	
PROCEDURES	• Group A Strep		
2022 Ship Dates	February 7	May 2	September 26
Three shipments per year Five samples per shipment			

Item PT05170

MICROBIOLOGY

▲ Bacteriology

Group B Strep / *Neisseria gonorrhoeae* (SB)

Samples for detection of Group B Streptococci by culture or molecular methods and/or *N. gonorrhoeae* by culture.

Item PT05180

QE Product Item PT05185

PROCEDURES	CLIA REGULATED	UNREGULATED		
	• Group B Strep • <i>Neisseria gonorrhoeae</i>			
2022 Ship Dates	February 7	May 2	September 26	Three shipments per year Five samples per shipment

Helicobacter pylori Antigen, Stool (HPSA)

0.5mL liquid samples intended for the qualitative evaluation of *Helicobacter pylori* antigen in stool specimens.

Item PT05400

NOTE: For serum *Helicobacter pylori*, see HL product on page 28.

* Analyte(s) not yet accepted by the CAP Laboratory Accreditation Program

PROCEDURES	CLIA REGULATED	UNREGULATED		
		• <i>Helicobacter pylori</i> antigen detection *		
2022 Ship Dates	April 18	October 10		Two shipments per year Two samples per shipment

Helicobacter pylori - Rapid Urease (RUR)

Simulated gastric biopsy samples on paper disks. Intended for use with CLOtest, PyloriTek, or similar methods.

Item PT05500

NOTE: For serum *Helicobacter pylori*, see HL product on page 28.

* Analyte(s) not yet accepted by the CAP Laboratory Accreditation Program

ANALYTES	CLIA REGULATED	UNREGULATED		
		• Urease *		
2022 Ship Dates	April 18	October 10		Two shipments per year Three samples per shipment

Legionella Antigen (LGA)

0.5mL liquid samples for *Legionella* Antigen detection methods in urine.

2 Sample Add-on Item PT05440

NOTE: Item PT05440 can only be ordered when added to another Bacteriology product.

ANALYTES	CLIA REGULATED	UNREGULATED		
	• <i>Legionella</i> Antigen			
2022 Ship Dates	February 7	May 2	September 26	Three shipments per year Two samples per shipment

MICROBIOLOGY

▲ Bacteriology

Meningitis Multiplex (MEP)

Item PT05450

Samples intended for meningitis multiplex assays.

ANALYTES	CLIA REGULATED		UNREGULATED	
	<ul style="list-style-type: none">• Cytomegalovirus (CMV)• Enterovirus (EV)• Escherichia coli K1• Haemophilus influenzae• Herpes simplex virus 1 (HSV-1)• Herpes simplex virus 2 (HSV-2)• Human herpesvirus 6 (HHV-6)	<ul style="list-style-type: none">• Human parechovirus (HPeV)• Listeria monocytogenes• Neisseria meningitidis• Streptococcus agalactiae• Streptococcus pneumoniae• Varicella zoster virus (VZV)	<ul style="list-style-type: none">• Cryptococcus neoformans/gattii	
2022 Ship Dates February 7 May 2 September 26 Three shipments per year Five samples per shipment				

MRSA / VRE (MR)

Item PT05200

QE Product Item PT05210

Compatible with culture and molecular methods. NOT intended for methods that screen for specific VRE genes (vanA, vanB, etc.).

PROCEDURES	CLIA REGULATED		UNREGULATED	
	<ul style="list-style-type: none">• Staphylococcus aureus• Methicillin-resistant S. aureus• Vancomycin-resistant Enterococcus			
2022 Ship Dates February 7 May 2 September 26 Three shipments per year Five samples per shipment				

Mycoplasma genitalium Molecular (MG)

Item PT05460

Samples for molecular detection of Mycoplasma genitalium.

PROCEDURES	CLIA REGULATED		UNREGULATED	
			<ul style="list-style-type: none">• M. genitalium detection	
2022 Ship Dates April 18 October 10 Two shipments per year Three samples per shipment				

MICROBIOLOGY

▲ Bacteriology

Shiga Toxin (SHG)

Item PT05240

Samples for Shiga Toxin 1 and/or 2 and undifferentiated detection methods. Compatible with rapid antigen detection and molecular methods.

CLIA REGULATED		UNREGULATED
PROCEDURES		<ul style="list-style-type: none">• Shiga toxin 1 detection• Shiga toxin 2 detection• Shiga toxin undifferentiated
2022 Ship Dates	April 18	October 10
		Two shipments per year Three samples per shipment

Throat/Urine Bacteriology (TU)

Item PT05250

Samples for urine culture, Group A Streptococci culture, and Group A Streptococci antigen detection (rapid strep).

NOTE: Group A strep antigen samples are not compatible with Alere i Strep A
See WSM product on page 38.

CLIA REGULATED		UNREGULATED
PROCEDURES (NUMBER/ SHIPMENT)	<ul style="list-style-type: none">• Antimicrobial susceptibility (1)• Gram stain (1)• Group A Strep antigen detection (2)	<ul style="list-style-type: none">• Group A Strep culture (2)• Urine culture (3)
2022 Ship Dates	February 7	May 2
		September 26
		Three shipments per year Seven samples per shipment

Throat/Urine Bacteriology - Limited (TU)

Item PT05260

Samples for urine culture and Group A Streptococci culture.

CLIA REGULATED		UNREGULATED
PROCEDURES (NUMBER/ SHIPMENT)	<ul style="list-style-type: none">• Antimicrobial susceptibility (1)• Gram stain (1)	<ul style="list-style-type: none">• Group A Strep culture (2)• Urine culture (3)
2022 Ship Dates	February 7	May 2
		September 26
		Three shipments per year Five samples per shipment

Urine Culture (UC)

Item PT05270

Samples for urine culture.

CLIA REGULATED		UNREGULATED
PROCEDURES (NUMBER/ SHIPMENT)	<ul style="list-style-type: none">• Antimicrobial susceptibility (1)	<ul style="list-style-type: none">• Gram stain (1)• Urine culture (5)
2022 Ship Dates	February 7	May 2
		September 26
		Three shipments per year Five samples per shipment

MICROBIOLOGY

▲ Bacteriology

Vaginal Pathogens (VP)

Intended for use with the BD Affirm VPIII.

Item PT05280
QE Product Item PT05290

	CLIA REGULATED	UNREGULATED
PROCEDURES	<ul style="list-style-type: none">• Gardnerella detection	<ul style="list-style-type: none">• Candida detection• Trichomonas detection
2022 Ship Dates	February 7	May 2
		September 26
		Three shipments per year Five samples per shipment

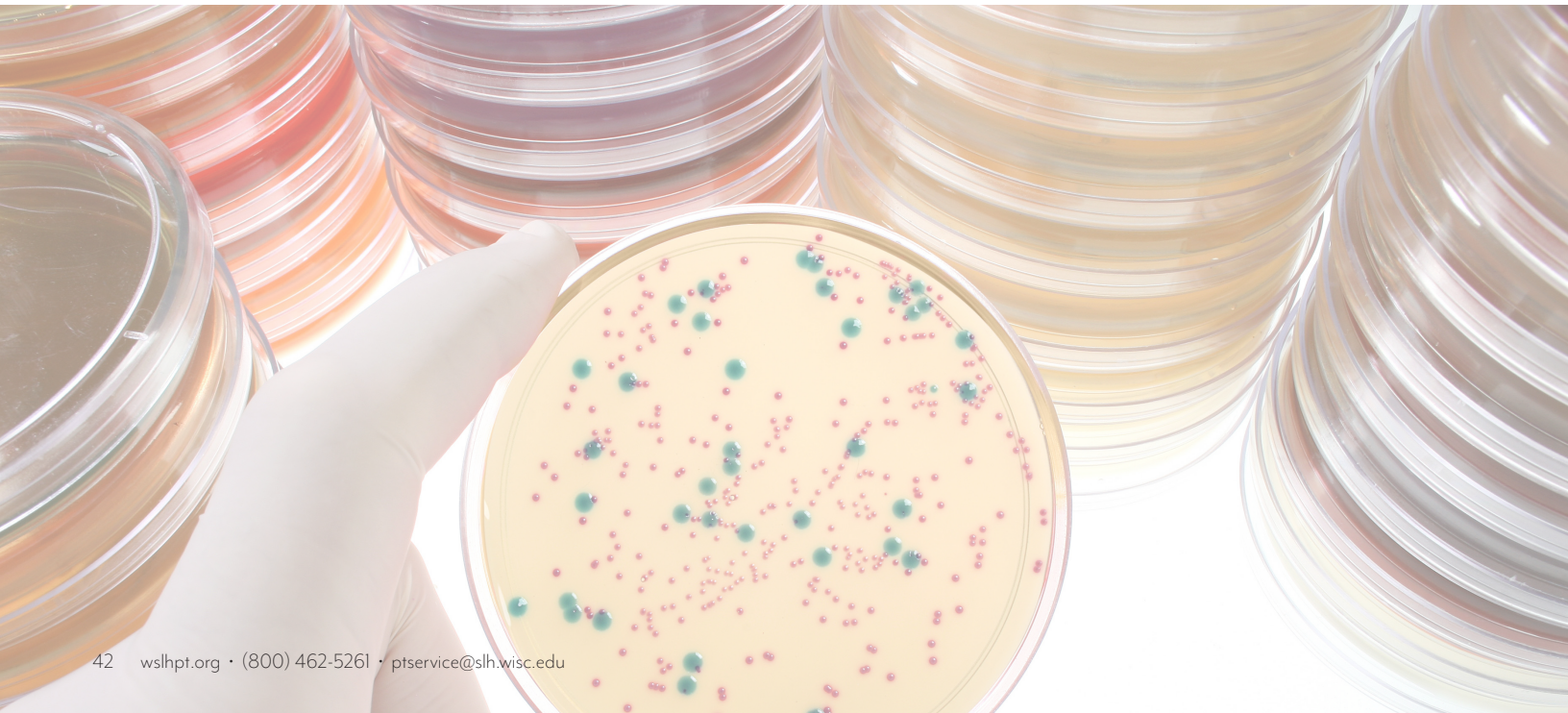
VP Molecular (VPM)

Item PT05470

Samples for detection of vaginal pathogens via molecular methods. Compatible with BD MAX and Aptima Vaginal Panels.

	CLIA REGULATED	UNREGULATED
PROCEDURES		<ul style="list-style-type: none">• Bacterial vaginosis detection• Candida detection• Trichomonas detection
2022 Ship Dates	February 7	May 2
		September 26
		Three shipments per year Five samples per shipment

MICRO-BACTERIOLOGY



MICROBIOLOGY

▲ Mycobacteriology

Acid-Fast Stain (MA)

Intended for reporting the presence or absence of acid-fast bacilli.

Item PT06000

Add-on to MB (below) Item PT06005

	CLIA REGULATED	UNREGULATED
PROCEDURES	• Acid-fast stain	

2022 Ship Dates	March 28	September 19	Two shipments per year Five samples per shipment
------------------------	----------	--------------	---

Mycobacteriology Culture (MB)

Samples for Mycobacterium species culture.

Item PT06060

	CLIA REGULATED	UNREGULATED
PROCEDURES	• Mycobacteria culture	

2022 Ship Dates	March 28	September 19	Two shipments per year Five samples per shipment
------------------------	----------	--------------	---

M. tuberculosis by Molecular Methods (TB)

Intended for Mycobacterium tuberculosis detection by molecular methods. Includes detection of Rifampin resistance.

Item PT06050

QE Product Item PT06055

	CLIA REGULATED	UNREGULATED
PROCEDURES		• M. tuberculosis detection • Rifampin resistance screen

2022 Ship Dates	March 28	September 19	Two shipments per year Five samples per shipment
------------------------	----------	--------------	---

MICROBIOLOGY

▲ Mycology

KOH Slides (KOH)

Item PT06230

Slides for KOH/calcofluor white preparations.

CLIA REGULATED		UNREGULATED	
PROCEDURES		• KOH Preparation	
2022 Ship Dates	April 18	October 10	Two shipments per year Three samples per shipment

Mycology - Comprehensive (MY)

Item PT06070

Samples for comprehensive fungal culture including yeast, dermatophytes, and aerobic actinomycete identification.

CLIA REGULATED		UNREGULATED	
PROCEDURES	• Aerobic Actinomycetes identification • Mold, yeast, and yeast-like organism identification		
2022 Ship Dates	February 7	May 2	September 26 Three shipments per year Five samples per shipment

Mycology - Cryptococcal Antigen (MYC)

Item PT06080

Simulated CSF samples for cryptococcal antigen detection.

CLIA REGULATED		UNREGULATED	
PROCEDURES		• Cryptococcal antigen detection	
2022 Ship Dates	February 7	May 2	September 26 Three shipments per year Five samples per shipment

Mycology - Dermatophyte (DM)

Item PT06090

Two reporting options: 1) Qualitative - Designed for laboratories or dermatology offices reporting the presence or absence of dermatophytes. Compatible with Dermatophyte Test Medium [DTM] or non-specialized and non-differential mycology media. 2) Identification - Designed for laboratories or dermatology offices identifying dermatophytes to a genus or species level.

CLIA REGULATED		UNREGULATED	
PROCEDURES	• Dermatophyte identification to genus or species level (Identification)	• Dermatophyte screen by culture (Qualitative)	
2022 Ship Dates	February 7	May 2	September 26 Three shipments per year Five samples per shipment

MICROBIOLOGY

▲ Mycology

India Ink (IND)

Item PT06105

Liquid samples to detect presence or absence of encapsulated yeast using India Ink methods.

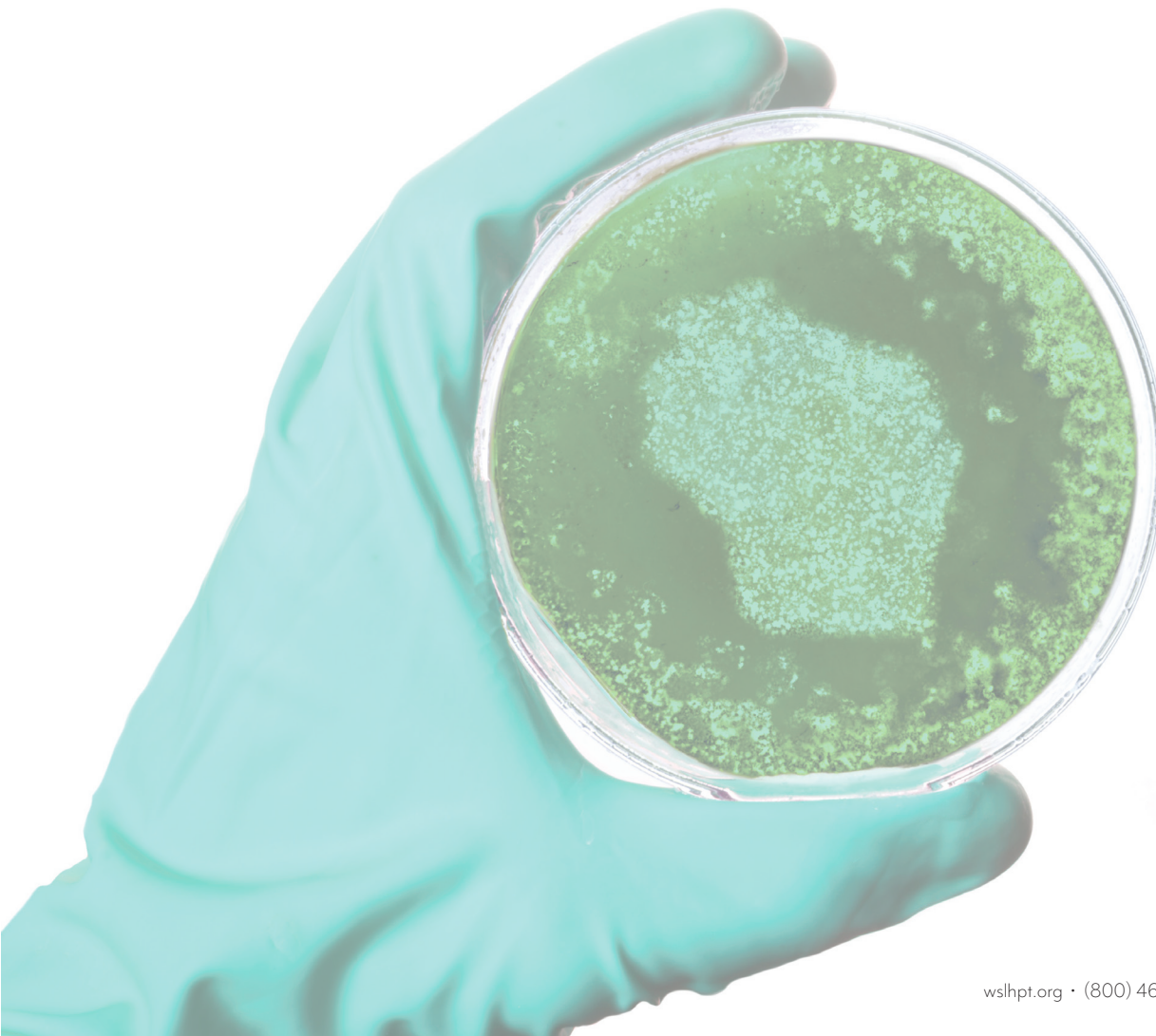
	CLIA REGULATED	UNREGULATED
PROCEDURES		• India Ink
2022 Ship Dates	April 18 October 10	Two shipments per year Three samples per shipment

Mycology - Yeast (YE)

Item PT06100

Samples for yeast culture. Not intended for wet mount preparations.

	CLIA REGULATED	UNREGULATED
PROCEDURES	• Yeast and yeast-like organism identification	
2022 Ship Dates	February 7 May 2 September 26	Three shipments per year Five samples per shipment



MICROBIOLOGY

▲ Parasitology

Blood Parasites (PAB)

Item PT06020

Samples include giemsa-stained smears and/or photomicrographs of thick and thin blood smears.

CLIA REGULATED		UNREGULATED	
PROCEDURES	<ul style="list-style-type: none">• Anaplasma species• Babesia species• Ehrlichia species• Filarial worms	<ul style="list-style-type: none">• Plasmodium species• Trypanosoma species	
2022 Ship Dates	February 7	May 2	September 26
Three shipments per year Five samples per shipment			

Giardia/Cryptosporidium Antigen Detection (GI)

Item PT06030

Formalin-preserved samples for Giardia/Cryptosporidium detection. Samples are not compatible with Triage devices. Intended for laboratories performing Giardia/Cryptosporidium screening on stool samples.

CLIA REGULATED		UNREGULATED	
PROCEDURES	<ul style="list-style-type: none">• Giardia/Cryptosporidium antigen detection		
2022 Ship Dates	February 7	May 2	September 26
Three shipments per year Five samples per shipment			

Parasitology - Comprehensive (PA)

Item PT06110

Sample types include formalin-preserved stool, zinc-PVA stool smears, and blood parasite smears/photomicrographs. Samples are not compatible with Triage devices. Intended for Level 2 laboratories (as defined by CLIA '88) performing full O&P identification of stool specimens.

CLIA REGULATED		UNREGULATED	
PROCEDURES	<ul style="list-style-type: none">• Blood parasite identification• Giardia/Cryptosporidium antigen detection• Modified acid-fast stain• Permanent stain• Stool wet mount		
2022 Ship Dates	February 7	May 2	September 26
Three shipments per year Six samples per shipment			

MICROBIOLOGY

▲ Parasitology

Trichomonas Molecular (TVM)

Item PT05320

Liquid samples for molecular detection of Trichomonas.

	CLIA REGULATED	UNREGULATED
PROCEDURES		• Trichomonas detection
2022 Ship Dates	April 18 October 10	Two shipments per year Three samples per shipment

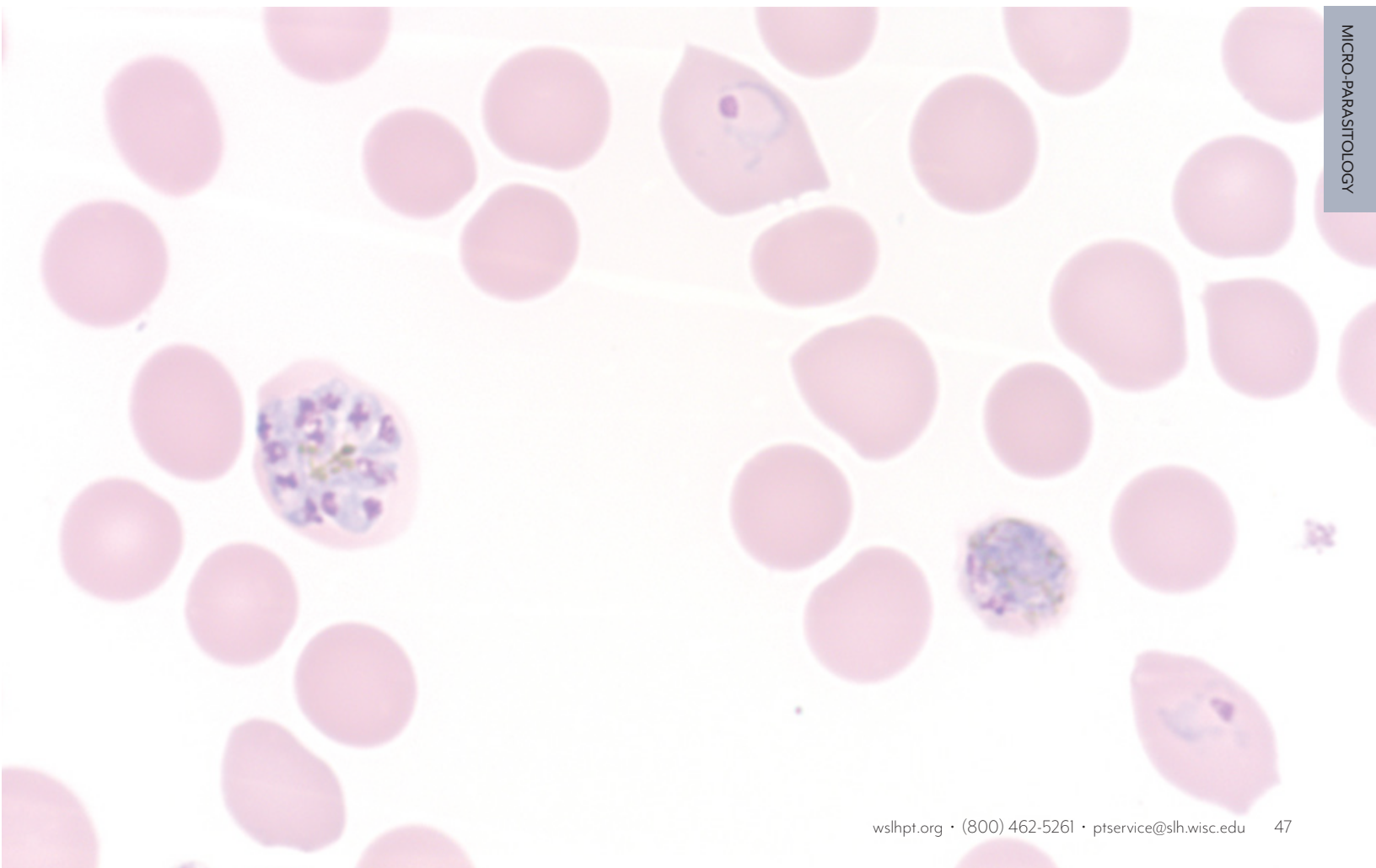
Trichomonas OSOM (TV)

Item PT05310

QE Product Item PT05315

Samples for detection of Trichomonas intended for use with OSOM Trichomonas Rapid Test.

	CLIA REGULATED	UNREGULATED
PROCEDURES		• Trichomonas detection
2022 Ship Dates	April 18 October 10	Two shipments per year Three samples per shipment



MICROBIOLOGY

▲ Virology

HPV Molecular (HPV)

Item PT06250

1mL liquid samples intended for molecular detection of Human Papillomavirus.

CLIA REGULATED		UNREGULATED	
ANALYTES	• HPV	• HPV Genotyping	
2022 Ship Dates	February 7	May 2	September 26
Three shipments per year Five samples per shipment			

HSV Molecular (HSV)

Item PT06220

1mL liquid samples intended for molecular detection of Herpes Simplex Virus (HSV) 1 & 2.

CLIA REGULATED		UNREGULATED	
ANALYTES	• HSV 1	• HSV 2	
2022 Ship Dates	February 7	May 2	September 26
Three shipments per year Five samples per shipment			

Rabies (RA)

Dual impressions on Teflon-coated slides.

DFA Method Item PT06130
dRIT Method Item PT06140
QE Product DFA Method Item PT06137
QE Product dRIT Method Item PT06147

CLIA REGULATED		UNREGULATED	
ANALYTES		• Rabies Antigen	
2022 Ship Dates	April 18	October 24	
Two shipments per year Five samples per shipment			

Respiratory Multiplex (RP)

Samples intended for molecular respiratory multiplex assays.

Item PT06240
QE Product Item PTO6244

NOTE: For methods that detect SARS/
Influenza or SARS/Influenza/RSV, see
CM and CMW products on page 49.

CLIA REGULATED		UNREGULATED	
ANALYTES	• Adenovirus • Bordetella • Chlamydomphila pneumoniae • Coronavirus • Human metapneumovirus • Influenza	• Mycoplasma pneumoniae • Parainfluenza • Respiratory syncytial virus (RSV) • Rhinovirus/ Enterovirus	• SARS-CoV-2
2022 Ship Dates	February 7	May 2	September 26
Three shipments per year Five samples per shipment			

MICROBIOLOGY

▲ Virology

SARS-CoV-2 Antigen (CVW)

Swabs intended for antigen tests targeting the SARS-CoV-2 nucleoprotein.

Item PT06290

QE Product Item PT06295

CLIA REGULATED		UNREGULATED
ANALYTES		• SARS-CoV-2
2022 Ship Dates		May 2 September 26
		Two shipments per year Three samples per shipment

SARS-CoV-2 Molecular Liquid (CLM)

1mL liquid samples for molecular detection of SARS-CoV-2 (whole genome). Intended for analyzer assays such as BD, Hologic, and Roche.

Item PT06300

QE Product Item PT06305

NEW!

CLIA REGULATED		UNREGULATED
ANALYTES		• SARS-CoV-2
2022 Ship Dates		May 2 September 26
		Two shipments per year Three samples per shipment

SARS/Viral Molecular - 5 samples (CM)

Swabs with 1.5mL elution liquid intended for molecular detection of SARS-CoV-2 (whole genome), Influenza, and RSV. Can be used for multi-analyte SARS/Viral methods or single SARS methods.

Item PT06270

QE Product Item PT06275

ENHANCED

CLIA REGULATED		UNREGULATED
ANALYTES	• Influenza A • Influenza B	• RSV • SARS-CoV-2
2022 Ship Dates		February 7 May 2 September 26
		Three shipments per year Five samples per shipment

SARS/Viral Molecular - 3 Samples (CMW)

Swabs with 1.5mL elution liquid intended for molecular detection of SARS-CoV-2 (whole genome) as well as waived Influenza and RSV methods. Can be used for multi-analyte SARS/Viral methods or single SARS methods.

Item PT06280

QE Product Item PT06285

ENHANCED

CLIA REGULATED		UNREGULATED
ANALYTES		• Influenza A • Influenza B
		• RSV • SARS-CoV-2
2022 Ship Dates		May 2 September 26
		Two shipments per year Three samples per shipment

MICROBIOLOGY

▲ Virology

Viral - Limited (VA)

1mL liquid samples for rapid antigen test kits or molecular methods.

Item PT06150
QE Product Item PT06160

CLIA REGULATED		UNREGULATED	
ANALYTES	<ul style="list-style-type: none">• Adenovirus• Influenza A	<ul style="list-style-type: none">• Influenza B• RSV	
2022 Ship Dates	February 7	May 2	September 26
Three shipments per year Five samples per shipment			

Viral with Rotavirus (VA)

1mL liquid samples for rapid antigen test kits or molecular methods.

Item PT06200
QE Product Item PT06210

NOTE: Customers not testing Rotavirus,
choose Limited product above.

CLIA REGULATED		UNREGULATED	
ANALYTES	<ul style="list-style-type: none">• Adenovirus• Influenza A• Influenza B	<ul style="list-style-type: none">• RSV• Rotavirus	
2022 Ship Dates	February 7	May 2	September 26
Three shipments per year Five samples per shipment			

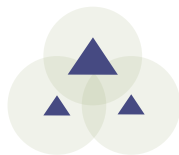
Viral - Waived Methods (VCW)

1mL liquid samples for rapid antigen test kits or molecular methods.

Item PT06170
QE Product Item PT06195

* Analyte(s) not yet accepted by the
CAP Laboratory Accreditation Program

CLIA REGULATED		UNREGULATED	
ANALYTES		<ul style="list-style-type: none">• Adenovirus *• Influenza A	<ul style="list-style-type: none">• Influenza B• RSV
2022 Ship Dates	May 2	September 26	
Two shipments per year Three samples per shipment			



URINALYSIS/MICROSCOPY/MISC

Amniotic Fluid Detection (AE)

Item PT03000
QE Product Item PT03025

0.4mL liquid samples for detecting the presence/absence of fluid from ruptured fetal membranes.
Intended for use with the Actim PROM, AmniSure ROM, Clinical Innovations ROM Plus, and PartoSure.

CLIA REGULATED		UNREGULATED
ANALYTES		• Rupture of fetal membranes
2022 Ship Dates	May 31 October 24	Two shipments per year Two samples per shipment

Body Fluid Cell Count (BFA & BFM)

Automated cell count (BFA) Item PT03030
Manual cell count (BFM) Item PT03040
QE Product BFA Item PT03037

Clear, protein-based, liquid samples intended for labs performing body fluid cell counts by automated or manual methods. These samples are NOT compatible with the IRIS IQ200.

CLIA REGULATED		UNREGULATED
ANALYTES		• RBC • WBC
2022 Ship Dates	April 4 October 17	Two shipments per year Three samples per shipment

Body Fluid Microscopy (BF)

Item PT03050

Three images (paper and online versions) that include crystal(s) and/or cell identification(s) found in miscellaneous fluids (e.g., synovial, spinal, pleural). A synovial fluid crystal identification will be provided in one of the three images per event.

CLIA REGULATED		UNREGULATED
ANALYTES		• Cell identification • Crystal identification
2022 Ship Dates	April 4 October 17	Two shipments per year Three samples per shipment

Fecal Lactoferrin (LF)

Item PT03060

0.5mL liquid samples compatible with the LEUKO-TEST, LEUKO EZ VUE, IBD-Chek, and IBD EZ VUE methods.

CLIA REGULATED		UNREGULATED
ANALYTES		• Lactoferrin
2022 Ship Dates	April 4 October 17	Two shipments per year Three samples per shipment

URINALYSIS/MICROSCOPY/MISC

Fecal Occult Blood (OC)

Item PT03070
QE Product Item PT03095

Simulated fecal samples compatible with FOB (slide), iFOB, and automated systems.

CLIA REGULATED		UNREGULATED
ANALYTES		• Occult blood (fecal)
2022 Ship Dates		April 4 October 17
		Two shipments per year Three samples per shipment

Fetal Fibronectin (FFN)

Item PT03100

1mL liquid simulated cervicovaginal samples.

CLIA REGULATED		UNREGULATED
ANALYTES		• Fetal fibronectin
2022 Ship Dates		May 31 October 24
		Two shipments per year Three samples per shipment

Gastric Occult Blood (GO)

Item PT03110
QE Product Item PT03135

Liquid samples intended for Beckman Coulter Gastrocult slides and Aerscher HemaPrompt FG slides.

CLIA REGULATED		UNREGULATED
ANALYTES		• Occult blood (gastric) • pH (Gastrocult slides)
2022 Ship Dates		April 4 October 17
		Two shipments per year Three samples per shipment

NOTE: For body fluid pH other than Beckman Coulter Gastrocult slides, see PC or PH product on page 12.

URINALYSIS/MICROSCOPY/MISC

Point of Care / PPMP Package (POC)

Combination of five commonly ordered tests in one convenient package. QE products are available as a package (all five modules) or may be ordered individually.

Whole Blood Glucose QE products include reporting for up to 20 result sets.

Package Item PT03400

QE Product Package Item PT03405

QE Product OC only Item PT03097

QE Product WS only Item PT05152

QE Product PM only Item PT03187

QE Product UR only Item PT03277

QE Product WBG only Item PT01895

	CLIA REGULATED	UNREGULATED
ANALYTES		
Fecal Occult Blood (OC) 3 samples		<ul style="list-style-type: none"> • Occult blood (fecal)
Group A Strep Antigen - waived methods (WS) 3 samples		<ul style="list-style-type: none"> • Group A Strep antigen detection
PPMP (PM) 2 images each procedure (paper & online versions)		<ul style="list-style-type: none"> • Fecal smear for leukocytes • Fern test • KOH (skin & vaginal) • Nasal smear for eosinophils • Pinworm preparation • Urine sediment • Vaginal wet preparation
Urinalysis/ Urine hCG (UR) 3 samples		<ul style="list-style-type: none"> • Bilirubin • Bilirubin - Tablet test • Glucose • hCG, urine – qualitative • Hemoglobin/Blood • Ketones • Ketones - Tablet test • Leukocyte esterase • Nitrites • pH • Protein • Specific gravity • Urobilinogen
Whole Blood Glucose (WBG) 3 samples		<ul style="list-style-type: none"> • Whole Blood Glucose

2022 Ship Dates April 4

October 17

Two shipments per year
Two/three challenges per shipment

URINALYSIS / MICROSCOPY / MISC

Provider Performed Microscopy (PM)

Two images (paper and online versions) for each of the procedures listed below.

	CLIA REGULATED	UNREGULATED
ANALYTES		<ul style="list-style-type: none"> • Fecal smear for leukocytes • Fern test • KOH (skin & vaginal) • Nasal smear for eosinophils • Pinworm preparation • Urine sediment • Vaginal wet preparation
2022 Ship Dates April 4 October 17 Two shipments per year Two challenges per procedure		

Item PT03170

QE Product Item PT03195

NOTE: Online PPM Competency is also available on page 60.

Urinalysis / Urine hCG (UR)

Liquid samples for urinalysis and urine pregnancy.

	CLIA REGULATED	UNREGULATED
ANALYTES		<ul style="list-style-type: none"> • Bilirubin • Bilirubin - Tablet test • Glucose • hCG, urine – qualitative • Hemoglobin/Blood • Ketones • Ketones - Tablet test • Leukocyte esterase • Nitrites • pH • Protein • Specific gravity • Urobilinogen
2022 Ship Dates April 4 October 17 Two shipments per year Three samples per shipment		

Item PT03260

QE Product Item PT03285

NOTE: For serum hCG see CET and HCG products on page 14.

Urine hCG - 5 Samples (UH)

Liquid samples for urine pregnancy.

	CLIA REGULATED	UNREGULATED
ANALYTES		<ul style="list-style-type: none"> • hCG, urine – qualitative
2022 Ship Dates April 4 October 17 Two shipments per year Five samples per shipment		

Item PT03290

QE Product Item PT03315

NOTE: For serum hCG see CET and HCG products on page 14.

URINALYSIS/MICROSCOPY/MISC

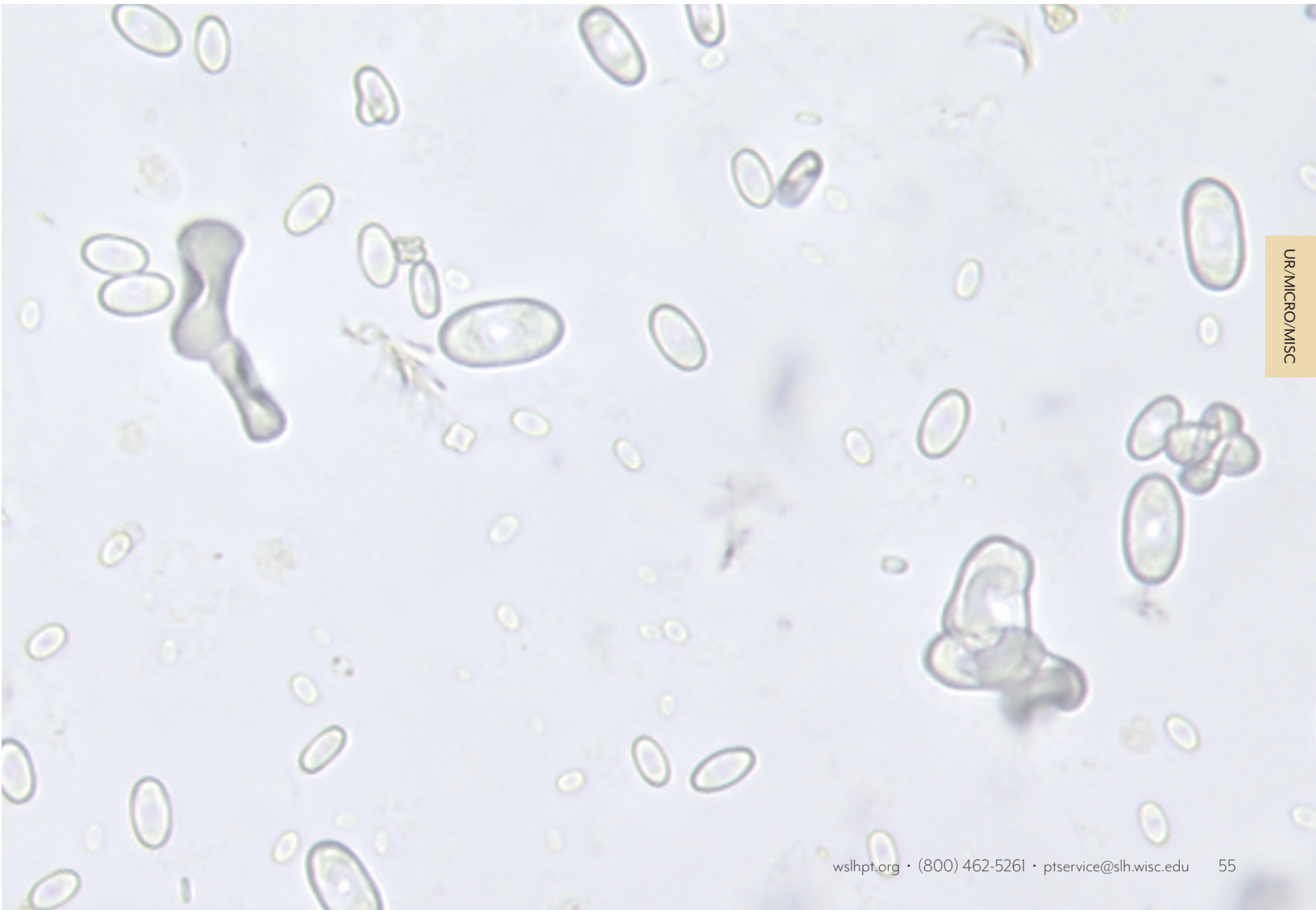
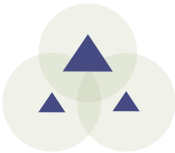
Urine Sediment Identification (SU)

Item PT03320
QE Product Item PT03345

Two images (paper and online versions) for the identification of urine sediment components.

CLIA REGULATED		UNREGULATED
ANALYTES		• Urine sediment component identification

2022 Ship Dates	April 4	October 17	Two shipments per year Two challenges per shipment
-----------------	---------	------------	---



UR/MICRO/MISC

ANDROLOGY

Post-Vasectomy Semen Analysis (PV)

Item PT03140

1mL stabilized liquid sperm samples for post-vasectomy presence/absence screening and sperm count.
Compatible with manual and automated methods.

	CLIA REGULATED	UNREGULATED
ANALYTES		<ul style="list-style-type: none">• Sperm count, qualitative (manual)• Sperm count, qualitative (automated)• Sperm count, quantitative (manual) *• Sperm count, quantitative (automated)
2022 Ship Dates	May 31	October 24
		Two shipments per year Two samples per shipment

* Analyte(s) not yet accepted by the
CAP Laboratory Accreditation Program

Sperm Count (SP)

Item PT03200

1mL stabilized liquid sperm samples. Compatible with manual and automated methods.

	CLIA REGULATED	UNREGULATED
ANALYTES		<ul style="list-style-type: none">• Sperm count, quantitative (manual)• Sperm count, quantitative (automated) *
2022 Ship Dates	May 31	October 24
		Two shipments per year Two samples per shipment

* Analyte(s) not yet accepted by the
CAP Laboratory Accreditation Program

Sperm Morphology (SM & SMS)

Unstained slide (SM) Item PT03210
Pre-stained slide (SMS) Item PT03220

Slide and image for percent normal and morphology assessment. Pre-stained slide is stained with modified Papanicolaou.

	CLIA REGULATED	UNREGULATED
ANALYTES		<ul style="list-style-type: none">• Sperm morphology
2022 Ship Dates	May 31	October 24
		Two shipments per year One slide & image per shipment

ANDROLOGY

Sperm Motility (MOT)

Item PT03230

Web-based videos of two semen samples with multiple microscopic fields showing live and immobilized sperm.

ANALYTES	CLIA REGULATED	UNREGULATED
		<ul style="list-style-type: none">• Sperm motility• Sperm progressive motility
2022 Ship Dates May 31 October 24 Two shipments per year Two videos per shipment		



ONLINE TRAINING & COMPETENCY

WSLH Proficiency Testing has partnered with Medical Training Solutions (MTS) at the University of Washington to bring you customizable Online Training & Competency. [View a demo video](#) or [submit an order form](#) online at wslhpt.org.



Clinical Laboratory

Track training and competency of staff involved in all phases of laboratory testing: specimen collection, transport, processing and analysis.



Point of Care

Administer and track competency tests for staff using microscopes, waived test kits, and instruments at the point of care.



Specimen Collection

Track and document training and competency assessment for specimen collection staff.

WSLH PT is pleased to offer our customers online training and competency assessment for the clinical laboratory and point of care through Medical Training Solutions (MTS).

These programs are used by over 1500 laboratories and feature:

- Streamlined tracking and documentation
- High quality multimedia content developed with the University of Washington
- Over 50 hour of Continuing Education (CE) credit
- Create your own tests
- Upload and track your existing documents

The MTS Training and Competency features:

- High quality digital images
- New questions in each Competency topic are published biannually
- Simple test interfaces - multiple choice format that is easy to navigate
- Automated email notifications - one click sends reminders to your staff
- Automated login for test takers - email notifications provide an auto login link Test taker simply clicks on this link to go directly to their assignments menu
- Real time monitoring of test completions and documentation for inspectors - use the reporting feature to track progress and to generate printable reports

ORDER OPTIONS

All order options include access for up to 30 individuals. Please consult the price list for additional fees for more than 30 users.

Order Options for Training Courses and Competency Tests

- BEST OPTION -

Receive All Training Courses and Competency Tests for \$800!

Items may be ordered separately or combined for savings.

View complete order options for Training Courses and Competency Tests on the 2022 Price List.

Order Options for Microscopy Procedures (PPMP)

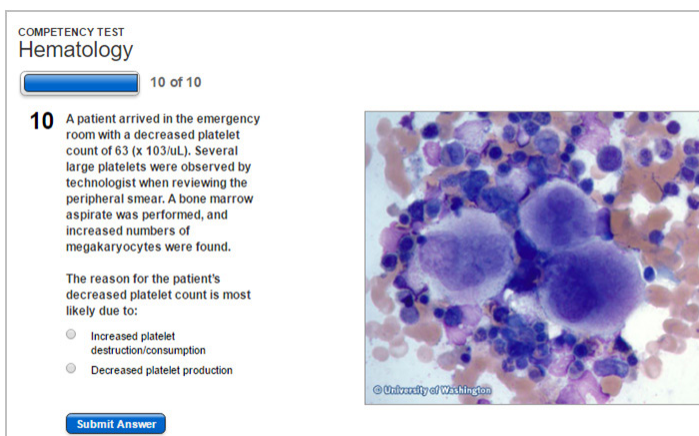
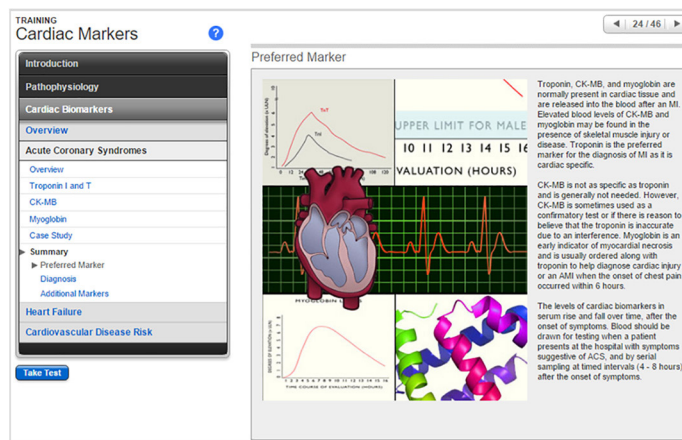
PPMP Training Courses and PPMP Competency Assessment may be ordered separately or combined for savings.

View order options on the 2022 Price List.

Order Options for Waived Test Kits and POC Instruments (WPOC)

WPOC Competency Assessment may be ordered separately or as an add on to any Training Course and/or Competency Test order.

View order options on the 2022 Price List.



ONLINE TRAINING & COMPETENCY

TRAINING COURSES AND COMPETENCY TESTS

Training Courses

All Training Courses **PT80000**
Individual Training Courses See below

Training courses are accredited for 1-3 hours of continuing education (CE) credit and can be used for initial training, cross training, remediation, and as a reference.

*** New Courses for 2022**

Utilization Management					
Case Studies in	PT80540	Patient Complications	PT80510	Cerebrospinal Fluid	PT80020
Laboratory Stewardship*		Patient Identification	PT80360	Fern Test	PT80480
Managing Reference Labs*	PT80550	Pediatric Phlebotomy	PT80340	Seminal Fluid	PT80180
		Skin Puncture	PT80370	Serous Fluid	PT80190
		Venipuncture	PT80380	Skin KOH	PT80490
Overview		Specimen Transport & Processing		Synovial Fluid	PT80200
Introduction to Analytic QA	PT80150	Courier Transport	PT80410	Vaginal Wet Prep	PT80470
Introduction to the Clinical Laboratory	PT80060	Specimen Processing	PT80130	Microbiology	
Patient Safety	PT80090	Specimen Transport	PT80400	Gram Stain	PT80030
Safety		Laboratory Skills		Mycology	PT80070
Biosafety	PT80120	Microscopy	PT80080	Parasitology	PT80220
Chemical Safety	PT80260	Molecular Diagnostics		Blood Bank	
Chemical Waste	PT80460	Introduction to Molecular Diagnostics	PT80420	Introduction to Transfusion	PT80010
Dry Ice and Liquid Nitrogen Safety	PT80500	Chemistry		Transfusion Safety:	
Electrical Safety	PT80290	Cardiac Markers	PT80160	Ordering & Administering	PT80230
Ergonomic Safety	PT80310	Protein Electrophoresis	PT80110	Specimen Collection	PT80240
Fire Safety	PT80300	Urinalysis	PT80140	Testing and Issuance	PT80250
Formaldehyde Safety	PT80330	Hematology		Immunology	
HazCom Standard - GHS Update	PT80270	Peripheral Blood	PT80040	ANCA	PT80450
UV Safety	PT80320	Coagulation		Anti-nuclear Antibody	PT80430
Specimen Collection		Coagulation	PT80170	Crithidia*	PT80530
Advanced Phlebotomy	PT80350	Body Fluids		Laboratory Methods	PT80050
Basic Phlebotomy	PT80100	Amniotic Fluid	PT80210	Mouse Stomach Kidney	PT80440
Blood Culture	PT80390				
Infection Control	PT80280				

Competency Tests

All Competency Tests **PT81000**
Individual Competency Tests See below

Five- or ten-question multiple choice competency assessment tests (accredited for 0.5 hours of CE credit each) are published biannually on January 1st and July 1st in each category.

Pre-Analytic		Transfusion Safety:		Hepatitis & HIV Ab	PT81070
Chain of Custody	PT81190	Specimen Collection	PT81220	Microbiology	PT81090
Customer Service	PT81170	Analytic		Mouse Stomach Kidney	PT81260
Patient Safety	PT81100	ANCA	PT81270	Protein Electrophoresis	PT81120
Pediatric Phlebotomy	PT81180	Anti-nuclear Antibody	PT81080	Semen Analysis	PT81230
Phlebotomy	PT81110	Chemistry	PT81030	Toxicology	PT81150
Safety	PT81130	Coagulation	PT81040	Transfusion Safety: Testing & Issuance	PT81240
Specimen Processing	PT81140	CSF/Serous	PT81020	Transfusion Service: Basic	PT81010
Specimen Transport	PT81200	Gram Stain	PT81050	Transfusion Service: Intermediate	PT81250
Transfusion Safety:		Hematology	PT81060	Urinalysis	PT81160
Ordering & Administering	PT81210				

Training Courses and Competency Tests combined

All of both Training and Competency **PT80900**
Individual Training and Competency combined See above

continues on the next page!



ONLINE TRAINING & COMPETENCY

POINT OF CARE

Microscopy Procedures (PPMP)

- Training Courses and Competency Assessment

PPMP Training Courses

PT80520

PPMP Competency Assessment

PT81900

PPMP Training and PPMP Competency together

PT81920

PPMP Competency Add-on to Training and/or Competency PT81903

Includes:	PPMP Training	PPMP Competency
	<ul style="list-style-type: none"> • Basic Microscopy • Fern Test • Pinworm 	<ul style="list-style-type: none"> • Qualitative Semen • Skin KOH • Urine Sediment • Vaginal Wet Prep

Waived Test Kits & POC Instruments (WPOC)

- Competency Assessment

WPOC Competency Assessment

PT81910

WPOC Competency Add-on to Training and/or Competency PT81913

* New for 2022

Includes:	PPMP Training	PPMP Competency
	<ul style="list-style-type: none"> • Accu-Chek Advantage • Accu-Chek Inform Glucose Meter • Albustix • Alco-Sensor FST • Alco-Sensor III • Alere hCG Cassette* • Amniotest • AmniSure • Ascensia Elite XL • AVOXimeter 1000E • Bayer Acetest • BiliChek • BinaxNOW COVID-19 Ag Card* • BinaxNOW Influenza A&B 	<ul style="list-style-type: none"> • BinaxNOW Influenza A&B Card 2* • BinaxNOW RSV • Cepheid Xpress SARS-Co-V-2* • Chemstrip 10 SG • Chemstrip Micral • Cholestech LDX - AST/ALT • Clearview HIV 1/2 STAT Pak • Clearview Mono* • Clinitek - Clinitest hCG • Clinitek - Multistix 10 SG • Clinitek 50 • CLOtest • CoaguChek XS Plus PT/INR • CoaguChek XS PT Test

MTS LECTURE LIBRARY SUBSCRIPTION

PT81800

Subscription provides access to a monthly, live 1 hour webinar primarily focused on Laboratory Management topics. Subscribers may share the access with all employees in their organization. After participating in each webinar, users have the option to complete a test to earn 1.0 CE credits.

This subscription also provides the user access to the library of more than 60 archived lectures. Each lecture is archived and available on their MTS account approximately one month after the presentation date.

Upon completion of the archived lecture the user will be able to complete a 10 question test and then earn 1.0 CE credits.



ASSAYED SAMPLE SETS

Assayed Sample Set products provide high-quality samples which can be used for test validation, method correlation, calibration verification/linearity, or employee training and/or competency requirements.

To order Assayed Sample Sets, [submit an order form](https://wslhpt.org) online at wslhpt.org.

Blood Lead (VSPB)

Item PT07030

Five samples per shipment

Blood lead assayed sample sets include samples which cover the analytical range of most instruments with the target value and acceptable range for each sample. Orders include five samples in the following ranges: 2-5 ug/dL, 10-15 ug/dL, 20-25 ug/dL, 35-40 ug/dL, and 45-50 ug/dL. Sample ranges are subject to change due to sample availability.

Blood Lead (VSBL)

Item PT07020

Three samples per shipment

Blood lead assayed sample sets include samples which cover the analytical range of most instruments with the target value and acceptable range for each sample. Orders include three samples in the following ranges: 2-5 ug/dL, 20-25 ug/dL, and 45-50 ug/dL. Sample ranges are subject to change due to sample availability.

Anti-HIV (VSHV)

Item PT07010

Five liquid samples per shipment

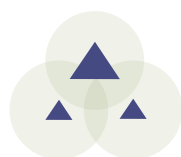
Includes an instruction page with worksheet and a sealed envelope containing expected test results. Samples are subject to availability. Compatible with rapid and traditional testing methods used to test for Anti-HIV-1 or Anti-HIV-1/2 (antibody).

HIV Ag/Ab Combo (VSHVC)

Item PT07070

Five liquid samples per shipment

Includes an instruction page with worksheet and a sealed envelope containing expected test results. Samples are subject to availability. Compatible with Alere Determine HIV Combo rapid kit and automated combo assays used to detect HIV-1/2 antibody and HIV-1 p24 Antigen.



ADDITIONAL PRODUCTS

Accuracy Monitoring Products

Provided in partnership with CEQAL. Accuracy Monitoring Products offering 100% human material samples with target values assigned by reference method or gravimetric additions.

[View available products](#) and [submit an order form](#) online at wslhpt.org or contact customer service at (800) 462-5261.

Calibration Verification/Linearity Products

Provided in partnership with AUDIT MicroControls. Calibration Verification/Linearity products can assist laboratories in meeting CLIA '88 calibration verification requirements.

Purchase includes access to AUDITOR™, a QC data reduction software tool to view group peer data, evaluate, and create reports. Shipping available in the US.

[View available products](#) and [submit an order form](#) online at wslhpt.org or contact customer service at (800) 462-5261.

Evaluation Sets

Evaluation Sets are survey validated and can be a valuable tool when troubleshooting a PT failure, new method validation, or other QA activities. Each set includes samples from one or more past PT events with corresponding statistics. These may be available to laboratories which are not current customers with WSLH PT for the analyte(s) or sub-specialty being requested.

**Please call for pricing and availability:
(800) 462-5261.**

**Supplies may be limited in quantity and
shelf-life.**

Off-Schedule Proficiency Testing

WSLH PT can provide an off-schedule event in the case of PT failure (remedial) or for pre-licensure. We can also provide QC or past PT samples (see Evaluation Sets above) to confirm current system status. Prior to ordering off-schedule events, contact your accrediting agency to confirm necessity of formal off-schedule PT and determine timeliness of need (immediate versus this quarter, 2-day versus priority overnight delivery), as these affect pricing.

**Please call for pricing and availability:
(800) 462-5261.**

**Supplies may be limited in quantity and
shelf-life.**

Binders

WSLH PT offers 3-ring binders to organize your proficiency testing records, which must be retained for two years, unless longer retention is required. Binders contain dividers, preprinted labels, and blank labels.

PT07000

Please indicate the number of binders desired on your order form.



SHIPPING SCHEDULE

Blood Gas	Blood Gas 1		Blood Gas 2		Blood Gas 3	
	Ship	Due	Ship	Due	Ship	Due
Blood Gases / Electrolytes / Metabolites (BG)	02/28/22	03/18/22	06/27/22	07/15/22	10/31/22	11/18/22
Blood Gas Hemoglobin / Hematocrit add-on (BGH)	02/28/22	03/18/22	06/27/22	07/15/22	10/31/22	11/18/22
i-STAT Chemistries Plus (BGB)	02/28/22	03/18/22	06/27/22	07/15/22	10/31/22	11/18/22
CO-Oximetry (CO)	02/28/22	03/18/22	06/27/22	07/15/22	10/31/22	11/18/22
i-STAT Chemistries - Waived Methods (BGW)	02/28/22	03/18/22	06/27/22	07/15/22		

Combined: Cardiac Special Chemistry	Cardiac 1		Cardiac 2		Cardiac 3	
	Ship	Due	Ship	Due	Ship	Due
Bilirubin - Elevated (NB)	02/21/22	03/11/22	05/23/22	06/10/22	10/03/22	10/21/22
Cardiac Markers - 5 sample (IE)	02/21/22	03/11/22	05/23/22	06/10/22	10/03/22	10/21/22
Cardiac Markers - 3 sample (TM)			05/23/22	06/10/22	10/03/22	10/21/22

	Special Chem 1				Special Chem 2	
	Ship	Due	Ship	Due	Ship	Due
Ammonia (NH)	02/21/22	03/11/22			10/03/22	10/21/22
Body Fluid Chemistry (PC)	02/21/22	03/11/22			10/03/22	10/21/22
Body Fluid pH - Visual (PH)	02/21/22	03/11/22			10/03/22	10/21/22
Hemoglobin A1c (Glycohemoglobin) - 3 samples (GH)	02/21/22	03/11/22			10/03/22	10/21/22
Hemoglobin A1c (Glycohemoglobin) - Afinion (GHA)	02/21/22	03/11/22			10/03/22	10/21/22
Immunoassay Chemistry (CS)	02/21/22	03/11/22			10/03/22	10/21/22
Immunoassay Chemistry B (CSB)	02/21/22	03/11/22			10/03/22	10/21/22
Procalcitonin (PCT)	02/21/22	03/11/22			10/03/22	10/21/22
Spinal Fluid Chemistry (SF)	02/21/22	03/11/22			10/03/22	10/21/22
SHBG and Testosterone (SHBG)	02/21/22	03/11/22			10/03/22	10/21/22
Tumor Markers (MT)	02/21/22	03/11/22			10/03/22	10/21/22
Urine Chemistry (CU)	02/21/22	03/11/22			10/03/22	10/21/22
Urine Chemistry - Afinion (ACR)	02/21/22	03/11/22			10/03/22	10/21/22

Chem/Endo/Tx	Chem/Endo/Tx 1		Chem/Endo/Tx 2		Chem/Endo/Tx 3	
	Ship	Due	Ship	Due	Ship	Due
Alcohol/Ketones, serum (AM)	01/24/22	02/11/22	04/25/22	05/13/22	08/29/22	09/16/22
Chemistry/Endocrinology/Therapeutic Drugs (CET)	01/24/22	02/11/22	04/25/22	05/13/22	08/29/22	09/16/22
Chemistry - Waived Methods (WC)	01/24/22	02/11/22			08/29/22	09/16/22
hCG, serum - qualitative (HCG)	01/24/22	02/11/22	04/25/22	05/13/22	08/29/22	09/16/22
Hemoglobin A1c (Glycohemoglobin) - 5 samples (GHR)	01/24/22	02/11/22	04/25/22	05/13/22	08/29/22	09/16/22
Urine Drug Adulteration Test (UDA)	01/24/22	02/11/22	04/25/22	05/13/22	08/29/22	09/16/22
Urine Drug Screen (UD)	01/24/22	02/11/22	04/25/22	05/13/22	08/29/22	09/16/22
Urine Drug Screen - Ethyl Glucuronide (ETG)	01/24/22	02/11/22	04/25/22	05/13/22	08/29/22	09/16/22

Combined: Blood Lead(5) BL	BloodLead(5) 1		BloodLead(5) 2		BloodLead(5) 3	
	Ship	Due	Ship	Due	Ship	Due
Blood Lead-5 sample (PB)	03/21/22	04/08/22	06/20/22	07/08/22	11/14/22	12/02/22
	BL 1				BL 2	
	Ship	Due	Ship	Due	Ship	Due
Blood Lead-3 sample (BL)	03/21/22	04/08/22			11/14/22	12/02/22

SHIPPING SCHEDULE, CONT.

Combined: Coag Coag QA Heme Reg*	Coag 1		Coag 2		Coag 3	
	Ship	Due	Ship	Due	Ship	Due
Coagulation - Basic (CA)	02/14/22	03/04/22	06/06/22	06/24/22	09/12/22	09/30/22
PT / INR - CoaguChek XS / Plus / Pro (PXS)	02/14/22	03/04/22	06/06/22	06/24/22	09/12/22	09/30/22
PT / INR - i-STAT and Coag-Sense (PRC)	02/14/22	03/04/22	06/06/22	06/24/22	09/12/22	09/30/22
	Coag QA 1				Coag QA 2	
	Ship	Due	Ship	Due	Ship	Due
Activated Clotting Time (CT)	02/14/22	03/04/22			09/12/22	09/30/22
D-Dimer (DD)	02/14/22	03/04/22			09/12/22	09/30/22
INR - CoaguChek XS / Plus - Waived Methods (CXSW)	02/14/22	03/04/22			09/12/22	09/30/22
INR - Coag-Sense - Waived Methods (CW)	02/14/22	03/04/22			09/12/22	09/30/22
	Heme Reg 1		Heme Reg 2		Heme Reg 3	
	Ship	Due	Ship	Due	Ship	Due
Hematology - Cell Identification (XI)	02/14/22	03/04/22	06/06/22	06/24/22	09/12/22	09/30/22
Hematology - Comprehensive (AF I-5)	02/14/22	03/04/22	06/06/22	06/24/22	09/12/22	09/30/22
Hematology - Limited (AT)	02/14/22	03/04/22	06/06/22	06/24/22	09/12/22	09/30/22
Hematology - Limited - Sysmex (AS)	02/14/22	03/04/22	06/06/22	06/24/22	09/12/22	09/30/22
Reticulocytes - Beckman Coulter (RTB)	02/14/22	03/04/22			09/12/22	09/30/22
Reticulocytes - Manual & some automated (RT)	02/14/22	03/04/22			09/12/22	09/30/22
Reticulocytes - Sysmex (RTS)	02/14/22	03/04/22			09/12/22	09/30/22

***Delivery for these products will be via overnight courier. Customers must make arrangements to accept delivery and have the package routed immediately to the lab for appropriate handling/storage.**

Misc QA_POC	Misc QA_POC 1		Misc QA_POC 2			
	Ship	Due	Ship	Due	Ship	Due
Body Fluid Cell Count - Automated (BFA)	04/04/22	04/22/22	10/17/22	11/4/22		
Body Fluid Cell Count - Manual (BFM)	04/04/22	04/22/22	10/17/22	11/4/22		
Body Fluid Microscopy (BF)	04/04/22	04/22/22	10/17/22	11/4/22		
Fecal Lactoferrin (LF)	04/04/22	04/22/22	10/17/22	11/4/22		
Fecal Occult Blood (OC)	04/04/22	04/22/22	10/17/22	11/4/22		
Gastric Occult Blood (GO)	04/04/22	04/22/22	10/17/22	11/4/22		
Glucose, Whole Blood - 3 sample (WBG)	04/04/22	04/22/22	10/17/22	11/4/22		
Glucose, Whole Blood - 5 sample (WBG)	04/04/22	04/22/22	10/17/22	11/4/22		
Group A Strep Antigen - Waived Methods (WS)	04/04/22	04/22/22	10/17/22	11/4/22		
Hematocrit - Waived Methods (HW)	04/04/22	04/22/22	10/17/22	11/4/22		
Hemoglobin - Waived Methods (HWG)	04/04/22	04/22/22	10/17/22	11/4/22		
Hemoglobin - HemoCue Hb 301 & Hb 801 - Waived (HWH)	04/04/22	04/22/22	10/17/22	11/4/22		
Sedimentation Rate (SR)	04/04/22	04/22/22	10/17/22	11/4/22		
Sedimentation Rate - iSED and Alifax (SRI)	04/04/22	04/22/22	10/17/22	11/4/22		
Sedimentation Rate - Sedimat 15 & ESR Stat Plus (SRA)	04/04/22	04/22/22	10/17/22	11/4/22		
Sickle Cell Screen (SK)	04/04/22	04/22/22	10/17/22	11/4/22		
Point of Care / PPMP Package: (OC); (WS); (PM); (UR); (WBG)	04/04/22	04/22/22	10/17/22	11/4/22		
Provider Performed Microscopy (PM)	04/04/22	04/22/22	10/17/22	11/4/22		
Urinalysis / Urine hCG (UR)	04/04/22	04/22/22	10/17/22	11/4/22		
Urine hCG - 5 sample (UH)	04/04/22	04/22/22	10/17/22	11/4/22		
Urine Sediment Identification (SU)	04/04/22	04/22/22	10/17/22	11/4/22		

SHIPPING SCHEDULE, CONT.

Blood Bank*	Blood Bank 1		Blood Bank 2		Blood Bank 3	
	Ship	Due	Ship	Due	Ship	Due
Blood Bank (Immunohematology) - Comprehensive (AB)	02/28/22	03/18/22	06/13/22	07/1/22	10/10/22	10/28/22
Blood Bank (Immunohematology) - Limited (AB)	02/28/22	03/18/22	06/13/22	07/1/22	10/10/22	10/28/22
Blood Bank Direct Antiglobulin Test (DAT)	02/28/22	03/18/22			10/10/22	10/28/22

***Delivery for these products will be via overnight courier. Customers must make arrangements to accept delivery and have the package routed immediately to the lab for appropriate handling/storage.**

Fetal Hb*	Fetal Hb 1		Fetal Hb 2			
	Ship	Due	Ship	Due	Ship	Due
Fetal Red Cell Detection (HBF)	04/25/22	05/13/22	10/31/22	11/18/22		

***Delivery for these products will be via overnight courier. Customers must make arrangements to accept delivery and have the package routed immediately to the lab for appropriate handling/storage.**

Combined: Immunology HIV/HP/SS HIV Combo	Immunology 1		Immunology 2		Immunology 3	
	Ship	Due	Ship	Due	Ship	Due
ANA Immunoserology (XN)	01/18/22	02/04/22	05/16/22	06/03/22	09/06/22	09/23/22
ASO Immunoserology (XS)	01/18/22	02/04/22	05/16/22	06/03/22	09/06/22	09/23/22
CRP Immunoserology (XP)	01/18/22	02/04/22			09/06/22	09/23/22
Helicobacter pylori Serology (HL)	01/18/22	02/04/22			09/06/22	09/23/22
Immunoproteins (IMP)	01/18/22	02/04/22	05/16/22	06/03/22	09/06/22	09/23/22
Infectious Disease Serology (MMV)	01/18/22	02/04/22			09/06/22	09/23/22
Lyme Disease Serology (LY)	01/18/22	02/04/22			09/06/22	09/23/22
Mono Immunoserology (ZM)	01/18/22	02/04/22	05/16/22	06/03/22	09/06/22	09/23/22
Mono Immunoserology - Waived Methods (MW)	01/18/22	02/04/22			09/06/22	09/23/22
Mycoplasma Antibody (MP)	01/18/22	02/04/22			09/06/22	09/23/22
Rheumatoid Factor Immunoserology (ZR)	01/18/22	02/04/22	05/16/22	06/03/22	09/06/22	09/23/22
Rubella Immunoserology (XU)	01/18/22	02/04/22	05/16/22	06/03/22	09/06/22	09/23/22
Rubella IgM Immunoserology (XM)	01/18/22	02/04/22			09/06/22	09/23/22
SARS-CoV-2 Serology (SCA)	01/18/22	02/04/22			09/06/22	09/23/22
Thyroid Antibodies (THY)	01/18/22	02/04/22			09/06/22	09/23/22
	HIV/HP/SS 1		HIV/HP/SS 2		HIV/HP/SS 3	
	Ship	Due	Ship	Due	Ship	Due
Anti-HIV (HV)	01/18/22	02/04/22	05/16/22	06/03/22	09/06/22	09/23/22
Anti-HIV - Waived Methods (HVW)	01/18/22	02/04/22			09/06/22	09/23/22
Hepatitis (YB)	01/18/22	02/04/22	05/16/22	06/03/22	09/06/22	09/23/22
Syphilis Serology (SS)	01/18/22	02/04/22	05/16/22	06/03/22	09/06/22	09/23/22
	HIV Combo 1		HIV Combo 2		HIV Combo 3	
	Ship	Due	Ship	Due	Ship	Due
HIV Ag/Ab Combo (HVC)	01/18/22	02/04/22	05/16/22	06/03/22	09/06/22	09/23/22
HIV Ag/AB Combo Waived Methods (HCW)	01/18/22	02/04/22			09/06/22	09/23/22

SHIPPING SCHEDULE, CONT.

Combined: Bacti_Viral SP Micro	Bacti_Viral 1		Bacti_Viral 2		Bacti_Viral 3	
	Ship	Due	Ship	Due	Ship	Due
Bacterial Antigens for meningitis (BA)	02/07/22	02/25/22	05/02/22	05/20/22	09/26/22	10/14/22
Bacteriology - Comprehensive (MC)	02/07/22	02/25/22	05/02/22	05/20/22	09/26/22	10/14/22
Blood Culture (CB)	02/07/22	02/25/22	05/02/22	05/20/22	09/26/22	10/14/22
Clostridium difficile (CD)	02/07/22	02/25/22	05/02/22	05/20/22	09/26/22	10/14/22
CT/GC Detection (AC)	02/07/22	02/25/22	05/02/22	05/20/22	09/26/22	10/14/22
Enteric Pathogens (NP)	02/07/22	02/25/22	05/02/22	05/20/22	09/26/22	10/14/22
GI Multiplex (EP)	02/07/22	02/25/22	05/02/22	05/20/22	09/26/22	10/14/22
Gram Stain (GS)	02/07/22	02/25/22	05/02/22	05/20/22	09/26/22	10/14/22
Group A Strep Antigen (SA)	02/07/22	02/25/22	05/02/22	05/20/22	09/26/22	10/14/22
Group A Strep (ST)	02/07/22	02/25/22	05/02/22	05/20/22	09/26/22	10/14/22
Group B Strep / Neisseria gonorrhoeae (SB)	02/07/22	02/25/22	05/02/22	05/20/22	09/26/22	10/14/22
HPV Molecular (HPV)	02/07/22	02/25/22	05/02/22	05/20/22	09/26/22	10/14/22
HSV Molecular (HSV)	02/07/22	02/25/22	05/02/22	05/20/22	09/26/22	10/14/22
Legionella Antigen (LGA)	02/07/22	02/25/22	05/02/22	05/20/22	09/26/22	10/14/22
Meningitis Multiplex (MEP)	02/07/22	02/25/22	05/02/22	05/20/22	09/26/22	10/14/22
MRSA / VRE (MR)	02/07/22	02/25/22	05/02/22	05/20/22	09/26/22	10/14/22
Respiratory Multiplex (RP)	02/07/22	02/25/22	05/02/22	05/20/22	09/26/22	10/14/22
SARS-CoV-2 Antigen (CVW)			05/02/22	05/20/22	09/26/22	10/14/22
SARS-CoV-2 Molecular Liquid (CLM)			05/02/22	05/20/22	09/26/22	10/14/22
SARS/Viral Molecular - 5 Samples (CM)	02/07/22	02/25/22	05/02/22	05/20/22	09/26/22	10/14/22
SARS/Viral Molecular - 3 Samples (CMW)			05/02/22	05/20/22	09/26/22	10/14/22
Throat / Urine Bacteriology (TU)	02/07/22	02/25/22	05/02/22	05/20/22	09/26/22	10/14/22
Throat / Urine Bacteriology - Limited (TU)	02/07/22	02/25/22	05/02/22	05/20/22	09/26/22	10/14/22
Urine Culture (UC)	02/07/22	02/25/22	05/02/22	05/20/22	09/26/22	10/14/22
Vaginal Pathogens (VP)	02/07/22	02/25/22	05/02/22	05/20/22	09/26/22	10/14/22
Viral - Limited (VA)	02/07/22	02/25/22	05/02/22	05/20/22	09/26/22	10/14/22
Viral - Waived Methods (VCW)			05/02/22	05/20/22	09/26/22	10/14/22
Viral with Rotavirus (VA)	02/07/22	02/25/22	05/02/22	05/20/22	09/26/22	10/14/22
VP Molecular (VPM)	02/07/22	02/25/22	05/02/22	05/20/22	09/26/22	10/14/22
	SP Micro-A 1		SP Micro-A 2		SP Micro-A 3	
	Ship	Due	Ship	Due	Ship	Due
Blood Parasites (PAB)	02/07/22	02/25/22	05/02/22	05/20/22	09/26/22	10/14/22
Giardia / Cryptosporidium Antigen (GI)	02/07/22	02/25/22	05/02/22	05/20/22	09/26/22	10/14/22
Mycology - Cryptococcal Antigen (MYC)	02/07/22	02/25/22	05/02/22	05/20/22	09/26/22	10/14/22
Parasitology - Comprehensive (PA)	02/07/22	02/25/22	05/02/22	05/20/22	09/26/22	10/14/22
	SP Micro-B 1		SP Micro-B 2		SP Micro-B 3	
	Ship	Due	Ship	Due	Ship	Due
Mycology - Dermatophyte (DM)	02/07/22	03/18/22	05/02/22	06/10/22	09/26/22	11/04/22
Mycology - Yeast (YE)	02/07/22	03/18/22	05/02/22	06/10/22	09/26/22	11/04/22
	SP Micro-C 1		SP Micro-C 2		SP Micro-C 3	
	Ship	Due	Ship	Due	Ship	Due
Mycology - Comprehensive (MY)	02/07/22	04/08/22	05/02/22	07/01/22	09/26/22	11/29/22
CRE	CRE 1		CRE 2			
	Ship	Due	Ship	Due	Ship	Due
Carbapenem Resistance Detection (CR)	03/28/22	04/15/22	09/19/22	10/7/22		

SHIPPING SCHEDULE, CONT.

Bioterrorism Preparedness	Bioterrorism Prep 1		Bioterrorism Prep 2			
	Ship	Due	Ship	Due	Ship	Due
Bioterrorism Preparedness Exercise (BPE)	03/14/22	04/01/22	10/17/22	11/4/22		

Frozen Micro*	Frozen Micro 1		Frozen Micro 2			
	Ship	Due	Ship	Due	Ship	Due
Bordetella by Molecular Methods (BOR)	04/18/22	05/06/22	10/24/22	11/11/22		
Rabies by DFA (RA)	04/18/22	05/06/22	10/24/22	11/11/22		
Rabies by dRIT (RA)	04/18/22	05/06/22	10/24/22	11/11/22		

***Delivery for these products will be via overnight courier. Customers must make arrangements to accept delivery and have the package routed immediately to the lab for appropriate handling/storage.**

Micro QA	Micro QA 1		Micro QA 2			
	Ship	Due	Ship	Due	Ship	Due
Bacterial Vaginosis Detection (BV)	04/18/22	05/06/22	10/10/22	10/28/22		
Group A Strep Molecular - Waived Methods (WSM)	04/18/22	05/06/22	10/10/22	10/28/22		
H. pylori Stool Antigen (HPSA)	04/18/22	05/06/22	10/10/22	10/28/22		
India Ink (IND)	04/18/22	05/06/22	10/10/22	10/28/22		
KOH Slides (KOH)	04/18/22	05/06/22	10/10/22	10/28/22		
Mycoplasma genitalium Molecular (MG)	04/18/22	05/06/22	10/10/22	10/28/22		
Rapid Urease (RUR)	04/18/22	05/06/22	10/10/22	10/28/22		
Shiga Toxin (SHG)	04/18/22	05/06/22	10/10/22	10/28/22		
Trichomonas Molecular (TVM)	04/18/22	05/06/22	10/10/22	10/28/22		
Trichomonas OSOM (TV)	04/18/22	05/06/22	10/10/22	10/28/22		

Semen	Semen 1		Semen 2			
	Ship	Due	Ship	Due	Ship	Due
Amniotic Fluid Detection (AE)	05/31/22	06/17/22	10/24/22	11/11/22		
Fetal Fibronectin (FFN)	05/31/22	06/17/22	10/24/22	11/11/22		
Post-Vasectomy Semen Analysis (PV)	05/31/22	06/17/22	10/24/22	11/11/22		
Sperm Count (SP)	05/31/22	06/17/22	10/24/22	11/11/22		
Sperm Morphology - pre-stained slide (SMS)	05/31/22	06/17/22	10/24/22	11/11/22		
Sperm Morphology - unstained slide (SM)	05/31/22	06/17/22	10/24/22	11/11/22		
Sperm Motility (MOT)	05/31/22	06/17/22	10/24/22	11/11/22		

Combined: TB	TB-A1		TB-A2			
	Ship	Due	Ship	Due	Ship	Due
Acid Fast Stain (MA)	03/28/22	04/15/22	09/19/22	10/7/22		
M. tuberculosis by Molecular Methods (TB)	03/28/22	04/15/22	09/19/22	10/7/22		
	TB-B1		TB-B2			
	Ship	Due	Ship	Due	Ship	Due
Mycobacteriology Culture (MB)	03/28/22	05/27/22	09/19/22	11/18/22		



INDEX

A

ABO group	27
A/C ratio	18
Acetaminophen	14
Acetaminophen, urine	19
Acetone	11
6-AM (6-Acetylmorphine)	19
Acid-fast stain	43
Activated clotting time (ACT)	20
Activated partial thromboplastin time (APTT)	20
Adenovirus	37, 48, 50
Aerobic Actinomyces identification	44
Aeromonas	36
Alanine Aminotransferase (ALT)	13, 14
Albumin	13, 14
Albumin, body fluid	12
Alcohol (ethanol)	11
Alcohol (ethanol), urine	19
Alkaline phosphatase (ALKP)	13, 14
Alpha-1 Antitrypsin (AAT)	30
Alpha-fetoprotein	14
Amikacin	14
Ammonia	11
Amniotic fluid detection	51
Amphetamines	19
Amylase	13, 14
Amylase, body fluid	12
Amylase, urine	18
Anaerobic bacteria culture	34
Anaplasma species	46
Antibody identification, blood bank	27
Anti-HIV	29, 30, 61
Antimicrobial susceptibility	34, 41
Antinuclear antibody (ANA)	28
Antistreptolysin O (ASO)	28
Anti-Thyroglobulin	32
Anti-Thyroid Peroxidase	32
Aspartate Aminotransferase (AST)	13, 14
Astrovirus	37

B

Babesia species	46
Bacterial vaginosis detection	33, 42
Barbiturates	19
Benzodiazepines	19
Beta-2 Microglobulin	18
Beta-hydroxybutyrate	11
Bilirubin, direct	11, 14
Bilirubin, total	11, 13, 14
Bilirubin, urine	53, 54
Bioterrorism Preparedness Exercise	35
Blood Bank	27
Blood culture	34, 35
Blood Gases	8, 9
Blood Lead	12, 61
Blood parasite identification	46
BNP	10
Bordetella	35, 48

Borrelia burgdorferi (Lyme disease)	30
Buprenorphine	19

C

C. difficile toxin and/or antigen detection	34, 36, 37
CA 125	18
CA 15-3	18
CA 19-9	18
CA 27.29	18
Calcium, ionized	8
Calcium, total	13, 14
Calcium, urine	18
Campylobacter	36, 37
Candida detection	42
Cannabinoids (THC)	19
Carbamazepine	14
Carbapenem resistance	35
Carbon dioxide (CO ₂)	8, 13, 14
Carboxyhemoglobin	9
Carcinogenic embryonic antigen (CEA)	16
Cardiac Markers	10
Carisoprodol	19
Cell identification, body fluid	51
Cell identification, hematology	24
Chemistry - Body Fluid	12
Chemistry - Immunoassay	16
Chemistry - Spinal Fluid	17
Chemistry - Urine	18
Chemistry - Waived Methods	9, 13
Chlamydia trachomatis detection	36
Chlamydophila pneumoniae	48
Chloride	8, 9, 13, 14
Chloride, spinal fluid	17
Chloride, urine	18
Cholesterol, body fluid	12
Cholesterol, HDL	13, 14
Cholesterol, LDL (calculated)	13, 14
Cholesterol, LDL (measured)	14
Cholesterol, total	13, 14
CK-MB	10
Coagulation	20, 21
Cocaine metabolites	19
Compatibility testing	27
Complement C3	30
Complement C4	30
Coronavirus	32, 48, 49
Cortisol	14
Cotinine	19
C-peptide	17
C-reactive protein (CRP)	10, 28
Creatine Kinase (CK)	10, 13, 14
Creatinine	8, 9, 13, 14
Creatinine, body fluid	12
Creatinine, urine	18, 19
Cryptococcal antigen detection	44
Cryptococcus neoformans/gattii	40
Cryptosporidium detection	37, 46
Crystal identification, body fluid	51
Cyclospora	37

INDEX

Cytomegalovirus (CMV) 40

D

DAT 27
D-dimer 10, 20
Dermatophyte 44
DHEA Sulfate 16
Digoxin 14

E

EDDP 19
Ehrlichia species 46
Endocrinology 14
Entamoeba histolytica 37,
Enteric pathogen identification. 34, 36
Enterovirus (EV) 40
Eosinophils, nasal smear 53, 54
Erythrocyte count (RBC), blood 23
Erythrocyte count (RBC), body fluid. 51
Erythrocyte sedimentation rate. 25
Escherichia coli (toxigenic) 37
Escherichia coli K1 33, 40
Escherichia coli O157:H7 36
Estradiol 16
Ethanol (alcohol) 11
Ethanol (alcohol), urine 19
Ethyl Glucuronide (EtG) 19

F

Fecal smear for leukocytes 53, 54
Fentanyl 19
Fern test 53, 54
Ferritin 16
Fetal fibronectin. 52
Fetal hemoglobin 26
Fetal Screen 26
Fetal Red Cell Detection. 26
Fibrinogen 20
Filarial worms 46
Folate 16
Follicle stimulating hormone (FSH) 16
Free thyroxine (FT4) 14
Free triiodothyronine (FT3) 14
Fungus Identification. 44

G

Gamma glutamyltransferase (GGT) 13, 14
Gardnerella detection 42
Gentamicin 14
GI multiplex panel 37
Giardia 37, 46
Glucose 8, 9, 13, 14
Glucose, body fluid. 12
Glucose, spinal fluid 17
Glucose, urine. 18, 53, 54
Glucose, whole blood 15
Glycohemoglobin (Hemoglobin A1c) 16

Gram stain. 34, 35, 37, 41

H

Haemophilus influenzae. 40
Haemophilus influenzae type b 33
hCG, serum 14
hCG, urine. 53, 54
Helicobacter pylori (total antibody) 28
Helicobacter pylori Antigen, Stool. 39
Hematocrit 8, 9, 23, 26
Hematocrit, waived methods. 9, 26
Hematology 22, 23, 24, 25, 26
Hemoglobin 8, 9, 15, 23
Hemoglobin A1c (Glycohemoglobin) 16
Hemoglobin/Blood, urine 53, 54
Hemoglobin F. 26
Hemoglobin, waived methods 9, 15
Hepatitis - Anti-HAV, IgM. 29
Hepatitis - Anti-HBc (total antibody) 29
Hepatitis - Anti-HBc, IgM 29
Hepatitis - Anti-HBs 29
Hepatitis - Anti-HCV 29
Hepatitis - HBsAg 29
Herpes Simplex virus (HSV) 40, 48
HIV (Anti-HIV) 29, 30, 61
HIV-p24 Antigen 29, 61
Homocysteine. 16
HPV Genotyping 48
hs-CRP 10
Human herpesvirus 6 (HHV-6) 40
Human metapneumovirus 48
Human Papillomavirus (HPV) 48
Human parechovirus (HPeV). 40

I

IG% 23
IgA 30
IgE 30
IGFBP, amniotic fluid 51
IgG 30
IgM 30
Immunoproteins 30
India Ink (encapsulated yeast detection) 45
Infectious mononucleosis 31
Influenza 48, 49, 50
INR 20, 21
Insulin. 17
Ionized calcium 8
Ionized magnesium. 8
IRF. 24
Iron binding capacity (TIBC), calculated. 14
Iron binding capacity (TIBC), measured 14
Iron, total. 14

K

Ketones. 11
Ketones, urine 53, 54
KOH (skin & vaginal) 53, 54

INDEX

KOH Preparation 44

L

Lactate (Lactic acid) 8, 14
 Lactate (Lactic acid), spinal fluid 17
 Lactate dehydrogenase (LDH) 14
 Lactate dehydrogenase (LDH), body fluid 12
 Lactate dehydrogenase (LDH), spinal fluid 17
 Lactoferrin 51
 Lead, blood 12, 61
 Legionella antigen 39
 Leukocyte count (WBC), blood 23
 Leukocyte count (WBC), body fluid 51
 Leukocyte esterase 53, 54
 Leukocytes, fecal smear 53, 54
 Lipase 14
 Listeria monocytogenes 40
 Lithium 14
 Luteinizing hormone (LH) 16
 Lyme disease (Borrelia burgdorferi) 30

M

Magnesium 14
 Magnesium, ionized 8
 Magnesium, urine 18
 MCV 23
 MDMA (Ecstasy) 19
 Measles IgG, IgM 30
 Meningitis Multiplex 40
 Meperidine 19
 Methadone 19
 Methamphetamines 19
 Methaqualone 19
 Methemoglobin 9
 Methicillin-resistant Staph aureus (MRSA) 34, 40
 Microalbumin 18
 Modified acid-fast stain 46
 Mold, yeast, and yeast-like organism identification 44
 Mononucleosis infectious 30, 31
 MPV 23
 Mumps IgG, IgM 30
 Mycobacteria culture 43
 Mycobacteriology 43
 Mycobacterium tuberculosis detection 43
 Mycology 44, 45
 Mycoplasma antibody 31
 Mycoplasma genitalium 40
 Mycoplasma pneumoniae 48
 Myoglobin 10

N

Nasal smear for eosinophils 53, 54
 Neisseria gonorrhoeae culture 34, 39
 Neisseria gonorrhoeae molecular 36
 Neisseria meningitidis 40
 Neisseria meningitidis group A, B, C, Y, W135 33
 Nitrites 19, 53, 54
 Norovirus 37

NT-proBNP 10
 Nucleated red blood cells (NRBC) 23

O

Occult blood (fecal) 52, 53
 Occult blood (gastric) 52
 Opiates 19
 Osmolality 14
 Osmolality, urine 18
 Oxidants 19
 Oxycodone 19
 Oxyhemoglobin 9

P

p24 Antigen 29, 61
 PAMG-1 protein, amniotic fluid 51
 Parainfluenza 48
 Parasitology 46, 47
 pCO₂ 8
 Permanent stain (for parasitology) 46
 pH, amniotic fluid 12
 pH, blood 8
 pH, body fluid 12
 pH, gastric 12, 52
 pH, urine 19, 53, 54
 Phencyclidine (PCP) 19
 Phenobarbital 14
 Phenytoin (Dilantin) 14
 Phosphorus 13, 14
 Phosphorus, urine 18
 Pinworm preparation 53, 54
 Plasmodium species 46
 Platelet count 23
 Plesiomonas 36, 37
 pO₂ 8
 Post-vasectomy 56
 Potassium 8, 9, 13, 14
 Potassium, spinal fluid 17
 Potassium, urine 18
 PPI2/AFP, amniotic fluid 51
 Prealbumin 16
 Procalcitonin 17
 Progesterone 16
 Prolactin 16
 Propoxyphene 19
 Prostate-specific antigen (PSA), free 18
 Prostate-specific antigen (PSA), total 16
 Protein, body fluid 12
 Protein, spinal fluid 17
 Protein, total 13, 14
 Protein, urine 18, 53, 54
 Protine (PT) 20, 21
 Provider Performed Microscopy 53, 54
 PTH, intact 17

R

Rabies Antigen 48
 Rapid Urease 39

INDEX

RBC (Erythrocyte count), blood	23
RBC (Erythrocyte count), body fluid	51
RDW	23
Re-He	24
Respiratory Multiplex Panel	48
Respiratory syncytial virus (RSV)	48, 50
Reticulocyte count	24
Rh (D) typing	27
Rheumatoid factor	31
Rhinovirus/Enterovirus	48
Rifampin resistance screen (M. tuberculosis)	43
Rotavirus	37, 50
Rubella IgG, IgM	31, 32
Rupture of fetal membranes	12, 51

S

Salicylate	14
Salmonella	36
Sapovirus	37
SARS-CoV-2	32, 48, 49
Sex Hormone-Binding Globulin	17
Shiga toxin	41
Shigella	36, 37
Sickle cell screen	26
Sodium	8, 9, 13, 14
Sodium, spinal fluid	17
Sodium, urine	18
Specific gravity	19, 53, 54
Sperm count	56
Sperm morphology	56
Sperm motility	57
Sperm progressive motility	57
Staphylococcus aureus	40
Stool wet mount (for parasitology)	46
Strep A antigen detection	34, 38, 41, 53
Strep A culture	34, 38, 41
Strep B antigen	33
Strep B culture	34, 39
Strep B molecular	34, 39
Streptococcus agalactiae	40
Streptococcus pneumoniae	33, 40
Syphilis Nontreponemal	32
Syphilis Treponemal	32

T

T3 Uptake / T-Uptake	14
Testosterone, bioavailable	17
Testosterone, free	17
Testosterone, total	16, 17
Theophylline	14
Therapeutic Drugs	14
Thyroglobulin Antibody	32
Thyroid Antibodies	32
Thyroid Peroxidase/ Microsomal Antibody	32
Thyroid-stimulating hormone (TSH)	14
Thyroxine (T4)	14
TIBC (Iron binding capacity), calculated	14
TIBC (Iron binding capacity), measured	14

Tobramycin	14
Tramadol	19
Transferrin	16
Trichomonas detection	42, 47
Tricyclic antidepressants	19
Triglycerides	13, 14
Triglycerides, body fluid	12
Triiodothyronine (T3)	14
Troponin I	10
Troponin T	10
Trypanosoma species	46
Tumor Markers (AFP)	14
Tumor Markers	14, 18

U

UIBC	14
Unexpected antibody detection	27
Urea nitrogen, blood (BUN)	8, 9, 13, 14
Urea nitrogen, urine	18
Urease	39
Uric acid	13, 14
Uric acid, urine	18
Urinalysis	53, 54
Urine adulteration test	19
Urine culture	34, 41
Urine drug screen	19
Urine hCG	53, 54
Urine sediment	53, 54, 55
Urobilinogen	53, 54

V

Vaginal wet preparation	53, 54
Valproic acid	14
Vancomycin	14
Vancomycin-resistant Enterococcus (VRE)	34, 40
Varicella zoster IgG, IgM	30
Varicella zoster virus (VZV)	40
Vibrio	36, 37
Virology	48, 49, 50
Vitamin B12	16
25-OH Vitamin D, total	17

W

WBC (Leukocyte count), blood	23
WBC (Leukocyte count), body fluid	51
WBC differential - automated	23
Whole Blood Glucose	15, 53
Wound culture	34

Y

Yeast and yeast-like organism identification	44, 45
Yersinia	36, 37

Z

Zolpidem	19
----------	----

YOUR LAB OUR MISSION

WSLH PROFICIENCY TESTING



The national public health lab that is on a mission to provide reliable, affordable, and easy-to-use proficiency testing products with rapid access to results.

From staffing productivity and ever-evolving technology to time constraints and redirected revenue, Wisconsin State Laboratory of Hygiene (WSLH) Proficiency Testing knows you are working more strategically than ever before to break down barriers to quality patient testing. Everyday behind the doors of Wisconsin's public and environmental health lab, WSLH Proficiency Testing is helping labs like yours stay creative and in control of your costs without sacrificing accurate, reliable results.

Located in the beautiful capital city of Madison, Wisconsin, WSLH Proficiency Testing is part of a national public health lab that connects you to a team of experienced Medical Technologists and to an array of relevant resources to help you overcome quality assurance challenges.

WSLH Proficiency Testing has been building a solid foundation for clinical laboratory improvement since 1966. Our program is approved by CMS and is accepted by the College of American Pathologists (CAP), The Joint Commission, and COLA.

To learn more about our products, visit wslhpt.org, or call (800) 462-5261.