



25th Annual
P.A.C.E.® Approved



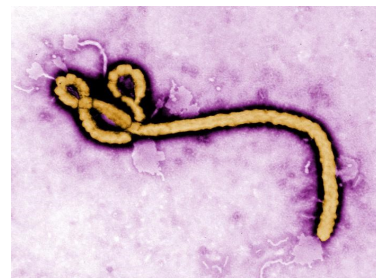
Wisconsin State
Laboratory of Hygiene
UNIVERSITY OF WISCONSIN-MADISON

Wisconsin Virology Conference

Featured Speakers

Hon Ip, Ph.D. *Emergence of Avian Influenza in the US*
National Wildlife Health Research Center

Katelyn Harms, MPH, CIC *Ebola Hospital Preparedness*
Meriter Hospital



Date: Thursday June 25, 2015



Location: LOWELL CENTER UW-EXTENSION
610 Langdon Street
Madison, WI 53703

Topics

- Emergence of Avian Influenza H5 in the US
- Ebola Hospital Preparedness
- Emerging Arboviruses: Dengue and Chikungunya
- School-based Respiratory Surveillance Program
- Rabies Virus
- Influenza Vaccine Efficacy



Sign Up Now

Speakers

- Hon Ip, PhD, National Wildlife Health Research Center
- Katelyn Harms, MPH, Meriter Hospital
- Jim Kazmierczak, DVM, WI Dept. of Public Health
- Maureen Landsverk, RN, UW Dept. of Family Medicine
- Pete Shult, PhD, WSLH
- Jim Powell, MS, WSLH
- Kellie Kostopoulos, MT(ASCP), Meriter Laboratories
- Mary Wedig, BS, WSLH

Contact: Erik Reisdorf
erik.reisdorf@slh.wisc.edu

Location Details



The **LOWELL CENTER** is located on the UW-Madison campus at 610 Langdon Street. Public Parking is available at 415 N. Lake Street

Lodging

Lowell Center <http://conferencing.uwex.edu/lodging.cfm>

Concourse Hotel <http://www.concoursehotel.com/>

