

# Laboratory Surveillance Report

## Influenza (Week ending September 21, 2019)

### Surveillance Data Synopsis

- **Rhinovirus/enterovirus was the predominant respiratory virus reported. Activity is increasing.**
- **Norovirus and EPEC were the most frequently reported gastro-pathogens.**

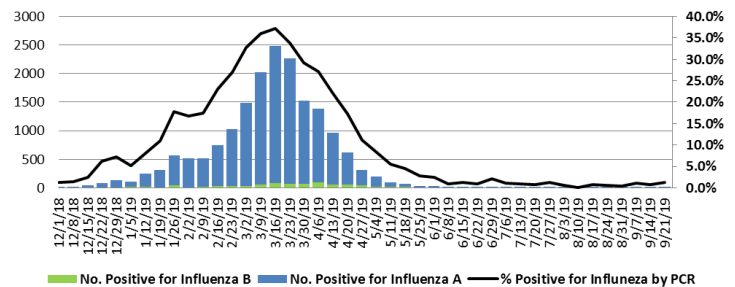
### National Influenza Update (CDC)

- Nationally, the CDC reported that 3.2% of the 11,493 surveillance specimens tested positive for influenza virus. (A and B). Overall, activity is sporadic across the US.
- There was almost equal distribution of the influenza A viruses subtyped at public health labs with 51% influenza A (H3N2) and 49% influenza A (H1N1)pdm09.

### Wisconsin Influenza Update

- Clinical labs reported a total of 11 specimens of the 924 tested (1.2%) by PCR were positive for influenza A viruses. There were no influenza B virus detections reported.
- Of the influenza A viruses subtyped, 43% were seasonal A (H3N2) and 57% were seasonal A (H1N1)pdm09.
- Influenza activity is sporadic in Wisconsin.

**% Positive for Influenza by PCR (Wisconsin), Week Ending September 21, 2019**



### To enhance surveillance activities for influenza viruses, the WSLH asks labs to please send:

1. A sampling of specimens from influenza-related hospitalizations (e.g. 1 per week).
2. Specimens that fail to subtype (Ct <35) if subtyping for 2009 pdmH1 and H3 were performed.

## Other Surveillance Data-Wisconsin

### Week Ending September 21, 2019

Resp. Pathogen PCR	# Tested	% Positive
Rhinovirus/enterovirus	454	29.1↑
Adenovirus	231	2.2
Parainfluenza	467	1.3
Influenza	924	1.2
Human metapneumovirus	481	<1
RSV	547	<1
Coronavirus	231	0
<i>B. pertussis</i>	200	1.0

### Respiratory

- Rhinovirus/enterovirus was the predominant respiratory virus reported. Activity is increasing.

### Gastropathogens

- EPEC and Norovirus were the predominant gastropathogens reported by Wisconsin labs performing CIDsT.
- Other gastropathogens reported included EPEC (9.7%), ETEC (1.7%), EAEC (4.3%), *P. shigelloides* (1.2%), *V. cholera* (<1%) and Adeno 40/41 (1.3%).

### Week Ending September 21, 2019

GI Pathogen PCR	# Tested	% Positive
Norovirus	311	3.2
Campylobacter	491	2.9
Giardia	323	1.9
Salmonella	491	1.6
Cryptosporidium	323	1.5
STEC	428	<1
<i>E. coli</i> 0157	239	<1
Cyclospora	164	0
Sapovirus	164	0
Shigella	446	0
Rotavirus	302	0