

Laboratory Surveillance Report

Surveillance Data Synopsis

- The percentage of specimens testing positive for SARS-CoV-2 increased in Wisconsin.
- No influenza virus positives were reported in Wisconsin.
- Giardia was the most frequently reported gastro-pathogen.

Influenza & SARS-CoV-2 (Week ending October 3, 2020)

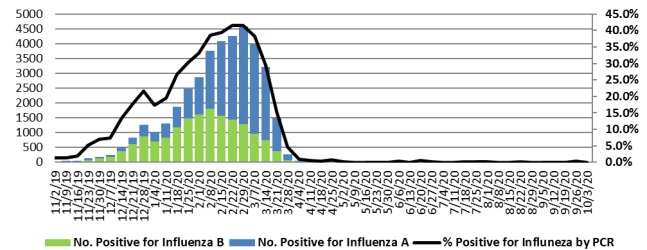
SARS-CoV-2 Update

- In Wisconsin, positivity increased to 9.1% of the 163,485 specimens tested by PCR at WSLH & clinical labs voluntarily reporting testing data.
- Nationally, the percentage of specimens testing positive by PCR at clinical, commercial and public health labs was 4.9%.
- Nationally, the CDC reported the percent positivity increased slightly among those aged 5-17 years and those 65 years and older.

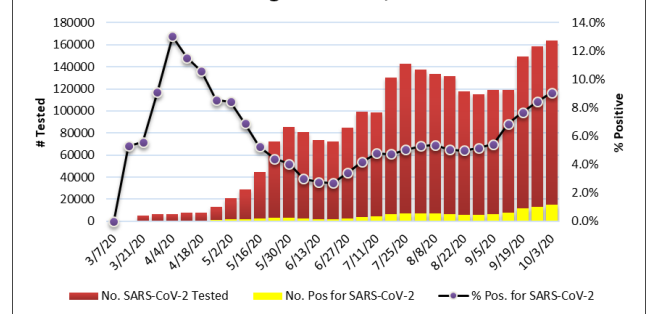
Wisconsin Influenza Update

- No influenza virus PCR positives reported in Wisconsin.

% Positive for Influenza by PCR (Wisconsin), Week Ending October 3, 2020



% Positive SARS-CoV-2 by PCR (Wisconsin), Week Ending October 3, 2020



To enhance surveillance activities for influenza viruses, the WSLH asks labs to please send:

1. Please send **all positive influenza specimens** for further characterization.

Other Surveillance Data-Wisconsin

Week Ending October 3, 2020*

Resp. Pathogen PCR	# Tested	% Positive
SARS-CoV-2	163,485	9.1↑
Rhinovirus/ Enterovirus	782	7.8
Human metapneumovirus	792	<1
Parainfluenza	785	0
Seasonal coronaviruses	25	0
Adenovirus	25	0
RSV	866	0
Influenza	1,006	0
<i>B. pertussis</i>	174	0

Respiratory

- SARS-CoV-2 and Rhinovirus/enterovirus were the predominant respiratory pathogens reported from Wisconsin clinical and public health labs.

Gastropathogens

- Giardia and campylobacter were the predominant gastropathogens reported.
- Others reported: EPEC (10.4%), EAEC (1.5%), ETEC (1.6%), Adeno 40/41 (<1.1%) and *Y. enterocolitica* (<1%).

Week Ending October 3, 2020*

GI Pathogen PCR	# Tested	% Positive
Giardia	263	3.0
Campylobacter	455	2.0
Cryptosporidium	236	1.7
Salmonella	455	1.5
STEC	369	<1
Norovirus	282	<1
Shigella	391	<1
Rotavirus	262	<1
<i>E. coli</i> O157	165	0
Sapovirus	78	0
Cyclospora	67	0

* On a weekly basis, participating Wisconsin clinical laboratories voluntarily report to WSLH the total number of tests performed, the method used for detection, and the number of those tests with positive results.