

Laboratory Surveillance Report

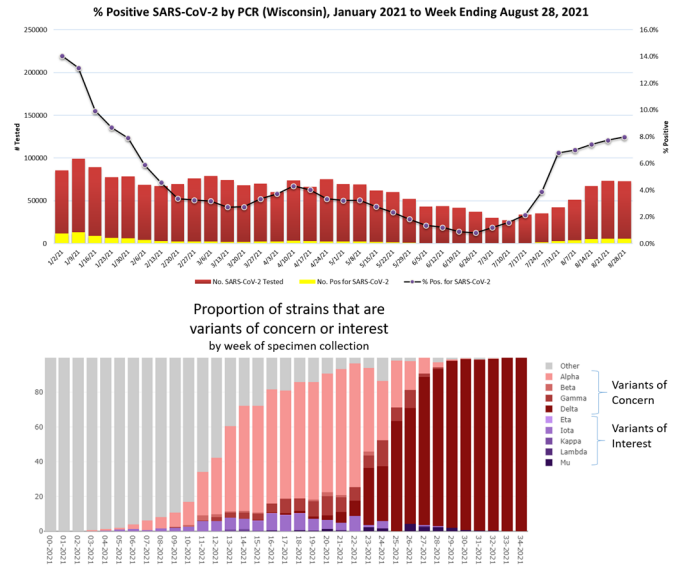
SARS-CoV-2 Surveillance Updates

Surveillance Data Synopsis

- **RSV is still increasing in Wisconsin.**
- **SARS-CoV-2 activity remains high in Wisconsin.**
- **The Delta SARS-CoV-2 variant of concern is by far the most common lineage detected.**

SARS-CoV-2 Update

- In Wisconsin, positivity was 8.0% of the 72,741 specimens tested by PCR and reported to WSLH.
- In the US, the 7 day average percent positivity is 9.6%.
- Wisconsin genomic sequencing data showed the Delta [B.1.617.2 and its sublineages] variant of concern was by far the predominant lineage detected.
- The WSLH sequencing dashboard is available at <https://dataportal.slh.wisc.edu/sc2dashboard>



To enhance surveillance activities, the WSLH asks labs to please send:

UPDATE

1. Please send **all positive** influenza specimens for further characterization.
2. Please send **a maximum of 5** SARS-CoV-2 specimens per week.

Other Surveillance Data-Wisconsin

Week Ending August 28, 2021*

Resp. Pathogen PCR	# Tested	% Positive
SARS-CoV-2	72741	8.0
RSV	1747	19.7↑
Rhinovirus/ Enterovirus	853	15.2
Parainfluenza	876	5.3
Seasonal coronaviruses	173	1.2
Adenovirus	173	<1
Human metapneumovirus	889	<1
Influenza	4785	<1
<i>B. pertussis</i>	311	0

Respiratory

- There continues to be high SARS-CoV-2 activity in Wisconsin.
- RSV activity continues to increase.

Gastropathogens

- *Campylobacter* was the predominant gastropathogen reported.
- Others detected included: EPEC (19.1%), EAEC (<1%), ETEC (1.6%), and Astrovirus (1.1%).

Week Ending August 28, 2021*

GI Pathogen PCR	# Tested	% Positive
<i>Campylobacter</i>	656	3.7
<i>Salmonella</i>	656	2.4
Sapovirus	175	2.3
<i>Cryptosporidium</i>	425	2.1
Norovirus	463	1.1
<i>Giardia</i>	425	1.6
<i>Cyclospora</i>	162	1.2
STEC	591	<1
<i>Shigella</i>	564	<1
<i>E. coli</i> 0157	334	<1
Rotavirus	446	0

* On a weekly basis, participating Wisconsin clinical laboratories voluntarily report to WSLH the total number of tests performed, the method used for detection, and the number of those tests with positive results.