

Laboratory Surveillance Report

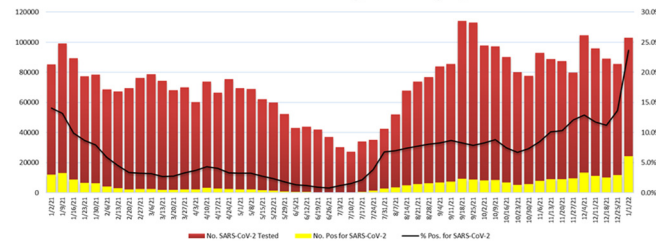
SARS-CoV-2 & Influenza Surveillance Updates

Surveillance Data Synopsis

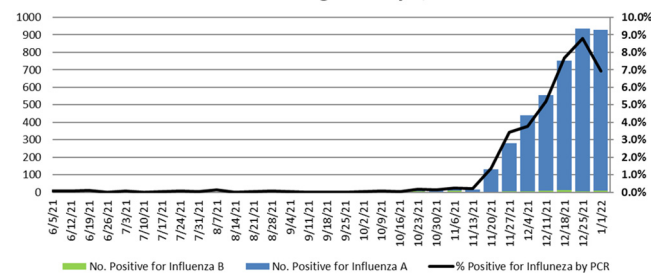
- **SARS-CoV-2 activity is high and increasing in Wisconsin.**
- **Omicron variant was the predominant lineage detected in Wisconsin (68%) and nationally (95%).**
- **The proportion of Delta variant is decreasing in Wisconsin (31%)**
- **Influenza activity is decreasing in Wisconsin (6.9%) and nationally (3.8%).**
- **The dominant Influenza subtype is H3N2.**

- In Wisconsin, SARS-CoV-2 positivity was 23.7% of the 102,871 specimens tested by PCR and reported to WSLH.
- In the US, the 7 day average SARS-CoV-2 percent positivity is 27.2%.
- Wisconsin genomic sequencing data showed Omicron [B.1.1.529/BA.1] as the predominant lineage of SARS-CoV-2 detected (68%)
- The percentage of Delta [B.1.617.2 and its sublineages] in Wisconsin is decreasing (31%)
- The WSLH sequencing dashboard is available at <https://dataportal.slh.wisc.edu/sc2dashboard>
- In the US, the influenza positivity rate is 3.8%

% Positive SARS-CoV-2 by PCR (Wisconsin), January 2021 to Week Ending January 1, 2022



% Positive for Influenza by PCR (Wisconsin), June 2021 to Week Ending January 1, 2022



To enhance surveillance activities, the WSLH asks labs to please send:

1. A sampling of specimens from influenza-related hospitalizations (e.g. 1 per week).
2. Specimens that fail to subtype (Ct <35) if subtyping for 2009 pdmH1 and H3 were performed.
3. Please send a maximum of 5 SARS-CoV-2 specimens per week.

Other Surveillance Data-Wisconsin

Week Ending January 1, 2022*

Resp. Pathogen PCR	# Tested	% Positive
SARS-CoV-2	102,871	23.7
Rhinovirus/ Enterovirus	1232	11.0
Influenza	13418	6.9
Parainfluenza	1282	3.9
Human metapneumovirus	1297	3.9
RSV	7022	3.8
Seasonal coronaviruses	183	1.6
Adenovirus	183	0.5
<i>B. pertussis</i>	387	0

Respiratory

- SARS-CoV-2 activity in WI is high and increasing.
- Influenza activity in WI is decreasing (6.9%)
- Seasonal respiratory viruses are circulating including Parainfluenza, RSV and human metapneumovirus.

Gastropathogens

- Others detected included: EPEC (6.4%), Astrovirus (5.3%), Adenovirus 40/41 (1.5%), EAEC (0.7%), ETEC (0.3%), Plesiomonas shigelloides (0.3%), Entamoeba histolytica (0.3%) and Yersinia enterocolitica (0.2%)

Week Ending January 1, 2022*

GI Pathogen PCR	# Tested	% Positive
Norovirus	366	7.1↑
Sapovirus	263	3.4
Rotavirus	362	2.8
<i>Giardia</i>	325	1.5
STEC	481	0.8
<i>Campylobacter</i>	471	0.8
<i>Cryptosporidium</i>	325	0.6
<i>Salmonella</i>	481	0.2
<i>Shigella</i>	116	0
<i>E. coli</i> O157	286	0
<i>Cyclospora</i>	249	0

* On a weekly basis, participating Wisconsin clinical laboratories voluntarily report to WSLH the total number of tests performed, the method used for detection, and the number of those tests with positive results.