



WISCONSIN DEPARTMENT
of HEALTH SERVICES

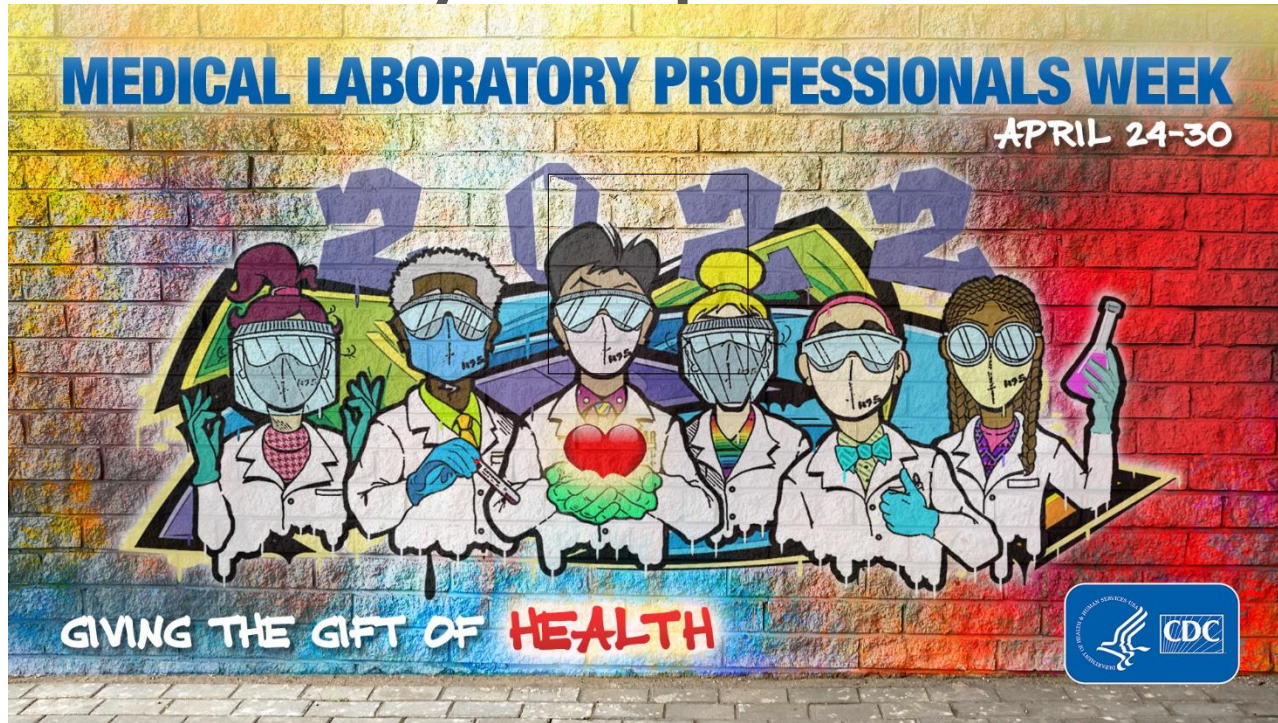
Moving Forward Together

Deputy Secretary Deb Standridge
Wisconsin Clinical Laboratory Network Conference
April 26, 2022

Thank You For Your Dedicated Partnership!

- Provided needed, timely COVID-19 test results
- Balancing other diagnostic testing needs in addition to COVID-19 workload with no loss to service
- Recognized early outbreaks
- Survived the stresses of demand and supply constraints
- Enduring worker shortages

Your Work is Vitally Important!!



COVID-19 by the Numbers



20M+

Tests completed since
March 2020

9.4M+

Vaccine doses
administered

~2M

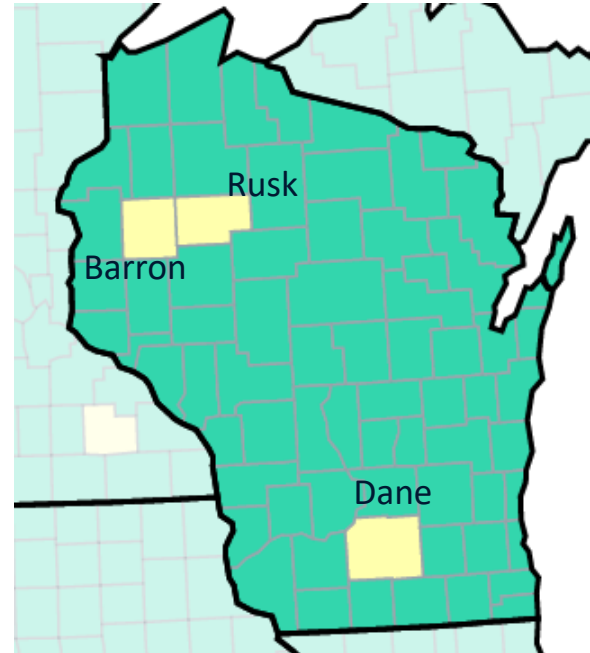
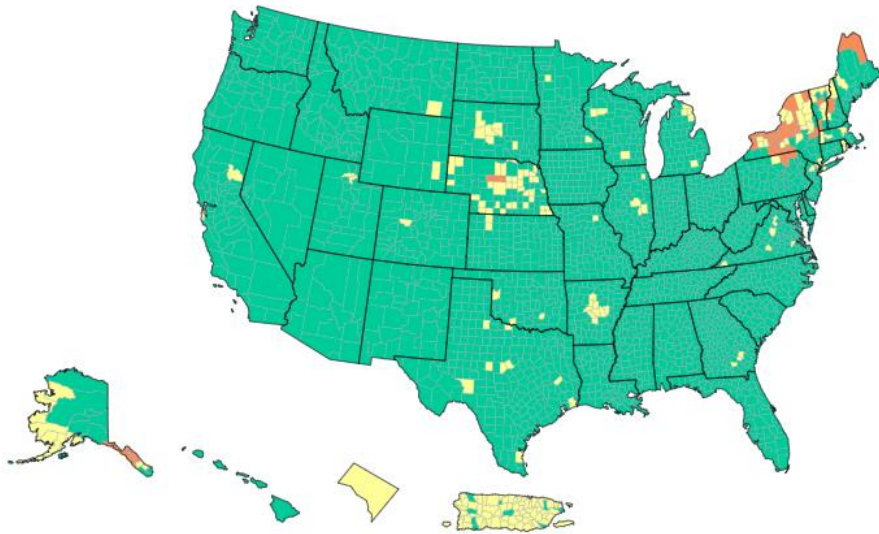
Booster/additional
vaccine doses
administered

1K+

Contract staff
placed at hospitals
and LTC facilities

COVID-19 Community Levels

● High ● Medium ● Low ● N/A

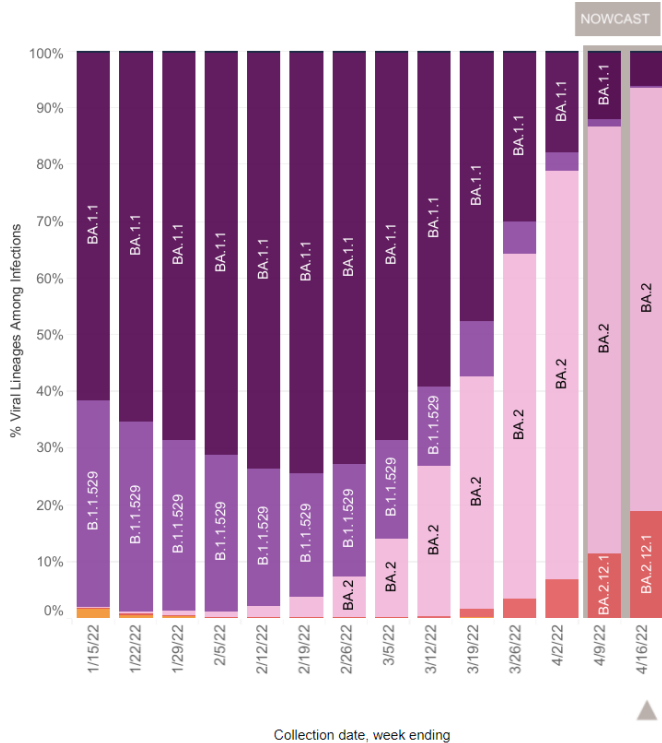


<https://www.cdc.gov/coronavirus/2019-ncov/science/community-levels.html>

BA.2 Variant

United States: 1/9/2022 – 4/16/2022

United States: 4/10/2022 – 4/16/2022 NOWCAST



USA

WHO label	Lineage #	US Class	%Total	95%PI
Omicron	BA.2	VOC	74.4%	68.3-79.7%
	BA.2.12.1	VOC	19.0%	13.4-26.0%
	BA.1.1	VOC	6.1%	5.1-7.3%
	B.1.1.529	VOC	0.5%	0.3-0.6%
Delta	B.1.617.2	VBM	0.0%	0.0-0.0%
Other	Other*		0.0%	0.0-0.0%

* Enumerated lineages are US VOC and lineages circulating above 1% nationally in at least one week period. "Other" represents the aggregation of lineages which are circulating <1% nationally during all weeks displayed.
 ** These data include Nowcast estimates, which are modeled projections that may differ from weighted estimates generated at later dates
 # AY.1-AY.133 and their sublineages are aggregated with B.1.617.2. BA.1, BA.3, BA.4, BA.5 and their sublineages (except BA.1.1 and its sublineages) are aggregated with B.1.1.529. For regional data, BA.1.1 and its sublineages are also aggregated with B.1.1.529, as they currently cannot be reliably called in each region. Except BA.2.12.1, BA.2 sublineages are aggregated with BA.2.

Get Your COVID-19 Booster(s)

Percent of Wisconsin residents who have received an additional/booster dose



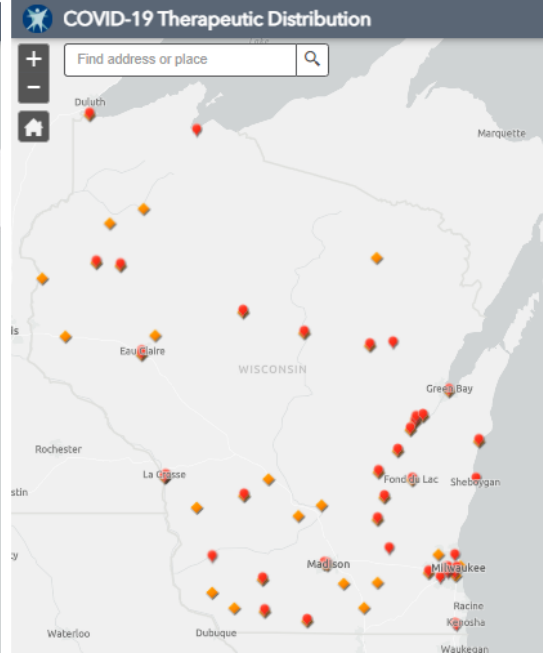
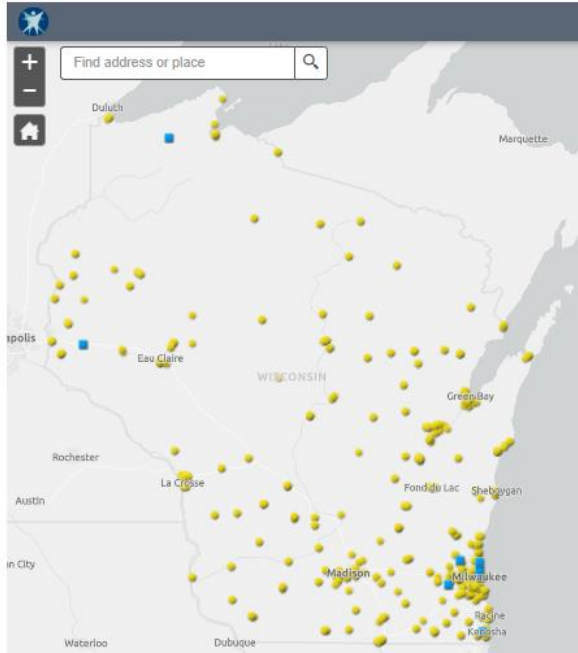
Percent	Age
38%	45-54
49%	55-64
67%	65+

COVID-19 Testing

- Increased capacity
- Coordinated response
- Improved turnaround time
- Worked through challenges
 - Supplies
 - Staffing



Therapeutics Distribution Map



Selectable map layers include:

- Molnupiravir
- Paxlovid
- Evusheld
- Bebtelovimab

dhs.wisconsin.gov/covid-19/therapeutics.htm

Workforce, Workforce, Workforce

Workforce: State Support

Healthcare workforce learning collaborative

- Strengthen and grow the next generation
- Long term sustainability
- Best practices



Workforce: Investing in the Future of Rural Health Care

Increase long-term rural health care workforce

- \$550,000 to increase access and enhance health care quality in rural Wisconsin
 - **Advanced Practice Clinician grants** help rural health care providers increase the number of physician assistants and advanced practice registered nurses
 - **Advanced Health Professionals Education and Training Grants** support education and training of professionals, such as medical assistance, mental health professionals, and nursing assistants

Workforce: State Investments

American Rescue Plan Act Funding

- Workforce Innovation Grants
- Main Street Bounce Back
- We're All in Small Business Grants
- Health Care Infrastructure



Anticipated* 2023-2025 Budget Focus Areas

- PHE Unwinding
- COVID-19 Recovery
- 21st Century LTC System
- Behavioral Health Continuum
- Caregiving and public health workforce, including:
 - Education and training pipeline
 - Job quality (benefits, childcare, transportation)
- Medicaid expansion
- Equitable opportunities to live long, healthy lives across our state



Thank **YOU** COVID Heroes!!!



<https://dhs.wisconsin.gov/thankyou>

Help Say Thank You To Your COVID Heroes!



“

Thank you to all of the staff members in the Hustisford School District, who went above and beyond during the past two years. They stepped up and did out of the ordinary things to make sure students had what they needed. Through tough times, they came through.

”

Heather
Dodge County

“

Thank you to all of our public health providers, EMTs, doctors, nurses, and all those in the health care field for your care and efforts during this pandemic.

”

Kirsten
Oneida County

“

Pete went above and beyond making sure all of our COVID clinics and testing sites went off without a hitch. He was there hours before and hours after setting up, running, cleaning, etc. He has been instrumental in making our clinics work smoothly. He is definitely a key player in our department.

”

Theresa
Bayfield County

<https://dhs.wisconsin.gov/thankyou>

Thank you!

Learn more about DHS at

<https://www.dhs.wisconsin.gov/thankyou/>



WISCONSIN DEPARTMENT
of HEALTH SERVICES