

Laboratory Surveillance Report

Influenza

- Influenza activity is **high** in Wisconsin (14.3%) and nationally (18.2%).
- H3N2 (75%) is the dominant Influenza A subtype circulating.

SARS-CoV-2

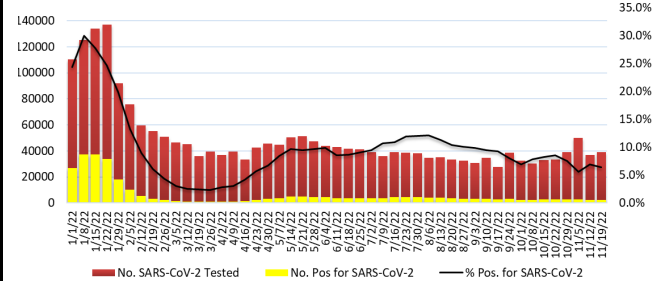
- SARS-CoV-2 activity is high in Wisconsin (6.4%) and nationally (8.3%).
- Omicron lineage BA.5 was the predominant lineage detected nationally (~50%).

SARS-CoV-2 & Influenza Surveillance Updates:

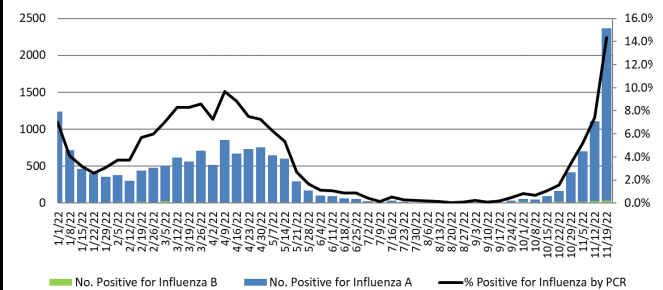
To enhance surveillance activities, please send:

- **PCR/Molecular Testing sites:**
 - ◊ **One Influenza-related hospitalization per week**
 - ◊ Influenza A specimens that fail to subtype (Ct <35)
- **University Health Sites:**
 - ◊ Up to 3 symptomatic specimens per week
- **All Testing Sites:**
 - ◊ **Up to 5** SARS-CoV-2 positive specimens per week
 - ◊ Influenza A positive specimens with:
 - International travel history
 - Swine/Avian exposure

% Positive SARS-CoV-2 by PCR (Wisconsin), January 2022 to Week Ending November 19, 2022



% Positive for Influenza by PCR (Wisconsin), January 2022 to Week Ending November 19, 2022



Links:

- The WSLH sequencing dashboard is available here: <https://dataportal.slh.wisc.edu/sc2dashboard>
- A current summary of COVID-19 data for Wisconsin can be found here: <https://www.dhs.wisconsin.gov/covid-19/data.htm>
- The influenza, RSV and respiratory virus activity graphs can be viewed here: <http://www.slh.wisc.edu/wcln-surveillance/surveillance/virology-surveillance/>
- The bacterial, viral and parasitic activity graphs can be viewed here: <http://www.slh.wisc.edu/wcln-surveillance/surveillance/gastropathogen-surveillance/>

Week Ending November 19, 2022*

Resp. Pathogen PCR	# Tested	% Positive
SARS-CoV-2	39123	6.4
RSV	11304	22.7
Rhinovirus/ Enterovirus	1164	19.2
Influenza	16497	14.3
Parainfluenza	1226	7.5
Adenovirus	152	4.2
Human metapneumovirus	1162	0.5
Seasonal coronaviruses	120	0.0
<i>B. pertussis</i>	918	0.0

Other Surveillance Data-Wisconsin:

Respiratory pathogens

- SARS-CoV-2 activity in WI is high.
- RSV and Rhinovirus/Enterovirus activities are very high.

Gastropathogens

- Other pathogens detected include: EPEC (8.4%), EAEC (2.5%), Adenovirus 40/41 (1.3%), ETEC (1.1%), Astrovirus (0.8%) and *Yersinia enterocolitica* (0.5%),

Week Ending November 19, 2022*

GI Pathogen PCR	# Tested	% Positive
<i>Campylobacter</i>	381	3.4
Norovirus	337	2.4
Sapovirus	249	2.0
<i>Salmonella</i>	381	1.6
STEC	381	1.0
<i>Cryptosporidium</i>	324	0.9
<i>Giardia</i>	324	0.9
<i>Cyclospora</i>	238	0.4
<i>E. coli</i> 0157	102	0.0
<i>Shigella</i>	326	0.0
Rotavirus	337	0.0

* On a weekly basis, participating Wisconsin clinical laboratories voluntarily report to WSLH the total number of tests performed, the method used for detection, and the number of those tests with positive results.