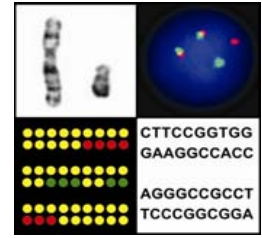


UW Cytogenetic Services

Wisconsin State Laboratory of Hygiene
University of Wisconsin-Madison
465 Henry Mall, Rm 419, Madison, WI 53706
Phone: 608.262.0402 Fax: 608.265.7818



Thank you for your interest in the UW Cytogenetic and Molecular Genetics Laboratories.

Enclosed in this kit you will find all the materials necessary for sending a buccal sample to our lab for testing.

1. Buccal collection tubes
2. Shipping containers
3. Pre-paid return mailer envelope

Please follow the provided instructions for buccal collection. It is very important that you do not eat, drink, smoke, brush your teeth or chew gum for 30 minutes before sample collection. Failure to follow the provided instructions may result in the lab's inability to perform testing. Please contact your healthcare provider for assistance with this collection if needed.

The sample should be labeled with the patient's name, date of birth, and date of collection. Once the buccal sample is collected, the collection tube can be returned to the plastic container and sealed into the biohazard bag along with the absorbent material. Enclose the contents in the provided shipper box and place in return mailer envelope.

The sample should be shipped with a completed test order form to: **UW Cytogenetic Services, 465 Henry Mall, Rm 419, Madison, WI 53706**

Please consult our website at www.slh.wisc.edu/cytogenetics/ or call us directly at 608-262-0402 with any questions.