

# Laboratory Surveillance Report

## SARS-CoV-2 & Influenza Surveillance Updates:

### Influenza

- Influenza activity is low in Wisconsin (0.8%) and nationally (0.9%).

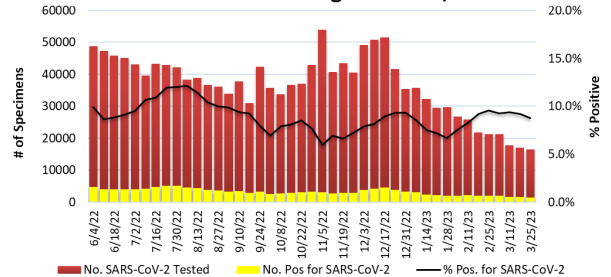
### SARS-CoV-2

- SARS-CoV-2 activity is moderate in Wisconsin (8.8%) and nationally (7.1%).
- Omicron subvariant XBB.1.5 is the dominant sub-variant circulating (85-90%)

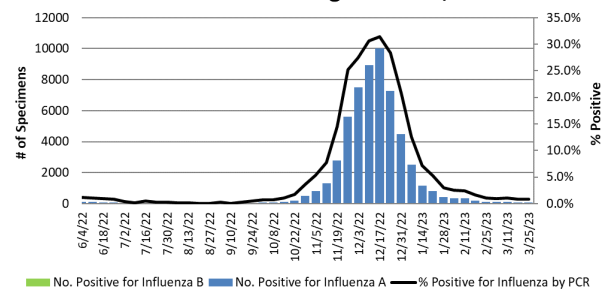
### To enhance surveillance activities, each week please send:

- **PCR/Molecular Testing sites:**
  - ◇ [One Influenza-related hospitalization](#)
  - ◇ Influenza A specimens that fail to subtype (Ct <35)
- **All Testing Sites:**
  - ◇ [Up to 5](#) SARS-CoV-2 positive specimens

% Positive SARS-CoV-2 by PCR (Wisconsin), June 2022 to Week Ending March 25, 2023



% Positive for Influenza by PCR (Wisconsin), June 2022 to Week Ending March 25, 2023



### Links:

- The WSLH sequencing dashboard is available here: <https://dataportal.slh.wisc.edu/sc2dashboard>
- A current summary of COVID-19 data for Wisconsin can be found here: <https://www.dhs.wisconsin.gov/covid-19/data.htm>
- The influenza, RSV and respiratory virus activity graphs can be viewed here: <http://www.slh.wisc.edu/wcln-surveillance/surveillance/virology-surveillance/>
- The bacterial, viral and parasitic activity graphs can be viewed here: <http://www.slh.wisc.edu/wcln-surveillance/surveillance/gastropathogen-surveillance/>

### Week Ending March 25, 2023\*

Resp. Pathogen PCR	# Tested	% Positive
SARS-CoV-2	16549	8.8
Rhinovirus/Enterovirus	826	14.4
Human metapneumovirus	894	11.2
Seasonal coronaviruses	35	5.7
Parainfluenza	843	5.1
RSV	6418	1.0
Influenza	9383	0.8
<i>B. pertussis</i>	586	0.0
Adenovirus	35	0.0

## Other Surveillance Data-Wisconsin:

### Respiratory pathogens

- Rhinovirus/Enterovirus and human Metapneumovirus activities are high

### Gastropathogens

- Other pathogens detected include: EPEC (5.3%), Astrovirus (2.9%), EAEC (2.3%), Adenovirus 40/41 (0.9%), *Yersinia enterocolitica* (0.8%), and ETEC (0.5%) .

### Week Ending March 25, 2023\*

GI Pathogen PCR	# Tested	% Positive
Norovirus	471	14.6
Sapovirus	350	3.1
<i>Campylobacter</i>	566	1.8
<i>Giardia</i>	431	1.4
<i>Salmonella</i>	555	1.4
Rotavirus	457	1.3
<i>Cryptosporidium</i>	431	1.2
<i>Shigella</i>	393	0.5
STEC	555	0.5
<i>E. coli</i> O157	159	0.0
<i>Cyclospora</i>	350	0.0

\* On a weekly basis, participating Wisconsin clinical laboratories voluntarily report to WSLH the total number of tests performed, the method used for detection, and the number of those tests with positive results.