

Laboratory Surveillance Report

Influenza

- Influenza activity is low in Wisconsin (1.4%) and nationally (1.0%).

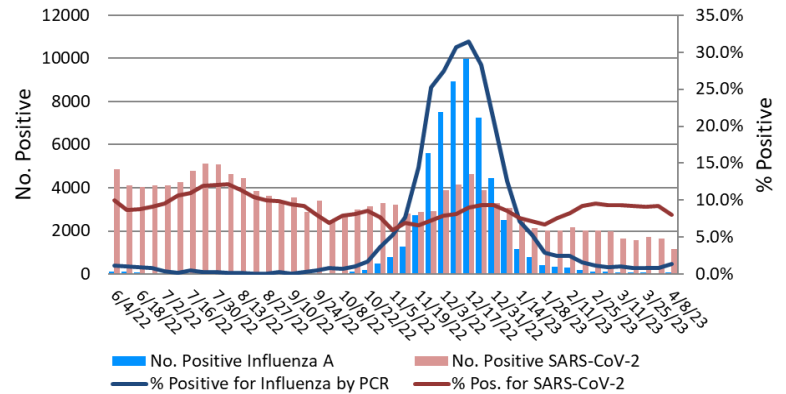
SARS-CoV-2

- SARS-CoV-2 activity is moderate in Wisconsin (8.0%) and nationally (6.2%).
- Omicron subvariant XBB.1.5 is the dominant sub-variant circulating (85-90%)

To enhance surveillance activities, each week please send:

- **PCR/Molecular Testing sites:**
 - ◇ [One Influenza-related hospitalization](#)
 - ◇ Influenza A specimens that fail to subtype (Ct <35)
- **All Testing Sites:**
 - ◇ [Up to 5](#) SARS-CoV-2 positive specimens

% Positive for Influenza and SARS-CoV-2 by PCR (Wisconsin), June 2022 to Week Ending April 8, 2023



31st Annual
Wisconsin Virology Conference
Thursday June 8th, 2023
Registration opening soon!

Links:

- The WSLH sequencing dashboard is available here: <https://dataportal.slh.wisc.edu/sc2dashboard>
- A current summary of COVID-19 data for Wisconsin can be found here: <https://www.dhs.wisconsin.gov/covid-19/data.htm>
- The influenza, RSV and respiratory virus activity graphs can be viewed here: <http://www.slh.wisc.edu/wcln-surveillance/surveillance/virology-surveillance/>
- The bacterial, viral and parasitic activity graphs can be viewed here: <http://www.slh.wisc.edu/wcln-surveillance/surveillance/gastropathogen-surveillance/>

Week Ending April 8, 2023*

Resp. Pathogen PCR	# Tested	% Positive
SARS-CoV-2	16549	8.0
Human metapneumovirus	899	13.3
Rhinovirus/Enterovirus	835	12.1
Parainfluenza	883	6.8
Adenovirus	29	3.4
Seasonal coronaviruses	291	3.4
Influenza	8868	1.4
RSV	5685	0.8
<i>B. pertussis</i>	499	0.0

Other Surveillance Data-Wisconsin:

Respiratory pathogens

- Rhinovirus/Enterovirus and human Metapneumovirus activities are high

Gastropathogens

- Other pathogens detected include: Astrovirus (4.3%), EPEC (3.4%), EAEC (2.8%), ETEC (1.6%), and *Yersinia enterocolitica* (0.8%).

Week Ending April 8, 2023*

GI Pathogen PCR	# Tested	% Positive
Norovirus	360	12.5
Sapovirus	324	4.0
Rotavirus	354	2.5
<i>Campylobacter</i>	465	1.9
<i>Cryptosporidium</i>	403	1.2
<i>Salmonella</i>	465	1.7
STEC	465	0.6
<i>Giardia</i>	403	0.2
<i>Shigella</i>	294	0.0
<i>E. coli</i> O157	157	0.0
<i>Cyclospora</i>	324	0.0

* On a weekly basis, participating Wisconsin clinical laboratories voluntarily report to WSLH the total number of tests performed, the method used for detection, and the number of those tests with positive results.