

Laboratory Surveillance Report

Influenza

- Influenza activity is low in Wisconsin (0.8%) and nationally (0.8%).

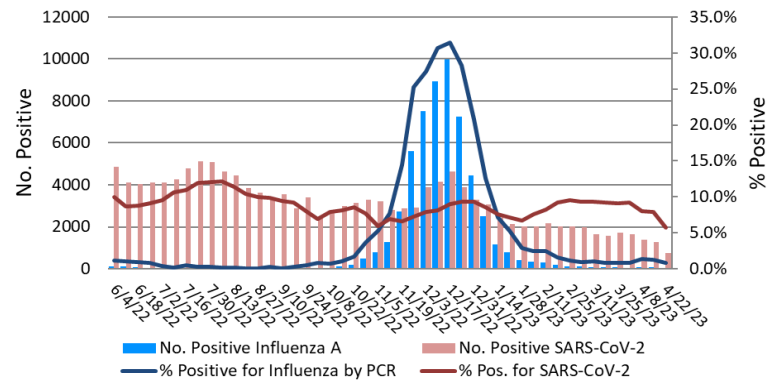
SARS-CoV-2

- SARS-CoV-2 activity is moderate in Wisconsin (5.8%) and nationally (6.5%).
- Omicron subvariant XBB.1.5 is the dominant sub-variant circulating (~80%)

To enhance surveillance activities,
each week please send:

- **PCR/Molecular Testing sites:**
 - ◇ [One Influenza-related hospitalization](#)
 - ◇ Influenza A specimens that fail to subtype (Ct <35)
- **All Testing Sites:**
 - ◇ [Up to 5](#) SARS-CoV-2 positive specimens

% Positive for Influenza and SARS-CoV-2 by PCR
(Wisconsin), June 2022 to Week Ending April 22, 2023



31st Annual

Wisconsin Virology Conference

Thursday June 8th, 2023

Registration now open!

[CLICK HERE](#)

Links:

- The WSLH sequencing dashboard is available here: <https://dataportal.slh.wisc.edu/sc2dashboard>
- A current summary of COVID-19 data for Wisconsin can be found here: <https://www.dhs.wisconsin.gov/covid-19/data.htm>
- The influenza, RSV and respiratory virus activity graphs can be viewed here: <http://www.slh.wisc.edu/wcln-surveillance/surveillance/virology-surveillance/>
- The bacterial, viral and parasitic activity graphs can be viewed here: <http://www.slh.wisc.edu/wcln-surveillance/surveillance/gastropathogen-surveillance/>

Week Ending April 22, 2023*

Resp. Pathogen PCR	# Tested	% Positive
SARS-CoV-2	13264	5.8
Human metapneumovirus	773	11.6
Rhinovirus/Enterovirus	730	10.5
Seasonal coronaviruses	37	8.1
Parainfluenza	733	5.9
Influenza	6516	0.8
RSV	4457	0.6
Adenovirus	37	0.0
<i>B. pertussis</i>	407	0.0

Other Surveillance Data-Wisconsin:

Respiratory pathogens

- Rhinovirus/Enterovirus and human Metapneumovirus activities are high

Gastropathogens

- Other pathogens detected include: Astrovirus (2.9%), EPEC (3.7%), EAEC (2.4%), ETEC (1.8%), and *Yersinia enterocolitica* (0.8%) EIEC (0.4%), and Adenovirus 40/41 (0.2%).

Week Ending April 22, 2023*

GI Pathogen PCR	# Tested	% Positive
Norovirus	461	8.0
Sapovirus	411	3.9
Rotavirus	449	3.8
<i>Campylobacter</i>	654	2.0
<i>Salmonella</i>	546	1.5
<i>Giardia</i>	491	1.2
STEC	546	0.5
<i>Cryptosporidium</i>	491	0.4
<i>Shigella</i>	323	0.0
<i>E. coli</i> O157	103	0.0
<i>Cyclospora</i>	411	0.0

* On a weekly basis, participating Wisconsin clinical laboratories voluntarily report to WSLH the total number of tests performed, the method used for detection, and the number of those tests with positive results.