

# Laboratory Surveillance Report

## Influenza

- Influenza activity is low in Wisconsin (0.8%) and nationally (0.9%).

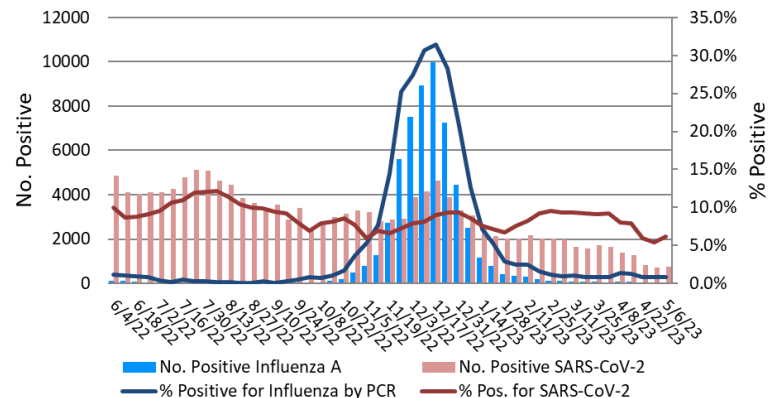
## SARS-CoV-2

- SARS-CoV-2 activity is moderate in Wisconsin (6.2%).
- Omicron subvariant XBB.1.5 is the dominant sub-variant circulating (~70-80%)

To enhance surveillance activities,  
each week please send:

- **PCR/Molecular Testing sites:**
  - ◇ [One Influenza-related hospitalization](#)
  - ◇ Influenza A specimens that fail to subtype (Ct <35)
- **All Testing Sites:**
  - ◇ [Up to 5](#) SARS-CoV-2 positive specimens

% Positive for Influenza and SARS-CoV-2 by PCR  
(Wisconsin), June 2022 to Week Ending May 6, 2023



31st Annual



Wisconsin Virology Conference

Thursday June 8th, 2023

Registration now open!

[CLICK HERE](#)

## Links:

- The WSLH sequencing dashboard is available here: <https://dataportal.slh.wisc.edu/sc2dashboard>
- A current summary of COVID-19 data for Wisconsin can be found here: <https://www.dhs.wisconsin.gov/covid-19/data.htm>
- The influenza, RSV and respiratory virus activity graphs can be viewed here: <http://www.slh.wisc.edu/wcln-surveillance/surveillance/virology-surveillance/>
- The bacterial, viral and parasitic activity graphs can be viewed here: <http://www.slh.wisc.edu/wcln-surveillance/surveillance/gastropathogen-surveillance/>

## Week Ending May 6, 2023\*

Resp. Pathogen PCR	# Tested	% Positive
SARS-CoV-2	13264	6.2
Rhinovirus/ Enterovirus	785	19.6
Parainfluenza	787	9.0
Human metapneumovirus	826	6.9
Seasonal coronaviruses	24	4.2
Influenza	5719	0.8
RSV	4054	0.3
Adenovirus	24	0.0
<i>B. pertussis</i>	385	0.0

## Other Surveillance Data-Wisconsin:

### Respiratory pathogens

- Rhinovirus/Enterovirus and Parainfluenza virus activities are high

### Gastropathogens

- Other pathogens detected include: EPEC (2.7%), EAEC (2.6%), Astrovirus (2.4%), ETEC (1.7%), Adenovirus 40/41 (0.5%), EIEC (0.4%), *Vibrio cholera* (0.3%), *Entamoeba histolytica* (0.2%) and *Yersinia enterocolitica* (0.2%).

## Week Ending May 6, 2023\*

GI Pathogen PCR	# Tested	% Positive
Norovirus	409	9.3
Rotavirus	405	4.2
Sapovirus	378	2.6
<i>Campylobacter</i>	498	2.4
<i>E. coli</i> O157	122	1.6
STEC	498	1.4
<i>Salmonella</i>	498	0.8
<i>Giardia</i>	471	0.4
<i>Cyclospora</i>	378	0.3
<i>Cryptosporidium</i>	471	0.2
<i>Shigella</i>	286	0.0

\* On a weekly basis, participating Wisconsin clinical laboratories voluntarily report to WSLH the total number of tests performed, the method used for detection, and the number of those tests with positive results.