

Laboratory Surveillance Report

Influenza

- Influenza activity is low in Wisconsin (0.6%) and nationally (1.1%).

SARS-CoV-2

- SARS-CoV-2 activity is moderate in Wisconsin (5.4%).
- Omicron subvariant XBB.1.5 is the dominant sub-variant circulating (~70-80%)

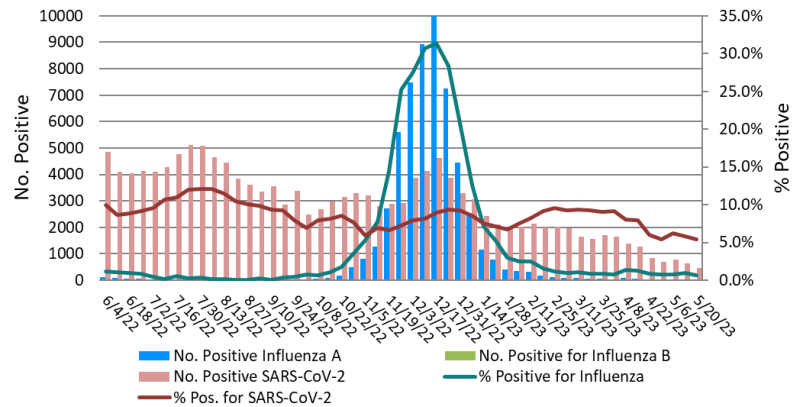
To enhance surveillance activities,
each week please send:

- **PCR/Molecular Testing sites:**
 - ◇ [One Influenza-related hospitalization](#)
 - ◇ Influenza A specimens that fail to subtype (Ct <35)
- **All Testing Sites:**
 - ◇ [Up to 5](#) SARS-CoV-2 positive specimens

Links:

- The WSLH sequencing dashboard is available here: <https://dataportal.slh.wisc.edu/sc2dashboard>
- A current summary of COVID-19 data for Wisconsin can be found here: <https://www.dhs.wisconsin.gov/covid-19/data.htm>
- The influenza, RSV and respiratory virus activity graphs can be viewed here: <http://www.slh.wisc.edu/wcln-surveillance/surveillance/virology-surveillance/>
- The bacterial, viral and parasitic activity graphs can be viewed here: <http://www.slh.wisc.edu/wcln-surveillance/surveillance/gastropathogen-surveillance/>

% Positive for Influenza and SARS-CoV-2 by PCR (Wisconsin),
June 2022 to Week Ending May 20, 2023



31st Annual



Wisconsin Virology Conference

Thursday June 8th, 2023

Registration closes May 31st!

[CLICK HERE](#)

Week Ending May 20, 2023*

| Resp. Pathogen PCR | # Tested | % Positive |
|----------------------------|----------|------------|
| SARS-CoV-2 | 8728 | 5.4 |
| Rhinovirus/ Enterovirus | 577 | 19.2 |
| Parainfluenza | 589 | 10.2 |
| Seasonal coronaviruses | 19 | 5.3 |
| Human metapneumovirus | 616 | 3.6 |
| <i>B. pertussis</i> | 247 | 0.8 |
| Influenza | 4509 | 0.6 |
| RSV | 3185 | 0.3 |
| Adenovirus | 19 | 0.0 |

Other Surveillance Data-Wisconsin:

Respiratory pathogens

- Rhinovirus/Enterovirus and Parainfluenza virus activities are high.

Gastropathogens

- Other pathogens detected include: EPEC (5.1%), EAEC (3.7%), ETEC (2.1%), Adenovirus 40/41 (1.7%), Astrovirus (1.6%) and *Yersinia enterocolitica* (0.9%).

Week Ending May 20, 2023*

| GI Pathogen PCR | # Tested | % Positive |
|------------------------|----------|------------|
| Norovirus | 355 | 7.3 |
| Rotavirus | 352 | 5.4 |
| Sapovirus | 299 | 2.7 |
| <i>Campylobacter</i> | 418 | 2.4 |
| <i>Salmonella</i> | 355 | 1.7 |
| <i>Giardia</i> | 369 | 1.1 |
| STEC | 418 | 1.0 |
| <i>Cryptosporidium</i> | 367 | 0.8 |
| <i>Cyclospora</i> | 299 | 0.3 |
| <i>E. coli</i> O157 | 52 | 0.0 |
| <i>Shigella</i> | 241 | 0.0 |

* On a weekly basis, participating Wisconsin clinical laboratories voluntarily report to WSLH the total number of tests performed, the method used for detection, and the number of those tests with positive results.