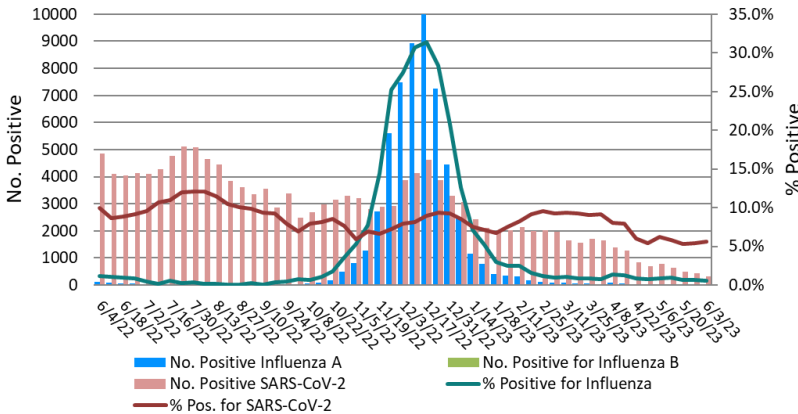


Laboratory Surveillance Report

**% Positive for Influenza and SARS-CoV-2 by PCR (Wisconsin),
June 2022 to Week Ending June 3, 2023**



Influenza

- Influenza activity is low in Wisconsin (0.5%) and nationally (1.1%).

SARS-CoV-2

- SARS-CoV-2 activity is moderate in Wisconsin (5.6%).
- Omicron subvariant XBB.1.5 is the dominant subvariant circulating (~60-70%)

To enhance surveillance activities, each week please send:

- **PCR/Molecular Testing sites:**
 - ◊ **One Influenza-related hospitalization**
 - ◊ Influenza A specimens that fail to subtype (Ct <35)
- **All Testing Sites:**
 - ◊ **Up to 5** SARS-CoV-2 positive specimens

Links:

- The WSLH sequencing dashboard is available here: <https://dataportal.slh.wisc.edu/sc2dashboard>
- A current summary of COVID-19 data for Wisconsin can be found here: <https://www.dhs.wisconsin.gov/covid-19/data.htm>
- The influenza, RSV and respiratory virus activity graphs can be viewed here: <http://www.slh.wisc.edu/wcln-surveillance/surveillance/virology-surveillance/>
- The bacterial, viral and parasitic activity graphs can be viewed here: <http://www.slh.wisc.edu/wcln-surveillance/surveillance/gastropathogen-surveillance/>

Week Ending May 20, 2023*

Resp. Pathogen PCR	# Tested	% Positive
SARS-CoV-2	5732	5.6
Rhinovirus/ Enterovirus	441	14.7
Adenovirus	10	10.0
Parainfluenza	470	8.3
Human metapneumovirus	476	4.0
Influenza	3012	0.5
RSV	2547	0.1
<i>B. pertussis</i>	220	0
Seasonal coronaviruses	10	0

Other Surveillance Data-Wisconsin:

Respiratory pathogens

- Rhinovirus/Enterovirus activity is high.

Gastropathogens

- Other pathogens detected include: EPEC (6.9%), EAEC (2.3%), ETEC (1.6%), *Yersinia enterocolitica* (1.2%), Astrovirus (0.8%) and Adenovirus 40/41 (0.4%).

Week Ending May 20, 2023*

GI Pathogen PCR	# Tested	% Positive
Norovirus	298	7.0
Rotavirus	293	6.1
<i>Campylobacter</i>	386	2.6
<i>Salmonella</i>	386	2.1
<i>Cryptosporidium</i>	327	2.1
STEC	386	1.8
Sapovirus	263	0.8
<i>Shigella</i>	299	0.7
<i>Giardia</i>	327	0.6
<i>E. coli</i> O157	102	0.0
<i>Cyclospora</i>	263	0.0

* On a weekly basis, participating Wisconsin clinical laboratories voluntarily report to WSLH the total number of tests performed, the method used for detection, and the number of those tests with positive results.