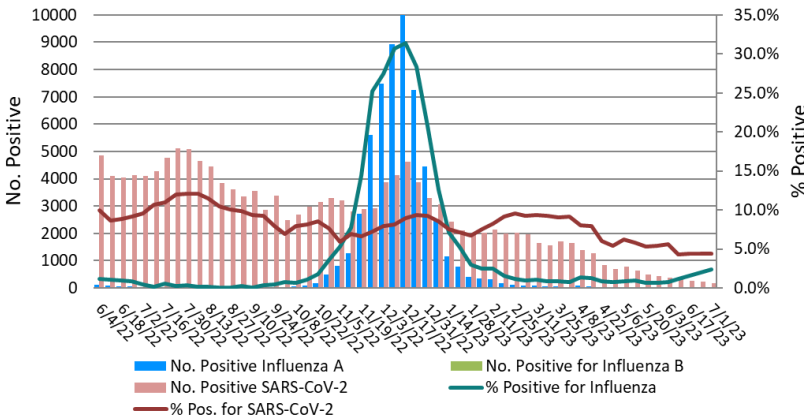


Laboratory Surveillance Report

% Positive for Influenza and SARS-CoV-2 by PCR (Wisconsin),
June 2022 to Week Ending July 1, 2023



Influenza

- Influenza activity is low in Wisconsin (0.6%) and nationally (1.2%).

SARS-CoV-2

- SARS-CoV-2 activity is moderate in Wisconsin (4.4%).
- Omicron subvariant XBB.1.5 is the dominant subvariant circulating (~35-45%)

To enhance surveillance activities during the off-season, each week please send:

- ◇ **All influenza positive specimens**
- ◇ **Up to 5 SARS-CoV-2 positive specimens**

Links:

- The WSLH sequencing dashboard is available here: <https://dataportal.slh.wisc.edu/sc2dashboard>
- A current summary of COVID-19 data for Wisconsin can be found here: <https://www.dhs.wisconsin.gov/covid-19/data.htm>
- The influenza, RSV and respiratory virus activity graphs can be viewed here: <http://www.slh.wisc.edu/wcln-surveillance/surveillance/virology-surveillance/>
- The bacterial, viral and parasitic activity graphs can be viewed here: <http://www.slh.wisc.edu/wcln-surveillance/surveillance/gastropathogen-surveillance/>

Week Ending July 1, 2023*

Resp. Pathogen PCR	# Tested	% Positive
SARS-CoV-2	3883	4.4
Rhinovirus/ Enterovirus	425	14.1
Parainfluenza	436	6.2
Influenza	2107	0.6
RSV	1642	0.1
Human metapneumovirus	402	0.0
Adenovirus	3	0.0
<i>B. pertussis</i>	194	0.0
Seasonal coronaviruses	3	0.0

Other Surveillance Data-Wisconsin:

Respiratory pathogens

- Rhinovirus/Enterovirus activity is high.

Gastropathogens

- Other pathogens detected include: EPEC (6.3%), EAEC (4.5%), ETEC (1.2%), *Yersinia enterocolitica* (0.9%), Adenovirus 40/41 (0.3%), Astrovirus (0.3%), *Plesiomonas shigelloides* (0.3%), *Vibrio cholera* (0.3%) and *Entamoeba histolytica* (0.3%).

Week Ending July 1, 2023*

GI Pathogen PCR	# Tested	% Positive
Norovirus	336	5.7
<i>Campylobacter</i>	424	4.2
Rotavirus	313	3.5
<i>Salmonella</i>	410	2.0
STEC	410	2.0
Sapovirus	289	1.7
<i>E. coli</i> 0157	96	1.0
<i>Cryptosporidium</i>	369	0.8
<i>Cyclospora</i>	289	0.7
<i>Shigella</i>	307	0.3
<i>Giardia</i>	369	0.3

* On a weekly basis, participating Wisconsin clinical laboratories voluntarily report to WSLH the total number of tests performed, the method used for detection, and the number of those tests with positive results.