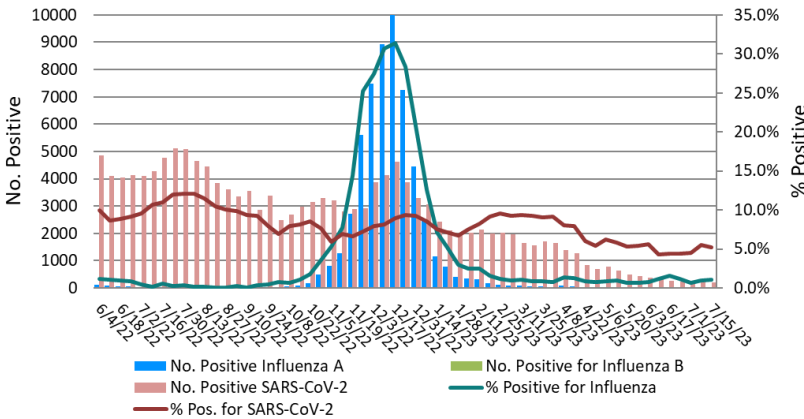


Laboratory Surveillance Report

% Positive for Influenza and SARS-CoV-2 by PCR (Wisconsin),
June 2022 to Week Ending July 15, 2023



Influenza

• Influenza activity is low in Wisconsin (1.1%) and nationally (0.9%).

SARS-CoV-2

• SARS-CoV-2 activity is moderate in Wisconsin (5.2%).

To enhance surveillance activities during the off-season, each week please send:

- ◇ **All influenza positive specimens**
- ◇ **Up to 5 SARS-CoV-2 positive specimens**

Links:

- The WSLH sequencing dashboard is available here: <https://dataportal.slh.wisc.edu/sc2dashboard>
- A current summary of COVID-19 data for Wisconsin can be found here: <https://www.dhs.wisconsin.gov/covid-19/data.htm>
- The influenza, RSV and respiratory virus activity graphs can be viewed here: <http://www.slh.wisc.edu/wcln-surveillance/surveillance/virology-surveillance/>
- The bacterial, viral and parasitic activity graphs can be viewed here: <http://www.slh.wisc.edu/wcln-surveillance/surveillance/gastropathogen-surveillance/>

Week Ending July 15, 2023*

Resp. Pathogen PCR	# Tested	% Positive
SARS-CoV-2	3822	5.2
Rhinovirus/ Enterovirus	406	13.3
Parainfluenza	408	6.6
Human metapneumovirus	414	1.9
Influenza	1940	1.1
RSV	1520	0.4
Adenovirus	5	0.0
<i>B. pertussis</i>	185	0.0
Seasonal coronaviruses	5	0.0

Other Surveillance Data-Wisconsin:

Respiratory pathogens

- Rhinovirus/Enterovirus activity is high.

Gastropathogens

- Other pathogens detected include: *Plesiomonas shigelloides* (1.0%), *Yersinia enterocolitica* (0.7%), Adenovirus 40/41 (0.5%) and Astrovirus (0.3%).

Week Ending July 15, 2023*

GI Pathogen PCR	# Tested	% Positive
Norovirus	389	6.2
Rotavirus	405	4.0
<i>Salmonella</i>	484	3.3
<i>Campylobacter</i>	485	2.7
STEC	484	2.1
<i>Cyclospora</i>	368	1.6
<i>Giardia</i>	454	0.7
<i>Cryptosporidium</i>	454	0.4
<i>Shigella</i>	293	0.3
Sapovirus	368	0.3
<i>E. coli</i> 0157	105	0.0

* On a weekly basis, participating Wisconsin clinical laboratories voluntarily report to WSLH the total number of tests performed, the method used for detection, and the number of those tests with positive results.