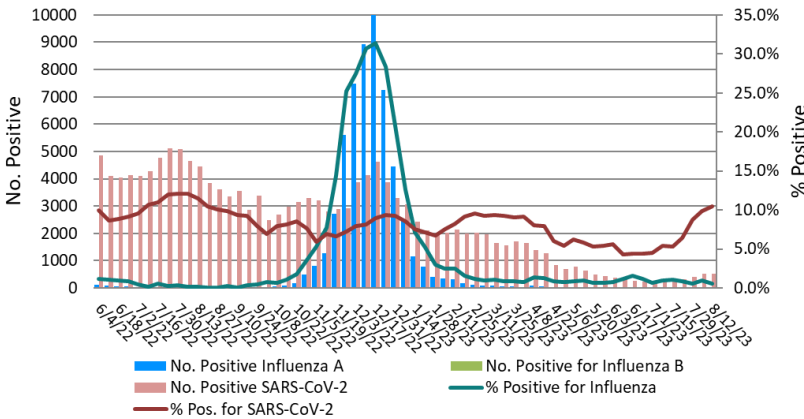


Laboratory Surveillance Report

% Positive for Influenza and SARS-CoV-2 by PCR (Wisconsin), June 2022 to Week Ending August 12, 2023



Influenza

- Influenza activity is low in Wisconsin (0.5%) and nationally (0.8%).

SARS-CoV-2

- SARS-CoV-2 activity is **increasing** in Wisconsin (10.5%).
- Omicron subvariant EG.5 is emerging as the dominant lineage circulating (~15%)

To enhance surveillance activities during the off-season, each week please send:

- ◇ **All influenza positive specimens**
- ◇ **Up to 5 SARS-CoV-2 positive specimens**

Links:

- The WSLH sequencing dashboard is available here: <https://dataportal.slh.wisc.edu/sc2dashboard>
- A current summary of COVID-19 data for Wisconsin can be found here: <https://www.dhs.wisconsin.gov/covid-19/data.htm>
- The influenza, RSV and respiratory virus activity graphs can be viewed here: <http://www.slh.wisc.edu/wcln-surveillance/surveillance/virology-surveillance/>
- The bacterial, viral and parasitic activity graphs can be viewed here: <http://www.slh.wisc.edu/wcln-surveillance/surveillance/gastropathogen-surveillance/>

Week Ending Aug 12, 2023*

| Resp. Pathogen PCR | # Tested | % Positive |
|------------------------|----------|------------|
| SARS-CoV-2 | 4953 | 10.5 ↑ |
| Rhinovirus/Enterovirus | 453 | 13.0 |
| Parainfluenza | 437 | 3.4 |
| Human metapneumovirus | 458 | 1.1 |
| <i>B. pertussis</i> | 224 | 0.9 |
| Influenza | 2675 | 0.5 |
| RSV | 2013 | 0.2 |
| Adenovirus | 5 | 0.0 |
| Seasonal coronaviruses | 5 | 0.0 |

Other Surveillance Data-Wisconsin:

Respiratory pathogens

- Rhinovirus/Enterovirus and SARS-CoV-2 activities are high.

Gastropathogens

- Other pathogens detected include: *Yersinia enterocolitica* (0.9%), Adenovirus 40/41 (0.8%), Astrovirus (0.8%), *Plesiomonas shigelloides* (0.4%), and *Entamoeba histolytica* (0.2%).

Week Ending Aug 12, 2023*

| GI Pathogen PCR | # Tested | % Positive |
|------------------------|----------|------------|
| <i>Campylobacter</i> | 582 | 7.2 |
| Norovirus | 505 | 6.5 |
| Rotavirus | 503 | 2.0 |
| <i>Cryptosporidium</i> | 570 | 1.9 |
| <i>Salmonella</i> | 576 | 1.6 |
| Sapovirus | 472 | 1.5 |
| STEC | 582 | 0.9 |
| <i>Cyclospora</i> | 472 | 0.8 |
| <i>Giardia</i> | 570 | 0.5 |
| <i>Shigella</i> | 315 | 0.6 |
| <i>E. coli</i> 0157 | 145 | 0.0 |

* On a weekly basis, participating Wisconsin clinical laboratories voluntarily report to WSLH the total number of tests performed, the method used for detection, and the number of those tests with positive results.

