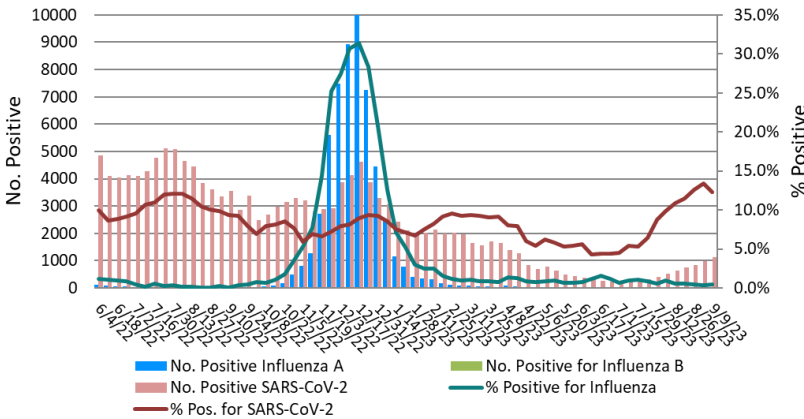


Laboratory Surveillance Report

% Positive for Influenza and SARS-CoV-2 by PCR (Wisconsin), June 2022 to Week Ending September 9, 2023



Influenza

- Influenza activity is low in Wisconsin (0.5%) and nationally (0.7%).

SARS-CoV-2

- SARS-CoV-2 activity is **HIGH** in Wisconsin (12.3%).
- Omicron subvariant EG.5 is emerging as the dominant lineage circulating (~20-25%)

To enhance surveillance activities during the off-season, each week please send:

- ◇ **All influenza positive specimens**
- ◇ **Up to 5 SARS-CoV-2 positive specimens**

Links:

- The WSLH sequencing dashboard is available here: <https://dataportal.slh.wisc.edu/sc2dashboard>
- A current summary of COVID-19 data for Wisconsin can be found here: <https://www.dhs.wisconsin.gov/covid-19/data.htm>
- The influenza, RSV and respiratory virus activity graphs can be viewed here: <http://www.slh.wisc.edu/wcln-surveillance/surveillance/virology-surveillance/>
- The bacterial, viral and parasitic activity graphs can be viewed here: <http://www.slh.wisc.edu/wcln-surveillance/surveillance/gastropathogen-surveillance/>

Week Ending Sept 9, 2023*

Resp. Pathogen PCR	# Tested	% Positive
SARS-CoV-2	9244	12.3
Rhinovirus/Enterovirus	562	16.2
Parainfluenza	565	3.4
RSV	3559	0.6
Influenza	5219	0.5
Human metapneumovirus	548	0.2
<i>B. pertussis</i>	197	0.0
Adenovirus	2	0.0
Seasonal coronaviruses	2	0.0

Other Surveillance Data-Wisconsin:

Respiratory pathogens

- Rhinovirus/Enterovirus and SARS-CoV-2 activities are high.

Gastropathogens

- Other pathogens detected include: *Plesiomonas shigelloides* (0.8%), Adenovirus 40/41 (0.3%), and *Yersinia enterocolitica* (0.2%).

Week Ending Sept 9, 2023*

GI Pathogen PCR	# Tested	% Positive
Norovirus	430	6.3
<i>Campylobacter</i>	529	4.2
<i>Salmonella</i>	537	2.2
<i>Giardia</i>	416	2.4
STEC	476	2.0
<i>E. coli</i> 0157	121	0.8
Rotavirus	433	0.7
Sapovirus	374	0.5
<i>Cryptosporidium</i>	416	0.5
<i>Shigella</i> /EIEC	506	0.4
<i>Cyclospora</i>	374	0.3

* On a weekly basis, participating Wisconsin clinical laboratories voluntarily report to WSLH the total number of tests performed, the method used for detection, and the number of those tests with positive results.

