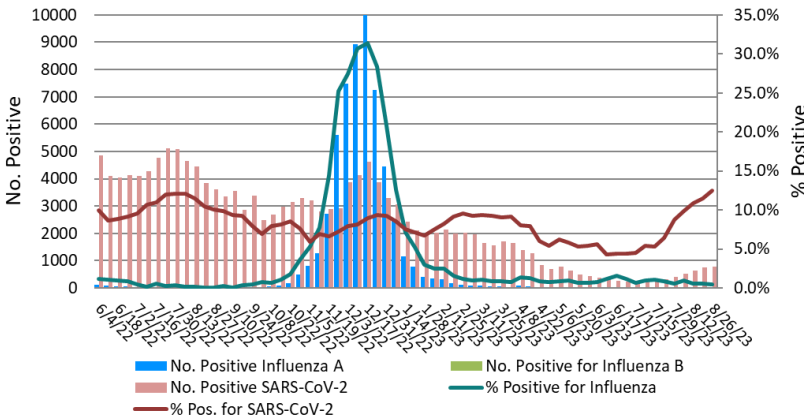


Laboratory Surveillance Report

% Positive for Influenza and SARS-CoV-2 by PCR (Wisconsin),
June 2022 to Week Ending August 26, 2023



Influenza

- Influenza activity is low in Wisconsin (0.5%) and nationally (0.8%).

SARS-CoV-2

- SARS-CoV-2 activity is **HIGH** in Wisconsin (12.5%).
- Omicron subvariant EG.5 is emerging as the dominant lineage circulating (~15-20%)

To enhance surveillance activities during the off-season, each week please send:

- ◇ **All influenza positive specimens**
- ◇ **Up to 5 SARS-CoV-2 positive specimens**

Links:

- The WSLH sequencing dashboard is available here: <https://dataportal.slh.wisc.edu/sc2dashboard>
- A current summary of COVID-19 data for Wisconsin can be found here: <https://www.dhs.wisconsin.gov/covid-19/data.htm>
- The influenza, RSV and respiratory virus activity graphs can be viewed here: <http://www.slh.wisc.edu/wcln-surveillance/surveillance/virology-surveillance/>
- The bacterial, viral and parasitic activity graphs can be viewed here: <http://www.slh.wisc.edu/wcln-surveillance/surveillance/gastropathogen-surveillance/>

Week Ending Aug 26, 2023*

Resp. Pathogen PCR	# Tested	% Positive
SARS-CoV-2	6346	12.5
Rhinovirus/ Enterovirus	469	14.9
Parainfluenza	466	3.2
<i>B. pertussis</i>	131	0.8
RSV	2568	0.5
Influenza	3508	0.5
Human metapneumovirus	461	0.4
Adenovirus	5	0.0
Seasonal coronaviruses	5	0.0

Other Surveillance Data-Wisconsin:

Respiratory pathogens

- Rhinovirus/Enterovirus and SARS-CoV-2 activities are high.

Gastropathogens

- Other pathogens detected include: Adenovirus 40/41 (1.1%), *Plesiomonas shigelloides* (0.3%), *Vibrio cholerae* (0.3%) and *Yersinia enterocolitica* (0.2%).

Week Ending Aug 26, 2023*

GI Pathogen PCR	# Tested	% Positive
Norovirus	429	5.6
<i>Campylobacter</i>	436	4.6
<i>Salmonella</i>	436	4.1
<i>E. coli</i> O157	97	3.1
STEC	424	1.9
<i>Cryptosporidium</i>	435	1.8
Sapovirus	376	1.3
Rotavirus	426	0.9
<i>Giardia</i>	435	0.9
<i>Cyclospora</i>	376	0.8
<i>Shigella</i>	271	0.4

* On a weekly basis, participating Wisconsin clinical laboratories voluntarily report to WSLH the total number of tests performed, the method used for detection, and the number of those tests with positive results.

