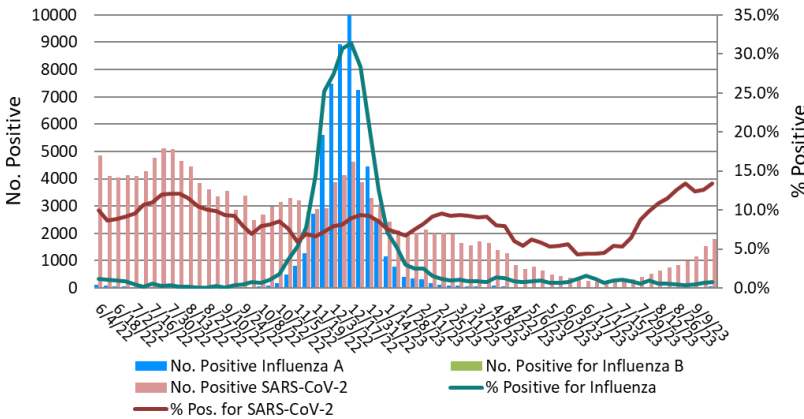


# Laboratory Surveillance Report

% Positive for Influenza and SARS-CoV-2 by PCR (Wisconsin),  
June 2022 to Week Ending September 23, 2023



## Influenza

- Influenza activity is low in Wisconsin (0.7%) and nationally (0.9%).

## SARS-CoV-2

- SARS-CoV-2 activity is **HIGH** in Wisconsin (13.4%).
- Omicron subvariant EG.5 is emerging as the dominant lineage circulating (~20-25%)

To enhance surveillance activities during the off-season, each week please send:

- ◊ **All influenza positive specimens**
- ◊ **Up to 5 SARS-CoV-2 positive specimens**

## Links:

- The WSLH sequencing dashboard is available here: <https://dataportal.slh.wisc.edu/sc2dashboard>
- A current summary of COVID-19 data for Wisconsin can be found here: <https://www.dhs.wisconsin.gov/covid-19/data.htm>
- The influenza, RSV and respiratory virus activity graphs can be viewed here: <http://www.slh.wisc.edu/wcln-surveillance/surveillance/virology-surveillance/>
- The bacterial, viral and parasitic activity graphs can be viewed here: <http://www.slh.wisc.edu/wcln-surveillance/surveillance/gastropathogen-surveillance/>

## Week Ending Sept 23, 2023\*

Resp. Pathogen PCR	# Tested	% Positive
SARS-CoV-2	13274	13.4
Rhinovirus/ Enterovirus	713	29.3
Parainfluenza	748	3.5
RSV	5643	0.7
Influenza	8229	0.7
<i>B. pertussis</i>	291	0.3
Human metapneumovirus	728	0.0
Adenovirus	22	0.0
Seasonal coronaviruses	22	0.0

## Other Surveillance Data-Wisconsin:

### Respiratory pathogens

- Rhinovirus/Enterovirus and SARS-CoV-2 activities are very high.

### Gastropathogens

- Other pathogens detected include: (0.2%), Adenovirus 40/41 (0.5%), *Plesiomonas shigelloides*, *Yersinia enterocolitica* (0.4%) and Astrovirus (0.2%).

## Week Ending Sept 23, 2023\*

GI Pathogen PCR	# Tested	% Positive
Norovirus	509	4.5
<i>Salmonella</i>	727	2.6
<i>Campylobacter</i>	709	2.4
<i>Cryptosporidium</i>	512	2.3
<i>Giardia</i>	530	1.9
STEC	709	1.4
Rotavirus	504	0.8
Sapovirus	443	0.5
<i>Cyclospora</i>	443	0.2
<i>Shigella</i> /EIEC	621	0.2
<i>E. coli</i> 0157	161	0.0

\* On a weekly basis, participating Wisconsin clinical laboratories voluntarily report to WSLH the total number of tests performed, the method used for detection, and the number of those tests with positive results.

