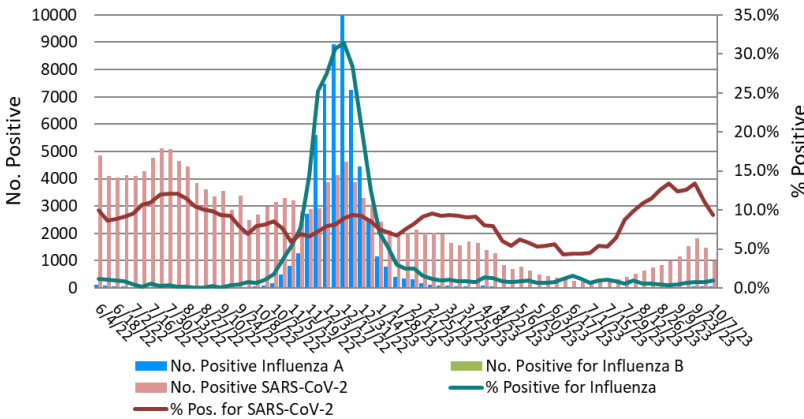


# Laboratory Surveillance Report

% Positive for Influenza and SARS-CoV-2 by PCR (Wisconsin), June 2022 to Week Ending October 7, 2023



**Influenza**

- Influenza activity is low in Wisconsin (0.9%) and nationally (1.1%).

**SARS-CoV-2**

- SARS-CoV-2 activity is **HIGH** in Wisconsin (9.3%).
- Omicron subvariant EG.5 is emerging as the dominant lineage circulating (~20-30%)

**To enhance surveillance activities during the off-season, each week please send:**

- ◇ **All influenza positive specimens**
- ◇ **Up to 5 SARS-CoV-2 positive specimens**

## Links:

- The WSLH sequencing dashboard is available here: <https://dataportal.slh.wisc.edu/sc2dashboard>
- A current summary of COVID-19 data for Wisconsin can be found here: <https://www.dhs.wisconsin.gov/covid-19/data.htm>
- The influenza, RSV and respiratory virus activity graphs can be viewed here: <http://www.slh.wisc.edu/wcln-surveillance/surveillance/virology-surveillance/>
- The bacterial, viral and parasitic activity graphs can be viewed here: <http://www.slh.wisc.edu/wcln-surveillance/surveillance/gastropathogen-surveillance/>

Week Ending Oct 7, 2023*		
Resp. Pathogen PCR	# Tested	% Positive
SARS-CoV-2	10613	9.3
Rhinovirus/Enterovirus	646	26.6
Parainfluenza	682	4.7
RSV	5381	1.3
Influenza	7505	0.9
Human metapneumovirus	685	0.1
<i>B. pertussis</i>	308	0.0
Adenovirus	20	0.0
Seasonal coronaviruses	20	0.0

## Other Surveillance Data-Wisconsin:

### Respiratory pathogens

- Rhinovirus/Enterovirus and SARS-CoV-2 activities are high.

### Gastropathogens

- Other pathogens detected include: *Plesiomonas shigelloides* (2.0%), Adenovirus 40/41 (1.0%), *Yersinia enterocolitica* (0.4%) and Astrovirus (0.2%).

Week Ending Oct 7, 2023*		
GI Pathogen PCR	# Tested	% Positive
<i>Campylobacter</i>	643	3.9
Norovirus	463	3.0
<i>Salmonella</i>	643	2.0
<i>Giardia</i>	501	1.6
STEC	643	1.6
<i>Cryptosporidium</i>	501	0.8
<i>E. coli</i> 0157	239	0.4
Rotavirus	465	0.4
Sapovirus	409	0.2
<i>Shigella</i> /EIEC	643	0.2
<i>Cyclospora</i>	409	0.0

\* On a weekly basis, participating Wisconsin clinical laboratories voluntarily report to WSLH the total number of tests performed, the method used for detection, and the number of those tests with positive results.

