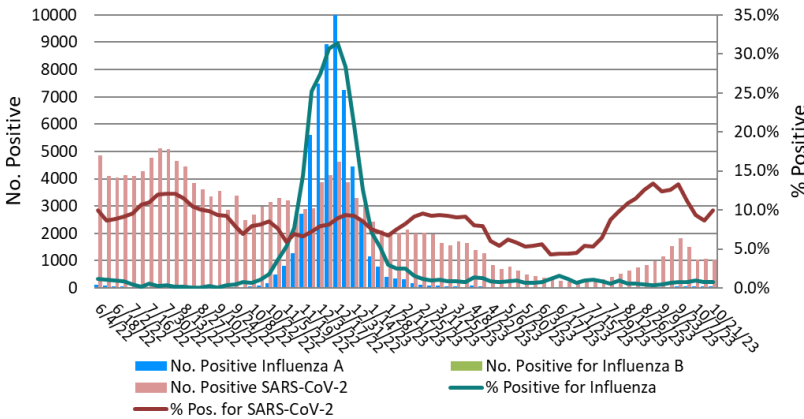


# Laboratory Surveillance Report

% Positive for Influenza and SARS-CoV-2 by PCR (Wisconsin),  
June 2022 to Week Ending October 21, 2023



## Influenza

- Influenza activity is low in Wisconsin (0.8%) and nationally (1.7%).

## SARS-CoV-2

- SARS-CoV-2 activity is **HIGH** in Wisconsin (9.9%).
- Omicron subvariant EG.5 is emerging as the dominant lineage circulating (~20-30%)

To enhance surveillance activities during the off-season, each week please send:

- ◇ **All influenza positive specimens**
- ◇ **Up to 5 SARS-CoV-2 positive specimens**

## Links:

- The WSLH sequencing dashboard is available here: <https://dataportal.slh.wisc.edu/sc2dashboard>
- A current summary of COVID-19 data for Wisconsin can be found here: <https://www.dhs.wisconsin.gov/covid-19/data.htm>
- The influenza, RSV and respiratory virus activity graphs can be viewed here: <http://www.slh.wisc.edu/wcln-surveillance/surveillance/virology-surveillance/>
- The bacterial, viral and parasitic activity graphs can be viewed here: <http://www.slh.wisc.edu/wcln-surveillance/surveillance/gastropathogen-surveillance/>

## Week Ending Oct 21, 2023\*

Resp. Pathogen PCR	# Tested	% Positive
SARS-CoV-2	10573	9.9
Rhinovirus/ Enterovirus	795	17.7
Parainfluenza	830	8.4
Seasonal coronaviruses	32	3.1
Adenovirus	32	3.1
RSV	5998	2.1
Influenza	7845	0.8
<i>B. pertussis</i>	418	0.5
Human metapneumovirus	829	0.2

## Other Surveillance Data-Wisconsin:

### Respiratory pathogens

- Rhinovirus/Enterovirus and SARS-CoV-2 activities are high.

### Gastropathogens

- Other pathogens detected include: Adenovirus 40/41 (1.7%) and *Yersinia enterocolitica* (0.4%).

## Week Ending Oct 21, 2023\*

GI Pathogen PCR	# Tested	% Positive
Norovirus	481	3.1
<i>Campylobacter</i>	681	2.6
<i>Giardia</i>	508	2.4
STEC	681	1.6
<i>Cryptosporidium</i>	518	1.4
<i>E. coli</i> 0157	159	1.3
<i>Salmonella</i>	681	1.2
Rotavirus	481	1.0
Sapovirus	423	0.7
<i>Shigella</i> /EIEC	634	0.0
<i>Cyclospora</i>	423	0.0

\* On a weekly basis, participating Wisconsin clinical laboratories voluntarily report to WSLH the total number of tests performed, the method used for detection, and the number of those tests with positive results.

