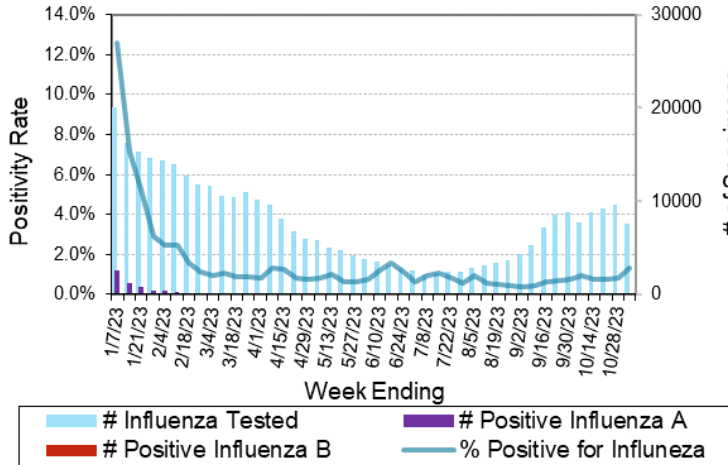
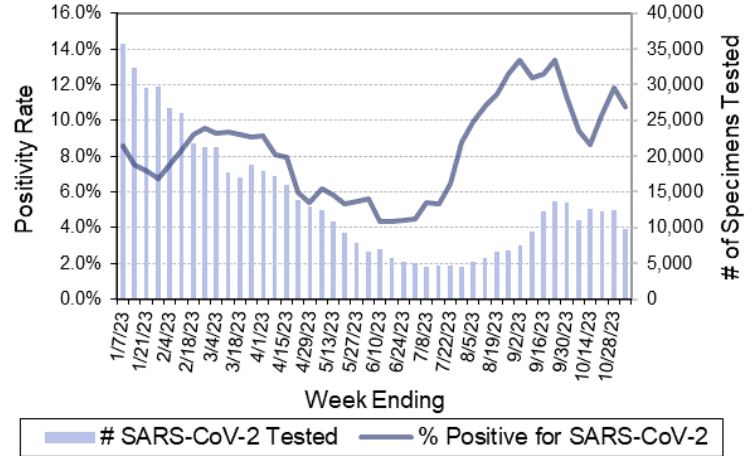


Laboratory Surveillance Report

Number Tested and Positivity Rate for Influenza by PCR at Wisconsin Laboratories



Number Tested and Positivity Rate for SARS-CoV-2 by PCR at Wisconsin Laboratories



Respiratory Snapshot:

- Influenza activity is **increasing** in Wisconsin (1.3%) and nationally (1.9%).
 - **H1pdm09** is the dominant Influenza A subtype circulating (85%).
- SARS-CoV-2 activity is **high** in Wisconsin (10.7%).
- RSV activity is **increasing** in Wisconsin (4.5%)


Enteric Snapshot:

- Norovirus (4.2%) and campylobacter (4.2%) activities are moderate.

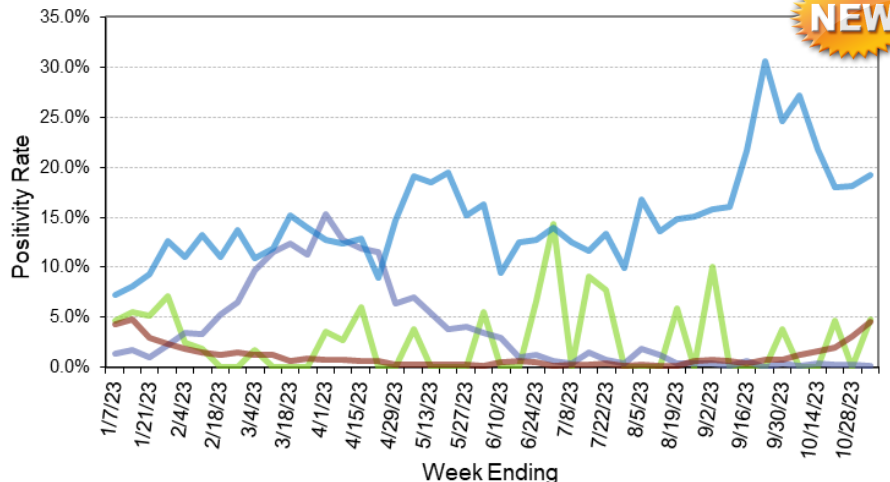
Other:

- Group A Streptococcus activity in Wisconsin is decreasing (14.2%).

To enhance surveillance activities, each week please send:

- **PCR/Molecular Testing sites:**
 - ◇ **One Influenza-related hospitalization** 
 - ◇ Influenza A specimens:
 - That fail to subtype (Ct <35)
 - With swine or avian exposure
 - With international travel history
- **All Testing Sites:**
 - ◇ **Up to 5** SARS-CoV-2 positive specimens

Positivity Rate of Adenovirus, hMPV and Rhino/Enterovirus and RSV by PCR at Wisconsin Laboratories



Next Page



— % Positive for Adenovirus — % Positive for hMPV
— % Positive for Rhino/Enterovirus — % Positive for RSV

Laboratory Surveillance Report

Week Ending Oct 28, 2023*

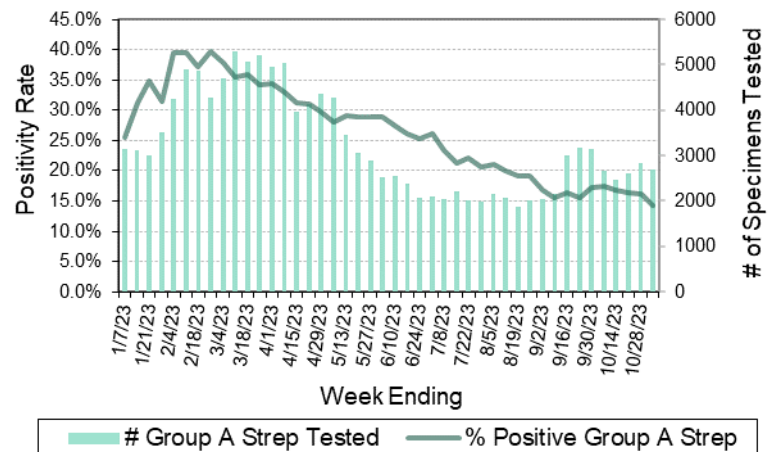
GI Pathogen - PCR	# Tested	% Positive
Norovirus	358	4.2
<i>Campylobacter</i>	506	4.2
Sapovirus	296	3.0
<i>Salmonella</i>	506	1.6
STEC	506	0.8
Adenovirus 40/41	296	0.7
<i>Cryptosporidium</i>	343	0.6
Rotavirus	355	0.6
<i>Yersinia enterocolitica</i>	390	0.5
<i>Giardia</i>	343	0.3
<i>Shigella</i>	450	0.2
<i>E. coli</i> 0157	110	0.0
<i>Cyclospora</i>	296	0.0
Astrovirus	296	0.0
<i>Plesiomonas shigelloides</i>	331	0.0
<i>Entamoeba histolytica</i>	343	0.0
<i>Aeromonas</i>	48	0.0
<i>Vibrio</i>	390	0.0

Week Ending Oct 28, 2023*

Resp Pathogen - PCR	# Tested	% Positive
Rhinovirus/Enterovirus	571	19.3
SARS-CoV-2	9787	10.7
Parainfluenza	630	8.4
Adenovirus	21	4.8
RSV	5551	4.5
Influenza	7584	1.3
<i>B. pertussis</i>	359	0.3
Human metapneumovirus	549	0.2
Seasonal coronaviruses	21	0.0

NEW

Number Tested and Positivity Rate for **Group A Streptococcus** by PCR at Wisconsin Laboratories



* On a weekly basis, participating Wisconsin clinical laboratories voluntarily report to WSLH the total number of tests performed, the method used for detection, and the number of those tests with positive results.

Additional Information

- The WSLH sequencing dashboard is available here: <https://dataportal.slh.wisc.edu/sc2dashboard>
- A current summary of COVID-19 data for Wisconsin can be found here: <https://www.dhs.wisconsin.gov/covid-19/data.htm>
- The influenza, RSV and respiratory virus activity graphs can be viewed here: <http://www.slh.wisc.edu/wcln-surveillance/surveillance/virology-surveillance/>
- The bacterial, viral and parasitic activity graphs can be viewed here: <http://www.slh.wisc.edu/wcln-surveillance/surveillance/gastropathogen-surveillance/>