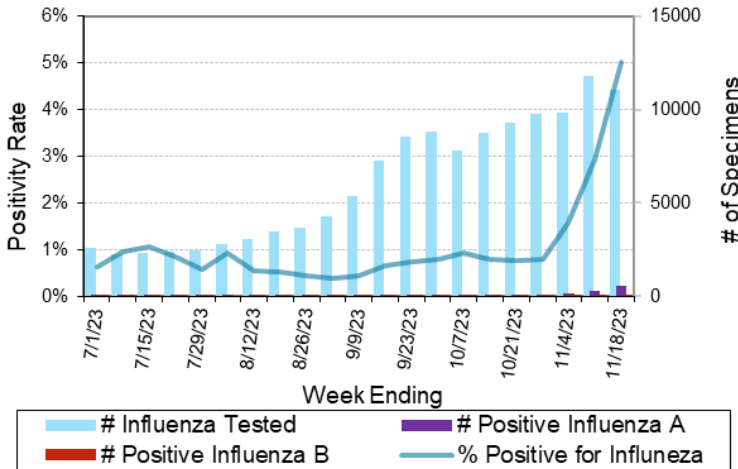
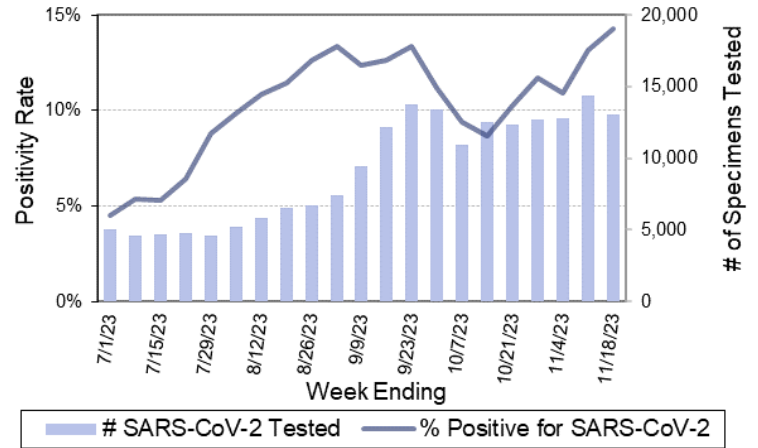


# Laboratory Surveillance Report

Number Tested and Positivity Rate for Influenza by PCR at Wisconsin Laboratories



Number Tested and Positivity Rate for SARS-CoV-2 by PCR at Wisconsin Laboratories




## Respiratory Snapshot:

- Influenza activity is **increasing** in Wisconsin (5.0%) and nationally (4.9%).
  - H1pdm09** is the dominant Influenza A subtype circulating (80%).
- Rhinovirus/Enterovirus (17.9%) and SARS-CoV-2 (14.3%) activities are **high** in Wisconsin
- RSV activity is **increasing** in Wisconsin (7.4%)

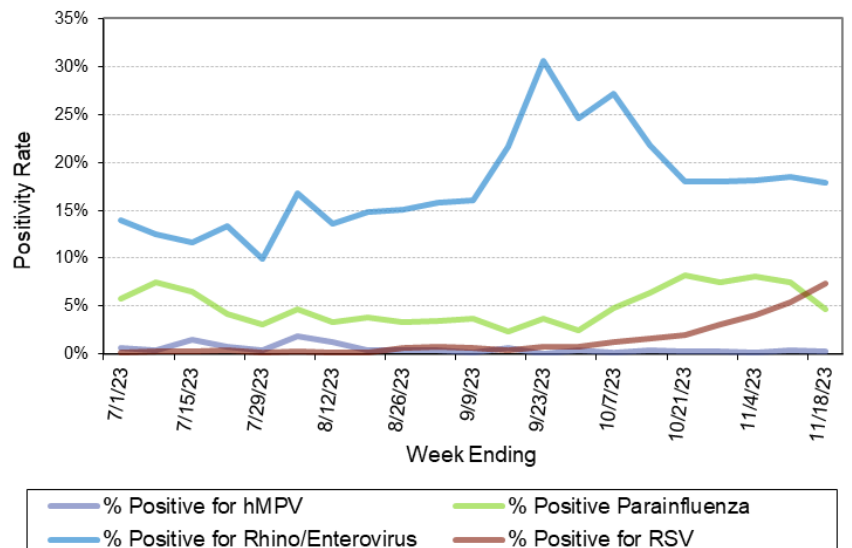
## Enteric Snapshot:

- Norovirus activity in Wisconsin is moderate (5.8%)

## To enhance surveillance activities, each week please send:

- PCR/Molecular Testing sites:**
  - ◇ **One Influenza-related hospitalization** 
  - ◇ Influenza A specimens:
    - That fail to subtype (Ct <35)
    - With swine or avian exposure
    - With international travel history
- All Testing Sites:**
  - ◇ **Up to 5** SARS-CoV-2 positive specimens

Positivity Rate of hMPV, Parainfluenza Rhino/Enterovirus and RSV by PCR at Wisconsin Laboratories



Next Page



# Laboratory Surveillance Report

## Week Ending Nov 18, 2023\*

GI Pathogen - PCR	# Tested	% Positive
Norovirus	448	5.8%
<i>Campylobacter</i>	618	3.0%
Adenovirus 40/41	402	1.7%
STEC	532	1.5%
Sapovirus	402	1.2%
<i>Giardia</i>	484	1.2%
<i>Salmonella</i>	610	0.8%
<i>Cryptosporidium</i>	484	0.6%
<i>E. coli</i> 0157	159	0.6%
<i>Shigella</i>	610	0.5%
Astrovirus	402	0.5%
Rotavirus	448	0.2%
<i>Plesiomonas shigelloides</i>	436	0.2%
<i>Yersinia enterocolitica</i>	482	0.0%
<i>Cyclospora</i>	402	0.0%
<i>Entamoeba histolytica</i>	484	0.0%
<i>Aeromonas</i>	98	0.0%
<i>Vibrio</i>	482	0.0%

## Week Ending Nov 18, 2023\*

Resp Pathogen - PCR	# Tested	% Positive
Rhinovirus/Enterovirus	877	17.9%
SARS-CoV-2	13025	14.3%
RSV	8387	7.4%↑
Influenza	11039	5.0%↑
Parainfluenza	702	4.7%
<i>Bordetella pertussis</i>	520	0.8%
Human metapneumovirus	730	0.3%
Adenovirus	15	0.0%
Seasonal coronaviruses	15	0.0%

\* On a weekly basis, participating Wisconsin clinical laboratories voluntarily report to WSLH the total number of tests performed, the method used for detection, and the number of those tests with positive results.

## Additional Information

- Additional information on respiratory pathogens can be found on the DHS website:  
<https://www.dhs.wisconsin.gov/disease/respiratory.htm>
- The WSLH SARS-CoV-2 genomic dashboard is available here:  
<https://dataportal.slh.wisc.edu/sc2dashboard>
- The influenza, RSV and respiratory virus activity graphs can be viewed here:  
<http://www.slh.wisc.edu/wcln-surveillance/surveillance/virology-surveillance/>
- The bacterial, viral and parasitic activity graphs can be viewed here:  
<http://www.slh.wisc.edu/wcln-surveillance/surveillance/gastropathogen-surveillance/>

To subscribe to this report, email [WCLN@slh.wisc.edu](mailto:WCLN@slh.wisc.edu)