

# Laboratory Surveillance Report

\*\* For a selection of pathogens, participating Wisconsin clinical laboratories voluntarily report to WSLH on a weekly basis the total number of tests performed, and the number of those tests with positive results.

## To enhance surveillance activities, each week please send:

- **PCR/Molecular Testing sites:**
  - ◊ One Influenza-related hospitalization
  - ◊ Influenza A specimens:
    - That fail to subtype (Ct <35)
    - With swine or avian exposure
    - With international travel history
- **All Testing Sites:**
  - ◊ Up to 5 SARS-CoV-2 positive specimens

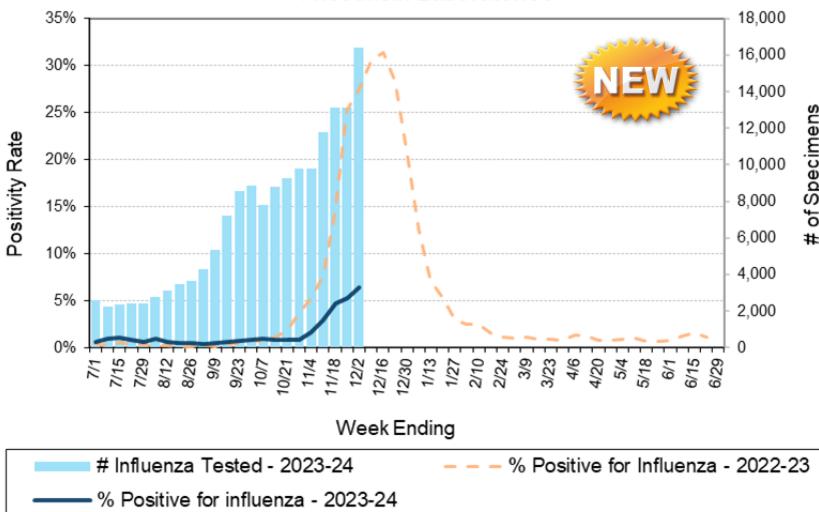
## Respiratory Snapshot:

- Influenza activity is **increasing** in Wisconsin (6.4%) and nationally (6.8%).
  - **Influenza A** is the dominant strain circulating (80%)
  - **H1pdm09** is the dominant Influenza A subtype circulating (75%).
- Rhinovirus/Enterovirus (15.9%) and SARS-CoV-2 (15.9%) activities are **high** in Wisconsin
- RSV activity is **increasing** in Wisconsin (9.6%)

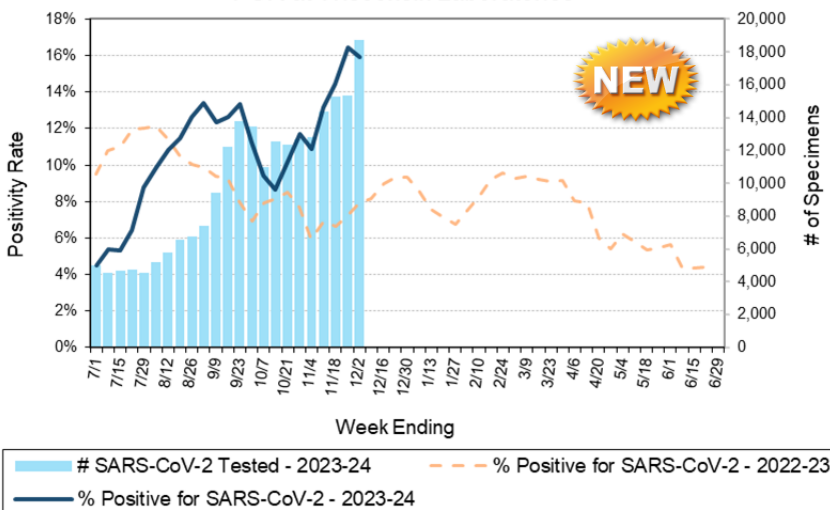
## Enteric Snapshot:

- Norovirus activity in Wisconsin is moderate (3.9%)
- **Other:**
  - Group A Streptococcus activity in Wisconsin is **high** (13.5%)

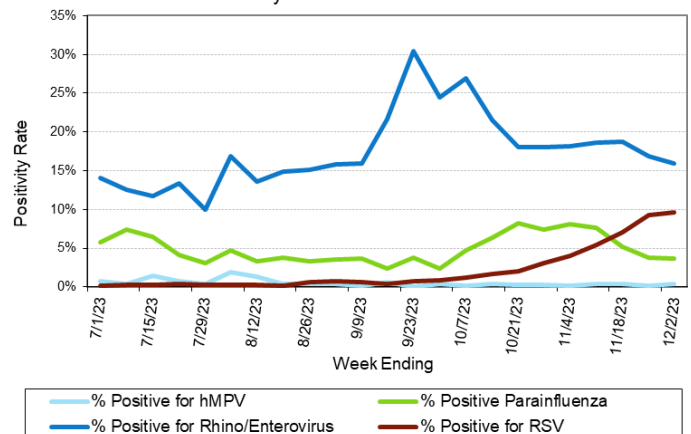
Number Tested and Positivity Rate for **Influenza** by PCR at Wisconsin Laboratories



Number Tested and Positivity Rate for **SARS-CoV-2** by PCR at Wisconsin Laboratories



Positivity Rate of **hMPV, Parainfluenza, Rhino/Enterovirus and RSV** by PCR at Wisconsin Laboratories



# Laboratory Surveillance Report

## Enteric Pathogens

Week Ending 12/2/23

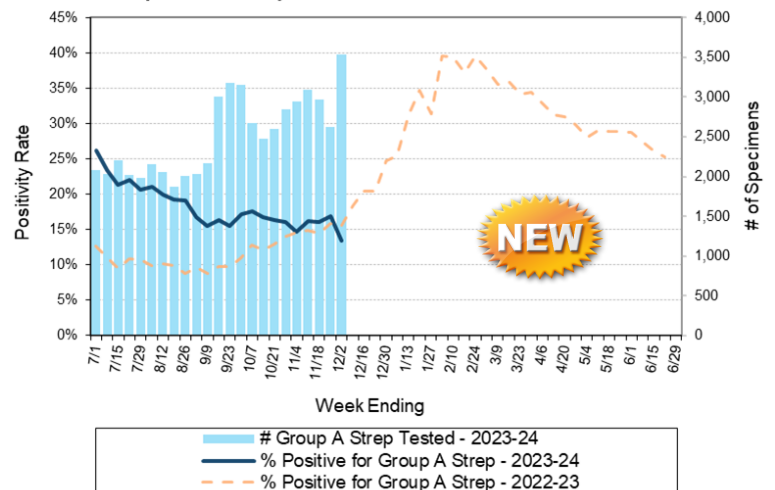
	# Tested	% Positive
Norovirus	464	3.9%
<i>Campylobacter</i>	639	3.0%
Sapovirus	414	2.4%
Adenovirus 40/41	414	2.2%
STEC	623	1.6%
<i>Salmonella</i>	623	1.4%
<i>Giardia</i>	481	0.6%
<i>E. coli</i> 0157	178	0.6%
<i>Shigella</i> /EIEC	623	0.6%
Rotavirus	464	0.6%
Astrovirus	414	0.5%
<i>Plesiomonas shigelloides</i>	449	0.4%
<i>Yersinia enterocolitica</i>	499	0.2%
<i>Cyclospora</i>	414	0.2%
<i>Cryptosporidium</i>	481	0.0%
<i>Entamoeba histolytica</i>	481	0.0%
<i>Aeromonas</i>	88	0.0%
<i>Vibrio</i>	499	0.0%

## Respiratory Pathogens

Week Ending 12/2/2

	# Tested	% Positive
Rhinovirus/Enterovirus	1402	15.9%
SARS-CoV-2	18730	15.9%
RSV	12530	9.6% ↑
Influenza	16400	6.4% ↑
Seasonal coronaviruses	40	5.0%
Parainfluenza	1008	3.7%
Adenovirus	40	2.5%
Human metapneumovirus	986	0.4%
<i>Bordetella pertussis</i>	478	0.2%

Number Tested and Positivity Rate for **Group A Streptococcus** by PCR at Wisconsin Laboratories



## Additional Information

- Additional information on respiratory pathogens can be found on the DHS website:

<https://www.dhs.wisconsin.gov/disease/respiratory.htm>

- The WSLH SARS-CoV-2 genomic dashboard is available here:

<https://dataportal.slh.wisc.edu/sc2dashboard>

- The influenza, RSV and respiratory virus activity graphs can be viewed here:

<http://www.slh.wisc.edu/wcln-surveillance/surveillance/virology-surveillance/>

- The bacterial, viral and parasitic activity graphs can be viewed here:

<http://www.slh.wisc.edu/wcln-surveillance/surveillance/gastropathogen-surveillance/>

To subscribe to this report, email [WCLN@slh.wisc.edu](mailto:WCLN@slh.wisc.edu)