

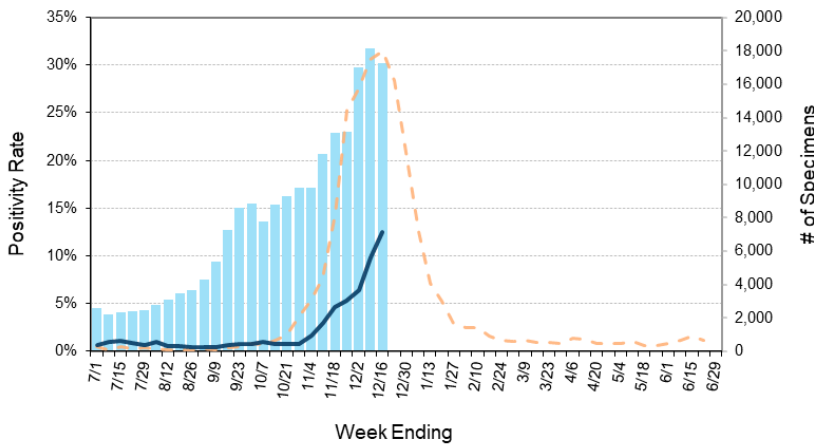
Laboratory Surveillance Report

** For a selection of pathogens, participating Wisconsin clinical laboratories voluntarily report to WSLH on a weekly basis the total number of tests performed, and the number of those tests with positive results.

To enhance surveillance activities, each week please send:

- **PCR/Molecular Testing sites:**
 - ◊ One Influenza-related hospitalization
 - ◊ Influenza A specimens:
 - That fail to subtype (Ct <35)
 - With swine or avian exposure
 - With international travel history
- **All Testing Sites:**
 - ◊ Up to 5 SARS-CoV-2 positive specimens

Number Tested and Positivity Rate for **Influenza** by PCR at Wisconsin Laboratories



Respiratory Snapshot:

- Influenza activity is **increasing** in Wisconsin (12.5%) and nationally (10.2%).
 - **Influenza A** is the dominant strain circulating (82%)
 - **H1pdm09** is the dominant Influenza A subtype circulating (75%).
- RSV activity is **increasing** in Wisconsin (13.8%)
- SARS-CoV-2 (16.0%) and Rhinovirus/Enterovirus (13.1%) activities are **high** in Wisconsin

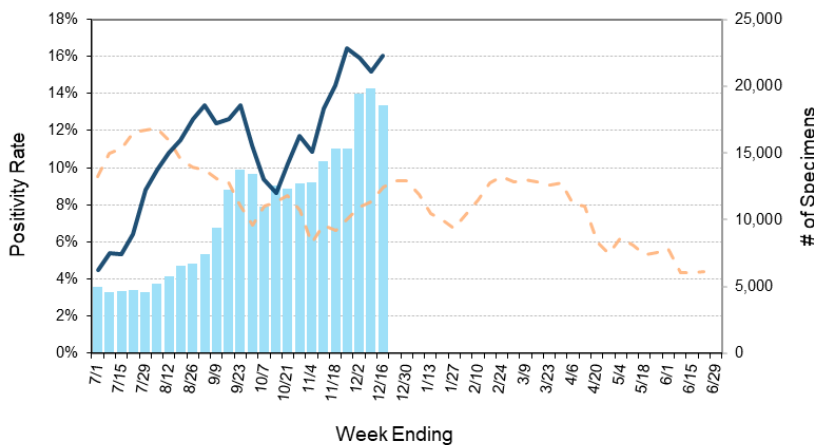
Enteric Snapshot:

- Norovirus activity is **increasing** (7.5%) in Wisconsin.

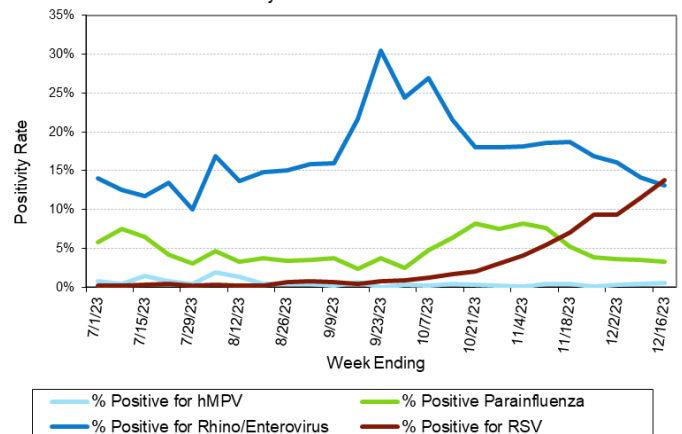
Other:

- Group A Streptococcus activity in Wisconsin is **high** (16.3%)

Number Tested and Positivity Rate for **SARS-CoV-2** by PCR at Wisconsin Laboratories



Positivity Rate of **hMPV, Parainfluenza, Rhino/Enterovirus and RSV** by PCR at Wisconsin Laboratories



■ # SARS-CoV-2 Tested - 2023-24 - - - % Positive for SARS-CoV-2 - 2022-23
— % Positive for SARS-CoV-2 - 2023-24

Laboratory Surveillance Report

Enteric Pathogens

Week Ending 12/16/23

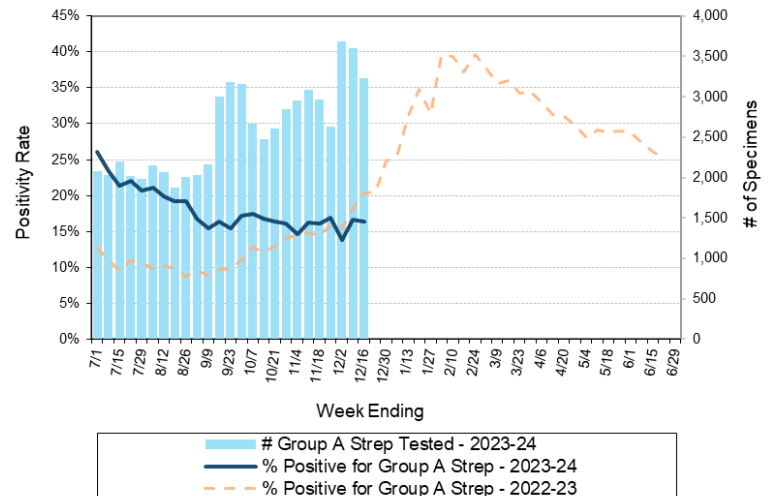
	# Tested	% Positive
Norovirus	411	7.5% ↑
<i>Campylobacter</i>	600	4.3%
Sapovirus	338	2.4%
<i>Salmonella</i>	600	1.2%
Rotavirus	405	1.0%
<i>Cryptosporidium</i>	419	1.0%
STEC	600	0.8%
<i>E. coli</i> 0157	140	0.7%
<i>Giardia</i>	419	0.5%
<i>Yersinia enterocolitica</i>	463	0.5%
<i>Shigella/EIEC</i>	546	0.4%
Adenovirus 40/41	338	0.3%
Astrovirus	338	0.3%
<i>Plesiomonas shigelloides</i>	376	0.3%
<i>Cyclospora</i>	340	0.0%
<i>Entamoeba histolytica</i>	417	0.0%
<i>Aeromonas</i>	77	0.0%
<i>Vibrio</i>	441	0.0%

Respiratory Pathogens

Week Ending 12/16/23

	# Tested	% Positive
SARS-CoV-2	18590	16.0%
RSV	14134	13.8% ↑
Rhinovirus/Enterovirus	1361	13.1%
Influenza	17289	12.5% ↑
Parainfluenza	892	3.3%
Adenovirus	916	2.6%
Human metapneumovirus	914	0.5%
Seasonal coronaviruses	531	0.4%
<i>Bordetella pertussis</i>	672	0.1%

Number Tested and Positivity Rate for **Group A Streptococcus** by PCR at Wisconsin Laboratories



Additional Information

- Additional information on respiratory pathogens can be found on the DHS website:

<https://www.dhs.wisconsin.gov/disease/respiratory.htm>

- The WSLH SARS-CoV-2 genomic dashboard is available here:

<https://dataportal.slh.wisc.edu/sc2dashboard>

- The influenza, RSV and respiratory virus activity graphs can be viewed here:

<http://www.slh.wisc.edu/wcln-surveillance/surveillance/virology-surveillance/>

- The bacterial, viral and parasitic activity graphs can be viewed here:

<http://www.slh.wisc.edu/wcln-surveillance/surveillance/gastropathogen-surveillance/>

To subscribe to this report, email WCLN@slh.wisc.edu