

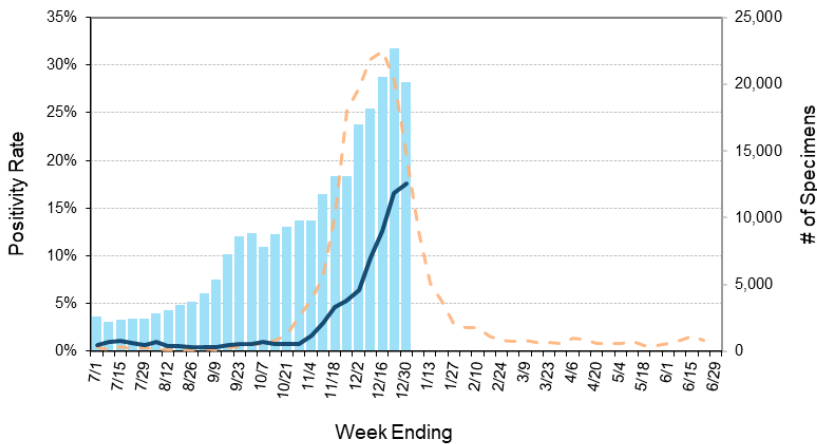
Laboratory Surveillance Report

** For a selection of pathogens, participating Wisconsin clinical laboratories voluntarily report to WSLH on a weekly basis the total number of tests performed, and the number of those tests with positive results.

To enhance surveillance activities, each week please send:

- **PCR/Molecular Testing sites:**
 - ◊ **One Influenza-related hospitalization**
 - ◊ Influenza A specimens:
 - That fail to subtype (Ct <35)
 - With swine or avian exposure
 - With international travel history
- **All Testing Sites:**
 - ◊ **Up to 5** SARS-CoV-2 positive specimens

Number Tested and Positivity Rate for **Influenza** by PCR at Wisconsin Laboratories



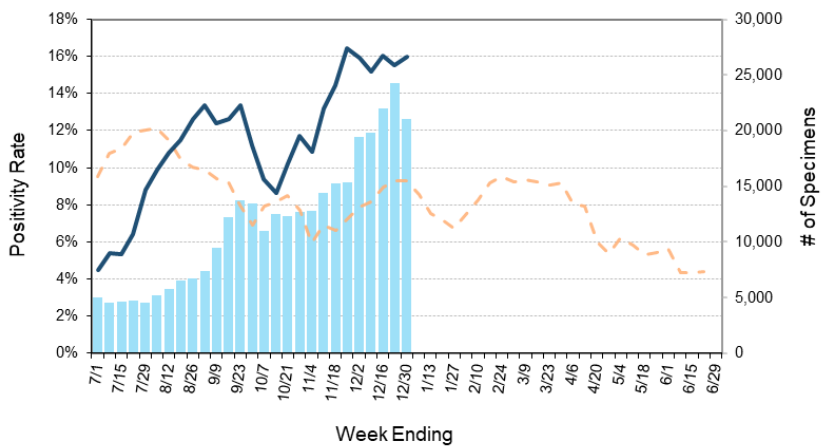
Respiratory Snapshot:

- Influenza activity is **increasing** in Wisconsin (17.5%) and nationally (17.5%).
 - **Influenza A** is the dominant strain circulating (82%)
 - **H1pdm09** is the dominant Influenza A subtype circulating (87%).
- RSV (13.2%) and SARS-CoV-2 (16.0%) activities are **high** in Wisconsin

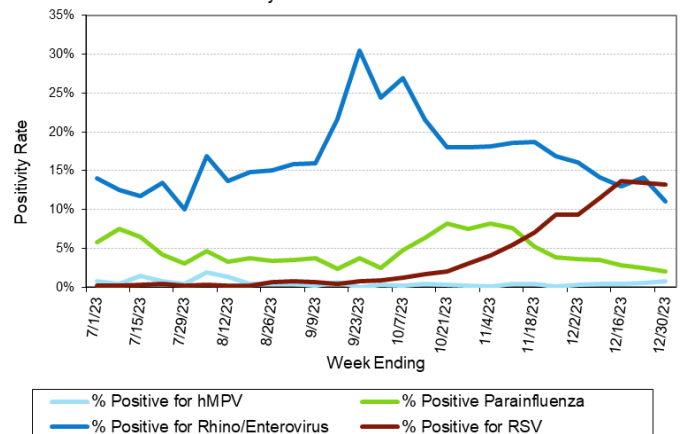
Enteric Snapshot:

- Norovirus activity is **increasing** (16.6%) in Wisconsin.
- **Other:**
 - Group A Streptococcus activity in Wisconsin is **high** (18.1%)

Number Tested and Positivity Rate for **SARS-CoV-2** by PCR at Wisconsin Laboratories



Positivity Rate of **hMPV, Parainfluenza, Rhino/Enterovirus** and **RSV** by PCR at Wisconsin Laboratories



Laboratory Surveillance Report

Enteric Pathogens

Week Ending 12/30/23

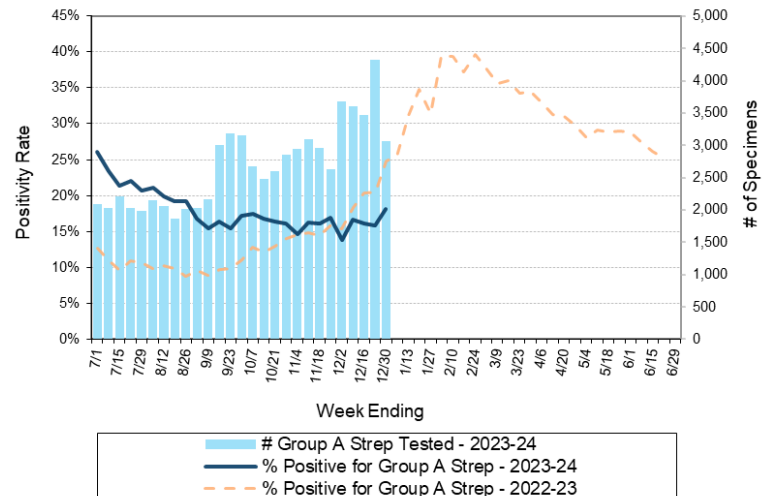
	# Tested	% Positive
Norovirus	457	16.6% ↑
Sapovirus	378	7.9% ↑
Rotavirus	448	2.0%
<i>Campylobacter</i>	621	1.6%
<i>Salmonella</i>	621	1.3%
<i>Yersinia enterocolitica</i>	485	0.8%
STEC	612	0.7%
<i>Shigella/EIEC</i>	570	0.5%
<i>Cryptosporidium</i>	461	0.4%
<i>Giardia</i>	461	0.4%
Adenovirus 40/41	378	0.3%
Astrovirus	378	0.3%
<i>Vibrio</i>	475	0.2%
<i>E. coli</i> 0157	165	0.0%
<i>Plesiomonas shigelloides</i>	415	0.0%
<i>Cyclospora</i>	388	0.0%
<i>Entamoeba histolytica</i>	475	0.0%
<i>Aeromonas</i>	57	0.0%

Respiratory Pathogens

Week Ending 12/30/23

	# Tested	% Positive
Influenza	20119	17.5% ↑
SARS-CoV-2	21064	16.0%
RSV	16813	13.2%
Rhinovirus/Enterovirus	2142	11.0%
Adenovirus	1271	2.7%
Seasonal coronaviruses	1139	2.6%
Parainfluenza	1276	2.0%
Human metapneumovirus	1289	0.8%
<i>Bordetella pertussis</i>	1000	0.0%

Number Tested and Positivity Rate for **Group A Streptococcus** by PCR at Wisconsin Laboratories



Additional Information

- Additional information on respiratory pathogens can be found on the DHS website:

<https://www.dhs.wisconsin.gov/disease/respiratory.htm>

- The WSLH SARS-CoV-2 genomic dashboard is available here:

<https://dataportal.slh.wisc.edu/sc2dashboard>

- The influenza, RSV and respiratory virus activity graphs can be viewed here:

<http://www.slh.wisc.edu/wcln-surveillance/surveillance/virology-surveillance/>

- The bacterial, viral and parasitic activity graphs can be viewed here:

<http://www.slh.wisc.edu/wcln-surveillance/surveillance/gastropathogen-surveillance/>

To subscribe to this report, email WCLN@slh.wisc.edu