

Laboratory Surveillance Report

**** For a selection of pathogens, participating Wisconsin clinical laboratories voluntarily report to WSLH on a weekly basis the total number of tests performed, and the number of those tests with positive results.**

To enhance surveillance activities, each week please send:

- **PCR/Molecular Testing sites:**
 - ◊ One Influenza-related hospitalization
 - ◊ Influenza A specimens:
 - That fail to subtype (Ct <35)
 - With swine or avian exposure
 - With international travel history
- **All Testing Sites:**
 - ◊ Up to 5 SARS-CoV-2 positive specimens

Respiratory Snapshot:

- Influenza activity is **high** in Wisconsin (15.2%) and nationally (13.7%).
 - **Influenza A** is the dominant strain circulating (81%)
 - **H1pdm09** is the dominant Influenza A subtype circulating (73%).
- RSV (12.6%) and SARS-CoV-2 (12.8%) activities are **high** in Wisconsin

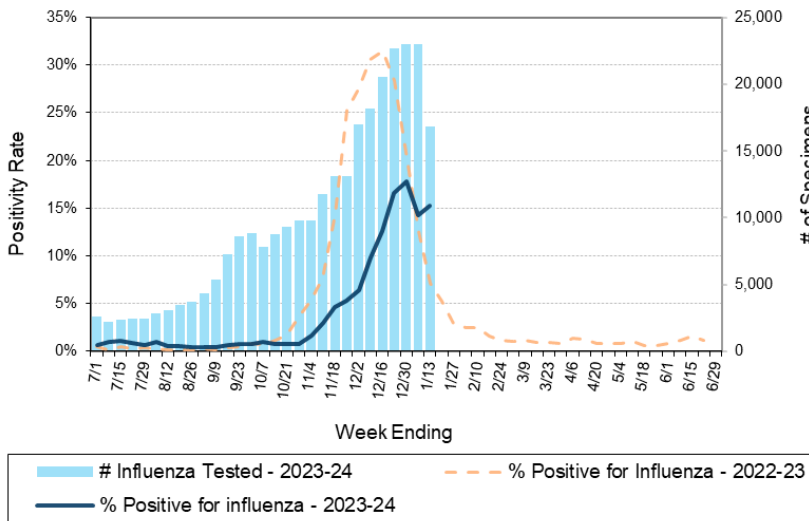
Enteric Snapshot:

- Norovirus activity is **decreasing** (9.3%) in Wisconsin.

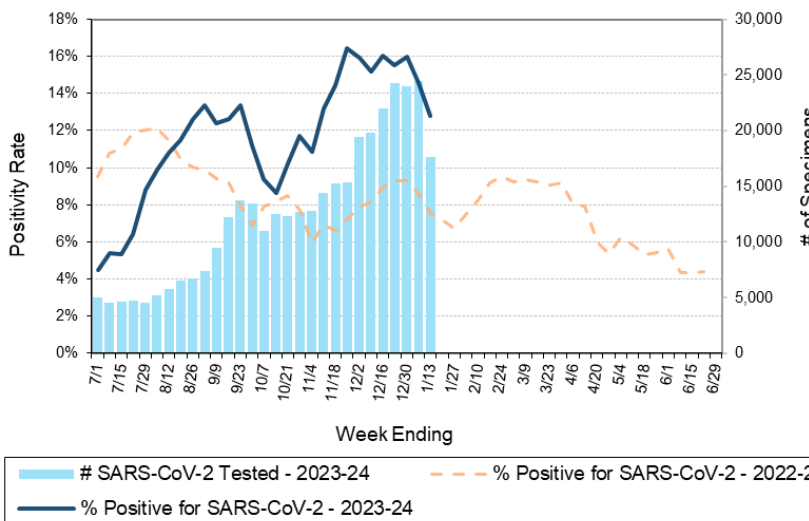
Other:

- Group A Streptococcus activity in Wisconsin is **high** (16.6%)

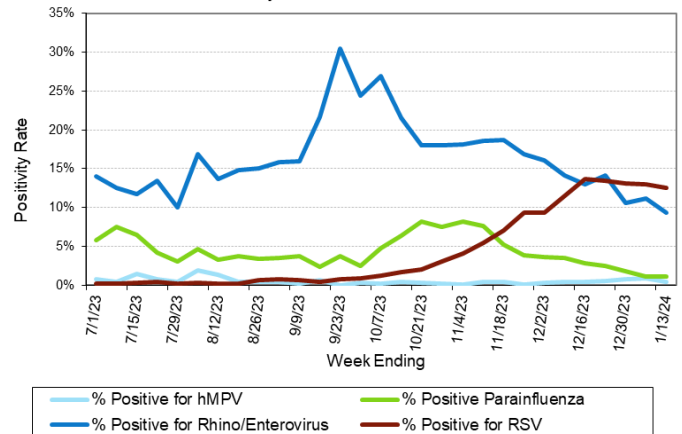
Number Tested and Positivity Rate for **Influenza** by PCR at Wisconsin Laboratories



Number Tested and Positivity Rate for **SARS-CoV-2** by PCR at Wisconsin Laboratories



Positivity Rate of **hMPV, Parainfluenza, Rhino/Enterovirus and RSV** by PCR at Wisconsin Laboratories



Laboratory Surveillance Report

Enteric Pathogens

Week Ending 1/13/24

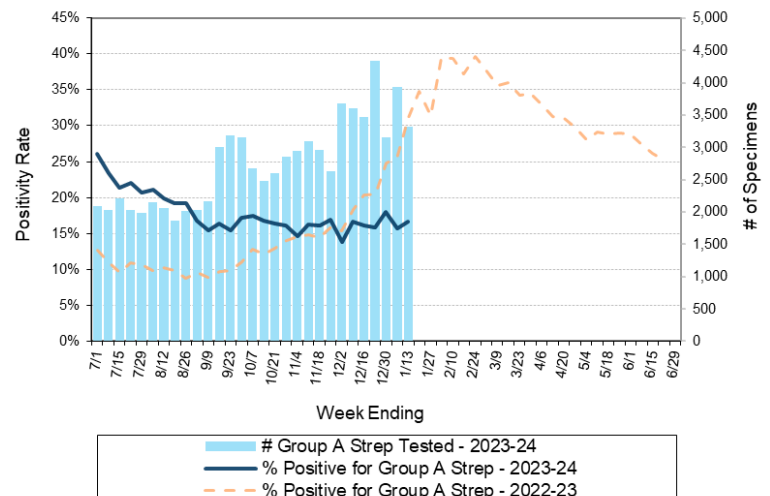
	# Tested	% Positive
Norovirus	408	9.3% ↓
Sapovirus	331	5.1%
<i>Campylobacter</i>	539	2.2%
<i>Salmonella</i>	539	1.5%
Astrovirus	340	1.5%
<i>Giardia</i>	378	1.3%
Rotavirus	378	1.1%
<i>Cryptosporidium</i>	378	1.1%
<i>Yersinia enterocolitica</i>	412	1.0%
Adenovirus 40/41	329	0.6%
STEC	539	0.2%
<i>Shigella/EIEC</i>	493	0.2%
<i>Vibrio</i>	403	0.0%
<i>E. coli</i> 0157	161	0.0%
<i>Plesiomonas shigelloides</i>	343	0.0%
<i>Cyclospora</i>	329	0.0%
<i>Entamoeba histolytica</i>	369	0.0%
<i>Aeromonas</i>	80	0.0%

Respiratory Pathogens

Week Ending 1/13/24

	# Tested	% Positive
Influenza	16815	15.2%
SARS-CoV-2	17656	12.8%
RSV	12977	12.6%
Rhinovirus/Enterovirus	1818	9.3% ↓
Seasonal coronaviruses	1062	4.4%
Adenovirus	1156	3.8%
Parainfluenza	1181	1.1%
Human metapneumovirus	1182	0.4%
<i>Bordetella pertussis</i>	714	0.0%

Number Tested and Positivity Rate for **Group A Streptococcus** by PCR at Wisconsin Laboratories



Additional Information

- Additional information on respiratory pathogens can be found on the DHS website:

<https://www.dhs.wisconsin.gov/disease/respiratory.htm>

- The WSLH SARS-CoV-2 genomic dashboard is available here:

<https://dataportal.slh.wisc.edu/sc2dashboard>

- The influenza, RSV and respiratory virus activity graphs can be viewed here:

<http://www.slh.wisc.edu/wcln-surveillance/surveillance/virology-surveillance/>

- The bacterial, viral and parasitic activity graphs can be viewed here:

<http://www.slh.wisc.edu/wcln-surveillance/surveillance/gastropathogen-surveillance/>

To subscribe to this report, email WCLN@slh.wisc.edu