

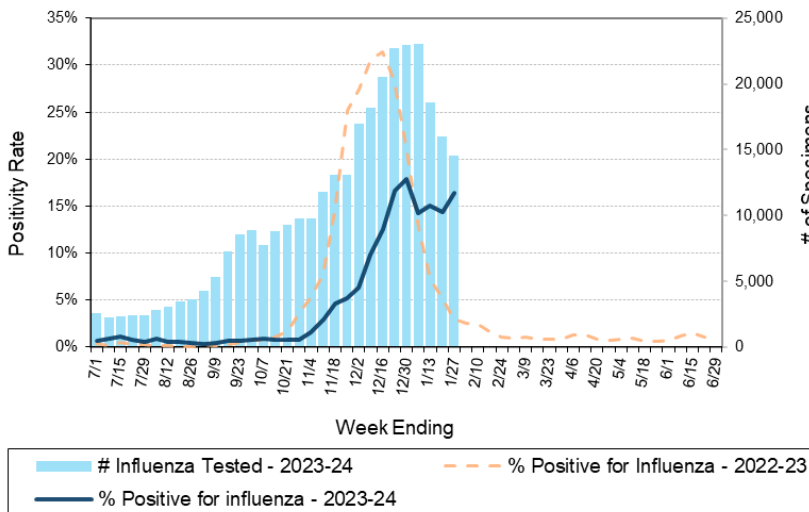
Laboratory Surveillance Report

**** For a selection of pathogens, participating Wisconsin clinical laboratories voluntarily report to WSLH on a weekly basis the total number of tests performed, and the number of those tests with positive results.**

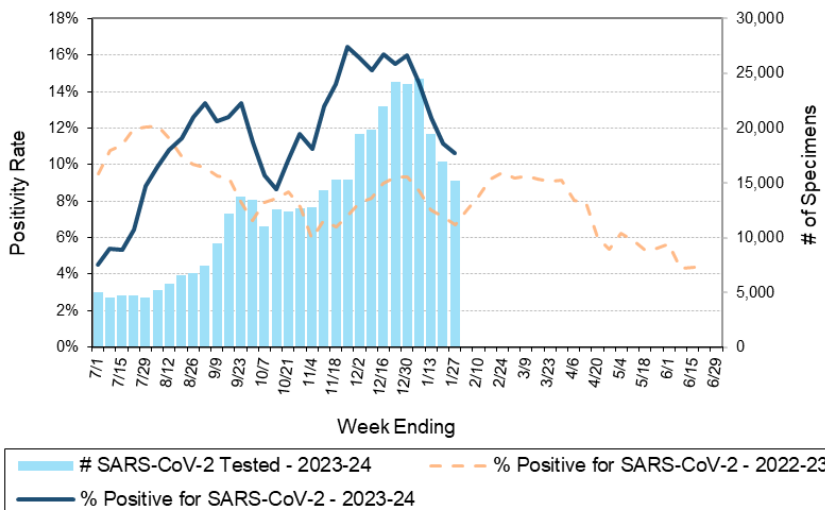
- To enhance surveillance activities, each week please send:**
- **PCR/Molecular Testing sites:**
 - ◊ **One Influenza-related hospitalization**
 - ◊ Influenza A specimens:
 - That fail to subtype (Ct <35)
 - With swine or avian exposure
 - With international travel history
 - **All Testing Sites:**
 - ◊ **Up to 5** SARS-CoV-2 positive specimens

- Respiratory Snapshot:**
- Influenza activity is **high** in Wisconsin (16.4%) and nationally (16.2%).
 - **Influenza A** is the dominant strain circulating (73%)
 - **H1pdm09** is the dominant Influenza A subtype circulating (60%).
 - RSV (8.7%) and SARS-CoV-2 (10.7%) activities are **decreasing** in Wisconsin
- Enteric Snapshot:**
- Norovirus activity is **high** (9.4%) in Wisconsin.
- Other:**
- Group A Streptococcus activity in Wisconsin is **high** (19.4%)

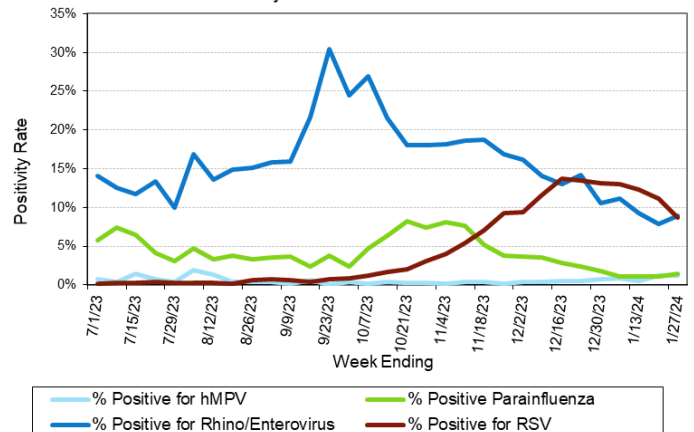
Number Tested and Positivity Rate for **Influenza** by PCR at Wisconsin Laboratories



Number Tested and Positivity Rate for **SARS-CoV-2** by PCR at Wisconsin Laboratories



Positivity Rate of **hMPV, Parainfluenza, Rhino/Enterovirus and RSV** by PCR at Wisconsin Laboratories



Laboratory Surveillance Report

Enteric Pathogens

Week Ending 1/27/24

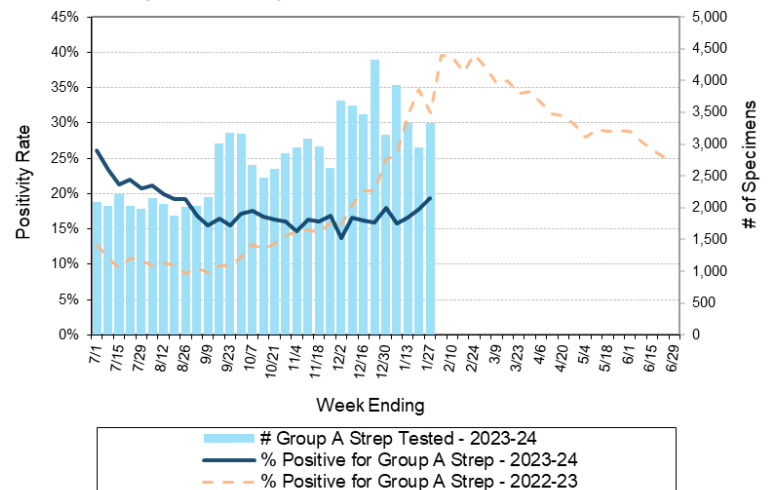
	# Tested	% Positive
Norovirus	381	9.4%
Sapovirus	268	5.2%
<i>Campylobacter</i>	578	2.8%
Astrovirus	268	1.9%
<i>Salmonella</i>	578	1.2%
<i>Giardia</i>	361	1.1%
Adenovirus 40/41	268	1.1%
Rotavirus	371	0.8%
<i>Vibrio</i>	406	0.7%
<i>Cryptosporidium</i>	361	0.6%
<i>Yersinia enterocolitica</i>	419	0.5%
STEC	578	0.3%
<i>Plesiomonas shigelloides</i>	316	0.3%
<i>Shigella/EIEC</i>	508	0.0%
<i>E. coli</i> 0157	144	0.0%
<i>Cyclospora</i>	281	0.0%
<i>Entamoeba histolytica</i>	348	0.0%
<i>Aeromonas</i>	71	0.0%

Respiratory Pathogens

Week Ending 1/27/24

	# Tested	% Positive
Influenza	14564	16.4%
SARS-CoV-2	15229	10.7% ↓
Rhinovirus/Enterovirus	1447	8.9%
RSV	10826	8.7% ↓
Seasonal coronaviruses	540	4.6%
Adenovirus	893	2.2%
Parainfluenza	916	1.4%
Human metapneumovirus	915	1.2%
<i>Bordetella pertussis</i>	501	0.4%

Number Tested and Positivity Rate for **Group A Streptococcus** by PCR at Wisconsin Laboratories



Additional Information

- Additional information on respiratory pathogens can be found on the DHS website:

<https://www.dhs.wisconsin.gov/disease/respiratory.htm>

- The WSLH SARS-CoV-2 genomic dashboard is available here:

<https://dataportal.slh.wisc.edu/sc2dashboard>

- The influenza, RSV and respiratory virus activity graphs can be viewed here:

<http://www.slh.wisc.edu/wcln-surveillance/surveillance/virology-surveillance/>

- The bacterial, viral and parasitic activity graphs can be viewed here:

<http://www.slh.wisc.edu/wcln-surveillance/surveillance/gastropathogen-surveillance/>

To subscribe to this report, email WCLN@slh.wisc.edu