

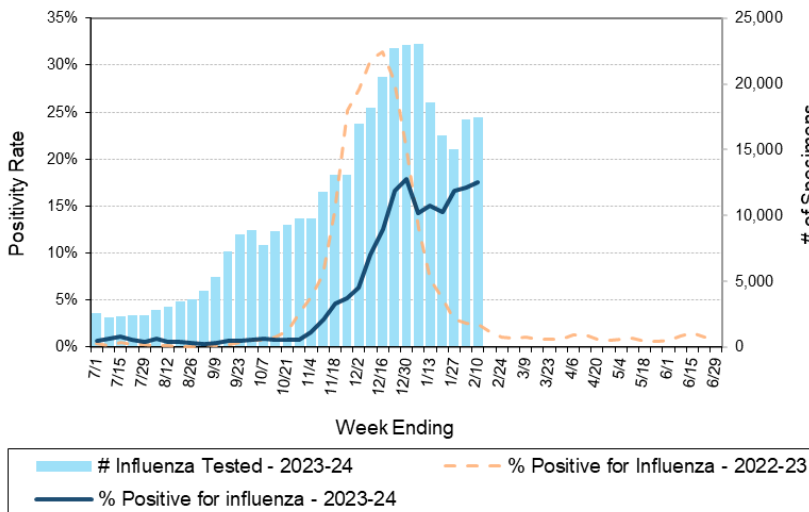
# Laboratory Surveillance Report

**\*\* For a selection of pathogens, participating Wisconsin clinical laboratories voluntarily report to WSLH on a weekly basis the total number of tests performed, and the number of those tests with positive results.**

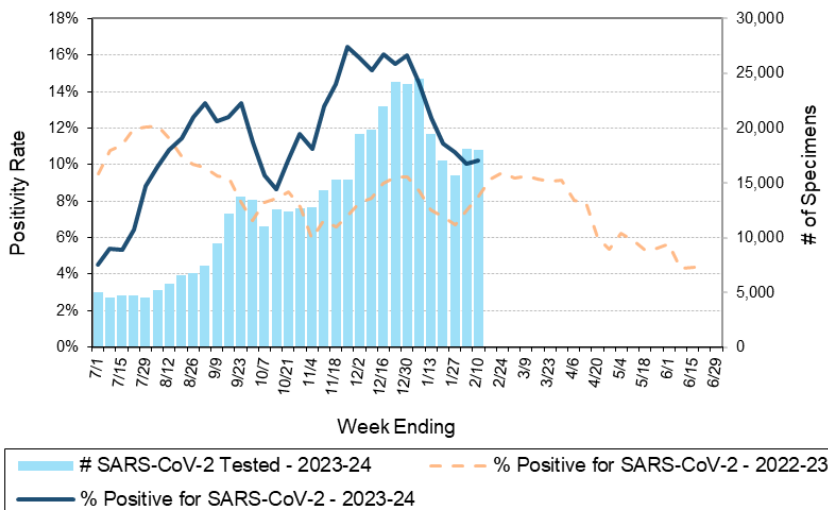
- To enhance surveillance activities, each week please send:**
- **PCR/Molecular Testing sites:**
    - ◊ **One Influenza-related hospitalization**
    - ◊ Influenza A specimens:
      - That fail to subtype (Ct <35)
      - With swine or avian exposure
      - With international travel history
  - **All Testing Sites:**
    - ◊ **Up to 5** SARS-CoV-2 positive specimens

- Respiratory Snapshot:**
- Influenza activity is **high** in Wisconsin (17.5%) and nationally (15.7%).
    - **Influenza A** is the dominant strain circulating (62%)
    - **H1pdm09** is the dominant Influenza A subtype circulating (59%).
  - Seasonal coronavirus activity is **increasing** in Wisconsin (8.8%).
  - RSV (7.0%), Rhino/Enterovirus (9.9%) and SARS-CoV-2 (10.2%) activities are **high** in Wisconsin.
- Enteric Snapshot:**
- Norovirus activity is **high** (9.7%) in Wisconsin.
- Other:**
- Group A Streptococcus activity in Wisconsin is **high** (20.3%).

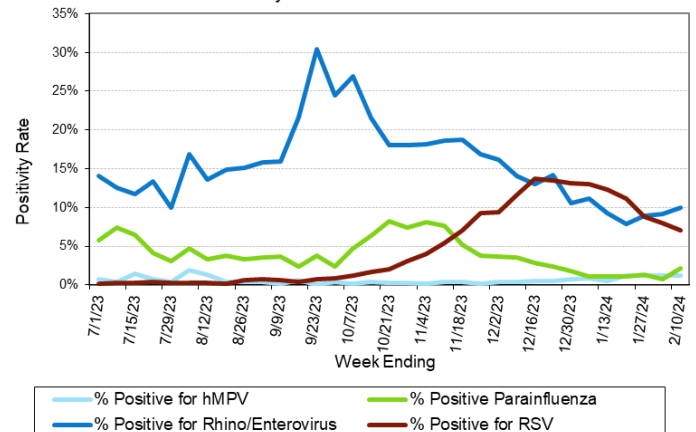
Number Tested and Positivity Rate for **Influenza** by PCR at Wisconsin Laboratories



Number Tested and Positivity Rate for **SARS-CoV-2** by PCR at Wisconsin Laboratories



Positivity Rate of **hMPV, Parainfluenza, Rhino/Enterovirus and RSV** by PCR at Wisconsin Laboratories



# Laboratory Surveillance Report

## Enteric Pathogens

Week Ending 2/10/24

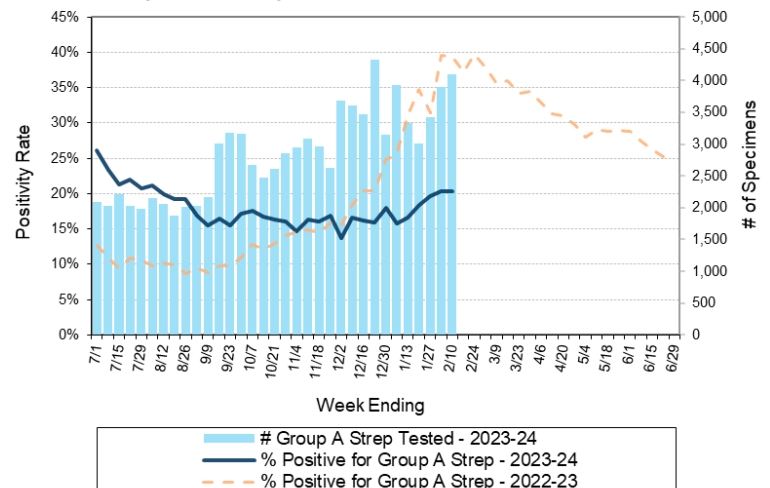
	# Tested	% Positive
Norovirus	580	9.7%
Sapovirus	475	5.7%
<i>Campylobacter</i>	806	2.5%
Astrovirus	475	2.1%
<i>Salmonella</i>	806	1.4%
STEC	806	1.2%
Rotavirus	575	1.0%
<i>Cryptosporidium</i>	572	1.0%
<i>E. coli</i> 0157	219	0.9%
Adenovirus 40/41	475	0.8%
<i>Giardia</i>	572	0.5%
<i>Yersinia enterocolitica</i>	617	0.3%
<i>Shigella</i> /EIEC	742	0.1%
<i>Aeromonas</i>	83	0.0%
<i>Plesiomonas shigelloides</i>	518	0.0%
<i>Vibrio</i>	605	0.0%
<i>Cyclospora</i>	507	0.0%
<i>Entamoeba histolytica</i>	584	0.0%

## Respiratory Pathogens

Week Ending 2/10/24

	# Tested	% Positive
Influenza	17426	17.5%
SARS-CoV-2	17989	10.2%
Rhinovirus/Enterovirus	1812	9.9%
Seasonal coronaviruses	1061	8.8% ↑
RSV	13561	7.0%
Adenovirus	1198	2.8%
Parainfluenza	1149	2.2%
Human metapneumovirus	1187	1.2%
<i>Bordetella pertussis</i>	717	0.1%

Number Tested and Positivity Rate for **Group A Streptococcus** by PCR at Wisconsin Laboratories



## Additional Information

- Additional information on respiratory pathogens can be found on the DHS website:

<https://www.dhs.wisconsin.gov/disease/respiratory.htm>

- The WSLH SARS-CoV-2 genomic dashboard is available here:

<https://dataportal.slh.wisc.edu/sc2dashboard>

- The influenza, RSV and respiratory virus activity graphs can be viewed here:

<http://www.slh.wisc.edu/wcln-surveillance/surveillance/virology-surveillance/>

- The bacterial, viral and parasitic activity graphs can be viewed here:

<http://www.slh.wisc.edu/wcln-surveillance/surveillance/gastropathogen-surveillance/>

To subscribe to this report, email [WCLN@slh.wisc.edu](mailto:WCLN@slh.wisc.edu)