

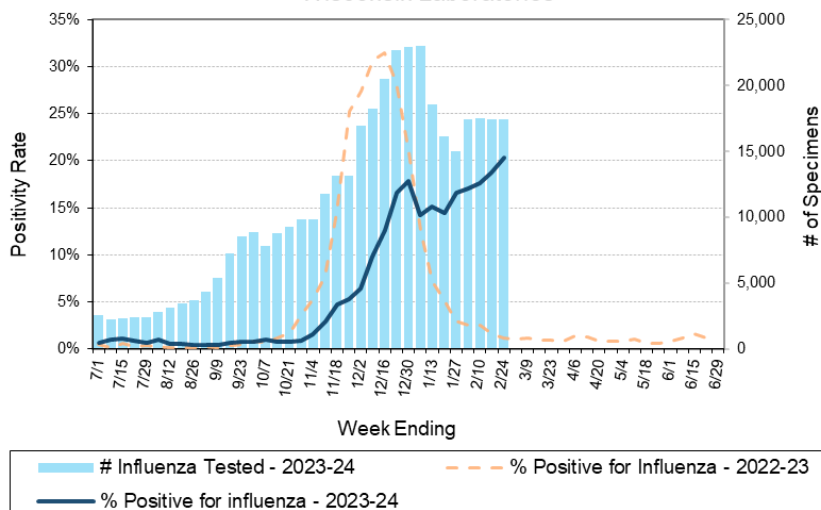
Laboratory Surveillance Report

**** For a selection of pathogens, participating Wisconsin clinical laboratories voluntarily report to WSLH on a weekly basis the total number of tests performed, and the number of those tests with positive results.**

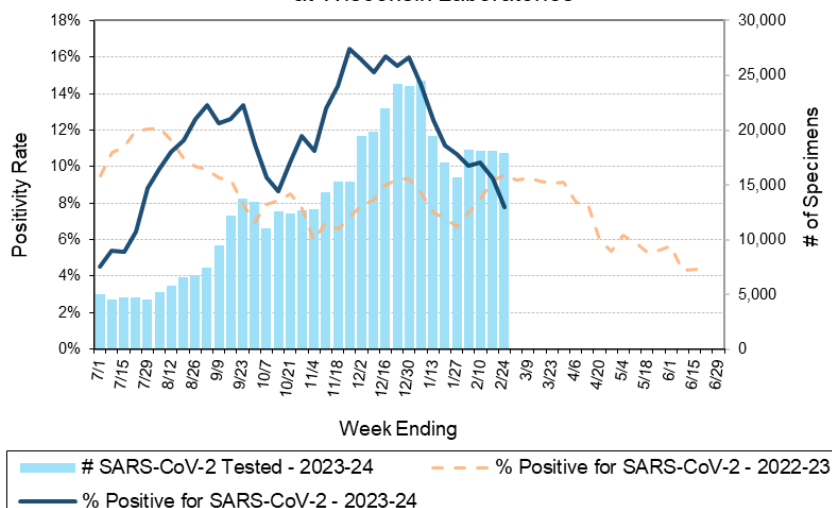
To enhance surveillance activities, each week please send:

- **PCR/Molecular Testing sites:**
 - ◊ **One Influenza-related hospitalization**
 - ◊ Influenza A specimens:
 - That fail to subtype (Ct <35)
 - With swine or avian exposure
 - With international travel history
- **All Testing Sites:**
 - ◊ **Up to 5** SARS-CoV-2 positive specimens

Number Tested and Positivity Rate for **Influenza** by PCR at Wisconsin Laboratories



Number Tested and Positivity Rate for **SARS-CoV-2** by PCR at Wisconsin Laboratories



Respiratory Snapshot:

- Influenza activity is **high** in Wisconsin (20.3%) and nationally (14.2%).
 - **Influenza A** is the dominant strain circulating (66%)
 - **H1pdm09** is the dominant Influenza A subtype circulating (55%).
- Rhino/Enterovirus (10.1%) and Seasonal coronavirus (9.6%) activities are **high** in Wisconsin.

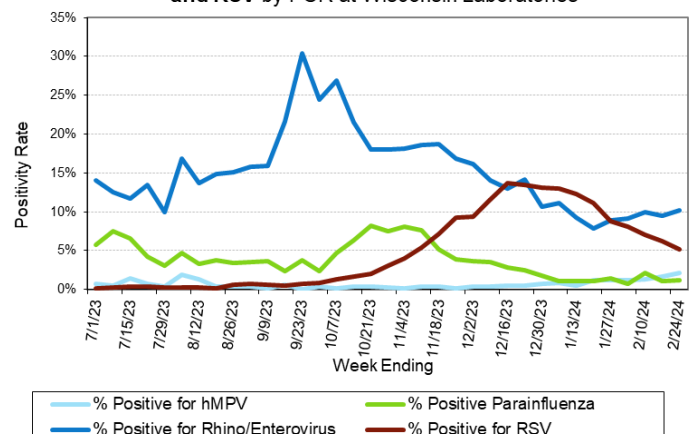
Enteric Snapshot:

- Norovirus activity is **high** (15.8%) in Wisconsin.

Other:

- Group A Streptococcus activity in Wisconsin is **high** (23.3%).

Positivity Rate of **hMPV, Parainfluenza, Rhino/Enterovirus and RSV** by PCR at Wisconsin Laboratories



Laboratory Surveillance Report

Enteric Pathogens

Week Ending 2/24/24

	# Tested	% Positive
Norovirus***	550	15.8%
Sapovirus	459	5.2%
Astrovirus	459	2.0%
<i>Campylobacter</i>	688	1.7%
<i>Salmonella</i>	688	1.5%
<i>Yersinia enterocolitica</i>	534	1.3%
Rotavirus	534	1.3%
<i>Cryptosporidium</i>	526	1.1%
STEC	688	0.9%
Adenovirus 40/41	459	0.9%
<i>Vibrio</i>	534	0.6%
<i>Giardia</i>	517	0.6%
<i>Shigella/EIEC</i>	660	0.2%
<i>Aeromonas</i>	94	0.0%
<i>E. coli</i> 0157	164	0.0%
<i>Plesiomonas shigelloides</i>	459	0.0%
<i>Cyclospora</i>	459	0.0%
<i>Entamoeba histolytica</i>	517	0.0%

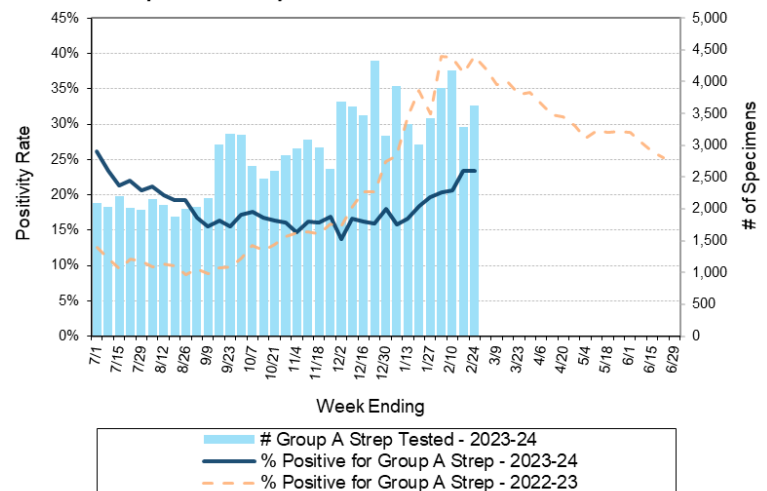
***BioMerieux has announced an increased risk of false positive norovirus results with the BioFire FilmArray GI panel, which may increase the statewide norovirus percent positivity ***

Respiratory Pathogens

Week Ending 2/24/24

	# Tested	% Positive
Influenza	17464	20.3%
Rhinovirus/Enterovirus	1579	10.1%
Seasonal coronaviruses	930	9.6%
SARS-CoV-2	17910	7.8% ↓
RSV	13352	5.2%
Adenovirus	990	2.3%
Human metapneumovirus	1011	2.1%
Parainfluenza	1062	1.2%
<i>Bordetella pertussis</i>	677	0.0%

Number Tested and Positivity Rate for **Group A Streptococcus** by PCR at Wisconsin Laboratories



Additional Information

- Additional information on respiratory pathogens can be found on the DHS website:
<https://www.dhs.wisconsin.gov/disease/respiratory.htm>
- The WSLH SARS-CoV-2 genomic dashboard is available here:
<https://dataportal.slh.wisc.edu/sc2dashboard>
- The influenza, RSV and respiratory virus activity graphs can be viewed here:
<http://www.slh.wisc.edu/wcln-surveillance/surveillance/virology-surveillance/>
- The bacterial, viral and parasitic activity graphs can be viewed here:
<http://www.slh.wisc.edu/wcln-surveillance/surveillance/gastropathogen-surveillance/>

To subscribe to this report, email WCLN@slh.wisc.edu