

# Laboratory Surveillance Report

*\*\* For a selection of pathogens, participating Wisconsin clinical laboratories voluntarily report to WSLH on a weekly basis the total number of tests performed, and the number of those tests with positive results.*

**To enhance surveillance activities, each week please send:**

- **PCR/Molecular Testing sites:**
  - ◊ [One Influenza-related hospitalization](#)
  - ◊ Influenza A specimens:
    - That fail to subtype (Ct <35)
    - With swine or avian exposure
    - With international travel history
- **All Testing Sites:**
  - ◊ [Up to 5](#) SARS-CoV-2 positive specimens

**Respiratory Snapshot:**

- Influenza activity is **high** in Wisconsin (22.0%) and nationally (15.4%).
  - **Influenza A** is the dominant strain circulating (54%)
  - **H1pdm09** is the dominant Influenza A subtype circulating (55%).
- Rhino/Enterovirus (9.2%) and Seasonal coronavirus (10.1%) activities are **high** in Wisconsin.

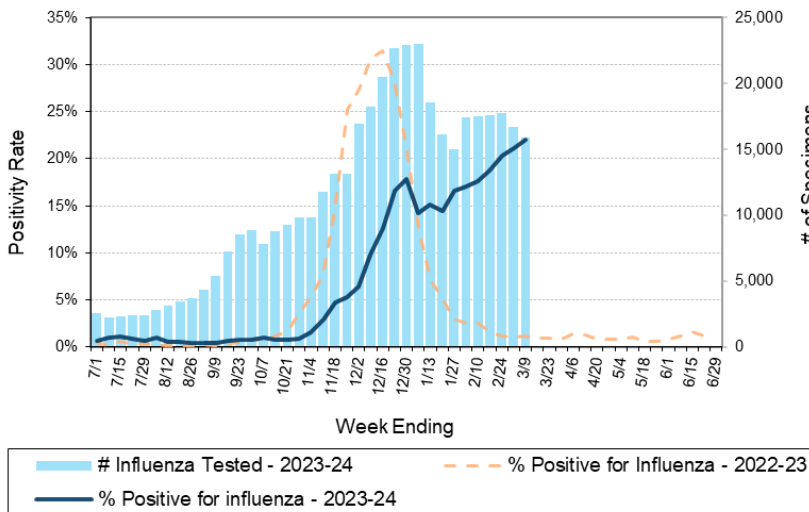
**Enteric Snapshot:**

- Norovirus activity is **high** (12.4%) in Wisconsin.

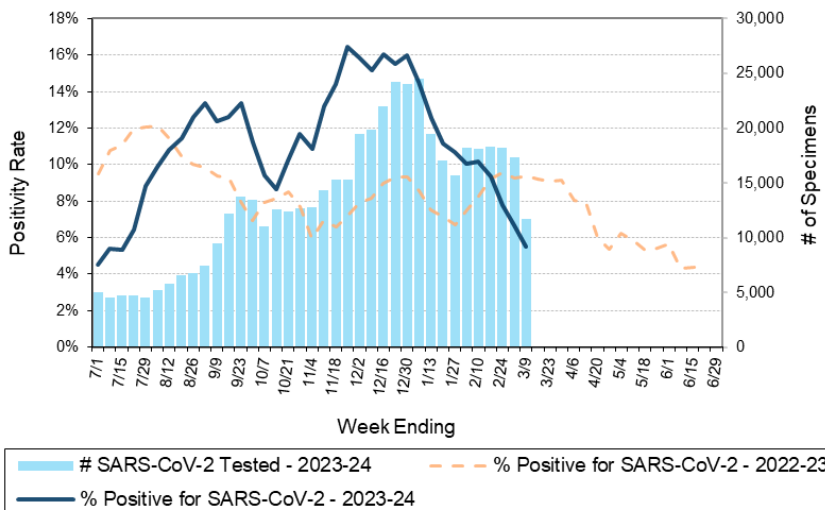
**Other:**

- Group A Streptococcus activity in Wisconsin is **high** (21.2%).

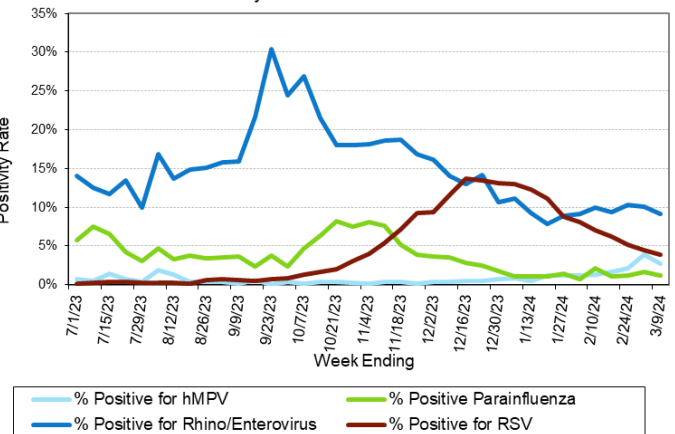
Number Tested and Positivity Rate for **Influenza** by PCR at Wisconsin Laboratories



Number Tested and Positivity Rate for **SARS-CoV-2** by PCR at Wisconsin Laboratories



Positivity Rate of **hMPV, Parainfluenza, Rhino/Enterovirus and RSV** by PCR at Wisconsin Laboratories




32nd Annual


Wisconsin Virology Conference

Tuesday, May 21, 2024

Registration opening soon!

# Laboratory Surveillance Report

## Enteric Pathogens

Week Ending 3/9/24

	# Tested	% Positive
Norovirus***	629	12.4%
Sapovirus	537	6.1%
Astrovirus	537	2.2%
Rotavirus	620	1.9%
<i>Campylobacter</i>	825	1.5%
STEC	825	1.3%
Adenovirus 40/41	537	0.9%
<i>Yersinia enterocolitica</i>	658	0.8%
<i>Salmonella</i>	838	0.7%
<i>Giardia</i>	603	0.5%
<i>Cryptosporidium</i>	603	0.5%
<i>Vibrio</i>	658	0.3%
<i>Plesiomonas shigelloides</i>	576	0.2%
<i>Shigella/EIEC</i>	771	0.1%
<i>Entamoeba histolytica</i>	603	0.0%
<i>Cyclospora</i>	537	0.0%
<i>E. coli</i> 0157	228	0.0%
<i>Aeromonas</i>	94	0.0%

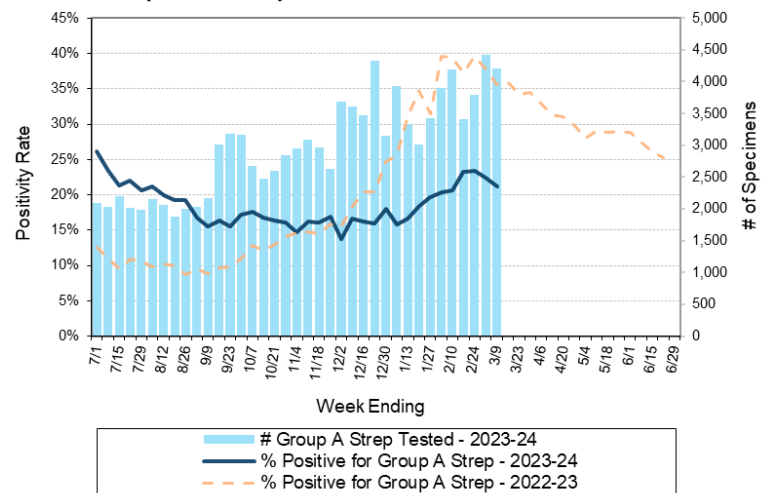
\*\*\*BioMerieux has announced an increased risk of false positive norovirus results with the BioFire FilmArray GI panel, which may increase the statewide norovirus percent positivity \*\*\*

## Respiratory Pathogens

Week Ending 3/9/24

	# Tested	% Positive
Influenza	15934	22.0%
Seasonal coronaviruses	941	10.1%
Rhinovirus/Enterovirus	1699	9.2%
SARS-CoV-2	11683	5.5%
RSV	12216	3.9%
Human metapneumovirus	1055	2.7%
Adenovirus	1104	1.5%
Parainfluenza	1099	1.2%
<i>Bordetella pertussis</i>	808	0.1%

Number Tested and Positivity Rate for Group A Streptococcus by PCR at Wisconsin Laboratories



## Additional Information

- Additional information on respiratory pathogens can be found on the DHS website: <https://www.dhs.wisconsin.gov/disease/respiratory.htm>
- The WSLH SARS-CoV-2 genomic dashboard is available here: <https://dataportal.slh.wisc.edu/sc2dashboard>
- The influenza, RSV and respiratory virus activity graphs can be viewed here: <http://www.slh.wisc.edu/wcln-surveillance/surveillance/virology-surveillance/>
- The bacterial, viral and parasitic activity graphs can be viewed here: <http://www.slh.wisc.edu/wcln-surveillance/surveillance/gastropathogen-surveillance/>

To subscribe to this report, email [WCLN@slh.wisc.edu](mailto:WCLN@slh.wisc.edu)