

Laboratory Surveillance Report

** For a selection of pathogens, participating Wisconsin clinical laboratories voluntarily report to WSLH on a weekly basis the total number of tests performed, and the number of those tests with positive results.

To enhance surveillance activities, each week please send:

- **PCR/Molecular Testing sites:**
 - ◊ [One Influenza-related hospitalization](#)
 - ◊ Influenza A specimens:
 - That fail to subtype (Ct <35)
 - With swine or avian exposure
 - With international travel history
- **All Testing Sites:**
 - ◊ [Up to 5](#) SARS-CoV-2 positive specimens

Respiratory Snapshot:

- Influenza activity is **high** in Wisconsin (18.2%) and nationally (10.5%).
 - **Influenza A** is the dominant strain circulating (59.3%)
 - **H3** is the dominant Influenza A subtype circulating (56%).
- Rhino/Enterovirus (10.1%) activity is **high** in Wisconsin.

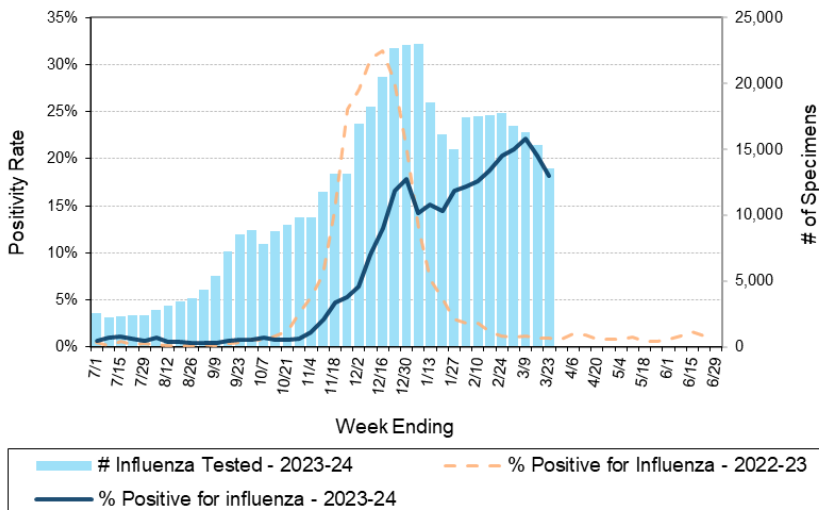
Enteric Snapshot:

- Norovirus activity is **high** (17.5%) in Wisconsin.

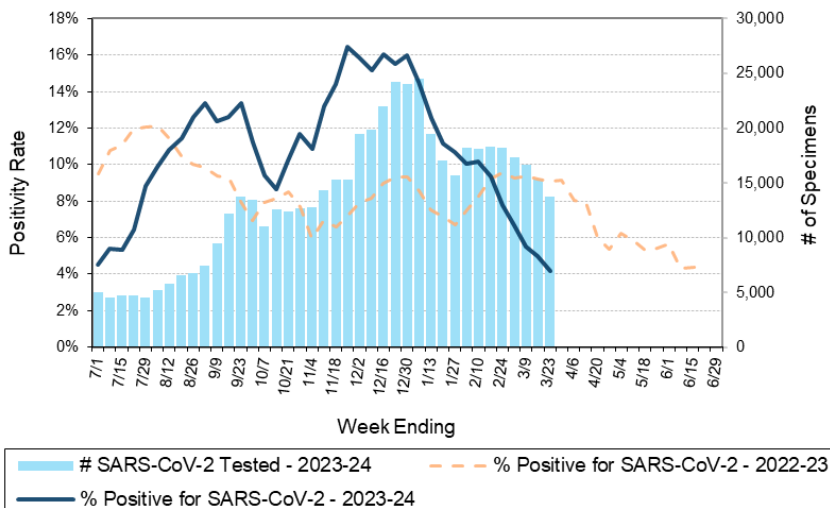
Other:

- Group A Streptococcus activity in Wisconsin is **high** (23.9%).

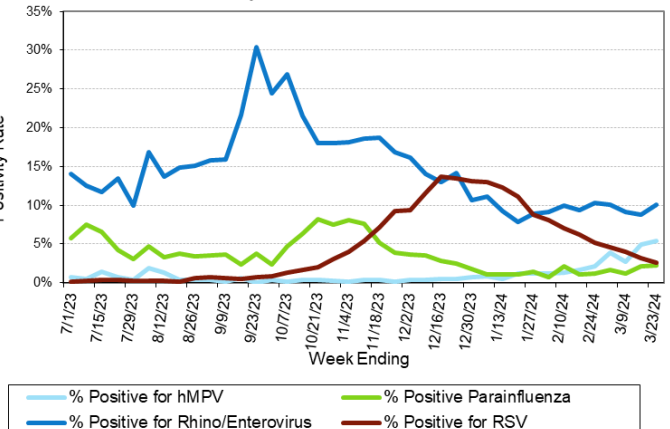
Number Tested and Positivity Rate for **Influenza** by PCR at Wisconsin Laboratories



Number Tested and Positivity Rate for **SARS-CoV-2** by PCR at Wisconsin Laboratories



Positivity Rate of hMPV, Parainfluenza, Rhino/Enterovirus and RSV by PCR at Wisconsin Laboratories



32nd Annual
Wisconsin Virology Conference
Tuesday, May 21, 2024

Registration Open!

[CLICK HERE](#)

Laboratory Surveillance Report

Enteric Pathogens

Week Ending 3/23/24

	# Tested	% Positive
Norovirus***	498	17.5%
Sapovirus	402	4.0%
Rotavirus	489	3.5%
Astrovirus	402	3.0%
<i>Campylobacter</i>	689	1.9%
<i>Salmonella</i>	689	1.7%
Adenovirus 40/41	402	1.2%
<i>E. coli</i> 0157	198	1.0%
<i>Giardia</i>	506	1.0%
STEC	689	0.6%
<i>Shigella/EIEC</i>	676	0.4%
<i>Yersinia enterocolitica</i>	534	0.2%
<i>Cryptosporidium</i>	506	0.2%
<i>Aeromonas</i>	13	0.0%
<i>Plesiomonas shigelloides</i>	447	0.0%
<i>Vibrio</i>	521	0.0%
<i>Cyclospora</i>	415	0.0%
<i>Entamoeba histolytica</i>	493	0.0%

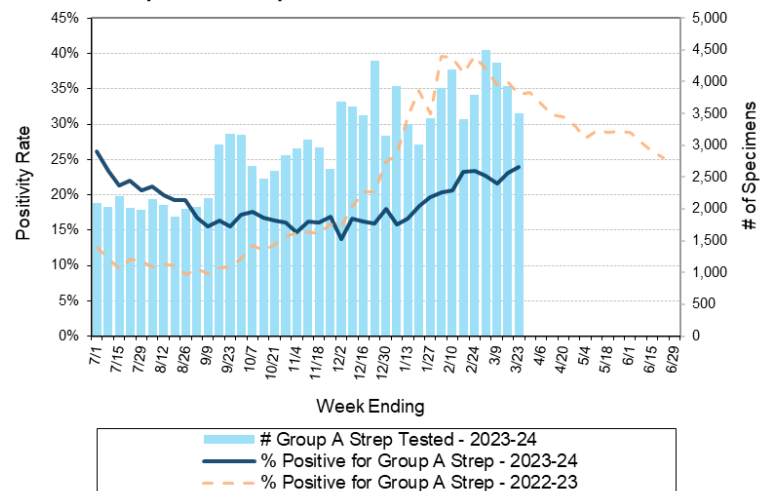
***BioMerieux has announced an increased risk of false positive norovirus results with the BioFire FilmArray GI panel, which may increase the statewide norovirus percent positivity ***

Respiratory Pathogens

Week Ending 3/23/24

	# Tested	% Positive
Influenza	13516	18.2%
Rhinovirus/Enterovirus	845	10.1%
Seasonal coronaviruses	728	5.9%
Human metapneumovirus	903	5.4%
SARS-CoV-2	13716	4.2%
RSV	10040	2.6%
Parainfluenza	882	2.3%
Adenovirus	875	2.2%
<i>Bordetella pertussis</i>	500	0.0%

Number Tested and Positivity Rate for Group A *Streptococcus* by PCR at Wisconsin Laboratories



Additional Information

- Additional information on respiratory pathogens can be found on the DHS website: <https://www.dhs.wisconsin.gov/disease/respiratory.htm>
- The WSLH SARS-CoV-2 genomic dashboard is available here: <https://dataportal.slh.wisc.edu/sc2dashboard>
- The influenza, RSV and respiratory virus activity graphs can be viewed here: <http://www.slh.wisc.edu/wcln-surveillance/surveillance/virology-surveillance/>
- The bacterial, viral and parasitic activity graphs can be viewed here: <http://www.slh.wisc.edu/wcln-surveillance/surveillance/gastropathogen-surveillance/>

To subscribe to this report, email WCLN@slh.wisc.edu