

Laboratory Surveillance Report

** For a selection of pathogens, participating Wisconsin clinical laboratories voluntarily report to WSLH on a weekly basis the total number of tests performed, and the number of those tests with positive results.

To enhance surveillance activities, each week please send:

- **PCR/Molecular Testing sites:**
 - ◊ [One Influenza-related hospitalization](#)
 - ◊ Influenza A specimens:
 - That fail to subtype (Ct <35)
 - With swine or avian exposure
 - With international travel history
- **All Testing Sites:**
 - ◊ [Up to 5](#) SARS-CoV-2 positive specimens

Respiratory Snapshot:

- Influenza activity is **decreasing** in Wisconsin (12.8%) and nationally (7.7%).
 - **Influenza A** is the dominant strain circulating (53%)
 - **H3** is the dominant Influenza A subtype circulating (57%).
- Rhino/Enterovirus (10.3%) and hMPV (9.4%) activities are **high** in Wisconsin.

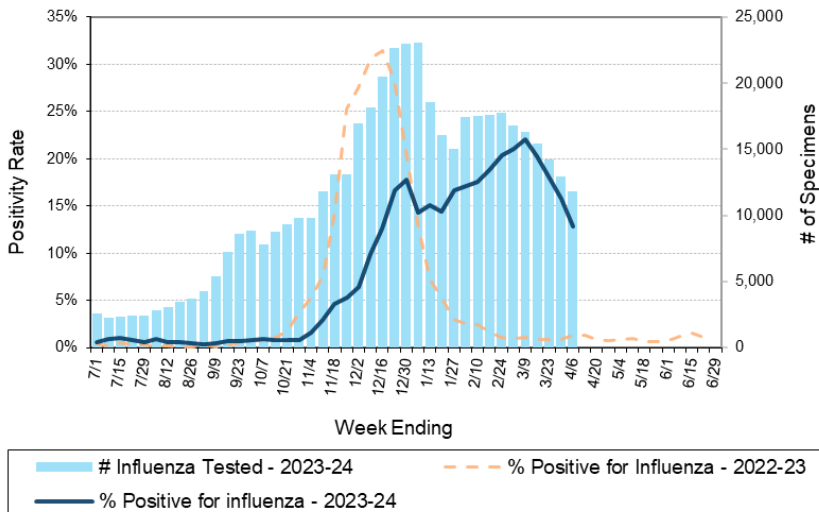
Enteric Snapshot:

- Norovirus activity is **high** (16.0%) in Wisconsin.

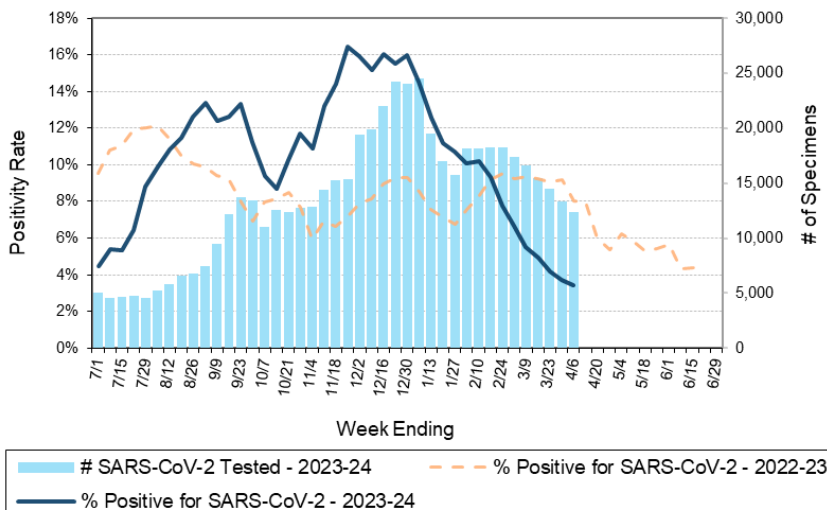
Other:

- Group A Streptococcus activity in Wisconsin is **high** (24.0%).

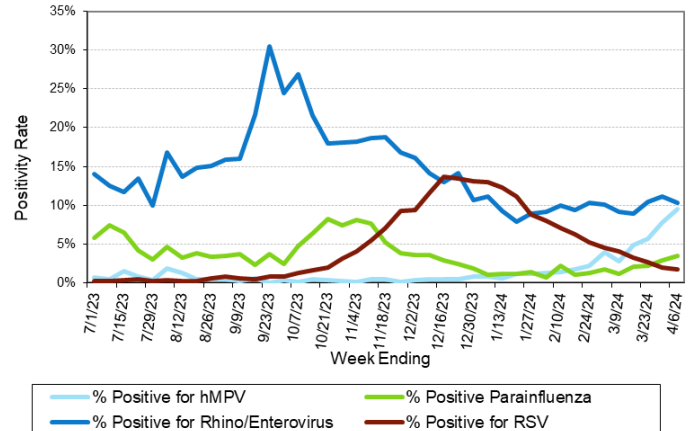
Number Tested and Positivity Rate for **Influenza** by PCR at Wisconsin Laboratories



Number Tested and Positivity Rate for **SARS-CoV-2** by PCR at Wisconsin Laboratories



Positivity Rate of **hMPV, Parainfluenza, Rhino/Enterovirus and RSV** by PCR at Wisconsin Laboratories





32nd Annual



Wisconsin Virology Conference

Tuesday, May 21, 2024

Registration Open! [CLICK HERE](#)

Laboratory Surveillance Report

Enteric Pathogens

Week Ending 4/6/24

	# Tested	% Positive
Norovirus***	651	16.0%
Rotavirus	639	6.9%
Sapovirus	557	5.2%
Astrovirus	557	2.9%
<i>Campylobacter</i>	794	2.6%
<i>Salmonella</i>	794	1.6%
STEC	794	1.1%
<i>Giardia</i>	642	0.8%
<i>E. coli</i> 0157	273	0.7%
<i>Yersinia enterocolitica</i>	678	0.6%
<i>Plesiomonas shigelloides</i>	596	0.5%
<i>Shigella</i> /EIEC	741	0.5%
Adenovirus 40/41	557	0.5%
<i>Cryptosporidium</i>	642	0.3%
<i>Cyclospora</i>	572	0.2%
<i>Entamoeba histolytica</i>	627	0.2%
<i>Aeromonas</i>	65	0.0%
<i>Vibrio</i>	663	0.0%

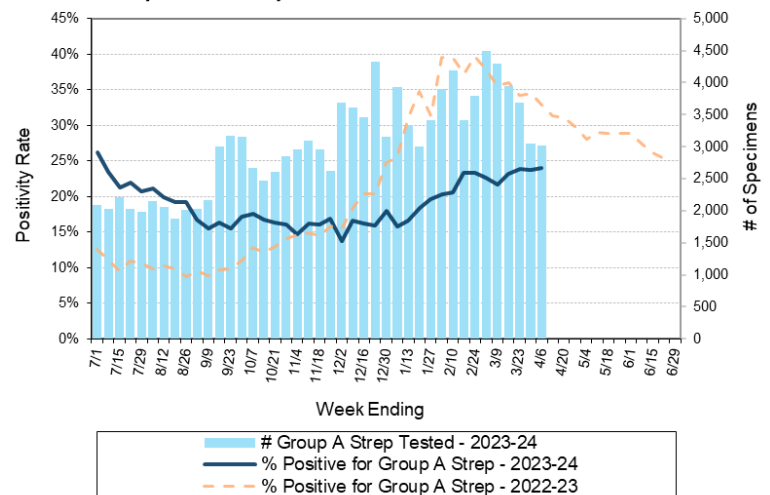
***BioMerieux has announced an increased risk of false positive norovirus results with the BioFire FilmArray GI panel, which may increase the statewide norovirus percent positivity ***

Respiratory Pathogens

Week Ending 4/6/24

	# Tested	% Positive
Influenza	11845	12.8%
Rhinovirus/Enterovirus	1617	10.3%
Human metapneumovirus	1134	9.4%
Seasonal coronaviruses	1024	4.4%
Parainfluenza	1110	3.5%
SARS-CoV-2	12380	3.4%
RSV	9014	1.7%
Adenovirus	1115	1.2%
<i>Bordetella pertussis</i>	807	0.0%

Number Tested and Positivity Rate for **Group A Streptococcus** by PCR at Wisconsin Laboratories



Additional Information

- Additional information on respiratory pathogens can be found on the DHS website: <https://www.dhs.wisconsin.gov/disease/respiratory.htm>
- The WSLH SARS-CoV-2 genomic dashboard is available here: <https://dataportal.slh.wisc.edu/sc2dashboard>
- The influenza, RSV and respiratory virus activity graphs can be viewed here: <http://www.slh.wisc.edu/wcln-surveillance/surveillance/virology-surveillance/>
- The bacterial, viral and parasitic activity graphs can be viewed here: <http://www.slh.wisc.edu/wcln-surveillance/surveillance/gastropathogen-surveillance/>

To subscribe to this report, email WCLN@slh.wisc.edu