

Laboratory Surveillance Report

** For a selection of pathogens, participating Wisconsin clinical laboratories voluntarily report to WSLH on a weekly basis the total number of tests performed, and the number of those tests with positive results.

To enhance surveillance activities, each week please send:

- **PCR/Molecular Testing sites:**
 - ◊ [One Influenza-related hospitalization](#)
 - ◊ Influenza A specimens:
 - That fail to subtype (Ct <35)
 - With swine or avian exposure
 - With international travel history
- **All Testing Sites:**
 - ◊ [Up to 5](#) SARS-CoV-2 positive specimens

Respiratory Snapshot:

- Influenza activity is **decreasing** in Wisconsin (7.9%) and nationally (4.8%).
 - **Influenza A** is the dominant strain circulating (56%)
 - **H3** is the dominant Influenza A subtype circulating (67%).
- Rhino/Enterovirus (14.4%) and hMPV (8.7%) activities are **high** in Wisconsin.

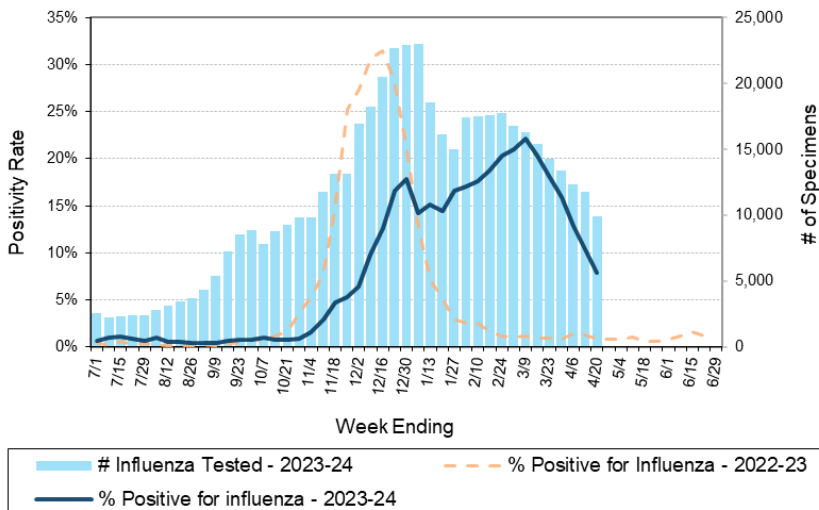
Enteric Snapshot:

- Norovirus activity is **high** (12.3%) in Wisconsin.

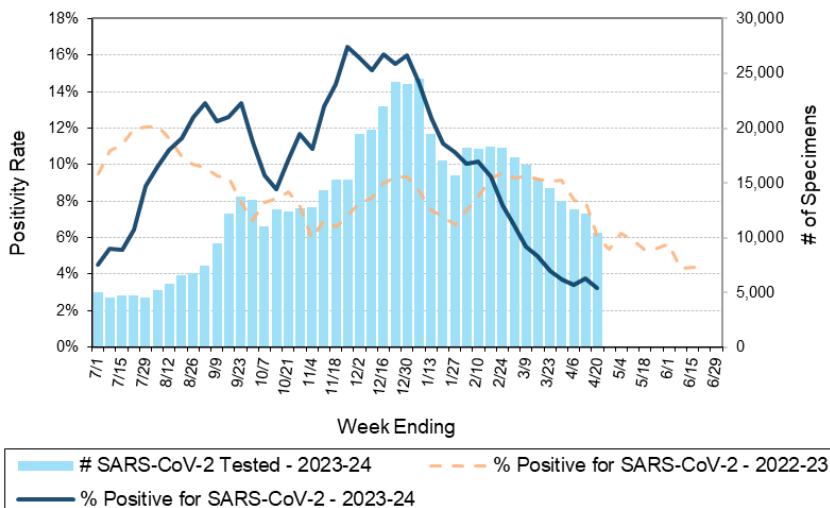
Other:

- Group A Streptococcus activity in Wisconsin is **high** (24.5%).

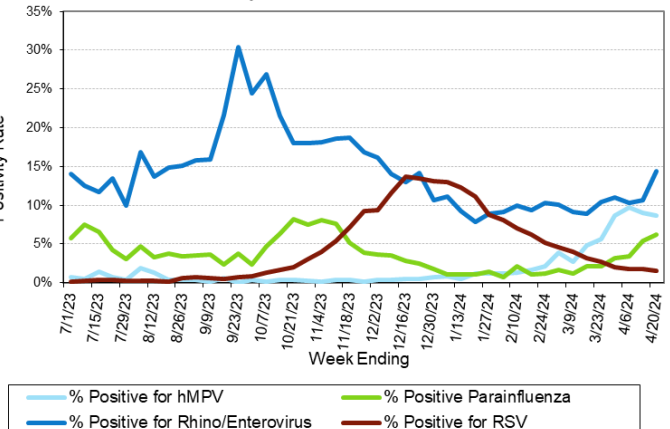
Number Tested and Positivity Rate for **Influenza** by PCR at Wisconsin Laboratories



Number Tested and Positivity Rate for **SARS-CoV-2** by PCR at Wisconsin Laboratories



Positivity Rate of **hMPV, Parainfluenza, Rhino/Enterovirus and RSV** by PCR at Wisconsin Laboratories



32nd Annual
Wisconsin Virology Conference
Tuesday, May 21, 2024

Registration Open!

[CLICK HERE](#)

Laboratory Surveillance Report

Enteric Pathogens

Week Ending 4/20/24

	# Tested	% Positive
Norovirus***	620	12.3%
Rotavirus	604	4.8%
Sapovirus	525	4.2%
<i>Campylobacter</i>	747	3.2%
Astrovirus	525	2.1%
<i>Cryptosporidium</i>	600	1.3%
Adenovirus 40/41	525	0.8%
STEC	747	0.7%
<i>Giardia</i>	600	0.7%
<i>Yersinia enterocolitica</i>	652	0.6%
<i>Salmonella</i>	747	0.5%
<i>Plesiomonas shigelloides</i>	561	0.4%
<i>Entamoeba histolytica</i>	600	0.3%
<i>Shigella/EIEC</i>	735	0.1%
<i>Aeromonas</i>	84	0.0%
<i>E. coli</i> 0157	267	0.0%
<i>Vibrio</i>	640	0.0%
<i>Cyclospora</i>	525	0.0%

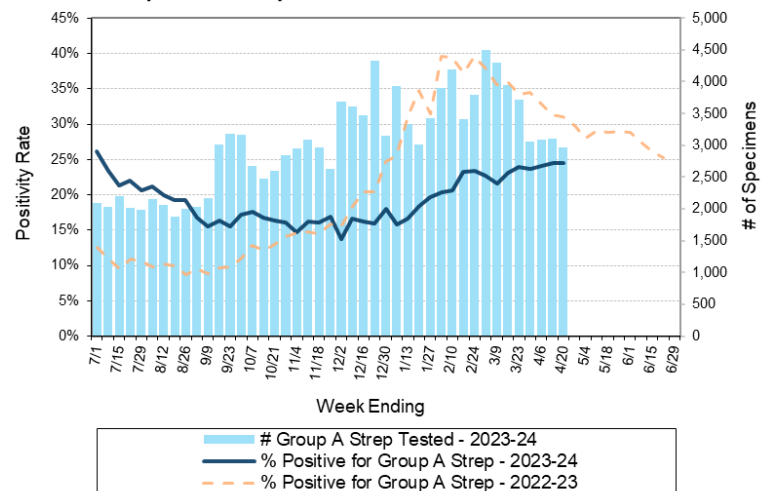
***BioMerieux has announced an increased risk of false positive norovirus results with the BioFire FilmArray GI panel, which may increase the statewide norovirus percent positivity ***

Respiratory Pathogens

Week Ending 4/20/24

	# Tested	% Positive
Rhinovirus/Enterovirus	1260	14.4%
Human metapneumovirus	888	8.7%
Influenza	9945	7.9%
Parainfluenza	849	6.2%
Seasonal coronaviruses	707	3.8%
SARS-CoV-2	10460	3.2%
Adenovirus	888	2.5%
RSV	7901	1.5%
<i>Bordetella pertussis</i>	481	0.0%

Number Tested and Positivity Rate for Group A *Streptococcus* by PCR at Wisconsin Laboratories



Additional Information

- Additional information on respiratory pathogens can be found on the DHS website: <https://www.dhs.wisconsin.gov/disease/respiratory.htm>
- The WSLH SARS-CoV-2 genomic dashboard is available here: <https://dataportal.slh.wisc.edu/sc2dashboard>
- The influenza, RSV and respiratory virus activity graphs can be viewed here: <http://www.slh.wisc.edu/wcln-surveillance/surveillance/virology-surveillance/>
- The bacterial, viral and parasitic activity graphs can be viewed here: <http://www.slh.wisc.edu/wcln-surveillance/surveillance/gastropathogen-surveillance/>

To subscribe to this report, email WCLN@slh.wisc.edu