

Laboratory Surveillance Report

** For a selection of pathogens, participating Wisconsin clinical laboratories voluntarily report to WSLH on a weekly basis the total number of tests performed, and the number of those tests with positive results.

To enhance surveillance activities, and monitor for avian influenza, each week please send:

- **PCR/Molecular Testing sites:**
 - ◊ **All influenza positive specimens**
 - ◊ Especially, Influenza A specimens:
 - That fail to subtype (Ct <35)
 - **With swine, bovine or avian exposure**
 - With international travel history
- **All Testing Sites:**
 - ◊ **Up to 5** SARS-CoV-2 positive specimens



Respiratory Snapshot:

- Influenza activity is **decreasing** in Wisconsin (4.5%) and nationally (3.1%).
 - **Influenza A** is the dominant strain circulating (70.6%)
 - **H3** is the dominant Influenza A subtype circulating (53.7%).
- Rhino/Enterovirus (16.2%), Parainfluenza (9.2%) and hMPV (8.4%) activities are **high** in Wisconsin.

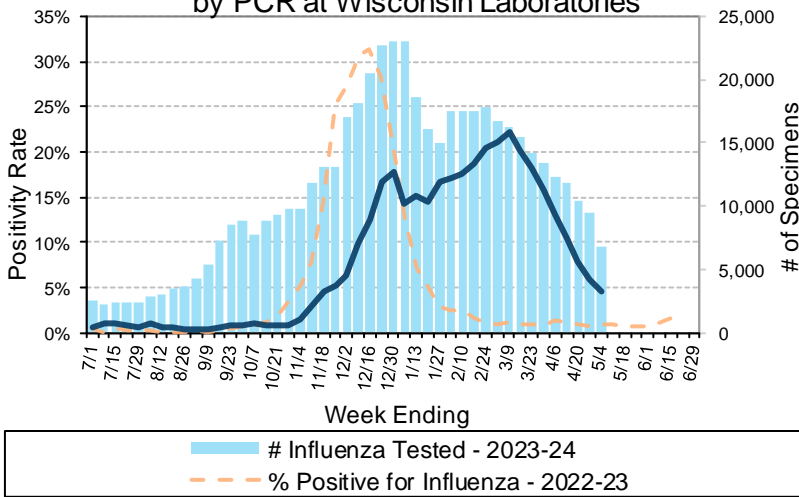
Enteric Snapshot:

- Norovirus activity is **decreasing** (7.9%) in Wisconsin.

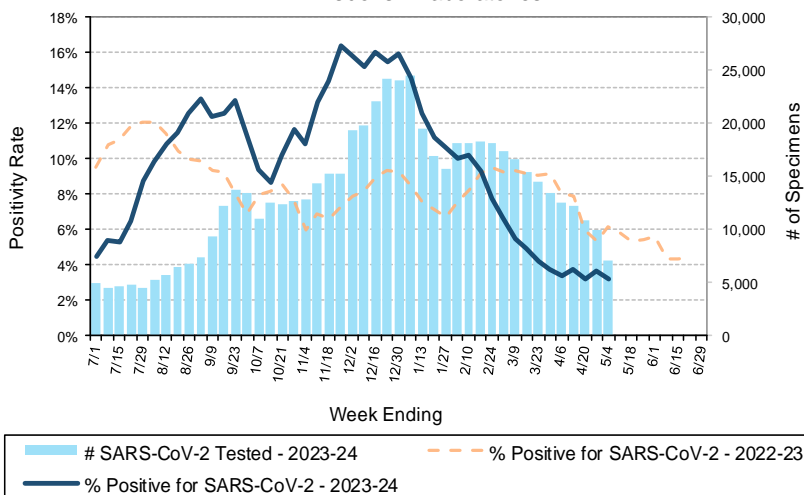
Other:

- Group A Streptococcus activity in Wisconsin is **high** (23.9%).

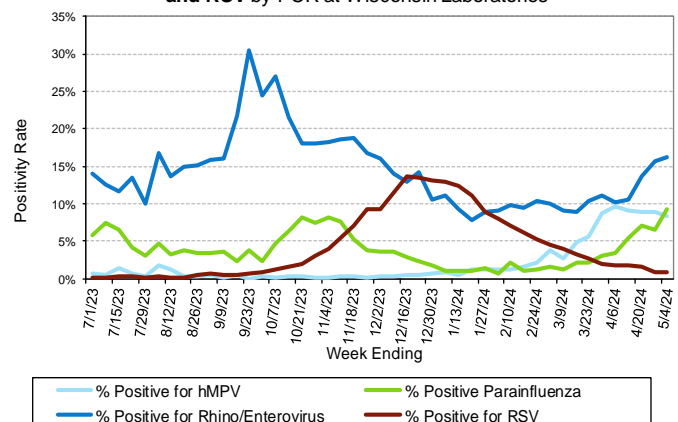
Number Tested and Positivity Rate for Influenza by PCR at Wisconsin Laboratories



Number Tested and Positivity Rate for SARS-CoV-2 by PCR at Wisconsin Laboratories



Positivity Rate of hMPV, Parainfluenza, Rhino/Enterovirus and RSV by PCR at Wisconsin Laboratories



Laboratory Surveillance Report

Enteric Pathogens

Week Ending 5/4/24

	# Tested	% Positive
Norovirus***	517	7.9%
Rotavirus	515	7.0%
Sapovirus	426	3.3%
Astrovirus	426	2.6%
<i>Salmonella</i>	631	2.4%
<i>Campylobacter</i>	651	1.8%
Adenovirus 40/41	426	1.2%
STEC	631	1.1%
<i>Cryptosporidium</i>	499	0.6%
<i>Plesiomonas shigelloides</i>	464	0.4%
<i>Yersinia enterocolitica</i>	534	0.4%
<i>E. coli</i> 0157	289	0.3%
<i>Shigella</i> /EIEC	619	0.3%
<i>Entamoeba histolytica</i>	499	0.2%
<i>Giardia</i>	499	0.2%
Aeromonas	83	0.0%
<i>Vibrio</i>	534	0.0%
<i>Cyclospora</i>	426	0.0%

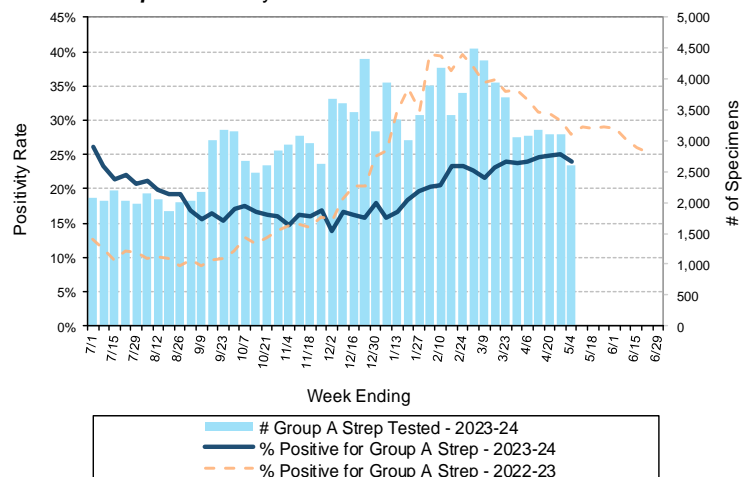
***BioMerieux has announced an increased risk of false positive norovirus results with the BioFire FilmArray GI panel, which may increase the statewide norovirus percent positivity ***

Respiratory Pathogens

Week Ending 5/4/24

	# Tested	% Positive
Rhinovirus/Enterovirus	1063	16.2%
Parainfluenza	772	9.2%
Human metapneumovirus	772	8.4%
Influenza	6728	4.5%
SARS-CoV-2	7119	3.2%
Seasonal coronaviruses	559	2.7%
Adenovirus	756	2.0%
RSV	5406	0.9%
<i>Bordetella pertussis</i>	528	0.2%

Number Tested and Positivity Rate for **Group A Streptococcus** by PCR at Wisconsin Laboratories



Additional Information

- Additional information on respiratory pathogens can be found on the DHS website: <https://www.dhs.wisconsin.gov/disease/respiratory.htm>
- The WSLH SARS-CoV-2 genomic dashboard is available here: <https://dataportal.slh.wisc.edu/sc2dashboard>
- The influenza, RSV and respiratory virus activity graphs can be viewed here: <http://www.slh.wisc.edu/wcln-surveillance/surveillance/virology-surveillance/>
- The bacterial, viral and parasitic activity graphs can be viewed here: <http://www.slh.wisc.edu/wcln-surveillance/surveillance/gastropathogen-surveillance/>

To subscribe to this report, email WCLN@slh.wisc.edu