

Laboratory Surveillance Report

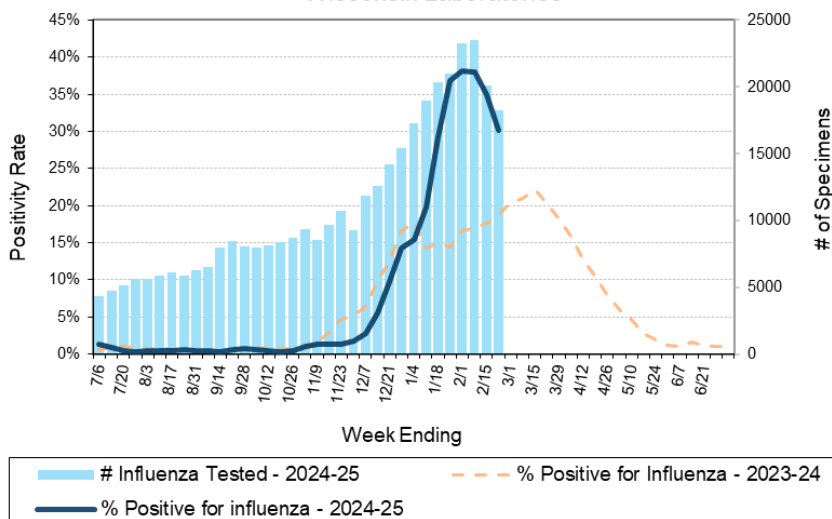
**** For a selection of pathogens, participating Wisconsin clinical laboratories voluntarily report to WSLH on a weekly basis the total number of tests performed, and the number of those tests with positive results.**

To Enhance Surveillance Activities, Please Send:

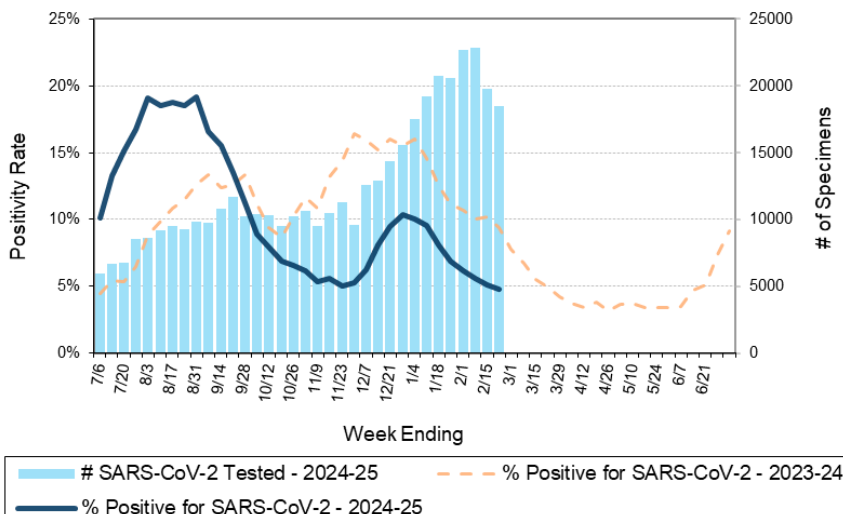
- **All Testing Sites:**
 - ◊ **Three influenza-related hospitalizations per week**
 - ◊ **ALL** Influenza A positive specimens:
 - **From patients admitted to the ICU**
 - **With swine, bovine or poultry exposure**
 - With international travel history
 - That fail to subtype as H1 or H3 (Ct <35)
 - ◊ **Up to 5 SARS-CoV-2 positive specimens per week**
 - ◊ **All Enterovirus positive CSF specimens**

NEW

Number Tested and Positivity Rate for **Influenza** by PCR at Wisconsin Laboratories



Number Tested and Positivity Rate for **SARS-CoV-2** by PCR at Wisconsin Laboratories



Respiratory Snapshot:

- Influenza activity is **high** in Wisconsin (30.2%) and nationally (24.5%)
 - **Influenza A** is the dominant strain circulating (94%)
 - Influenza **A(H1N1)pdm09** (50%) and **A(H3N2)** (50%) and are co-circulating this season
- Seasonal coronaviruses (9.1%) and RSV (7.9%) activities are **Moderate** in Wisconsin

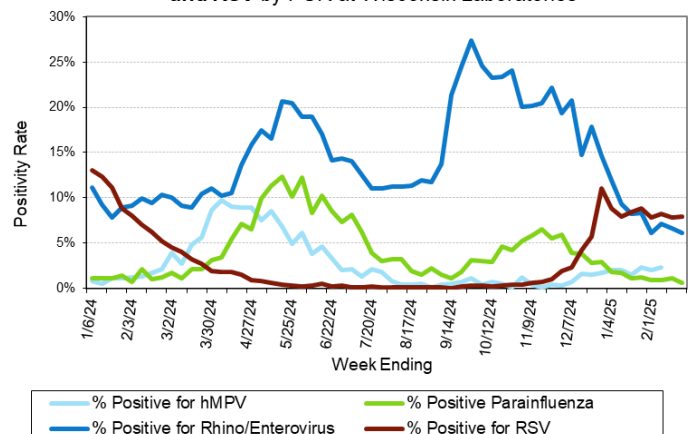
Enteric Snapshot:

- Norovirus activity is **high** (24.3%)

Other:

- Group A *Streptococcus* activity in Wisconsin is **high** (18.5%).

Positivity Rate of **hMPV, Parainfluenza, Rhino/Enterovirus and RSV** by PCR at Wisconsin Laboratories



Laboratory Surveillance Report

Enteric Pathogens

Week Ending 2/22/25

	# Tested	% Positive
Norovirus***	744	24.3%
<i>Campylobacter</i>	808	2.2%
Astrovirus	664	2.0%
<i>Salmonella</i>	808	1.4%
Sapovirus	664	1.2%
Rotavirus	695	1.0%
STEC	808	0.6%
<i>Shigella/EIEC</i>	808	0.4%
<i>Yersinia enterocolitica</i>	720	0.4%
<i>Giardia</i>	726	0.4%
Adenovirus 40/41	664	0.3%
<i>Cryptosporidium</i>	726	0.1%
<i>Aeromonas</i>	146	0.0%
<i>E. coli</i> 0157	317	0.0%
<i>Plesiomonas shigelloides</i>	687	0.0%
<i>Vibrio</i>	720	0.0%
<i>Cyclospora</i>	664	0.0%
<i>Entamoeba histolytica</i>	721	0.0%

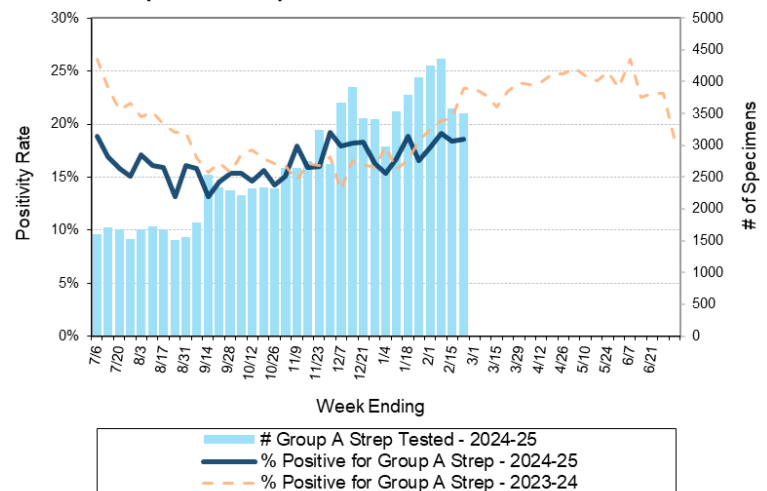
***BioMerieux has announced an increased risk of false positive norovirus results with the BioFire FilmArray GI panel, which may increase the statewide norovirus percent positivity **

Respiratory Pathogens

Week Ending 2/22/25

	# Tested	% Positive
Influenza	18225	30.2% ↓
Seasonal coronaviruses	1252	9.1%
RSV	15426	7.9%
Rhinovirus/Enterovirus	2332	6.1%
SARS-CoV-2	18461	4.7%
Human metapneumovirus	1429	2.7%
Adenovirus	1395	1.6%
<i>Bordetella pertussis</i>	1189	0.8%
Parainfluenza	1380	0.7%

Number Tested and Positivity Rate for **Group A Streptococcus** by PCR at Wisconsin Laboratories



Additional Information



- Additional Information on avian influenza testing and influenza surveillance at WSLH: <https://www.slh.wisc.edu/clinical/diseases/h5n1-highly-pathogenic-avian-influenza-update/>
- Additional information on respiratory pathogens can be found on the DHS website: <https://www.dhs.wisconsin.gov/disease/respiratory.htm>
- Activity graphs for a variety of respiratory pathogens can be found on the DHS Respiratory Illness Dashboard: <https://www.dhs.wisconsin.gov/disease/laboratory-based-data.htm>
- Activity graphs for a variety of gastrointestinal pathogens can be found on the WSLH website: <http://www.slh.wisc.edu/wcln-surveillance/surveillance/gastropathogen-surveillance/>

To subscribe to this report, email WCLN@slh.wisc.edu