

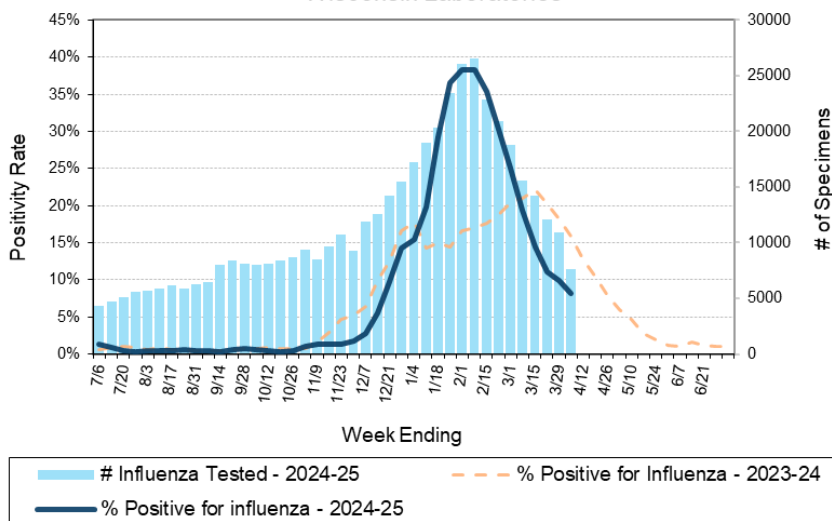
Laboratory Surveillance Report

**** For a selection of pathogens, participating Wisconsin clinical laboratories voluntarily report to WSLH on a weekly basis the total number of tests performed, and the number of those tests with positive results.**

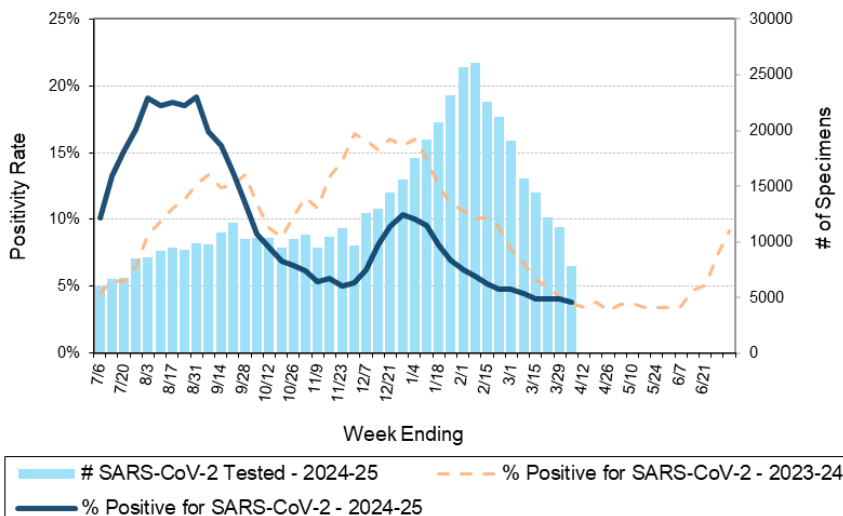
To Enhance Surveillance Activities, Please Send:

- **All Testing Sites:**
 - ◊ **Three influenza-related hospitalizations per week**
 - ◊ **ALL Influenza A positive specimens:**
 - **From patients admitted to the ICU**
 - **With swine, bovine or poultry exposure**
 - **With international travel history**
 - **That fail to subtype as H1 or H3 (Ct <35)**
 - ◊ **Up to 5 SARS-CoV-2 positive specimens per week**
 - ◊ **All Enterovirus positive CSF specimens**

Number Tested and Positivity Rate for **Influenza** by PCR at Wisconsin Laboratories



Number Tested and Positivity Rate for **SARS-CoV-2** by PCR at Wisconsin Laboratories



Respiratory Snapshot:

- Influenza activity is **decreasing** in Wisconsin (8.1%) and nationally (7.6%)
 - **Influenza B** is the dominant strain circulating (55.3%)
 - Influenza **A(H1N1)pdm09** (55%) and **A(H3N2)** (45%) and are co-circulating this season
- Rhinovirus/Enterovirus (14.5%), human metapneumovirus (11.3) and seasonal coronavirus activities are **increasing** in Wisconsin

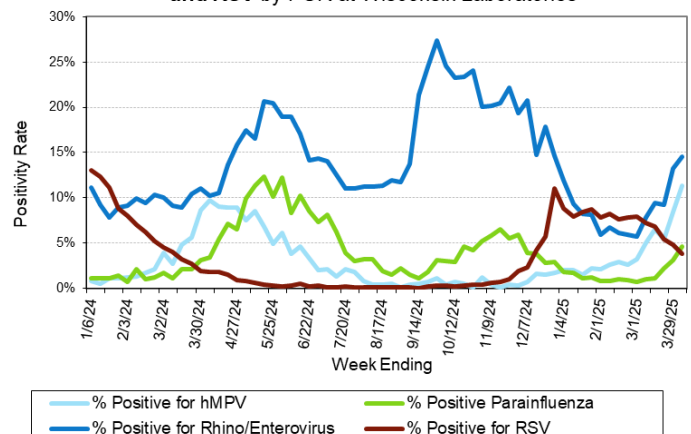
Enteric Snapshot:

- Norovirus activity is **decreasing** (14.3%)

Other:

- Group A *Streptococcus* activity in Wisconsin is **high** (22.4%).

Positivity Rate of **hMPV, Parainfluenza, Rhino/Enterovirus and RSV** by PCR at Wisconsin Laboratories



Laboratory Surveillance Report

Enteric Pathogens

Week Ending 4/5/25

	# Tested	% Positive
Norovirus***	378	14.3%
Astrovirus	352	6.8%
<i>Salmonella</i>	503	2.0%
Rotavirus	380	1.6%
<i>Campylobacter</i>	518	1.5%
Adenovirus 40/41	352	0.9%
Sapovirus	352	0.9%
<i>Yersinia enterocolitica</i>	415	0.7%
<i>Shigella/EIEC</i>	501	0.6%
<i>Cryptosporidium</i>	415	0.5%
<i>Giardia</i>	415	0.5%
STEC	503	0.4%
<i>Vibrio</i>	415	0.2%
<i>Aeromonas</i>	44	0.0%
<i>E. coli</i> O157	151	0.0%
<i>Plesiomonas shigelloides</i>	388	0.0%
<i>Cyclospora</i>	352	0.0%
<i>Entamoeba histolytica</i>	412	0.0%

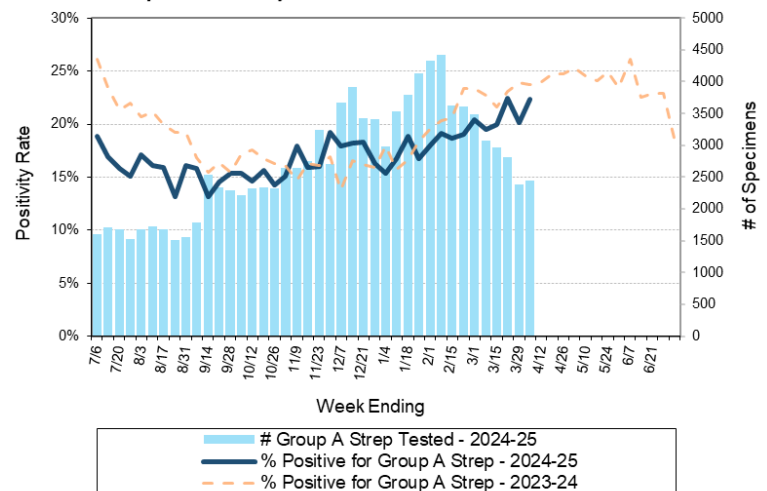
***BioMerieux has announced an increased risk of false positive norovirus results with the BioFire FilmArray GI panel, which may increase the statewide norovirus percent positivity **

Respiratory Pathogens

Week Ending 4/5/25

	# Tested	% Positive
Rhinovirus/Enterovirus	1141	14.5%
Human metapneumovirus	716	11.3%
Seasonal coronaviruses	616	9.4%
Influenza	7635	8.1%
Parainfluenza	716	4.6%
RSV	6656	3.8%
SARS-CoV-2	7786	3.8%
Adenovirus	713	2.5%
<i>Bordetella pertussis</i>	547	0.7%

Number Tested and Positivity Rate for Group A *Streptococcus* by PCR at Wisconsin Laboratories



Additional Information

- Additional Information on avian influenza testing and influenza surveillance at WSLH: <https://www.slh.wisc.edu/clinical/diseases/h5n1-highly-pathogenic-avian-influenza-update/>
- Additional information on respiratory pathogens can be found on the DHS website: <https://www.dhs.wisconsin.gov/disease/respiratory.htm>
- Activity graphs for a variety of respiratory pathogens can be found on the DHS Respiratory Illness Dashboard: <https://www.dhs.wisconsin.gov/disease/laboratory-based-data.htm>
- Activity graphs for a variety of gastrointestinal pathogens can be found on the WSLH website: <http://www.slh.wisc.edu/wcln-surveillance/surveillance/gastropathogen-surveillance/>

To subscribe to this report, email WCLN@slh.wisc.edu