

Laboratory Surveillance Report

**** For a selection of pathogens, participating Wisconsin clinical laboratories voluntarily report to WSLH on a weekly basis the total number of tests performed, and the number of those tests with positive results.**

To Enhance Surveillance Activities, Please Send:

- **All Testing Sites:**
 - ◊ **Three influenza-related hospitalizations per week**
 - ◊ **ALL** Influenza A positive specimens:
 - **From patients admitted to the ICU**
 - **With swine, bovine or poultry exposure**
 - **With international travel history**
 - **That fail to subtype as H1 or H3 (Ct <35)**
 - ◊ **Up to 5 SARS-CoV-2 positive specimens per week**
 - ◊ **All Enterovirus positive CSF specimens**

Respiratory Snapshot:

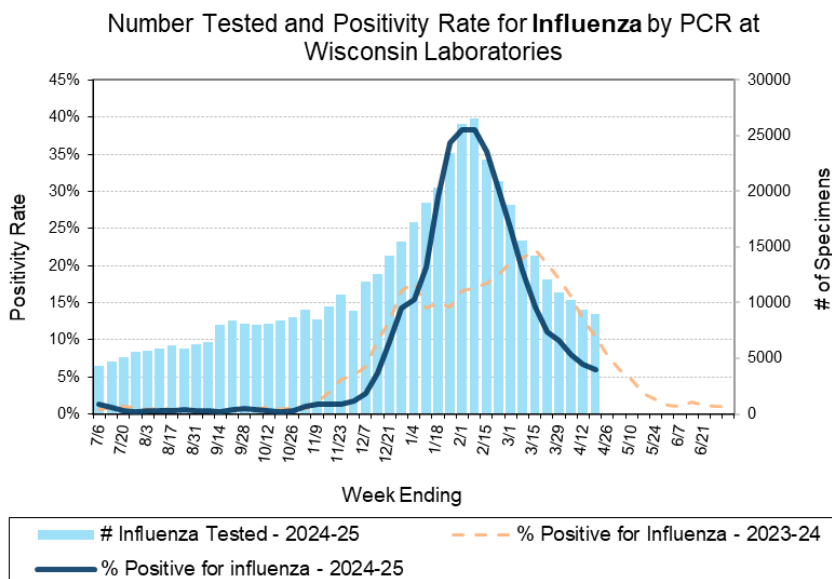
- Influenza activity is **decreasing** in Wisconsin (5.9%) and nationally (5.6%)
 - **Influenza B** is the dominant strain circulating (66.8%)
- Rhinovirus/Enterovirus (16.2%) activity is **increasing** in Wisconsin

Enteric Snapshot:

- Norovirus activity is **decreasing** (11.9%)

Other:

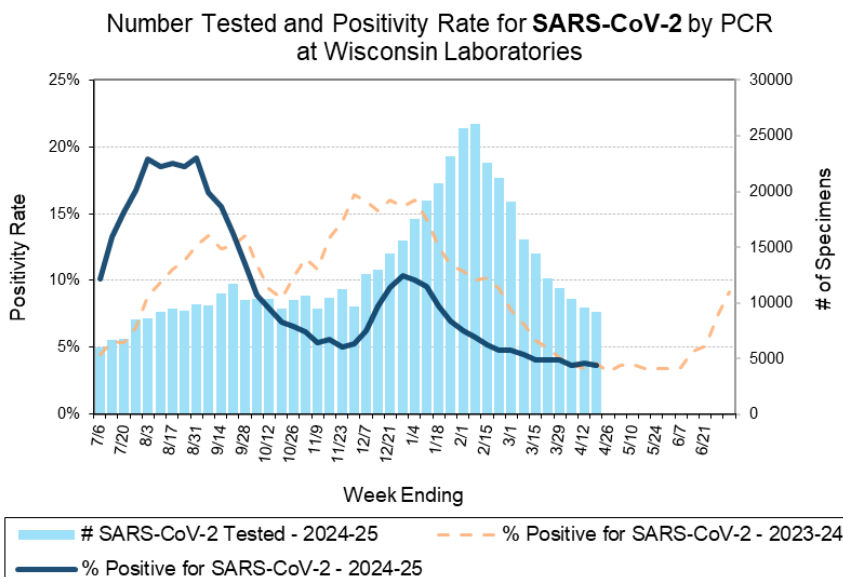
- Group A *Streptococcus* activity in Wisconsin is **high** (19.1%).



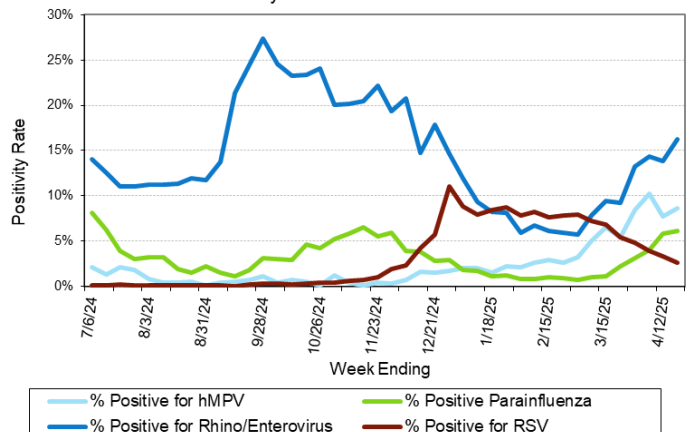
33rd Annual
Wisconsin Virology Conference
Wednesday, June 11, 2025

Registration Open!

CLICK HERE



Positivity Rate of hMPV, Parainfluenza, Rhino/Enterovirus and RSV by PCR at Wisconsin Laboratories



Next Page

Laboratory Surveillance Report

Enteric Pathogens

Week Ending 4/19/25

	# Tested	% Positive
Norovirus***	519	11.9%
Astrovirus	472	4.0%
<i>Campylobacter</i>	647	3.4%
Rotavirus	514	3.3%
Sapovirus	472	2.1%
<i>Salmonella</i>	626	1.3%
<i>Giardia</i>	556	1.1%
<i>Cryptosporidium</i>	538	0.9%
STEC	626	0.8%
Adenovirus 40/41	472	0.8%
<i>Yersinia enterocolitica</i>	548	0.7%
<i>Shigella/EIEC</i>	591	0.2%
<i>Aeromonas</i>	35	0.0%
<i>E. coli</i> 0157	163	0.0%
<i>Plesiomonas shigelloides</i>	500	0.0%
<i>Vibrio</i>	548	0.0%
<i>Cyclospora</i>	472	0.0%
<i>Entamoeba histolytica</i>	531	0.0%

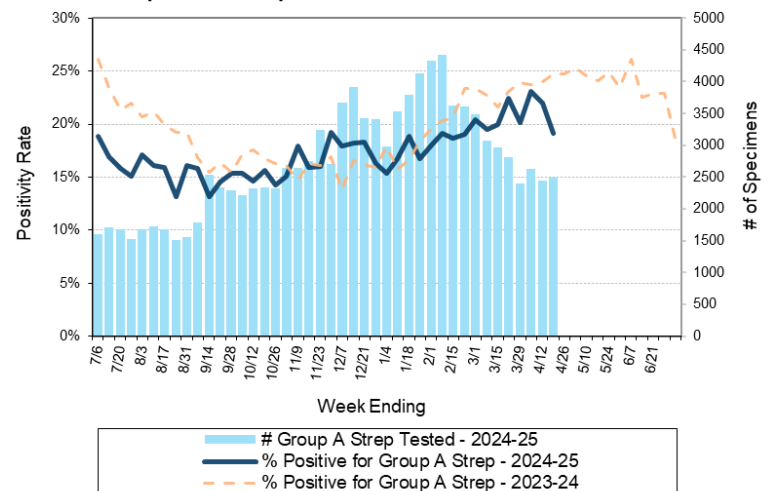
***BioMerieux has announced an increased risk of false positive norovirus results with the BioFire FilmArray GI panel, which may increase the statewide norovirus percent positivity **

Respiratory Pathogens

Week Ending 4/19/25

	# Tested	% Positive
Rhinovirus/Enterovirus	1605	16.2% ↑
Human metapneumovirus	1234	8.6%
Parainfluenza	1201	6.2%
Influenza	8965	5.9% ↓
Seasonal coronaviruses	1094	3.7%
SARS-CoV-2	9148	3.7%
RSV	7755	2.6%
Adenovirus	1235	1.9%
<i>Bordetella pertussis</i>	860	0.5%

Number Tested and Positivity Rate for **Group A Streptococcus** by PCR at Wisconsin Laboratories



Additional Information

- Additional Information on avian influenza testing and influenza surveillance at WSLH: <https://www.slh.wisc.edu/clinical/diseases/h5n1-highly-pathogenic-avian-influenza-update/>
- Additional information on respiratory pathogens can be found on the DHS website: <https://www.dhs.wisconsin.gov/disease/respiratory.htm>
- Activity graphs for a variety of respiratory pathogens can be found on the DHS Respiratory Illness Dashboard: <https://www.dhs.wisconsin.gov/disease/laboratory-based-data.htm>
- Activity graphs for a variety of gastrointestinal pathogens can be found on the WSLH website: <http://www.slh.wisc.edu/wcln-surveillance/surveillance/gastropathogen-surveillance/>

To subscribe to this report, email WCLN@slh.wisc.edu