

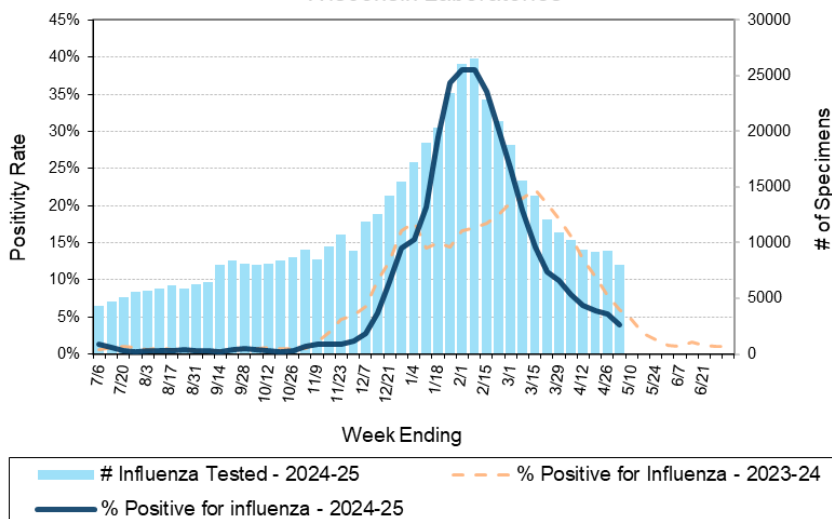
Laboratory Surveillance Report

**** For a selection of pathogens, participating Wisconsin clinical laboratories voluntarily report to WSLH on a weekly basis the total number of tests performed, and the number of those tests with positive results.**

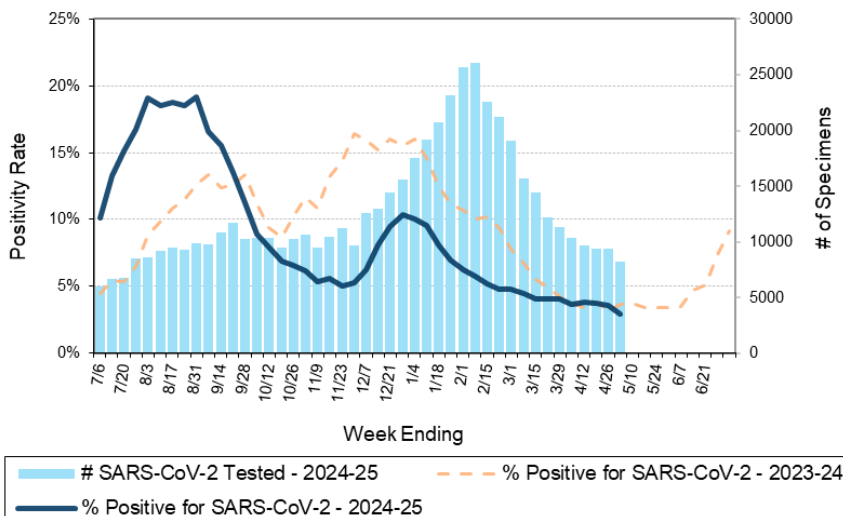
To Enhance Surveillance Activities, Please Send:

- **All Testing Sites:**
 - ◊ **Three influenza-related hospitalizations per week**
 - ◊ **ALL Influenza A positive specimens:**
 - **From patients admitted to the ICU**
 - **With swine, bovine or poultry exposure**
 - **With international travel history**
 - **That fail to subtype as H1 or H3 (Ct <35)**
 - ◊ **Up to 5 SARS-CoV-2 positive specimens per week**
 - ◊ **All Enterovirus positive CSF specimens**

Number Tested and Positivity Rate for **Influenza** by PCR at Wisconsin Laboratories



Number Tested and Positivity Rate for **SARS-CoV-2** by PCR at Wisconsin Laboratories



Respiratory Snapshot:

- Influenza activity is **decreasing** in Wisconsin (3.9%) and nationally (3.6%)
 - **Influenza B** is the dominant strain circulating (72.3%)
- Rhinovirus/Enterovirus (19.4%) and parainfluenza (9.6%) activities are **increasing** in Wisconsin

Enteric Snapshot:

- Norovirus activity is **decreasing** (6.7%)

Other:

- Group A *Streptococcus* activity in



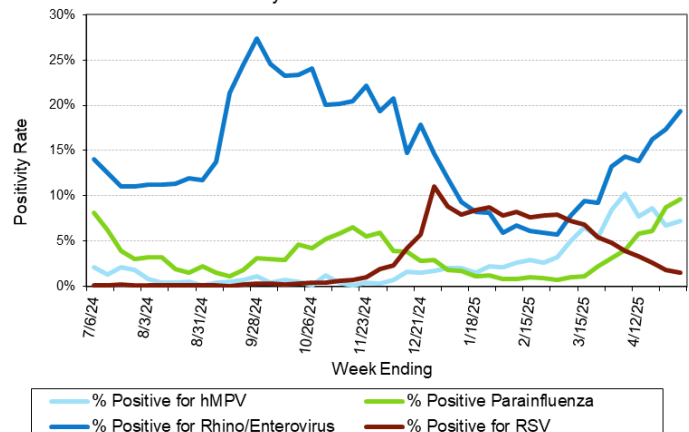
Wisconsin Virology Conference

Wednesday, June 11, 2025

Registration Open!

CLICK HERE

Positivity Rate of **hMPV, Parainfluenza, Rhino/Enterovirus and RSV** by PCR at Wisconsin Laboratories



Next Page 

Laboratory Surveillance Report

Enteric Pathogens

Week Ending 5/3/25

	# Tested	% Positive
Norovirus***	643	6.7%
Astrovirus	597	5.7%
Rotavirus	645	5.3%
<i>Salmonella</i>	755	1.9%
<i>Campylobacter</i>	736	1.4%
Sapovirus	609	1.0%
STEC	755	0.7%
<i>Shigella/EIEC</i>	755	0.5%
<i>Cryptosporidium</i>	671	0.4%
<i>Yersinia enterocolitica</i>	657	0.3%
<i>Giardia</i>	659	0.3%
<i>Plesiomonas shigelloides</i>	625	0.2%
<i>Vibrio</i>	657	0.2%
Adenovirus 40/41	597	0.2%
<i>Entamoeba histolytica</i>	656	0.2%
Aeromonas	60	0.0%
<i>E. coli</i> 0157	244	0.0%
<i>Cyclospora</i>	597	0.0%

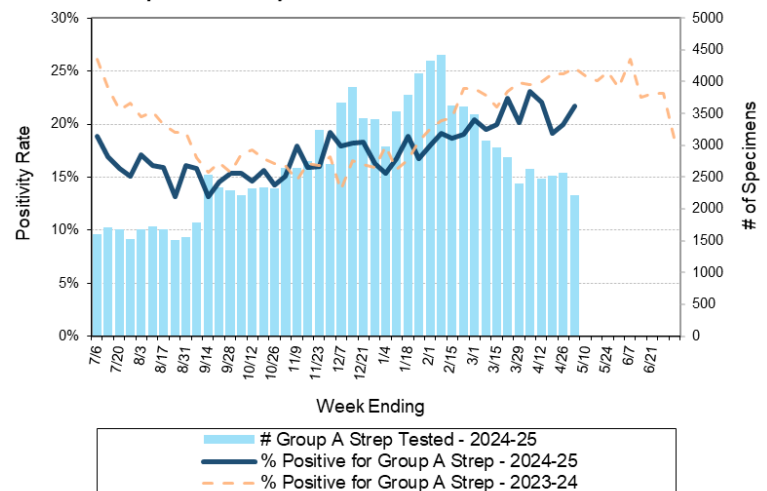
***BioMerieux has announced an increased risk of false positive norovirus results with the BioFire FilmArray GI panel, which may increase the statewide norovirus percent positivity **

Respiratory Pathogens

Week Ending 5/3/25

	# Tested	% Positive
Rhinovirus/Enterovirus	1514	19.4%
Parainfluenza	1171	9.6%
Human metapneumovirus	1205	7.2%
Influenza	7986	3.9%
SARS-CoV-2	8234	2.9%
Adenovirus	1197	2.7%
Seasonal coronaviruses	1043	2.3%
RSV	7136	1.6%
<i>Bordetella pertussis</i>	839	0.5%

Number Tested and Positivity Rate for Group A *Streptococcus* by PCR at Wisconsin Laboratories



Additional Information

- Additional Information on avian influenza testing and influenza surveillance at WSLH: <https://www.slh.wisc.edu/clinical/diseases/h5n1-highly-pathogenic-avian-influenza-update/>
- Additional information on respiratory pathogens can be found on the DHS website: <https://www.dhs.wisconsin.gov/disease/respiratory.htm>
- Activity graphs for a variety of respiratory pathogens can be found on the DHS Respiratory Illness Dashboard: <https://www.dhs.wisconsin.gov/disease/laboratory-based-data.htm>
- Activity graphs for a variety of gastrointestinal pathogens can be found on the WSLH website: <http://www.slh.wisc.edu/wcln-surveillance/surveillance/gastropathogen-surveillance/>

To subscribe to this report, email WCLN@slh.wisc.edu