

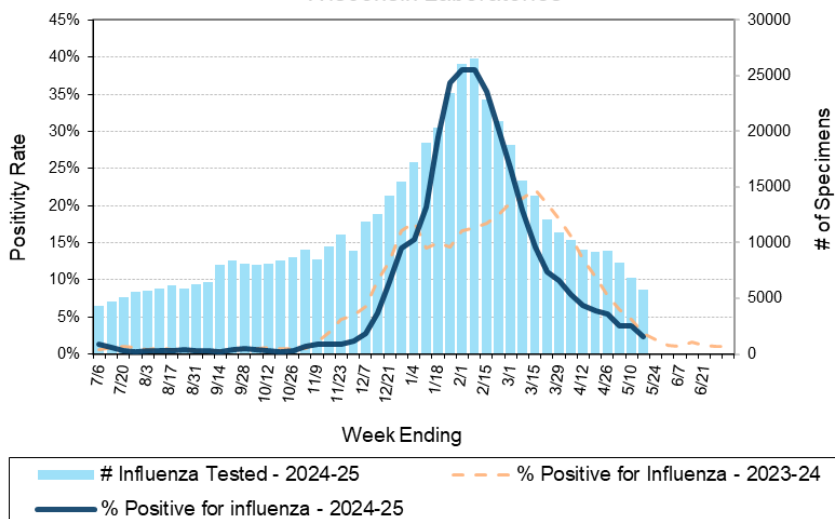
# Laboratory Surveillance Report

**\*\* For a selection of pathogens, participating Wisconsin clinical laboratories voluntarily report to WSLH on a weekly basis the total number of tests performed, and the number of those tests with positive results.**

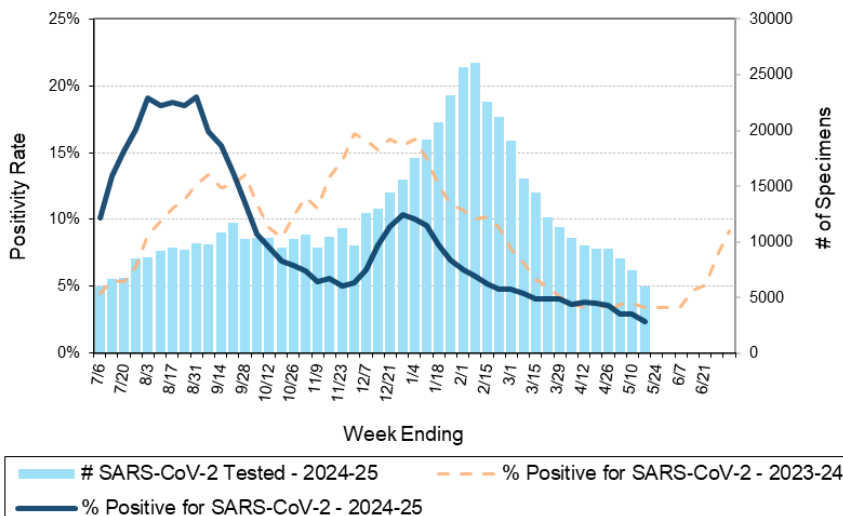
## To Enhance Surveillance Activities, Please Send:

- **All Testing Sites:**
  - ◊ **Three influenza-related hospitalizations per week**
  - ◊ **ALL Influenza A positive specimens:**
    - **From patients admitted to the ICU**
    - **With swine, bovine or poultry exposure**
    - **With international travel history**
    - **That fail to subtype as H1 or H3 (Ct <35)**
  - ◊ **Up to 5 SARS-CoV-2 positive specimens per week**
  - ◊ **All Enterovirus positive CSF specimens**

Number Tested and Positivity Rate for **Influenza** by PCR at Wisconsin Laboratories



Number Tested and Positivity Rate for **SARS-CoV-2** by PCR at Wisconsin Laboratories



## Respiratory Snapshot:

- Influenza activity is **decreasing** in Wisconsin (2.4%) and nationally (3.6%)
  - **Influenza B** is the dominant strain circulating (72.3%)
- Rhinovirus/Enterovirus (11.4%) and parainfluenza (11.1%) activities are **high** in Wisconsin

## Enteric Snapshot:

- Norovirus activity is **decreasing** (6.0%)

## Other:

- Group A *Streptococcus* activity in Wisconsin is **high** (17.9%).

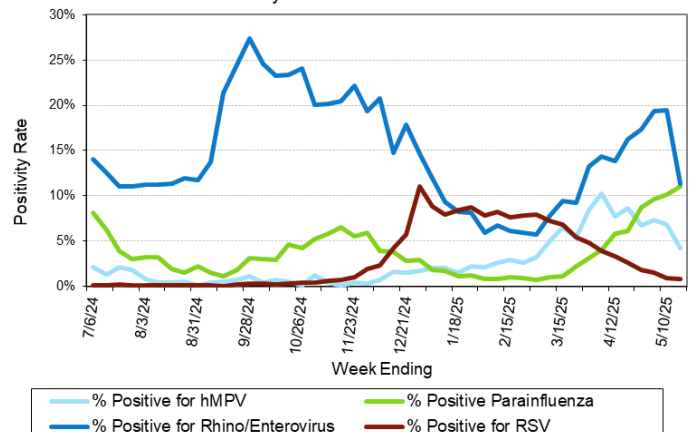


**Wisconsin Virology Conference**  
Wednesday, June 11, 2025

Registration Open!

**CLICK HERE**

Positivity Rate of **hMPV, Parainfluenza, Rhino/Enterovirus and RSV** by PCR at Wisconsin Laboratories



**Next Page** 

# Laboratory Surveillance Report

## Enteric Pathogens

Week Ending 5/17/25

	# Tested	% Positive
Norovirus***	483	6.0%
Rotavirus	479	4.0%
Astrovirus	432	3.9%
<i>Salmonella</i>	558	2.7%
<i>Campylobacter</i>	563	2.1%
STEC	558	0.9%
Sapovirus	432	0.9%
<i>Shigella/EIEC</i>	558	0.7%
<i>Cryptosporidium</i>	535	0.7%
<i>Yersinia enterocolitica</i>	520	0.6%
Adenovirus 40/41	432	0.5%
<i>Vibrio</i>	501	0.2%
<i>Cyclospora</i>	451	0.2%
<i>Entamoeba histolytica</i>	512	0.2%
<i>Giardia</i>	535	0.2%
<i>Aeromonas</i>	43	0.0%
<i>E. coli</i> 0157	144	0.0%
<i>Plesiomonas shigelloides</i>	475	0.0%

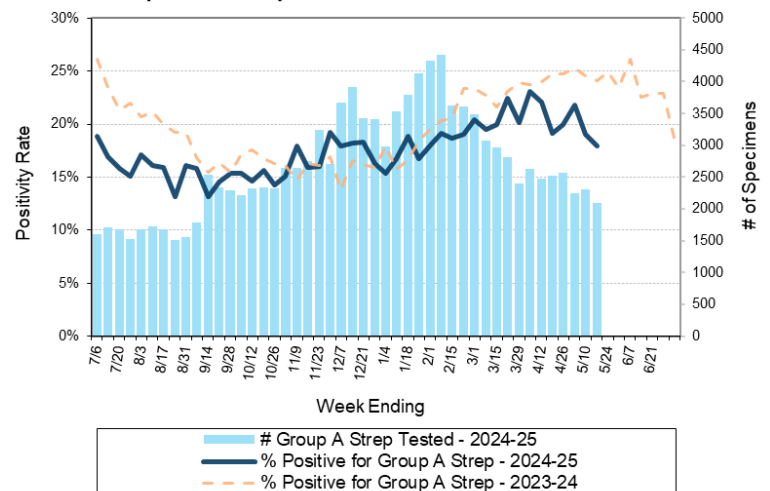
\*\*\*BioMerieux has announced an increased risk of false positive norovirus results with the BioFire FilmArray GI panel, which may increase the statewide norovirus percent positivity \*\*

## Respiratory Pathogens

Week Ending 5/17/25

	# Tested	% Positive
Rhinovirus/Enterovirus	1732	11.4%
Parainfluenza	930	11.1%
Human metapneumovirus	952	4.2%
Influenza	5774	2.4%
SARS-CoV-2	6004	2.4%
Seasonal coronaviruses	860	2.1%
Adenovirus	954	1.5%
RSV	4661	0.8%
<i>Bordetella pertussis</i>	618	0.0%

Number Tested and Positivity Rate for **Group A Streptococcus** by PCR at Wisconsin Laboratories



## Additional Information

- Additional Information on avian influenza testing and influenza surveillance at WSLH: <https://www.slh.wisc.edu/clinical/diseases/h5n1-highly-pathogenic-avian-influenza-update/>
- Additional information on respiratory pathogens can be found on the DHS website: <https://www.dhs.wisconsin.gov/disease/respiratory.htm>
- Activity graphs for a variety of respiratory pathogens can be found on the DHS Respiratory Illness Dashboard: <https://www.dhs.wisconsin.gov/disease/laboratory-based-data.htm>
- Activity graphs for a variety of gastrointestinal pathogens can be found on the WSLH website: <http://www.slh.wisc.edu/wcln-surveillance/surveillance/gastropathogen-surveillance/>

To subscribe to this report, email [WCLN@slh.wisc.edu](mailto:WCLN@slh.wisc.edu)