

Laboratory Surveillance Report

**** For a selection of pathogens, participating Wisconsin clinical laboratories voluntarily report to WSLH on a weekly basis the total number of tests performed, and the number of those tests with positive results.**

To Enhance Surveillance Activities, Please Send:

• All Testing Sites:

◇ ALL Influenza positive specimens:

• Especially, Influenza A specimens:

- From patients admitted to the ICU
- With swine, bovine or poultry exposure
- With international travel history
- That fail to subtype as H1 or H3 (Ct <35)

◇ Up to 5 SARS-CoV-2 positive specimens per week

◇ All Enterovirus positive CSF specimens

NEW

Respiratory Snapshot:

- Influenza activity is **low** in Wisconsin (1.4%) and nationally (1.2%)

- **Influenza B** is the dominant strain circulating (66%)

- Rhinovirus/Enterovirus (18.4%) and parainfluenza (9.8%) activities are **high** in Wisconsin

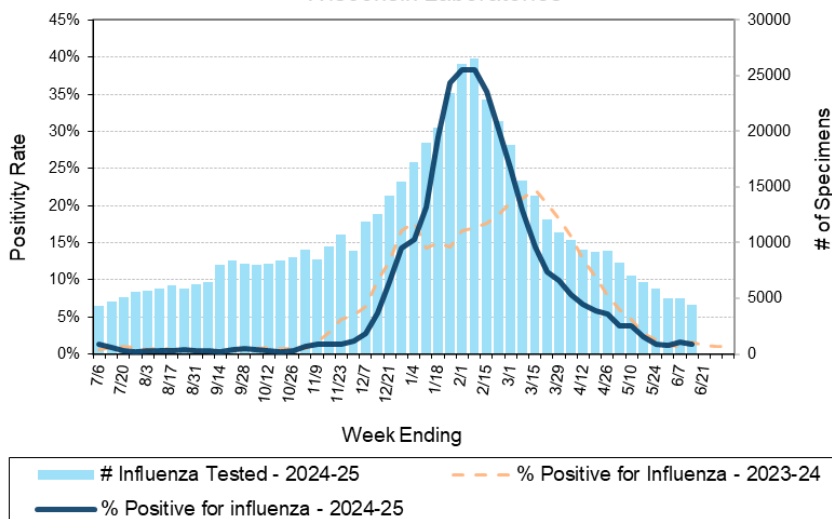
Enteric Snapshot:

- Norovirus (6.3%), rotavirus (3.6%) and Campylobacter (3.3%) activities are **moderate** in Wisconsin

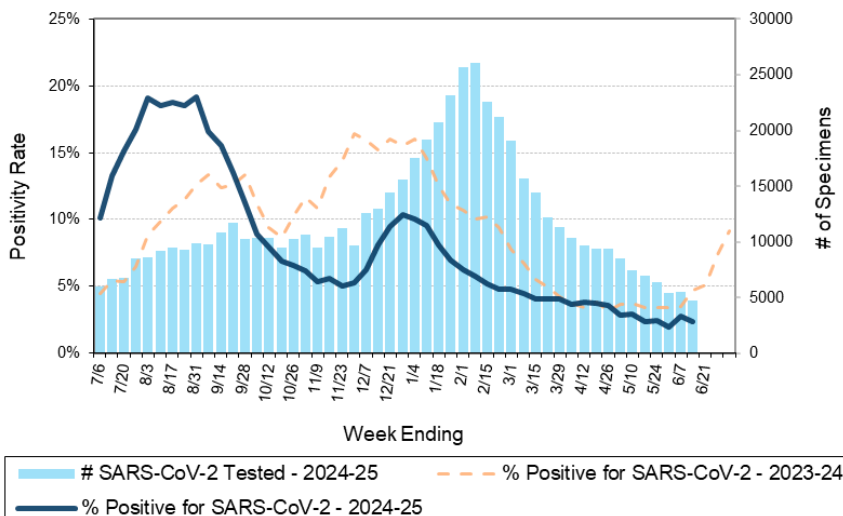
Other:

- Group A *Streptococcus* activity in Wisconsin is **high** (19.6%).

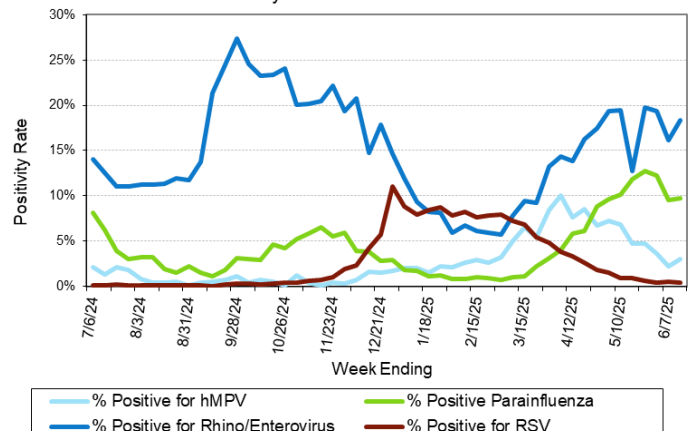
Number Tested and Positivity Rate for **Influenza** by PCR at Wisconsin Laboratories



Number Tested and Positivity Rate for **SARS-CoV-2** by PCR at Wisconsin Laboratories



Positivity Rate of **hMPV, Parainfluenza, Rhino/Enterovirus and RSV** by PCR at Wisconsin Laboratories



Laboratory Surveillance Report

Enteric Pathogens

Week Ending 6/14/25

	# Tested	% Positive
Norovirus***	604	6.3%
Rotavirus	635	3.6%
<i>Campylobacter</i>	757	3.3%
Astrovirus	586	2.4%
<i>Salmonella</i>	757	1.8%
STEC	757	1.7%
<i>Cryptosporidium</i>	649	1.1%
<i>Yersinia enterocolitica</i>	654	0.8%
<i>Giardia</i>	649	0.8%
<i>E. coli</i> O157	279	0.7%
Sapovirus	586	0.7%
Adenovirus 40/41	586	0.5%
<i>Shigella</i> /EIEC	757	0.3%
<i>Cyclospora</i>	586	0.3%
<i>Plesiomonas shigelloides</i>	616	0.2%
<i>Vibrio</i>	654	0.2%
<i>Aeromonas</i>	60	0.0%
<i>Entamoeba histolytica</i>	647	0.0%

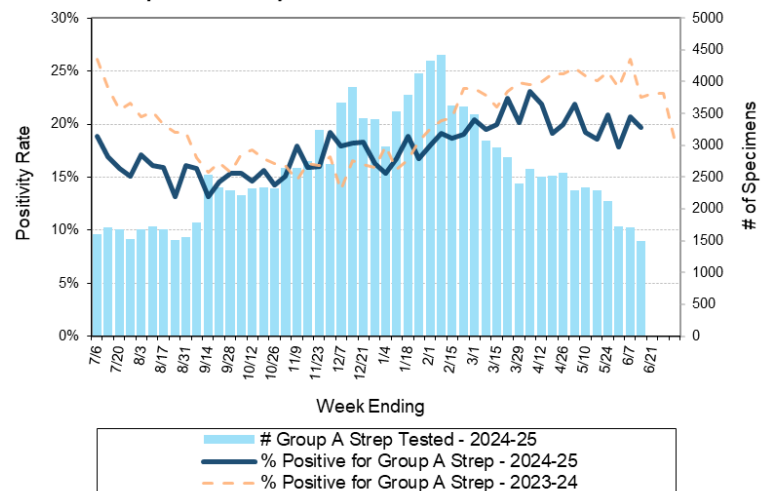
***BioMerieux has announced an increased risk of false positive norovirus results with the BioFire FilmArray GI panel, which may increase the statewide norovirus percent positivity **

Respiratory Pathogens

Week Ending 6/14/25

	# Tested	% Positive
Rhinovirus/Enterovirus	1290	18.4%
Parainfluenza	1015	9.8%
Human metapneumovirus	1062	3.0%
SARS-CoV-2	4764	2.3%
Adenovirus	1046	2.2%
Influenza	4417	1.4%
Seasonal coronaviruses	832	1.4%
<i>Bordetella pertussis</i>	715	0.8%
RSV	4063	0.4%

Number Tested and Positivity Rate for **Group A Streptococcus** by PCR at Wisconsin Laboratories



Additional Information

- Additional Information on avian influenza testing and influenza surveillance at WSLH:
<https://www.slh.wisc.edu/clinical/diseases/h5n1-highly-pathogenic-avian-influenza-update/>
- Additional information on respiratory pathogens can be found on the DHS website:
<https://www.dhs.wisconsin.gov/disease/respiratory.htm>
- Activity graphs for a variety of respiratory pathogens can be found on the DHS Respiratory Illness Dashboard:
<https://www.dhs.wisconsin.gov/disease/laboratory-based-data.htm>
- Activity graphs for a variety of gastrointestinal pathogens can be found on the WSLH website:
<http://www.slh.wisc.edu/wcln-surveillance/surveillance/gastropathogen-surveillance/>

To subscribe to this report, email WCLN@slh.wisc.edu