

Laboratory Surveillance Report

**** For a selection of pathogens, participating Wisconsin clinical laboratories voluntarily report to WSLH on a weekly basis the total number of tests performed, and the number of those tests with positive results.**

To Enhance Surveillance Activities, Please Send:

• All Testing Sites:

◇ ALL Influenza positive specimens:

• Especially, Influenza A specimens:

- From patients admitted to the ICU
- With swine, bovine or poultry exposure
- With international travel history
- That fail to subtype as H1 or H3 (Ct <35)

◇ Up to 5 SARS-CoV-2 positive specimens per week

◇ All Enterovirus positive CSF specimens

NEW

Respiratory Snapshot:

- Influenza activity is **low** in Wisconsin (0.6%) and nationally (1.2%)
- Rhinovirus/Enterovirus (16.4%) activity is **high** in Wisconsin

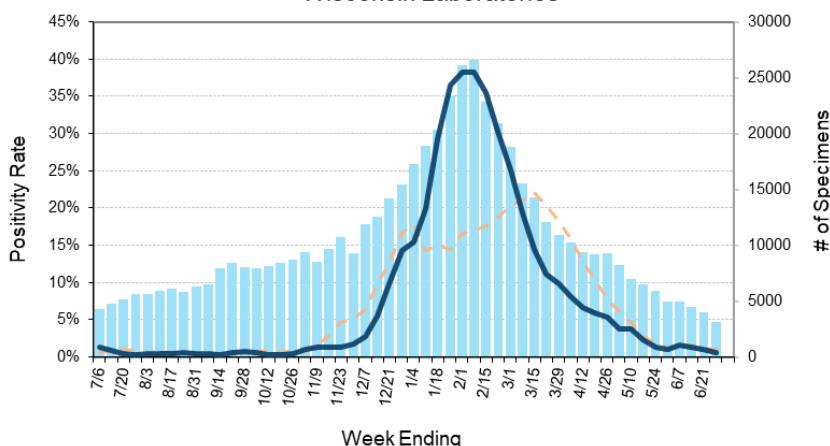
Enteric Snapshot:

- Norovirus (8.1%), Campylobacter (4.3%) and Salmonella (2.9%) activities are **elevated** in Wisconsin

Other:

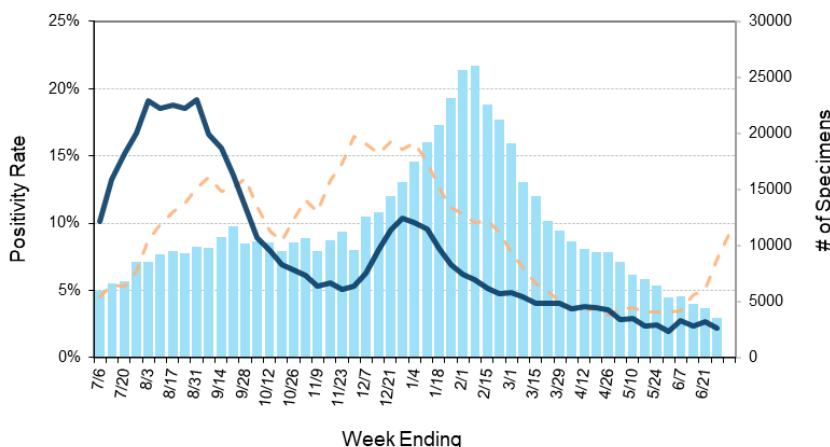
- Group A *Streptococcus* activity in Wisconsin is **high** (19.3%).

Number Tested and Positivity Rate for **Influenza** by PCR at Wisconsin Laboratories



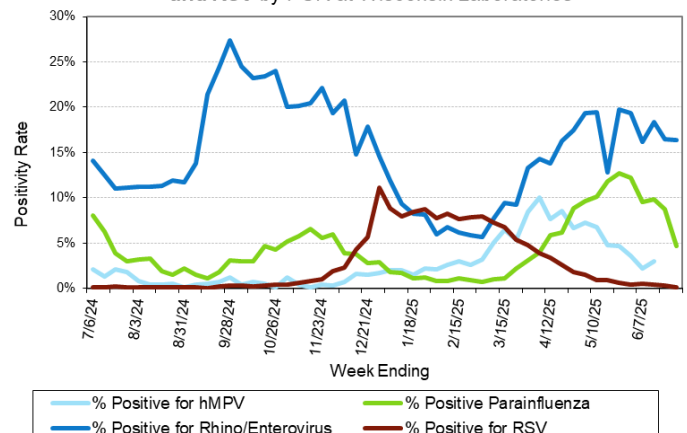
— # Influenza Tested - 2024-25 - - - % Positive for Influenza - 2023-24
— % Positive for influenza - 2024-25

Number Tested and Positivity Rate for **SARS-CoV-2** by PCR at Wisconsin Laboratories



— # SARS-CoV-2 Tested - 2024-25 - - - % Positive for SARS-CoV-2 - 2023-24
— % Positive for SARS-CoV-2 - 2024-25

Positivity Rate of **hMPV, Parainfluenza, Rhino/Enterovirus and RSV** by PCR at Wisconsin Laboratories



Laboratory Surveillance Report

Enteric Pathogens

Week Ending 6/28/25

	# Tested	% Positive
Norovirus***	454	8.1%
<i>Campylobacter</i>	599	4.3%
<i>Salmonella</i>	613	2.9%
Rotavirus	475	2.5%
STEC	599	1.5%
Sapovirus	455	1.1%
<i>Yersinia enterocolitica</i>	506	1.0%
<i>Cyclospora</i>	455	0.9%
<i>Cryptosporidium</i>	506	0.8%
<i>E. coli</i> O157	286	0.7%
<i>Giardia</i>	506	0.6%
<i>Plesiomonas shigelloides</i>	455	0.4%
Adenovirus 40/41	455	0.4%
Astrovirus	455	0.4%
<i>Shigella</i> /EIEC	599	0.3%
<i>Aeromonas</i>	44	0.0%
<i>Vibrio</i>	506	0.0%
<i>Entamoeba histolytica</i>	506	0.0%

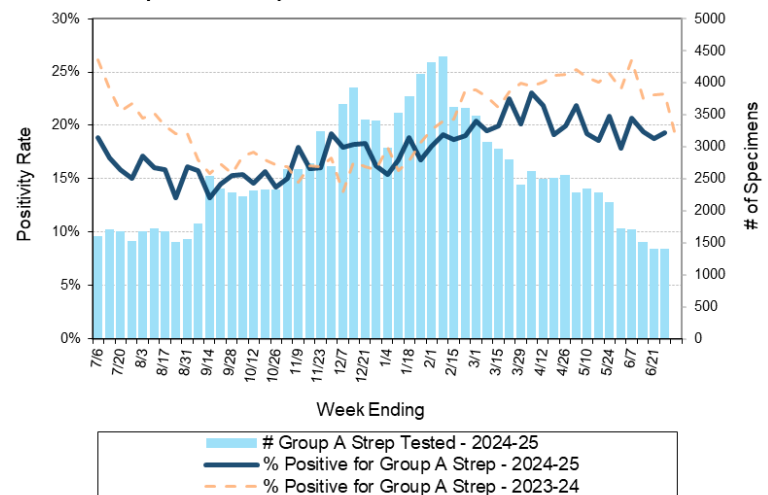
***BioMerieux has announced an increased risk of false positive norovirus results with the BioFire FilmArray GI panel, which may increase the statewide norovirus percent positivity **

Respiratory Pathogens

Week Ending 6/28/25

	# Tested	% Positive
Rhinovirus/Enterovirus	854	16.4%
Parainfluenza	668	4.6%
Human metapneumovirus	597	3.7%
Adenovirus	609	2.5%
SARS-CoV-2	3572	2.2%
<i>Bordetella pertussis</i>	437	1.6%
Influenza	3179	0.6%
Seasonal coronaviruses	586	0.3%
RSV	2992	0.1%

Number Tested and Positivity Rate for **Group A Streptococcus** by PCR at Wisconsin Laboratories



Additional Information

- Additional Information on avian influenza testing and influenza surveillance at WSLH: <https://www.slh.wisc.edu/clinical/diseases/h5n1-highly-pathogenic-avian-influenza-update/>
- Additional information on respiratory pathogens can be found on the DHS website: <https://www.dhs.wisconsin.gov/disease/respiratory.htm>
- Activity graphs for a variety of respiratory pathogens can be found on the DHS Respiratory Illness Dashboard: <https://www.dhs.wisconsin.gov/disease/laboratory-based-data.htm>
- Activity graphs for a variety of gastrointestinal pathogens can be found on the WSLH website: <http://www.slh.wisc.edu/wcln-surveillance/surveillance/gastropathogen-surveillance/>

To subscribe to this report, email WCLN@slh.wisc.edu